

Nightwish - White Night Fantasy

♩ = 120,000000

Percussion

7-string Electric Guitar

Kora

5-string Electric Bass

Synth Strings

Lead 6 (Voice)

Solo

5

Syn. Str.

Lead 6

11

Syn. Str.

Lead 6

17

Perc.

E. Gtr.

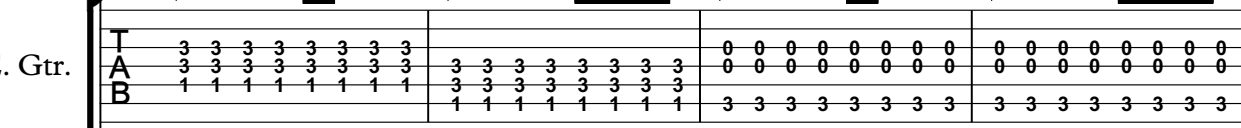
E. Bass

Syn. Str.

Solo

21 3

Perc. 

E. Gtr. 

E. Bass 

Syn. Str. 

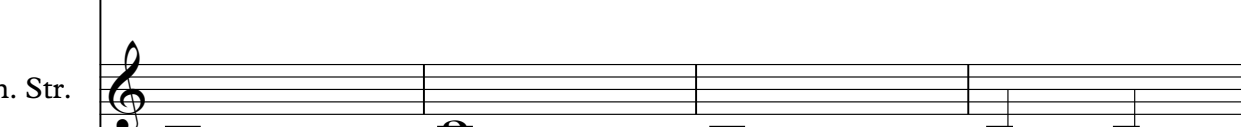
Lead 6 

Solo 

25

Perc. 

E. Bass 

Syn. Str. 

Lead 6 

29

Perc.

E. Bass

Syn. Str.

Lead 6

32

Perc.

E. Bass

Syn. Str.

Lead 6

36

Perc.

E. Bass

Syn. Str.

Lead 6

39


Perc.

E. Bass

Syn. Str.


Lead 6

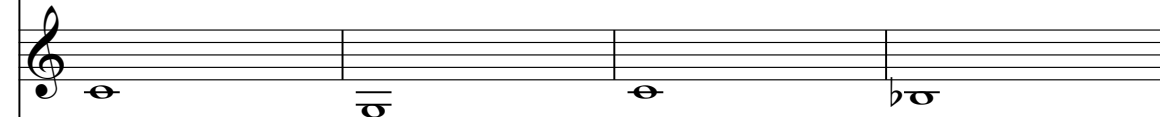
42


Perc. 

E. Gtr.

T	0 0 0 0 0 0 0 0	0 0 0 0 0 0 0 0	0 0 0 0 0 0 0 0	0 0 0 0 0 0 0 0
A				
B	3 3 3 3 3 3 3 3	3 3 3 3 3 3 3 3	3 3 3 3 3 3 3 3	3 3 3 3 3 3 3 3

E. Bass 

Syn. Str. 

Lead 6 

46

Perc. 

E. Gtr.

T			0 0 0 0 0 0 0 0
A			
B	6 6 6 6 6 6 6 6	3 3 3 3 3 3 3 3	3 3 3 3 3 3 3 3
	6 6 6 6 6 6 6 6	1 1 1 1 1 1 1 1	

E. Bass 

Syn. Str. 

Lead 6 

49

Perc.

E. Gtr.

E. Bass

Syn. Str.

Lead 6

52

Perc.

E. Bass

Syn. Str.

Lead 6

8

55

Perc.

E. Bass

Syn. Str.

Lead 6

58

Perc.

E. Gtr.

E. Bass

Syn. Str.

Lead 6

62

Perc.

E. Gtr.
T
A
B
6 6 6 6 6 6 6 6 3 3 3 3 3 3 3 3 0 0 0 0 0 0 0 0
6 6 6 6 6 6 6 6 1 1 1 1 1 1 1 1 3 3 3 3 3 3 3 3

E. Bass

Syn. Str.

Lead 6

65

Perc.

E. Gtr.
T
A
B
0 0 0 0 0 0 0 0 3 3 3 3 3 3 3 3

Kora

E. Bass

Syn. Str.

Lead 6

68

Perc. 

Kora 

E. Bass 

Syn. Str. 

71

Perc. 

Kora 

E. Bass 

Syn. Str. 

74

Perc. 

Kora 

E. Bass 

Syn. Str. 

78

Perc.

Kora

E. Bass

Syn. Str.

81

Perc.

E. Gtr.

T																			
A																			
B																			

Kora

E. Bass

Syn. Str.

Lead 6

Solo

85

Perc.

E. Gtr.

E. Bass

Syn. Str.

Lead 6

Solo

88

Perc.

E. Gtr.

E. Bass

Syn. Str.

Lead 6

Solo

91

Perc.

E. Gtr.

E. Bass

Syn. Str.

Lead 6

Solo

13

94

Perc.

E. Gtr.

E. Bass

Syn. Str.

Lead 6

Solo

97 

Perc. 

E. Gtr. 

E. Bass 

Syn. Str. 

Lead 6 

Solo 

101

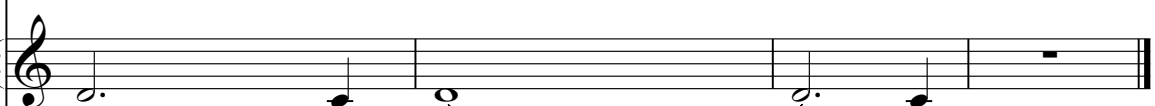
Syn. Str. 

Lead 6 

Solo 

104

Syn. Str. 

Lead 6 

Solo 

Nightwish - White Night Fantasy

Percussion

♩ = 120,000000

16

20

25

29

33

37

41

45

49

53

V.S.

Percussion

Musical score for Percussion, measures 57-96. The score is written on a grand staff with a treble clef and a 2/4 time signature. It features a mix of rhythmic patterns, including eighth and sixteenth notes, and rests. Measure 57 starts with a double bar line and a measure rest, followed by a series of eighth notes. Measures 61-65 show a variety of rhythmic patterns, including eighth notes and rests. Measures 70-75 feature a steady eighth-note pattern. Measures 80-85 show a mix of eighth and sixteenth notes. Measures 89-93 continue with eighth-note patterns. Measure 96 ends with a double bar line and a measure rest, followed by a thick black bar indicating the end of the page.

Nightwish - White Night Fantasy

7-string Electric Guitar

♩ = 120,000000
16

E			1 1 1 1 1 1 1 1	
B			0 0 0 0 0 0 0 0	
G		0 0 0 0 0 0 0 0		0 0 0 0 0 0 0 0
D		0 0 0 0 0 0 0 0		0 0 0 0 0 0 0 0
A		3 3 3 3 3 3 3 3		3 3 3 3 3 3 3 3
B				
E				
A				

20

T		3 3 3 3 3 3 3 3		0 0 0 0 0 0 0 0
A		3 3 3 3 3 3 3 3	3 3 3 3 3 3 3 3	0 0 0 0 0 0 0 0
B	6 6 6 6 3 3 3 3	1 1 1 1 1 1 1 1	3 3 3 3 3 3 3 3	3 3 3 3 3 3 3 3
	6 6 6 6 3 3 3 3		1 1 1 1 1 1 1 1	
	6 6 6 6 3 3 3 3			

24

17

T	0 0 0 0 0 0 0 0		0 0 0 0 0 0 0 0	0 0 0 0 0 0 0 0
A	0 0 0 0 0 0 0 0			0 0 0 0 0 0 0 0
B	3 3 3 3 3 3 3 3		3 3 3 3 3 3 3 3	3 3 3 3 3 3 3 3

44

T	0 0 0 0 0 0 0 0	0 0 0 0 0 0 0 0		
A		3 3 3 3 3 3 3 3		
B	3 3 3 3 3 3 3 3		6 6 6 6 6 6 6 6	3 3 3 3 3 3 3 3
			6 6 6 6 6 6 6 6	1 1 1 1 1 1 1 1

48

8

T				0 0 0 0 0 0 0 0
A	0 0 0 0 0 0 0 0	0 0 0 0 0 0 0 0		3 3 3 3 3 3 3 3
B	3 3 3 3 3 3 3 3	3 3 3 3 3 3 3 3		

59

T			0 0 0 0 0 0 0 0	
A	0 0 0 0 0 0 0 0	3 3 3 3 3 3 3 3	3 3 3 3 3 3 3 3	
B	3 3 3 3 3 3 3 3			6 6 6 6 6 6 6 6
				6 6 6 6 6 6 6 6

63

17

T				
A		0 0 0 0 0 0 0 0	0 0 0 0 0 0 0 0	
B	3 3 3 3 3 3 3 3	3 3 3 3 3 3 3 3	3 3 3 3 3 3 3 3	
	1 1 1 1 1 1 1 1			

T	0 0 0 0 0 0 0 0		0 0 0 0 0 0 0 0	0 0 0 0 0 0 0 0
A		0 0 0 0 0 0 0 0		
B	3 3 3 3 3 3 3 3	3 3 3 3 3 3 3 3	3 3 3 3 3 3 3 3	3 3 3 3 3 3 3 3

T			0 0 0 0 0 0 0 0	0 0 0 0 0 0 0 0
A		3 3 3 3 3 3 3 3		
B	6 6 6 6 6 6 6 6	1 1 1 1 1 1 1 1	3 3 3 3 3 3 3 3	3 3 3 3 3 3 3 3

T		0 0 0 0 0 0 0 0		
A				
B	3 3 3 3 3 3 3 3	3 3 3 3 3 3 3 3	3 3 3 3 3 3 3 3	3 3 3 3 3 3 3 3

T			0	0	
A		3 3 0 0	0	0	
B	6 6 6 6 6 6 6 6	1 1 1 1 5 5 5 5	3	3	

♩ = 120,000000
65



69



73



78



80

26



Nightwish - White Night Fantasy

5-string Electric Bass

♩ = 120,000000

16



20



24



28



32



36



40



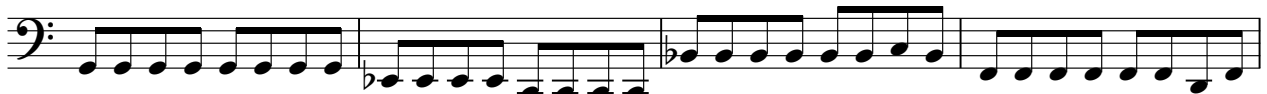
44



48



52



V.S.

56



60



64



68



72



77



81



86



90



94



96

The musical notation is written on a five-line staff with a bass clef. It consists of three measures. The first measure contains eight eighth notes: G2, F2, E2, D2, C2, B1, A1, and G1. The second measure contains a half note G1. The third measure contains a whole note G1. A bar line is placed after the second measure, and a measure rest for 9 measures is indicated by a thick black bar above the staff.

9

Nightwish - White Night Fantasy

Synth Strings

♩ = 120,000000

1

10

19

28

37

46

55

64

73

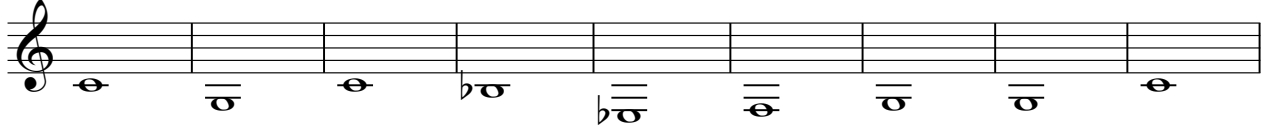
82

V.S.

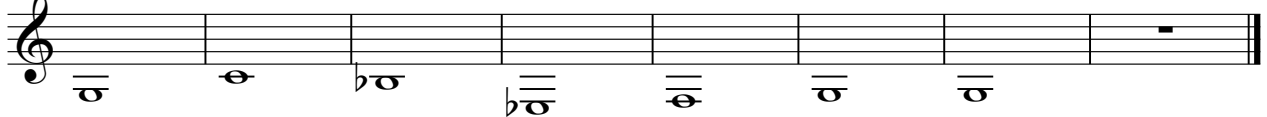
2

Synth Strings

91



100



Lead 6 (Voice)

Nightwish - White Night Fantasy

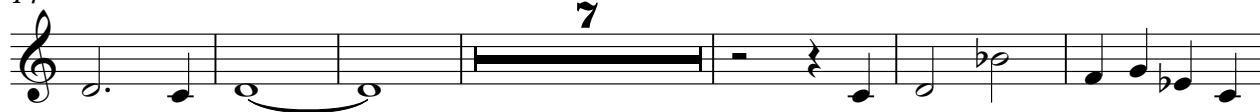
♩ = 120,000000



7



14



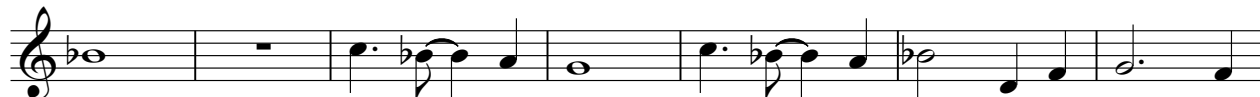
27



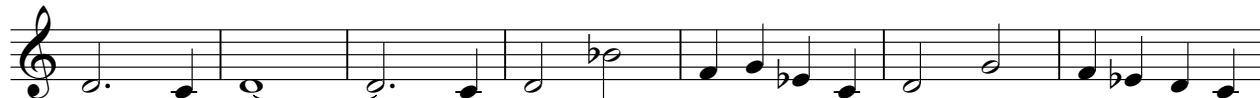
34



40



47



54



61



2

Lead 6 (Voice)

83



90



97



102



Nightwish - White Night Fantasy

Solo

♩ = 120,000000

16

20

24

59

85

89

93

97

101

104