

A.F.I - The Leaving Song Pt. 2

$\text{♩} = 110,000107$

Jazz Guitar

Electric Guitar

7-string Electric Guitar

5-string Electric Bass

4

$\text{♩} = 92,000130$

E. Gtr.

E. Bass

8

E. Gtr.

E. Bass

10

E. Gtr.

E. Bass

12

E. Gtr.

E. Bass

14

E. Gtr.

E. Gtr.

E. Bass

16

E. Gtr.

E. Gtr.

E. Bass

18

E. Gtr.

E. Gtr.

E. Bass

20

E. Gtr.

E. Bass

22

E. Gtr.

E. Bass

E. Gtr. TAB 2 1 1 4 4 4 4 4 2 1 1 4 4 4 4 4

E. Bass

E. Gtr. TAB 2 4 6 4 4 6 6 6 1 2 2 2 0 0 0 0 2 2 2

E. Bass

E. Gtr. TAB 2 1 1 4 4 4 4 4 6 4 4 2 2 4 4 4

E. Bass

E. Gtr. TAB 2 4 6 4 4 6 6 4 6 6 1 2 2 0 0 0 0 2 2 2

E. Bass

E. Gtr. TAB 4 6 6 6

E. Bass

E. Gtr. TAB

E. Bass

4

36

E. Gtr. TAB

3	2 2 2 2	3 3 3 3	3 3	3	2 2 2 2	3 3	1 2 4
4	4 4 4 4	1 1 1 1	4 4	4	4 4 4 4	1 1 1 1	2 2 2 4
6	1 1 1 1	4 4	3 4 3	6	1 1 1 1	4 4	2 2 2 4
6	4 4 4	4 4	4	6	4 4 4	4 4	3
6	6 6 6	2 2	4	6	6 6 6	2 2	

E. Bass

38

E. Gtr. TAB

3	2 2 2 2	3 3	0	4	0	4	0	2 2
4	4 4 4 4	4 4	1	4	4	0	4	4 4
6	1 1 1 1	4 4	1	3	3	3	3	4 4
6	4 4 4	4 4	1	3	1	1	4	4 4
6	6 6 6	2 2	4	4	4	4	4	4 4

E. Bass

40

E. Gtr. TAB

3	2 2 2 2	3 3	3	2 2 2 2	3 3	1 2 4
4	4 4 4 4	4 4	4	4 4 4 4	1 1 1 1	2 2 2 4
6	1 1 1 1	4 4	3 4 3	1 1 1 1	4 4	2 2 2 4
6	4 4 4	4 4	4	1 1 1 1	4 4	3
6	6 6 6	2 2	4	1 1 1 1	2 2	

E. Bass

42

E. Gtr.

E. Gtr. TAB

3	2 2 2 2	3 3	0	4	0	4	0	2 2
4	4 4 4 4	4 4	1	4	4	0	4	4 4
6	1 1 1 1	4 4	1	3	3	3	3	4 4
6	4 4 4	4 4	1	3	1	1	4	4 4
6	6 6 6	2 2	4	4	4	4	4	4 4

E. Bass

44

E. Gtr. TAB

6	6 6 6 6	6 6 6 6	6 6 6 6	6 6 6 6	6 6 6 6	6 6 6 6	6 6 6 6	6 6 6 6
6	6 6 6 6	6 6 6 6	6 6 6 6	6 6 6 6	6 6 6 6	6 6 6 6	6 6 6 6	6 6 6 6

E. Bass

46

E. Gtr. TAB

6	6 6 6 6	6 6 6 6	6 6 6 6	6 6 6 6	6 6 6 6	3 3 3
6	6 6 6 6	6 6 6 6	6 6 6 6	6 6 6 6	6 6 6 6	4 4 4
6	6 6 6 6	6 6 6 6	6 6 6 6	6 6 6 6	6 6 6 6	6 6 6
6	6 6 6 6	6 6 6 6	6 6 6 6	6 6 6 6	6 6 6 6	6 6 6

E. Bass

E. Gtr.

TAB

1 1 4 1 4 4 6 6

11 6 6 6 4 4 6 6

16 16 16 16

?

E. Bass

6 3 7

Electric Guitar

A.F.I - The Leaving Song Pt. 2

♩ = 110,000107 ♩ = 92,000130

4 10

16

18

13

32

34

6

42

26 4

A.F.I - The Leaving Song Pt. 2

7-string Electric Guitar

♩ = 110,000107

Tablature for measures 1-4:

```

E 6 9 18 14 13 9 13 9 6 9 18 14 13 9 13 9 6 9 18 14 13 9 13 9 6 9 16 18 14 16 13
B 4
G
D
A
B
E
A
    
```

5 ♩ = 92,000130

Tablature for measures 5-8:

```

T 14 13 11 2 1 1 4 4 4 4 4 2 1 1 4 4 4 4 4
A 4 3 3 4 4 4 4 4 4 4 3 3 4 4 4 4 4
B 4 4 4 6 6 6 6 6 4 4 4 4 4 6 6 6 6 6 4 4 4
6 6 6 6 6 6 6 6 6 6 6 6 6 6 6 6 6 6 6 6
    
```

9

Tablature for measures 9-11:

```

T 2 4 6 4 4 4 4 6 6 1 2 2 2 1 1 4 4 4 4 4
A 4 6 3 8 3 3 2 2 0 0 0 0 2 2 2 4 4 4 4 4
B 4 4 6 6 6 6 6 6 4 4 4 4 4 4 4 4 4 6 6 6 6 6 4 4 4
6 6 6 6 6 6 6 6 6 6 6 6 6 6 6 6 6 6 6 6
    
```

12

Tablature for measures 12-15:

```

T 2 1 1 4 4 4 4 4 2 4 6 4 4 4 4 4 1 2 2 2 1 1 4 4 4 4 4
A 4 3 3 4 4 4 4 4 4 6 3 4 4 4 4 4 1 1 1 0 0 0 0 2 2 2 4 4
B 4 4 4 6 6 6 6 6 6 4 4 4 4 4 6 6 6 6 6 6 4 4 4 6 6 6 6 6 4 4
6 6 6 6 6 6 6 6 6 6 6 6 6 6 6 6 6 6 6 6 6 6 6 6 6 6 6
    
```

16

Tablature for measures 16-20:

```

T 2 2 2 2 2 2 2 2 1 2 4
A 4 4 4 4 4 4 4 4 3 3 3 3 3 3 3 3 3 3 2 2 2 4
B 4 4 4 4 4 4 4 4 4 4 4 4 4 4 4 4 4 4 4 4 4 4 4 4 4 4 4
6 6 6 6 6 6 6 6 6 6 6 6 6 6 6 6 6 6 6 6 6 6 6 6 6 6 6
    
```

21

Tablature for measures 21-23:

```

T 2 2 2 2 0 4 4 0 2 2 2 2 4 4 4 4
A 3 3 3 3 3 3 3 3 1 3 3 3 3 3 3 3 3 3 2 4 4 4 4
B 4 4 4 4 4 4 4 4 4 4 4 4 4 4 4 4 4 4 4 4 4 4 4 4 4 4
6 6 6 6 6 6 6 6 6 6 6 6 6 6 6 6 6 6 6 6 6 6 6 6 6 6
    
```

24

Tablature for measures 24-26:

```

T 2 1 1 4 4 4 4 4 2 1 1 4 4 4 4 4 2 4 6 4 4 6 6 6
A 4 3 3 4 4 4 4 4 4 3 3 4 4 4 4 4 4 3 4 4 4 4 4 4
B 4 4 4 6 6 6 6 6 4 4 4 4 4 6 6 6 6 6 4 4 4 6 6 6 6 6 4 4
6 6 6 6 6 6 6 6 6 6 6 6 6 6 6 6 6 6 6 6 6 6 6 6 6 6
    
```

27

Tablature for measures 27-29:

```

T 1 2 2 2 2 0 0 0 0 2 2 2 2 1 1 4 4 4 4 4 6 4 4 2 2
A 2 2 2 2 2 2 2 2 1 1 1 1 1 1 4 4 4 4 4 4 6 6 4 4 4 4
B 4 4 4 4 4 4 4 4 4 4 4 4 4 4 4 4 4 4 4 4 4 4 4 4 4 4
6 6 6 6 6 6 6 6 6 6 6 6 6 6 6 6 6 6 6 6 6 6 6 6 6 6
    
```

30

Tablature for measures 30-32:

```

T 2 4 6 4 4 4 4 4 1 2 2 2 0 0 0 0 2 2 2 2 4 4 2 2
A 4 6 3 4 4 4 4 4 1 1 1 1 1 1 4 4 4 4 4 4 4 4 4 4 4
B 4 4 6 6 6 6 6 6 4 4 4 4 4 4 4 4 4 4 4 4 4 4 4 4 4 4
6 6 6 6 6 6 6 6 6 6 6 6 6 6 6 6 6 6 6 6 6 6 6 6 6 6
    
```


2 2 2 2
4 4 4 4
3 3 3 3
4 4 3 4 3
6 4 4 1 1 1 1 4 4 4 4
6 4 4 2 2 6
6 6 6

0 1 4 0 4 4 0 2 2
1 3 3 3
1 3 1 1 4 4
4 4 4 4 4 4
4 4 4 4 4 4
6 6

2 1 2 4 1 2 2 2 2 2 2
1 1 1 1 1 1 3
4 4 4 4 4 4
4 4 4 4 4 4
4 4 4 4 4 4
6 6

6 6 6 6 16 16
6 6 6 6 4 16 16
3 3 3 3 3 16 16
3 3 3 3 4 0 0 0 0 0 0 0 0
1 1 1 1 4 4 1 1 1 1 4 4 4 4 6 6
4 6 11 6 6 6 4 4 6 6
?

A.F.I - The Leaving Song Pt. 2

5-string Electric Bass

♩ = 110,000107 ♩ = 92,000130

4 2

9

12

15

19

21

23

25

28

31

V.S.

35



37



39



41



43



45



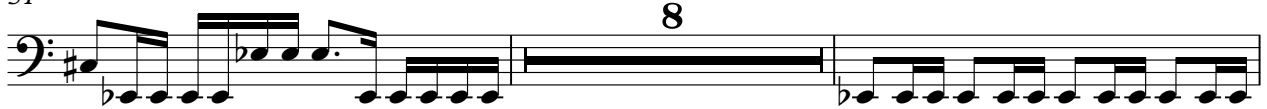
47



49



51



8

61



63

Musical notation for measure 63, featuring a bass clef and a key signature of one flat. The measure contains two groups of triplets, each marked with a '3' above the notes. The first group consists of eighth notes, and the second group consists of quarter notes. The notes are: G2, A2, B2 (triplet), G2, A2, B2 (triplet), C3, D3, E3, F3, G3, A3, B3, C4, D4, E4, F4, G4, A4, B4, C5.

65

Musical notation for measure 65, featuring a bass clef and a key signature of one flat. The measure contains a sequence of eighth notes: G2, A2, B2, C3, D3, E3, F3, G3, A3, B3, C4, D4, E4, F4, G4, A4, B4, C5.

67

Musical notation for measure 67, featuring a bass clef and a key signature of one flat. The measure contains a sequence of eighth notes: G2, A2, B2, C3, D3, E3, F3, G3, A3, B3, C4, D4, E4, F4, G4, A4, B4, C5.

69

Musical notation for measure 69, featuring a bass clef and a key signature of one flat. The measure contains a sequence of eighth notes: G2, A2, B2, C3, D3, E3, F3, G3, A3, B3, C4, D4, E4, F4, G4, A4, B4, C5.

71

Musical notation for measure 71, featuring a bass clef and a key signature of one flat. The measure contains a sequence of eighth notes: G2, A2, B2, C3, D3, E3, F3, G3, A3, B3, C4, D4, E4, F4, G4, A4, B4, C5.

73

Musical notation for measure 73, featuring a bass clef and a key signature of one flat. The measure contains a sequence of eighth notes: G2, A2, B2, C3, D3, E3, F3, G3, A3, B3, C4, D4, E4, F4, G4, A4, B4, C5. The measure concludes with a sextuplet (marked '6') and a triplet (marked '3') of eighth notes: G4, A4, B4, C5, G4, A4, B4, C5, G4, A4, B4, C5.