

E. Gtr.

T	5 5 5 5	4 4 4 4 4	4 4 4 4 4 4	1	1	4
A	1 4 4 4 4	3 3 3 3 3	0 0 0 0 0 0	1	1	3 3
B	3	1 1 1 1 1	3 3 3 3 3 3	4 4 4	6	1 1

E. Bass

E. Gtr.

T	1 1 1 1 1 1 1	1	0 0 0 0 0 0 0	0 0 0 0 0 0 0
A	3 1 1 1 1 1 1	1	0 0 0 0 0 0 0	0 4 4 4 4 4 4
B	1 6 6 6 6 6 6	6	2 2 2 2 2 2 2	2 2 2 2 2 2 2

E. Bass

E. Gtr.

T	0 4 4 4 4 4 4	1 4 4 4 4 4 4	4 3 3 3 3 3 3
A	4 5 5 5 5 5 5	0 3 3 3 3 3 3	3 3 3 3 3 3 3
B	2 3 3 3 3 3 3	3 1 1 1 1 1 1	1 1 1 1 1 1 1

E. Bass

E. Gtr.

T	3 1 1 1 4 4 4 4 4	4 4 4 4 4 4 4	1 4 4 4 4 4 4
A	3 1 1 1 3 3 3 3 3	5 5 5 5 5 5 5	0 3 3 3 3 3 3
B	1 6 6 6 1 1 1 1 1	3 3 3 3 3 3 3	3 1 1 1 1 1 1

E. Bass

E. Gtr.

T	4 3 3 3 3 3 3 3	3 1 1 1 4 4 4 4 4	4 4 4 4 4 4 4
A	1 3 3 3 3 3 3 3	3 1 1 1 3 3 3 3 3	5 5 5 5 5 5 5
B	1 1 1 1 1 1 1 1	1 6 6 6 1 1 1 1 1	3 3 3 3 3 3 3

E. Bass

E. Gtr.

T	1 4 4 4 4 4 4 4	4 3 3 3 3 3 3 3	3 1 1 1 4 4 4 4 4
A	0 3 3 3 3 3 3 3	3 3 3 3 3 3 3 3	3 1 1 1 3 3 3 3 3
B	3 1 1 1 1 1 1 1	1 3 3 3 3 3 3 3	3 1 1 1 1 1 1 1 1

E. Bass

E. Gtr.

T	4 4 4 4	4 4	1 4 4 4	4 4	4 4	4 3 3 3	3 3 3 3	3 3 3 3
A	5 5 5 5	5 5	0 3 3 3	3 3	3 3	3 3 3 3	3 3 3 3	3 3 3 3
B	3 3 3 3	3 3	3 1 1 1	1 1	1 1	1 1 1 1	1 1 1 1	1 1 1 1

E. Bass

♩ = 138,000198

E. Gtr.

T	3 1 1 1	4 4 4 4	4 4 4 4	4
A	3 1 1 1	3 3 3 3	5 3 3 5	0 5 5 5
B	1 6 6 6	1 1 1 1	3 3 3 3	3 3 3 3

E. Gtr.

T		1 0 0 1	3	1 1	1
A			3	3 0 0	0
B		3 3 3 3	3	3 3 3	3

E. Bass

E. Gtr.

T				0 0	1 1 1		1 1 1 0 0 0	3 3 3 3
A				3 3 3 3	3 3 3 3	6 6 6	1 1 1 1 1 1 1 1	1 1 1 3 3
B				3 3 3 3	3 3 3 3	4 4 4		1 1

E. Bass

E. Gtr.

T	3	0 0	1 1 1	3	1 1 1 0 0 0	3 3 3 3
A	3	3 3 3 3	3 3 3 3	6 6 6	1 1 1 1 1 1 1 1	1 1 1 3 3
B	6	3 3 3 3	3 3 3 3	4 4 4	1	1 1

E. Bass

E. Gtr.

T	3	0 0	1 1 1	3	1 1 1 0 0 0	3 3 3 3
A	3	3 3 3 3	3 3 3 3	6 6 6	1 1 1 1 1 1 1 1	1 1 1 3 3
B	6	3 3 3 3	3 3 3 3	4 4 4	1	1 1

E. Bass

E. Gtr.

T	3	0 0	1 1 1	3	1 1 1 0 0 0	3 3 3 3
A	3	3 3 3 3	3 3 3 3	6 6 6	1 1 1 1 1 1 1 1	1 1 1 3 3
B	6	3 3 3 3	3 3 3 3	4 4 4	1	1 1

E. Bass

E. Gtr.

T	0 0	3 3 3 3	1 1 1	1 1 1 0 0 0	3 3 3 3	3	0 0	1	1 1
A	3	3 3 3 3	3 3 3 3	3 3 3 3	6 6 6	1	3	3 3 3	3
B	6	3 3 3 3	3 3 3 3	3 3 3 3	4 4 4	1	6	3 3 3	3

E. Bass

E. Gtr.

T	1 1 0 3	3 3 3	4 4 4 4 4 4 4	4 4 4 4 3 3 3 3	3 3 3 1 1 1 1	4 3 3 3 1 1 1 1
A	1 1 1 1	3 3 3	5 5 5 5 5 5 5	5 5 5 5 5 5 5	5 5 5 5 6 6 6 6	5 3 3 3 3 3 3 3
B	4 4	1 1 1	3 3 3 3 3 3 3	3 3 3 3 3 3 3	3 3 3 3 6 6 6 6	6 1 1 1 3 3 3 3

E. Bass

E. Gtr.

T	3 4 4 4 4 4 4 4	4 4 4 4 3 3 3 3	3 4 4 4 4 4 4 4	4 4 4 4 3 3 3 3	4 3 3 3 1 1 1 1
A	3 5 5 5 5 5 5 5	5 3 3 3 3 3 3 3	3 5 5 5 5 5 5 5	5 3 3 3 3 3 3 3	3 3 3 3 1 1 1 1
B	1 3 3 3 3 6 6 6	6 1 1 1 3 3 3 3	1 3 3 3 3 6 6 6	6 1 1 1 3 3 3 3	3 3 3 3 1 1 1 1

E. Bass

E. Gtr.

T	3 4 4 4 4 4 4 4	4 4 4 4 3 3 3 3	3 4 4 4	4 3 3 3 3 3 3 3	1
A	3 5 5 5 5 5 5 5	5 3 3 3 3 3 3 3	3 5 5 5	5 3 3 3 3 3 3 3	3
B	1 3 3 3 3 6 6 6	6 1 1 1 3 3 3 3	1 6 6 6	6 1 1 1 3 3 3 3	3

E. Bass

E. Gtr.

T	4 4 4 4 4 4	1 4 4 4 4 4	4 4 4 3 3 3 3 3 3 3 3	4 3 3 3 3 3 3 3 3
A	5 5 5 5 5 5	0 3 3 3 3 3	3 3 3 3 3 3 3 3 3	3 3 3 3 3 3 3 3 3
B	3 3 3 3 3 3	3 1 1 1 1 1	1 1 1 1 1 1 1 1 1	1 1 1 1 1 1 1 1 1

E. Bass

E. Gtr.

T	3 1 1 1	4 4 4 4 4	4 4 4 4 4	1 4 4 4 4 4 4 4
A	3 1 1 1	3 3 3 3 3	5 5 5 5 5	0 3 3 3 3 3 3 3
B	1 6 6 6	1 1 1 1 1 1	3 3 3 3 3	3 1 1 1 1 1 1 1

E. Bass

E. Gtr.

T	4	3	3	3	3	3	3	3	3	3	1	1	1	4	4	4	4	4	4	4	4	4	4	
A	3	3	3	3	3	3	3	3	3	3	3	1	1	1	3	3	3	3	3	3	5	5	5	5
B	1	1	1	1	1	1	1	1	1	1	1	6	6	6	1	1	1	1	1	1	3	3	3	3
											4	4	4							4	3	3	3	3

E. Bass

E. Gtr.

T	1	4	4	4	4	4	4	4	4	3	3	3	3	3	3	3	3	3	3	3	1	1	1	4	4	4	4	4	
A	0	3	3	3	3	3	3	3	3	3	3	3	3	3	3	3	3	3	3	3	3	1	1	1	3	3	3	3	3
B	3	1	1	1	1	1	1	1	1	1	3	3	3	3	3	3	3	3	3	3	3	1	1	1	1	1	1	1	1
	3										1	1	1	1	1	1	1	1	1	1	1	6	6	6	4	4	4		

E. Bass

E. Gtr.

T	4	4	4	4	4	4	4	1	4	4	4	4	4	4	4	4	4	3	3	3	3	3	3	3	3	3	3	3
A	5	5	5	5	5	5	5	0	3	3	3	3	3	3	3	3	3	3	3	3	3	3	3	3	3	3	3	3
B	3	3	3	3	3	3	3	3	1	1	1	1	1	1	1	1	1	1	1	1	1	1	1	1	1	1	1	1
	4							3																				

E. Bass

♩ = 140,000137

E. Gtr.

T	3	1	1	1	4	4	4	4	4	4	4	4	4	4	4	4	4	4	4	4	4	4	4	4	4	4	4	4
A	3	1	1	1	3	3	3	3	3	3	3	3	3	3	3	3	3	3	3	3	3	3	3	3	3	3	3	3
B	1	6	6	6	1	1	1	1	1	1	1	1	1	1	1	1	1	1	1	1	1	1	1	1	1	1	1	1
		4	4	4																								

E. Gtr.

T																												
A																												
B																												

E. Bass

T	1 1 1 0 0 0 3 3 3	0 0	1 1 1	1 1 1 0 0 0 3 3 3
A	3 1 1 1 1 1 1 1 1 1 3 3	3 3 3 3 3 3	3 3 3 3 3 3 6 6 6	3 1 1 1 1 1 1 1 1 1 3 3
B	1 1 1	6	4 4 4	1 1 1

83

T	0 0	1 1 1	1 1 1 0 0 0 3 3 3 3	0 0	1 1 1
A	3 3 3 3 3 3 3 3 3 6 6 6	3 3 3 3 3 3 3 3 3 3 3 3	3 3 3 3 3 3 3 3 3 3 3 3	3 3 3 3	3 3 3 3
B	6 4 4 4	1 1 1 1 1 1 1 1 1 1 1 1	1 1 1	6 4 4	6 6

86

T	1 1 0 3	4 4 4 4 4 4 4 4	3 3 3 1 1 1 1 1	1	3 4 4 4 4 4 4 4
A	1 1 1 1 3 3 3	5 5 5 5 5 5 5 5	4 4 4 4 3 3 3 3	3 3 3	3 5 5 5 5 5 5 5
B	4 4 6 6	3 3 3 3 3 4 4 4	6 1 1 1 1 1 1 1	3 3 3	1 3 3 3 3 6 6 6

90

T	3 3 3 1 1 1 1 1	1	3 3 3 1 1 1 1 1	1	3 4 4 4 4 4 4 4
A	4 4 4 4 3 3 3 3	3 4 4 4 4 4 4 4	4 4 4 4 3 3 3 3	3 3 3	3 5 5 5 5 5 5 5
B	5 3 3 3 3 3 3 3	3 5 5 5 5 5 5 5	5 3 3 3 3 3 3 3	3 3 3	1 1 1 1 3 3 3 3

94

♩ = 158,000351

T	3 3 3 1 1 1 1 1	1	4 4 4 4 4 4 4 4	1	1 4 4 4 4 4 4 4
A	4 4 4 4 3 3 3 3	3 4 4 4	4 5 5 5 5 5 5 5	3	0 3 3 3 3 3 3 3
B	6 1 1 1 1 1 1 1	1 6 6 6	6 3 3 3 3 3 3 3	3	3 1 1 1 1 1 1 1

99

T	4 3 3 3 3 3 3 3	3 1 1 1	4 4 4 4 4 4	4 4 4 4 4 4	1 4 4 4 4 4 4 4
A	3 3 3 3 3 3 3 3	3 1 1 1	3 3 3 3 3 3	5 5 5 5 5 5 5 5	0 3 3 3 3 3 3 3
B	1 1 1 1 1 1 1 1	1 6 6 6 1 1 1 1 1 1	4 3 3 3 3 3 3 3	3 3 3 3 3 3 3 3	3 1 1 1 1 1 1 1

103

T	4 3 3 3 3 3 3 3	3 1 1 1	4 4 4 4 4 4	4 4 4 4 4 4	1 4 4 4 4 4 4 4
A	3 3 3 3 3 3 3 3	3 1 1 1	3 3 3 3 3 3	5 5 5 5 5 5 5 5	0 3 3 3 3 3 3 3
B	1 1 1 1 1 1 1 1	1 6 6 6 1 1 1 1 1 1	4 3 3 3 3 3 3 3	3 3 3 3 3 3 3 3	3 1 1 1 1 1 1 1

107

T	4 3 3 3 3 3 3 3	3 1 1 1	4 4 4 4 4 4	4 4 4 4 4 4	1 4 4 4 4 4 4 4
A	3 3 3 3 3 3 3 3	3 1 1 1	3 3 3 3 3 3	5 5 5 5 5 5 5 5	0 3 3 3 3 3 3 3
B	1 1 1 1 1 1 1 1	1 6 6 6 1 1 1 1 1 1	4 3 3 3 3 3 3 3	3 3 3 3 3 3 3 3	3 1 1 1 1 1 1 1

111

T	4 3 3 3 3 3 3 3	3 1 1 1	4 4 4 4 4 4	4 4 4 4 4 4	1 4 4 4 4 4 4 4
A	3 3 3 3 3 3 3 3	3 1 1 1	3 3 3 3 3 3	5 5 5 5 5 5 5 5	0 3 3 3 3 3 3 3
B	1 1 1 1 1 1 1 1	1 6 6 6 1 1 1 1 1 1	4 3 3 3 3 3 3 3	3 3 3 3 3 3 3 3	3 1 1 1 1 1 1 1

113 ♩ = 140,000137

T	4 4 4 4 4	0 4 4	4
A	5 3 3 5 3	5 5 5	5
B	4 3 3 3 3	3 3 3	3

A.F.I - Wester

Electric Bass

♩ = 163,000076



5



9

♩ = 158,000351



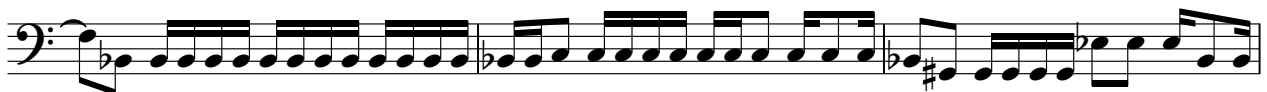
12



15



18



21



24



28



31



V.S.

♩ = 146,000320

34

First musical staff (measures 34-37) in bass clef. It begins with a key signature of one flat (B-flat) and a common time signature. The first measure contains a continuous eighth-note pattern. The second measure has a sharp sign above the staff. The third measure has a flat sign above the staff. The fourth measure has a sharp sign above the staff and a dotted quarter note.

38 ♩ = 163,000076

Second musical staff (measures 38-41) in bass clef. It begins with a key signature of one flat and a common time signature. The first measure has a flat sign above the staff. The second measure has a sharp sign above the staff. The third measure has a flat sign above the staff. The fourth measure has a sharp sign above the staff.

42

♩ = 158,000351

Third musical staff (measures 42-44) in bass clef. It begins with a key signature of one flat and a common time signature. The first measure has a flat sign above the staff. The second measure has a sharp sign above the staff. The third measure has a flat sign above the staff.

45

Fourth musical staff (measures 45-47) in bass clef. It begins with a key signature of one flat and a common time signature. The first measure has a sharp sign above the staff. The second measure has a flat sign above the staff. The third measure has a sharp sign above the staff.

48

Fifth musical staff (measures 48-50) in bass clef. It begins with a key signature of one flat and a common time signature. The first measure has a sharp sign above the staff. The second measure has a flat sign above the staff. The third measure has a sharp sign above the staff.

51

Sixth musical staff (measures 51-54) in bass clef. It begins with a key signature of one flat and a common time signature. The first measure has a sharp sign above the staff. The second measure has a flat sign above the staff. The third measure has a sharp sign above the staff. The fourth measure has a flat sign above the staff.

55

Seventh musical staff (measures 55-57) in bass clef. It begins with a key signature of one flat and a common time signature. The first measure has a flat sign above the staff. The second measure has a sharp sign above the staff. The third measure has a flat sign above the staff.

58

Eighth musical staff (measures 58-60) in bass clef. It begins with a key signature of one flat and a common time signature. The first measure has a flat sign above the staff. The second measure has a sharp sign above the staff. The third measure has a flat sign above the staff.

61

Ninth musical staff (measures 61-63) in bass clef. It begins with a key signature of one flat and a common time signature. The first measure has a flat sign above the staff. The second measure has a sharp sign above the staff. The third measure has a flat sign above the staff.

64

Tenth musical staff (measures 64-66) in bass clef. It begins with a key signature of one flat and a common time signature. The first measure has a sharp sign above the staff. The second measure has a flat sign above the staff. The third measure has a sharp sign above the staff.

67

♩ = 138,000198

71

78

83

87

91

95

♩ = 158,000351

99

102

105

108



111



113 = 140,000137

