

Dances With Wolves - Dances With Wolves

♩ = 80,000000

This system contains the first three measures of the piece. It features five staves: Rhythm (drum notation with 'x' marks), Staccato chords (treble clef, dense chordal patterns), Staccato chords (echo) (treble clef, similar to the first staff), Fretless Bass (bass clef, simple melodic line), and Strings (Chords) (treble clef, sustained chords). A tempo marking of ♩ = 80,000000 is present at the beginning.



4

This system contains measures 4 through 6. It features six staves: Rhythm, Staccato chords, Staccato chords (echo), Guitar Thang (treble clef, melodic line with a slur), Fretless Bass, and Strings (Chords). The tempo marking is not explicitly repeated but the rhythm remains consistent.



7

This system contains measures 7 through 9. It features six staves: Harmonica (Theme) (treble clef, melodic line), Rhythm, Staccato chords, Staccato chords (echo), Guitar Thang, and Fretless Bass. The tempo marking is not explicitly repeated.



10

Harmonica (Theme)

Rhythm

Staccato chords

Staccato chords (echo)

Fretless Bass

Strings (Chords)



13

Harmonica (Theme)

Rhythm

Staccato chords

Staccato chords (echo)

Fretless Bass

Strings (Chords)



16

Harmonica (Theme)

Rhythm

Staccato chords

Staccato chords (echo)

Fretless Bass

Strings (Chords)

Strings (Extra)

19

Harmonica (Theme)  
Rhythm  
Staccato chords  
Staccato chords (echo)  
Fretless Bass  
Strings (Chords)  
Strings (Extra)

Detailed description: This system of music covers measures 19, 20, and 21. The Harmonica (Theme) part features a melodic line with a long note in measure 20. The Rhythm part has a consistent eighth-note pattern. Staccato chords and their echo are played in a rhythmic, staccato fashion. The Fretless Bass provides a simple bass line. The Strings (Chords) part shows block chords, and the Strings (Extra) part has a melodic line with long notes and some grace notes.



22

Harmonica (Theme)  
Timpani  
Rhythm  
Extra Percussion  
Staccato chords  
Staccato chords (echo)  
Fretless Bass  
Strings (Chords)  
Strings (Extra)

Detailed description: This system of music covers measures 22, 23, and 24. The Harmonica (Theme) part continues the melodic theme. The Timpani part has a few notes in measure 24. The Rhythm part maintains the eighth-note pattern. Extra Percussion has some notes in measure 24. Staccato chords and their echo continue. The Fretless Bass part has a steady bass line. The Strings (Chords) part shows block chords, and the Strings (Extra) part has a melodic line with long notes and grace notes.

25

Horns

Trombones

Timpani

Rhythm

Extra Percussion

Staccato chords

Staccato chords (echo)

Fretless Bass

Strings (Theme)

Strings (Chords)

Strings (Extra)

Detailed description: This is a page of a musical score, page 4, starting at measure 25. The score is arranged in a vertical stack of ten staves. The top two staves are for Horns (treble clef) and Trombones (bass clef), both playing block chords. The Timpani staff (bass clef) shows a simple rhythmic pattern of quarter notes. The Rhythm staff (treble clef) features a complex rhythmic pattern with many eighth notes and rests. The Extra Percussion staff (treble clef) is mostly empty. The Staccato chords staff (treble clef) and Staccato chords (echo) staff (treble clef) both play rapid, staccato chordal patterns. The Fretless Bass staff (bass clef) plays a melodic line with eighth notes. The Strings (Theme) staff (bass clef) plays a melodic line with eighth notes and rests. The Strings (Chords) staff (treble clef) plays block chords with a slur. The Strings (Extra) staff (treble clef) plays a melodic line with eighth notes.

28

Horns

Trombones

Timpani

Rhythm

Extra Percussion

Staccato chords

Staccato chords (echo)

Fretless Bass

Strings (Theme)

Strings (Chords)

Strings (Extra)

Detailed description: This is a page of a musical score, page 5, starting at measure 28. The score is arranged in a grand staff format with ten staves. The instruments are: Horns (top staff, treble clef), Trombones (second staff, bass clef), Timpani (third staff, bass clef), Rhythm (fourth staff, alto clef), Extra Percussion (fifth staff, alto clef), Staccato chords (sixth staff, treble clef), Staccato chords (echo) (seventh staff, treble clef), Fretless Bass (eighth staff, bass clef), Strings (Theme) (ninth staff, alto clef), Strings (Chords) (tenth staff, bass clef), and Strings (Extra) (eleventh staff, treble clef). The music features a complex rhythmic pattern with many rests and staccato chords. The Horns and Trombones play block chords. The Timpani has a simple rhythmic pattern. The Rhythm and Extra Percussion parts are highly rhythmic with many 'x' marks indicating rests. The Staccato chords and Staccato chords (echo) parts consist of rapid, repeated chords. The Fretless Bass plays a simple melodic line. The Strings (Theme) part has a melodic line with many accidentals. The Strings (Chords) part plays block chords. The Strings (Extra) part has a melodic line with many accidentals.

31

Horns

Trombones

Timpani

Rhythm

Extra Percussion

Staccato chords

Staccato chords (echo)

Fretless Bass

Strings (Theme)

Strings (Chords)

Strings (Extra)



34

Timpani

Rhythm

Extra Percussion

Staccato chords

Staccato chords (echo)

Fretless Bass

Strings (Theme)

Strings (Chords)

37

Horns

Trombones

Timpani

Rhythm

Extra Percussion

Staccato chords

Staccato chords (echo)

Fretless Bass

Strings (Theme)

Strings (Chords)



39

Rhythm

Staccato chords

Staccato chords (echo)

Fretless Bass

Strings (Theme)

Strings (Chords)

42

Harmonica (Theme)

Rhythm

Staccato chords

Staccato chords (echo)

Fretless Bass

Strings (Theme)

Strings (Chords)



45

Harmonica (Theme)

Rhythm

Staccato chords

Staccato chords (echo)

Fretless Bass

Strings (Theme)

Strings (Chords)



48

Rhythm

Staccato chords

Staccato chords (echo)

Fretless Bass

Strings (Theme)

Strings (Chords)



51

Harmonica (Theme)

Rhythm

Staccato chords

Staccato chords (echo)

Fretless Bass

Strings (Chords)



54

Harmonica (Theme)

Horns

Trombones

Timpani

Rhythm

Extra Percussion

Staccato chords

Staccato chords (echo)

Fretless Bass

Strings (Theme)

Strings (Chords)

Strings (Extra)

Horns (Extra)

57

Horns

Trombones

Timpani

Rhythm

Extra Percussion

Staccato chords

Staccato chords (echo)

Fretless Bass

Strings (Theme)

Strings (Chords)

Strings (Extra)

Horns (Extra)

Detailed description: This page of a musical score covers measures 57, 58, and 59. The score is arranged in a vertical stack of staves. The top two staves are for Horns (treble clef) and Trombones (bass clef), both in a key signature of one flat. The Horns part features block chords in measures 57 and 58, and a more active line in measure 59. The Trombones part provides harmonic support with block chords. The Timpani part has a simple rhythmic pattern of quarter notes. The Rhythm section consists of a snare drum and a hi-hat, with the snare playing a consistent eighth-note pattern. The Extra Percussion part has a few notes in measure 59. The Staccato chords part features a series of chords in measure 59. The Staccato chords (echo) part has a similar pattern in measure 59. The Fretless Bass part has a few notes in measure 59. The Strings (Theme) part has a melodic line in measure 59. The Strings (Chords) part has block chords in measures 57 and 58, and a more active line in measure 59. The Strings (Extra) part has a melodic line in measure 59. The Horns (Extra) part has a melodic line in measure 59.

60

This musical score block covers measures 60 to 62. It features ten staves: Horns, Trombones, Timpani, Rhythm, Extra Percussion, Staccato chords, Staccato chords (echo), Fretless Bass, Strings (Theme), and Strings (Chords). The Horns and Trombones parts consist of block chords. The Timpani part has a simple rhythmic pattern. The Rhythm and Extra Percussion parts are highly rhythmic, with the Extra Percussion including a triplet in measure 62. The Staccato chords and Staccato chords (echo) parts feature rapid, repeated chordal patterns. The Fretless Bass part has a simple melodic line. The Strings (Theme) part has a melodic line in the first measure. The Strings (Chords) part has block chords. The Horns (Extra) part has a melodic line.



63

This musical score block covers measures 63 to 65. It features six staves: Harmonica (Theme), Rhythm, Staccato chords, Staccato chords (echo), Fretless Bass, and Strings (Chords). The Harmonica (Theme) part has a melodic line. The Rhythm part has a rhythmic pattern. The Staccato chords and Staccato chords (echo) parts feature rapid, repeated chordal patterns. The Fretless Bass part has a simple melodic line. The Strings (Chords) part has block chords.

66

Harmonica (Theme)  
Rhythm  
Staccato chords  
Staccato chords (echo)  
Fretless Bass  
Strings (Chords)

Detailed description: This block contains the musical score for measures 66, 67, and 68. The score is arranged in six staves. The Harmonica (Theme) staff shows a melodic line starting with a quarter note, followed by a half note, and ending with a whole note. The Rhythm staff features a consistent eighth-note pattern with accents. The Staccato chords and Staccato chords (echo) staves consist of rapid, repeated chordal patterns. The Fretless Bass staff has a simple bass line with quarter notes. The Strings (Chords) staff shows sustained chordal textures.



69

Harmonica (Theme)  
Rhythm  
Staccato chords  
Staccato chords (echo)  
Fretless Bass  
Strings (Chords)

Detailed description: This block contains the musical score for measures 69, 70, and 71. The Harmonica (Theme) staff continues the melodic line from the previous section. The Rhythm staff maintains the eighth-note pattern. The Staccato chords and Staccato chords (echo) staves continue their respective patterns. The Fretless Bass staff has a bass line with quarter notes. The Strings (Chords) staff shows sustained chordal textures.

Harmonica (Theme)

Dances With Wolves - Dances With Wolves

♩ = 80,000000

8

14

20

25

18

47

4

55

10

68

2

Horns

Dances With Wolves - Dances With Wolves

♩ = 80,000000

24

A musical staff in treble clef with a key signature of one sharp (F#) and a 4/4 time signature. The first measure contains a whole rest. The number '24' is written above the staff. From measure 2 to measure 24, the staff contains a series of chords: G4, A4, B4, C5, D5, E5, F#5, G5, A5, B5, C6, D6, E6, F#6, G6, A6, B6, C7, D7, E7, F#7, G7, A7, B7, C8, D8, E8, F#8, G8, A8, B8, C9, D9, E9, F#9, G9, A9, B9, C10, D10, E10, F#10, G10, A10, B10, C11, D11, E11, F#11, G11, A11, B11, C12, D12, E12, F#12, G12, A12, B12, C13, D13, E13, F#13, G13, A13, B13, C14, D14, E14, F#14, G14, A14, B14, C15, D15, E15, F#15, G15, A15, B15, C16, D16, E16, F#16, G16, A16, B16, C17, D17, E17, F#17, G17, A17, B17, C18, D18, E18, F#18, G18, A18, B18, C19, D19, E19, F#19, G19, A19, B19, C20, D20, E20, F#20, G20, A20, B20, C21, D21, E21, F#21, G21, A21, B21, C22, D22, E22, F#22, G22, A22, B22, C23, D23, E23, F#23, G23, A23, B23, C24, D24, E24, F#24, G24, A24, B24, C25, D25, E25, F#25, G25, A25, B25, C26, D26, E26, F#26, G26, A26, B26, C27, D27, E27, F#27, G27, A27, B27, C28, D28, E28, F#28, G28, A28, B28, C29, D29, E29, F#29, G29, A29, B29, C30, D30, E30, F#30, G30, A30, B30, C31, D31, E31, F#31, G31, A31, B31, C32, D32, E32, F#32, G32, A32, B32, C33, D33, E33, F#33, G33, A33, B33, C34, D34, E34, F#34, G34, A34, B34, C35, D35, E35, F#35, G35, A35, B35, C36, D36, E36, F#36, G36, A36, B36, C37, D37, E37, F#37, G37, A37, B37, C38, D38, E38, F#38, G38, A38, B38, C39, D39, E39, F#39, G39, A39, B39, C40, D40, E40, F#40, G40, A40, B40, C41, D41, E41, F#41, G41, A41, B41, C42, D42, E42, F#42, G42, A42, B42, C43, D43, E43, F#43, G43, A43, B43, C44, D44, E44, F#44, G44, A44, B44, C45, D45, E45, F#45, G45, A45, B45, C46, D46, E46, F#46, G46, A46, B46, C47, D47, E47, F#47, G47, A47, B47, C48, D48, E48, F#48, G48, A48, B48, C49, D49, E49, F#49, G49, A49, B49, C50, D50, E50, F#50, G50, A50, B50, C51, D51, E51, F#51, G51, A51, B51, C52, D52, E52, F#52, G52, A52, B52, C53, D53, E53, F#53, G53, A53, B53, C54, D54, E54, F#54, G54, A54, B54, C55, D55, E55, F#55, G55, A55, B55, C56, D56, E56, F#56, G56, A56, B56, C57, D57, E57, F#57, G57, A57, B57, C58, D58, E58, F#58, G58, A58, B58, C59, D59, E59, F#59, G59, A59, B59, C60, D60, E60, F#60, G60, A60, B60, C61, D61, E61, F#61, G61, A61, B61, C62, D62, E62, F#62, G62, A62, B62, C63, D63, E63, F#63, G63, A63, B63, C64, D64, E64, F#64, G64, A64, B64, C65, D65, E65, F#65, G65, A65, B65, C66, D66, E66, F#66, G66, A66, B66, C67, D67, E67, F#67, G67, A67, B67, C68, D68, E68, F#68, G68, A68, B68, C69, D69, E69, F#69, G69, A69, B69, C70, D70, E70, F#70, G70, A70, B70, C71, D71, E71, F#71, G71, A71, B71, C72, D72, E72, F#72, G72, A72, B72, C73, D73, E73, F#73, G73, A73, B73, C74, D74, E74, F#74, G74, A74, B74, C75, D75, E75, F#75, G75, A75, B75, C76, D76, E76, F#76, G76, A76, B76, C77, D77, E77, F#77, G77, A77, B77, C78, D78, E78, F#78, G78, A78, B78, C79, D79, E79, F#79, G79, A79, B79, C80, D80, E80, F#80, G80, A80, B80, C81, D81, E81, F#81, G81, A81, B81, C82, D82, E82, F#82, G82, A82, B82, C83, D83, E83, F#83, G83, A83, B83, C84, D84, E84, F#84, G84, A84, B84, C85, D85, E85, F#85, G85, A85, B85, C86, D86, E86, F#86, G86, A86, B86, C87, D87, E87, F#87, G87, A87, B87, C88, D88, E88, F#88, G88, A88, B88, C89, D89, E89, F#89, G89, A89, B89, C90, D90, E90, F#90, G90, A90, B90, C91, D91, E91, F#91, G91, A91, B91, C92, D92, E92, F#92, G92, A92, B92, C93, D93, E93, F#93, G93, A93, B93, C94, D94, E94, F#94, G94, A94, B94, C95, D95, E95, F#95, G95, A95, B95, C96, D96, E96, F#96, G96, A96, B96, C97, D97, E97, F#97, G97, A97, B97, C98, D98, E98, F#98, G98, A98, B98, C99, D99, E99, F#99, G99, A99, B99, C100, D100, E100, F#100, G100, A100, B100, C101, D101, E101, F#101, G101, A101, B101, C102, D102, E102, F#102, G102, A102, B102, C103, D103, E103, F#103, G103, A103, B103, C104, D104, E104, F#104, G104, A104, B104, C105, D105, E105, F#105, G105, A105, B105, C106, D106, E106, F#106, G106, A106, B106, C107, D107, E107, F#107, G107, A107, B107, C108, D108, E108, F#108, G108, A108, B108, C109, D109, E109, F#109, G109, A109, B109, C110, D110, E110, F#110, G110, A110, B110, C111, D111, E111, F#111, G111, A111, B111, C112, D112, E112, F#112, G112, A112, B112, C113, D113, E113, F#113, G113, A113, B113, C114, D114, E114, F#114, G114, A114, B114, C115, D115, E115, F#115, G115, A115, B115, C116, D116, E116, F#116, G116, A116, B116, C117, D117, E117, F#117, G117, A117, B117, C118, D118, E118, F#118, G118, A118, B118, C119, D119, E119, F#119, G119, A119, B119, C120, D120, E120, F#120, G120, A120, B120, C121, D121, E121, F#121, G121, A121, B121, C122, D122, E122, F#122, G122, A122, B122, C123, D123, E123, F#123, G123, A123, B123, C124, D124, E124, F#124, G124, A124, B124, C125, D125, E125, F#125, G125, A125, B125, C126, D126, E126, F#126, G126, A126, B126, C127, D127, E127, F#127, G127, A127, B127, C128, D128, E128, F#128, G128, A128, B128, C129, D129, E129, F#129, G129, A129, B129, C130, D130, E130, F#130, G130, A130, B130, C131, D131, E131, F#131, G131, A131, B131, C132, D132, E132, F#132, G132, A132, B132, C133, D133, E133, F#133, G133, A133, B133, C134, D134, E134, F#134, G134, A134, B134, C135, D135, E135, F#135, G135, A135, B135, C136, D136, E136, F#136, G136, A136, B136, C137, D137, E137, F#137, G137, A137, B137, C138, D138, E138, F#138, G138, A138, B138, C139, D139, E139, F#139, G139, A139, B139, C140, D140, E140, F#140, G140, A140, B140, C141, D141, E141, F#141, G141, A141, B141, C142, D142, E142, F#142, G142, A142, B142, C143, D143, E143, F#143, G143, A143, B143, C144, D144, E144, F#144, G144, A144, B144, C145, D145, E145, F#145, G145, A145, B145, C146, D146, E146, F#146, G146, A146, B146, C147, D147, E147, F#147, G147, A147, B147, C148, D148, E148, F#148, G148, A148, B148, C149, D149, E149, F#149, G149, A149, B149, C150, D150, E150, F#150, G150, A150, B150, C151, D151, E151, F#151, G151, A151, B151, C152, D152, E152, F#152, G152, A152, B152, C153, D153, E153, F#153, G153, A153, B153, C154, D154, E154, F#154, G154, A154, B154, C155, D155, E155, F#155, G155, A155, B155, C156, D156, E156, F#156, G156, A156, B156, C157, D157, E157, F#157, G157, A157, B157, C158, D158, E158, F#158, G158, A158, B158, C159, D159, E159, F#159, G159, A159, B159, C160, D160, E160, F#160, G160, A160, B160, C161, D161, E161, F#161, G161, A161, B161, C162, D162, E162, F#162, G162, A162, B162, C163, D163, E163, F#163, G163, A163, B163, C164, D164, E164, F#164, G164, A164, B164, C165, D165, E165, F#165, G165, A165, B165, C166, D166, E166, F#166, G166, A166, B166, C167, D167, E167, F#167, G167, A167, B167, C168, D168, E168, F#168, G168, A168, B168, C169, D169, E169, F#169, G169, A169, B169, C170, D170, E170, F#170, G170, A170, B170, C171, D171, E171, F#171, G171, A171, B171, C172, D172, E172, F#172, G172, A172, B172, C173, D173, E173, F#173, G173, A173, B173, C174, D174, E174, F#174, G174, A174, B174, C175, D175, E175, F#175, G175, A175, B175, C176, D176, E176, F#176, G176, A176, B176, C177, D177, E177, F#177, G177, A177, B177, C178, D178, E178, F#178, G178, A178, B178, C179, D179, E179, F#179, G179, A179, B179, C180, D180, E180, F#180, G180, A180, B180, C181, D181, E181, F#181, G181, A181, B181, C182, D182, E182, F#182, G182, A182, B182, C183, D183, E183, F#183, G183, A183, B183, C184, D184, E184, F#184, G184, A184, B184, C185, D185, E185, F#185, G185, A185, B185, C186, D186, E186, F#186, G186, A186, B186, C187, D187, E187, F#187, G187, A187, B187, C188, D188, E188, F#188, G188, A188, B188, C189, D189, E189, F#189, G189, A189, B189, C190, D190, E190, F#190, G190, A190, B190, C191, D191, E191, F#191, G191, A191, B191, C192, D192, E192, F#192, G192, A192, B192, C193, D193, E193, F#193, G193, A193, B193, C194, D194, E194, F#194, G194, A194, B194, C195, D195, E195, F#195, G195, A195, B195, C196, D196, E196, F#196, G196, A196, B196, C197, D197, E197, F#197, G197, A197, B197, C198, D198, E198, F#198, G198, A198, B198, C199, D199, E199, F#199, G199, A199, B199, C200, D200, E200, F#200, G200, A200, B200, C201, D201, E201, F#201, G201, A201, B201, C202, D202, E202, F#202, G202, A202, B202, C203, D203, E203, F#203, G203, A203, B203, C204, D204, E204, F#204, G204, A204, B204, C205, D205, E205, F#205, G205, A205, B205, C206, D206, E206, F#206, G206, A206, B206, C207, D207, E207, F#207, G207, A207, B207, C208, D208, E208, F#208, G208, A208, B208, C209, D209, E209, F#209, G209, A209, B209, C210, D210, E210, F#210, G210, A210, B210, C211, D211, E211, F#211, G211, A211, B211, C212, D212, E212, F#212, G212, A212, B212, C213, D213, E213, F#213, G213, A213, B213, C214, D214, E214, F#214, G214, A214, B214, C215, D215, E215, F#215, G215, A215, B215, C216, D216, E216, F#216, G216, A216, B216, C217, D217, E217, F#217, G217, A217, B217, C218, D218, E218, F#218, G218, A218, B218, C219, D219, E219, F#219, G219, A219, B219, C220, D220, E220, F#220, G220, A220, B220, C221, D221, E221, F#221, G221, A221, B221, C222, D222, E222, F#222, G222, A222, B222, C223, D223, E223, F#223, G223, A223, B223, C224, D224, E224, F#224, G224, A224, B224, C225, D225, E225, F#225, G225, A225, B225, C226, D226, E226, F#226, G226, A226, B226, C227, D227, E227, F#227, G227, A227, B227, C228, D228, E228, F#228, G228, A228, B228, C229, D229, E229, F#229, G229, A229, B229, C230, D230, E230, F#230, G230, A230, B230, C231, D231, E231, F#231, G231, A231, B231, C232, D232, E232, F#232, G232, A232, B232, C233, D233, E233, F#233, G233, A233, B233, C234, D234, E234, F#234, G234, A234, B234, C235, D235, E235, F#235, G235, A235, B235, C236, D236, E236, F#236, G236, A236, B236, C237, D237, E237, F#237, G237, A237, B237, C238, D238, E238, F#238, G238, A238, B238, C239, D239, E239, F#239, G239, A239, B239, C240, D240, E240, F#240, G240, A240, B240, C241, D241, E241, F#241, G241, A241, B241, C242, D242, E242, F#242, G242, A242, B242, C243, D243, E243, F#243, G243, A243, B243, C244, D244, E244, F#244, G244, A244, B244, C245, D245, E245, F#245, G245, A245, B245, C246, D246, E246, F#246, G246, A246, B246, C247, D247, E247, F#247, G247, A247, B247, C248, D248, E248, F#248, G248, A248, B248, C249, D249, E249, F#249, G249, A249, B249, C250, D250, E250, F#250, G250, A250, B250, C251, D251, E251, F#251, G251, A251, B251, C252, D252, E252, F#252, G252, A252, B252, C253, D253, E253, F#253, G253, A253, B253, C254, D254, E254, F#254, G254, A254, B254, C255, D255, E255, F#255, G255, A255, B255, C256, D256, E256, F#256, G256, A256, B256, C257, D257, E257, F#257, G257, A257, B257, C258, D258, E258, F#258, G258, A258, B258, C259, D259, E259, F#259, G259, A259, B259, C260, D260, E260, F#260, G260, A260, B260, C261, D261, E261, F#261, G261, A261, B261, C262, D262, E262, F#262, G262, A262, B262, C263, D263, E263, F#263, G263, A263, B263, C264, D264, E264, F#264, G264, A264, B264, C265, D265, E265, F#265, G265, A265, B265, C266, D266, E266, F#266, G266, A266, B266, C267, D267, E267, F#267, G267, A267, B267, C268, D268, E268, F#268, G268, A268, B268, C269, D269, E269, F#269, G269, A269, B269, C270, D270, E270, F#270, G270, A270, B270, C271, D271, E271, F#271, G271, A271, B271, C272, D272, E272, F#272, G272, A272, B272, C273, D273, E273, F#273, G273, A273, B273, C274, D274, E274, F#274, G274, A274, B274, C275, D275, E275, F#275, G275, A275, B275, C276, D276, E276, F#276, G276, A276, B276, C277, D277, E277, F#277, G277, A277, B277, C278, D278, E278, F#278, G278, A278, B278, C279, D279, E279, F#279, G279, A279, B279, C280, D280, E280, F#280, G280, A280, B280, C281, D281, E281, F#281, G281, A281, B281, C282, D282, E282, F#282, G282, A282, B282, C283, D283, E283, F#283, G283, A283, B283, C284, D284, E284, F#284, G284, A284, B284, C285, D285, E285, F#285, G285, A285, B285, C286, D286, E286, F#286, G286, A286, B286, C287, D287, E287, F#287, G287, A287, B287, C288, D288, E288, F#288, G288, A288, B288, C289, D289, E289, F#289, G289, A289, B289, C290, D290, E290, F#290, G290, A290, B290, C291, D291, E291, F#291, G291, A291, B291, C292, D292, E292, F#292, G292, A292, B292, C293, D293, E293, F#293, G293, A293, B293, C294, D294, E294, F#294, G294, A294, B294, C295, D295, E295, F#295, G295, A295, B295, C296, D296, E296, F#296, G296, A296, B296, C297, D297, E297, F#297, G297, A297, B297, C298, D298, E298, F#298, G298, A298, B298, C299, D299, E299, F#299, G299, A299, B299, C300, D300, E300, F#300, G300, A300, B300, C301, D301, E301, F#301, G301, A301, B301, C302, D302, E302, F#302, G302, A302, B302, C303, D303, E303, F#303, G303, A303, B303, C304, D304, E304, F#304, G304, A304, B304, C305, D305, E305, F#305, G305, A305, B305, C306, D306, E306, F#306, G306, A306, B306, C307, D307, E307, F#307, G307, A307, B307, C308, D308, E308, F#308, G308, A308, B308, C309, D309, E309, F#309, G309, A309, B309, C310, D310, E310, F#310, G310, A310, B310, C311, D311, E311, F#311, G311, A311, B311, C312, D312, E312, F#312, G312, A312, B312, C313, D313, E313, F#313, G313, A313, B313, C314, D314, E314, F#314, G314, A314, B314, C315, D315, E315, F#315, G315, A315, B315, C316, D316, E316, F#316, G316, A316, B316, C317, D317, E317, F#317, G317, A317, B317, C318, D318, E318, F#318, G318, A318, B318, C319, D319, E319, F#319, G319, A319, B319, C320, D320, E320, F#320, G320, A320, B320, C321, D321, E321, F#321, G321, A321, B321, C322, D322, E322, F#322, G322, A322, B322, C323, D323, E323, F#323, G323, A323, B323, C324, D324, E324, F#324, G324, A324, B324, C325, D325, E325, F#325, G325, A325, B325, C326, D326, E326, F#326, G326, A326, B326, C327, D327, E327, F#327, G327, A327, B327, C328, D328, E328, F#328, G328, A328, B328, C329, D329, E329, F#329, G329, A329, B329, C330, D330, E330, F#330, G330, A330, B330, C331, D331, E331, F#331, G331, A331, B331, C332, D332, E332, F#332, G332, A332, B332, C333, D333, E333, F#333, G333, A333, B333, C334, D334, E334, F#334, G334, A334, B334, C335, D335, E335, F#335, G335, A335, B335, C336, D336, E336, F#336, G336, A336, B336, C337, D337, E337, F#337, G337, A337, B337, C338, D338, E338, F#338, G338, A338, B338, C339, D339, E339, F#339, G339, A339, B339, C340, D340, E340, F#340, G340, A340, B340, C341, D341, E341, F#341, G341, A341, B341, C342, D342, E342, F#342, G342, A342, B342, C343, D343, E343, F#343, G343, A343, B343, C344, D344, E344, F#344, G344, A344, B344, C345, D345, E345, F#345, G345, A345, B345, C346, D346, E346, F#346, G346, A346, B346, C347, D347, E347, F#347, G347, A347, B347, C348, D348, E348, F#348, G348, A348, B348, C349, D349, E349, F#349, G349, A349, B349, C350, D350, E350, F#350, G350, A350, B350, C351, D351, E351, F#351, G351, A351, B351, C352, D352, E352, F#352, G352, A352, B352, C353, D353, E353, F#353, G353, A353, B353, C354, D354, E354, F#354, G354, A354, B354, C355, D355, E355, F#355, G355, A355, B355, C356, D356, E356, F#356, G356, A356, B356, C357, D357, E357, F#357, G357, A357, B357, C358, D358, E358, F#358, G358, A358, B358, C359, D359, E359, F#359, G359, A359, B359, C360, D360, E360, F#360, G360, A360, B360, C361, D361, E361, F#361, G361, A361, B361, C362, D362,

Trombones

Dances With Wolves - Dances With Wolves

♩ = 80,000000

**24**

24

29

4

38

16

58

10

# Dances With Wolves - Dances With Wolves

Timpani

♩ = 80,000000

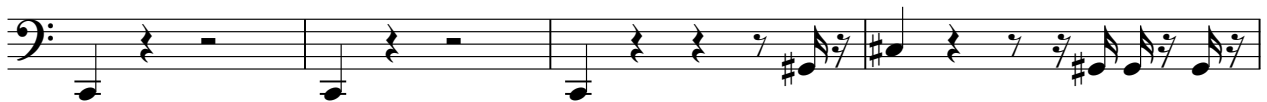
**23**



28

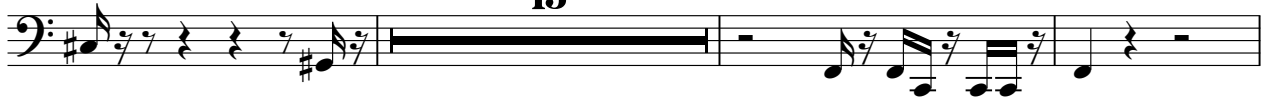


34



38

**15**



56



60

**10**





# Dances With Wolves - Dances With Wolves

## Rhythm

♩ = 80,000000

4

7

10

13

16

19

22

25

28

V.S.

31

34

37

40

43

46

49

52

55

58

The image displays ten musical staves, each representing a measure of music. Each staff is numbered from 31 to 58 in increments of 3. The notation is a rhythmic exercise for guitar, featuring a consistent pattern of notes and rests across all measures. The notes are primarily quarter notes and eighth notes, with some measures including beamed eighth notes. The rests are also quarter and eighth notes. The notation is presented in a standard musical staff format with a treble clef and a key signature of one flat (Bb). The measures are grouped into four sets of three, with the first measure of each set being the most complex, containing multiple beamed eighth notes and rests. The subsequent measures in each set simplify the pattern, focusing on the basic rhythmic structure.

Rhythm

61

Musical notation for measure 61, featuring a guitar staff with a treble clef and a double bar line. The notation includes a series of eighth notes and chords, with 'x' marks above the staff indicating fretted notes. The measure is divided into three measures by bar lines.

64

Musical notation for measure 64, featuring a guitar staff with a treble clef and a double bar line. The notation includes a series of eighth notes and chords, with 'x' marks above the staff indicating fretted notes. The measure is divided into three measures by bar lines.

67

Musical notation for measure 67, featuring a guitar staff with a treble clef and a double bar line. The notation includes a series of eighth notes and chords, with 'x' marks above the staff indicating fretted notes. The measure is divided into three measures by bar lines.

69

Musical notation for measure 69, featuring a guitar staff with a treble clef and a double bar line. The notation includes a series of eighth notes and chords, with 'x' marks above the staff indicating fretted notes. The measure is divided into three measures by bar lines.

# Dances With Wolves - Dances With Wolves

## Extra Percussion

♩ = 80,000000

23

2

29

3

34

36

38

15

55

60

10

3

# Dances With Wolves - Dances With Wolves

Staccato chords

♩ = 80,000000

3

5

7

9

11

13

15

17

19

V.S.



Staccato chords

41

43

45

47

49

51

53

55

59

Staccato chords

63



65



67



69





# Dances With Wolves - Dances With Wolves

Staccato chords (echo)

♩ = 80,000000



V.S.

## Staccato chords (echo)



Staccato chords (echo)

41

43

45

47

49

51

53

55

58

60

4

Staccato chords (echo)

63



65



67



69

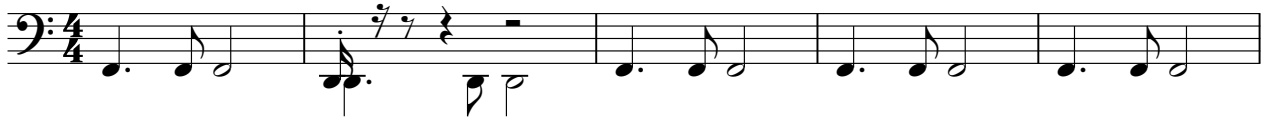




# Dances With Wolves - Dances With Wolves

Fretless Bass

♩ = 80,000000



6



11



17



23



28



34



41



47



53



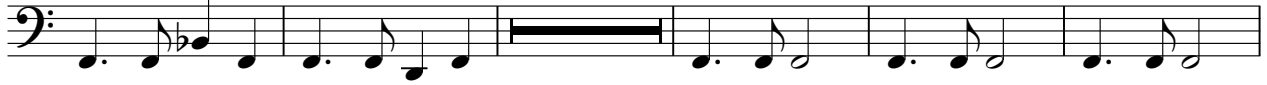
2

2

Fretless Bass

59

2



66



69



# Dances With Wolves - Dances With Wolves

## Strings (Theme)

♩ = 80,000000

24

27

30

33

37

43

55

59

6

4

4

2

12





Strings (Extra)

Dances With Wolves - Dances With Wolves

♩ = 80,000000

**16**

21

25

29

33

**22**

57

**2**

**12**

