

Deep Blue Sea - Deep Blue Sea

$\text{♩} = 140,000137$

Jazz Guitar

Jazz Guitar

Jazz Guitar

Electric Bass

Deep Blue Sea

3

J. Gtr.

J. Gtr.

J. Gtr.

E. Bass

Deep Blue Sea

6

J. Gtr.

J. Gtr.

J. Gtr.

E. Bass

Deep Blue Sea

Tab: T A B 0 2 2 5 0 5

8

J. Gtr.

J. Gtr.

J. Gtr.

E. Bass

Deep Blue Sea

Tab: T A B 0 5 0 2 2 5

10

J. Gtr.

J. Gtr.

J. Gtr.

E. Bass

Deep Blue Sea

T
A
B

2 5 0 5

12

J. Gtr.

J. Gtr.

J. Gtr.

E. Bass

Deep Blue Sea

T
A
B

5 5 0 5

14

J. Gtr.

J. Gtr.

J. Gtr.

E. Bass

Deep Blue Sea

The musical score for measures 14 and 15 consists of five staves. The top two staves are for the J. Gtr. (melody and accompaniment). The third staff is for the J. Gtr. (TAB), showing fret numbers: 2, 5, 3, 0, 0, 5. The fourth staff is for the E. Bass, showing notes: G2, G2, G2, G2. The fifth staff is for the vocal line 'Deep Blue Sea', showing notes: G4, G4, G4.

16

J. Gtr.

J. Gtr.

J. Gtr.

E. Bass

Deep Blue Sea

The musical score for measures 16 and 17 consists of five staves. The top two staves are for the J. Gtr. (melody and accompaniment). The third staff is for the J. Gtr. (TAB), showing fret numbers: 0, 5, 0, 2, 2, 2. The fourth staff is for the E. Bass, showing notes: G2, G2, G2, G2. The fifth staff is for the vocal line 'Deep Blue Sea', showing notes: G4, G4, G4.

18

J. Gtr.

J. Gtr.

J. Gtr.

E. Bass

Deep Blue Sea

T
A
B 2 2 0 0

20

J. Gtr.

J. Gtr.

J. Gtr.

E. Bass

Deep Blue Sea

T
A
B 0 0 5 5

22

J. Gtr.

J. Gtr.

J. Gtr.

E. Bass

Deep Blue Sea

The musical score for measures 22-23 consists of five staves. The top staff is the J. Gtr. melody in treble clef with a key signature of one sharp (F#). The second staff is the J. Gtr. rhythm in treble clef. The third staff is the J. Gtr. fretboard in treble clef, showing fret numbers: 0, 2, 2, 5, 0, 5. The fourth staff is the E. Bass in bass clef. The fifth staff is the vocal line for 'Deep Blue Sea' in treble clef.

24

J. Gtr.

J. Gtr.

J. Gtr.

E. Bass

Deep Blue Sea

The musical score for measures 24-25 consists of five staves. The top staff is the J. Gtr. melody in treble clef with a key signature of one sharp (F#). The second staff is the J. Gtr. rhythm in treble clef. The third staff is the J. Gtr. fretboard in treble clef, showing fret numbers: 0, 5, 0, 2, 2, 5. The fourth staff is the E. Bass in bass clef. The fifth staff is the vocal line for 'Deep Blue Sea' in treble clef.

26

J. Gtr.

J. Gtr.

J. Gtr.

E. Bass

Deep Blue Sea

28

J. Gtr.

J. Gtr.

J. Gtr.

E. Bass

Deep Blue Sea

30

J. Gtr.

J. Gtr.

J. Gtr.

E. Bass

Deep Blue Sea

T
A
B

5 2 3 5

32

J. Gtr.

J. Gtr.

J. Gtr.

E. Bass

Deep Blue Sea

T
A
B

5 5 0 0 0

35

J. Gtr.

J. Gtr.

J. Gtr.

E. Bass

Deep Blue Sea

Sequenced By

Barry Taylor

38

J. Gtr.

J. Gtr.

J. Gtr.

E. Bass

Sequenced By

Barry Taylor

40

J. Gtr.

J. Gtr.

J. Gtr.

E. Bass

Sequenced By

Barry Taylor

42

J. Gtr.

J. Gtr.

J. Gtr.

E. Bass

Sequenced By

Barry Taylor

44

J. Gtr.

J. Gtr.

J. Gtr. TAB

E. Bass

Sequenced By

Barry Taylor

46

J. Gtr.

J. Gtr.

J. Gtr. TAB

E. Bass

Sequenced By

Barry Taylor

48

J. Gtr.

J. Gtr.

J. Gtr.

E. Bass

Sequenced By

Barry Taylor

50

J. Gtr.

J. Gtr.

J. Gtr.

E. Bass

Sequenced By

Barry Taylor

52

J. Gtr.

J. Gtr.

J. Gtr.

E. Bass

Sequenced By

Barry Taylor

Detailed description: This block contains the musical notation for measures 52 and 53. It features five staves. The first two staves are for the J. Gtr. (melody and rhythm), the third is for the E. Bass, and the last two are for Sequenced By and Barry Taylor. The guitar tab for the J. Gtr. shows fret numbers 0 and 5. The Sequenced By and Barry Taylor staves show a single note in the first measure and a whole note in the second measure.

54

J. Gtr.

J. Gtr.

J. Gtr.

E. Bass

Sequenced By

Barry Taylor

Detailed description: This block contains the musical notation for measures 54 and 55. It features five staves. The first two staves are for the J. Gtr. (melody and rhythm), the third is for the E. Bass, and the last two are for Sequenced By and Barry Taylor. The guitar tab for the J. Gtr. shows fret numbers 0, 2, and 5. The Sequenced By and Barry Taylor staves show a single note in the first measure and a whole note in the second measure.

56

J. Gtr.

J. Gtr.

J. Gtr.

E. Bass

Sequenced By

Barry Taylor

58

J. Gtr.

J. Gtr.

J. Gtr.

E. Bass

Sequenced By

Barry Taylor

60

J. Gtr.

J. Gtr.

J. Gtr.

E. Bass

Sequenced By

Barry Taylor

62

J. Gtr.

J. Gtr.

J. Gtr.

E. Bass

Sequenced By

Barry Taylor

64

J. Gtr.

J. Gtr.

J. Gtr.

E. Bass

Sequenced By

Barry Taylor

67

J. Gtr.

J. Gtr.

J. Gtr.

E. Bass

Sequenced By

Barry Taylor

♩ = 140,000137

5

9

13

17

21

25

29

33

37

V.S.

41



45



49



53



57



61



65



67



Jazz Guitar

41

45

49

53

57

61

65

67

Deep Blue Sea - Deep Blue Sea

Jazz Guitar

♩ = 140,000137

D
T A
A G
B D
B A
D

5 5 | 5 5 | 5 5 | 5 5 | 5 5 | 0 2 2 5

7

T
A
B

0 5 | 0 5 | 0 2 2 5 | 2 5 | 0 5 | 5 5 0 5

14

T
A
B

2 5 | 3 0 0 5 | 0 5 | 0 2 2 2 | 2 2 | 0 0

20

T
A
B

0 0 | 5 5 | 0 2 2 5 | 0 5 | 0 5 | 0 2 2 5

26

T
A
B

2 5 | 0 5 | 5 0 | 3 5 | 5 2 | 3 5 | 5 5

33

T
A
B

0 0 | 0 0 | 5 0 | 5 0 2 4 | 5 5 | 0 2 2 5

39

T
A
B

0 5 | 0 5 | 0 2 2 5 | 2 5 | 0 5 | 5 5 0 5

46

T
A
B

2 5 | 3 0 0 5 | 0 5 | 0 2 2 2 | 2 2 | 0 0

52

T
A
B

0 0 | 5 5 | 0 2 2 5 | 0 5 | 0 5 | 0 2 2 5

58

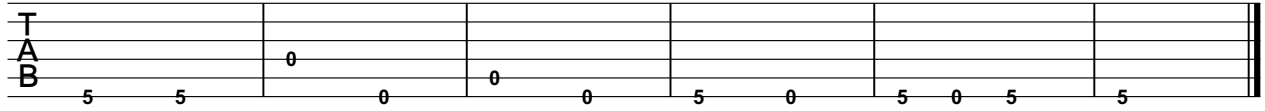
T
A
B

2 5 | 0 5 | 5 0 | 3 5 | 5 2 | 3 5

V.S.

2
64

Jazz Guitar

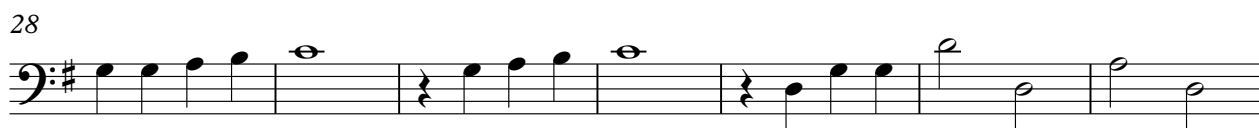


A guitar tablature consisting of six horizontal lines representing the strings. The strings are labeled T (top), A (middle), and B (bottom) on the left side. The tablature is divided into six measures by vertical bar lines. The notes are indicated by numbers 0, 5, and 0 placed below the lines. The sequence of notes across the measures is: Measure 1: 5, 5; Measure 2: 0; Measure 3: 0, 0; Measure 4: 5, 0; Measure 5: 5, 0, 5; Measure 6: 5. The tablature ends with a double bar line on the right.

Electric Bass

Deep Blue Sea - Deep Blue Sea

♩ = 140,000137

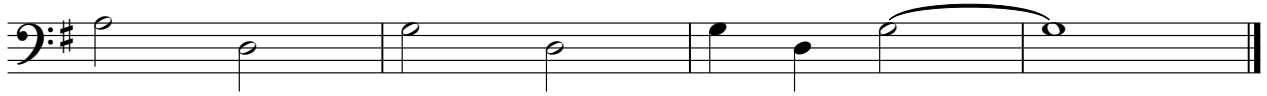


V.S.

2

Electric Bass

66



Deep Blue Sea

Deep Blue Sea - Deep Blue Sea

♩ = 140,000137

4



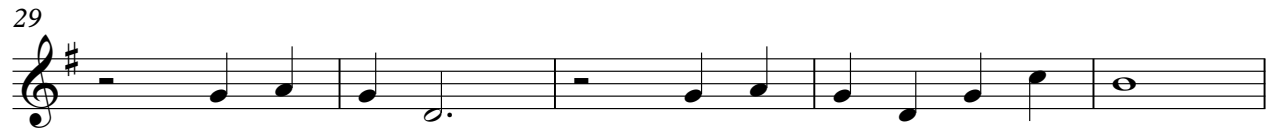
12



21

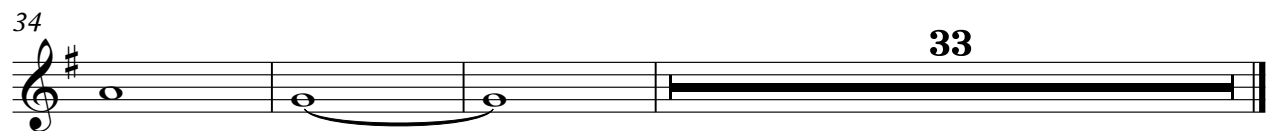


29



34

33




Sequenced By


Deep Blue Sea - Deep Blue Sea

♩ = 140,000137

36




43




52



61



65




Barry Taylor

Deep Blue Sea - Deep Blue Sea

♩ = 140,000137

36




43



52



61



65

