

Cranberries - Dreaming My Dreams

♩ = 130,000137

Dolores

Drum

Guitare

Basse

Cymbale

Dolores 2

Ensemble

♩ = 130,000137

4

Drum

Guitare

Basse

Ensemble

7

Drum

Guitare

Basse

Ensemble

10

Drum

Guitare

Basse

13

Drum

Guitare

Basse

16

Drum

Guitare

Basse

Detailed description: This musical score block covers measures 16, 17, and 18. The Drum part features a consistent rhythm of eighth notes with 'x' marks above them, indicating cymbal hits. The Guitare part (treble clef) plays a melodic line with eighth notes and a sharp sign (#) above the staff in measure 18, where it ends with a long sustain. The Basse part (bass clef) provides a steady eighth-note bass line.

19

Dolores

Drum

Guitare

Basse

Dolores 2

Detailed description: This musical score block covers measures 19, 20, and 21. Dolores (treble clef) has a melodic line with a sharp sign (#) above the staff. The Drum part continues with eighth notes and cymbal hits. The Guitare part (treble clef) is mostly silent, with a sharp sign (#) above the staff. The Basse part (bass clef) continues with eighth notes. Dolores 2 (treble clef) plays a supporting line with chords and a sharp sign (#) above the staff.

22 ♪ = 130,000137 ♪ = 130,000137

Dolores

Drum

Guitare

Basse

Dolores 2

Detailed description: This block contains the musical score for measures 22, 23, and 24. It features five staves: Dolores (vocal line), Drum (percussion), Guitare (guitar), Basse (bass), and Dolores 2 (second vocal line). The tempo is marked as ♪ = 130,000137. The Dolores staff has a treble clef and a key signature of one sharp (F#). The Drum staff uses a drum set notation with 'x' for cymbals and arrows for other drums. The Guitare staff has a treble clef and shows a sustained chord with a sharp sign. The Basse staff has a bass clef and a steady eighth-note rhythm. The Dolores 2 staff has a treble clef and plays chords and single notes.

25 ♪ = 130,000137 ♪ = 130,000137

Dolores

Drum

Guitare

Basse

Dolores 2

Detailed description: This block contains the musical score for measures 25, 26, and 27. It features five staves: Dolores (vocal line), Drum (percussion), Guitare (guitar), Basse (bass), and Dolores 2 (second vocal line). The tempo is marked as ♪ = 130,000137. The Dolores staff has a treble clef and a key signature of one sharp (F#). The Drum staff uses a drum set notation with 'x' for cymbals and arrows for other drums. The Guitare staff has a treble clef and shows a sustained chord with a sharp sign. The Basse staff has a bass clef and a steady eighth-note rhythm. The Dolores 2 staff has a treble clef and plays chords and single notes.

28 ♪ = 130,000137 ♪ = 130,000137 ♪ = 130,000137 ♪ = 130,000137

Dolores

Drum

Guitare

Basse

Dolores 2

31 ♪ = 130,000137 ♪ = 130,000137 ♪ = 130,000137 ♪ = 130,000137

Dolores

Drum

Guitare

Basse

Dolores 2

34 $\text{♩} = 130,000137$ $\text{♩} = 130,000137$ $\text{♩} = 130,000137$

Dolores

Drum

Guitare

Basse

Dolores 2

36 $\text{♩} = 130,000137$ $\text{♩} = 130,000137$ $\text{♩} = 130,000137$

Dolores

Drum

Guitare

Basse

Dolores 2

39 $\text{♩} = 130,000137 \text{♩}$ $\text{♩} = 130,000137 \text{♩}$ $\text{♩} = 130,000137 \text{♩}$ $\text{♩} = 130,000137 \text{♩}$ $\text{♩} = 130,000137 \text{♩}$ $\text{♩} = 130,000137 \text{♩}$ $\text{♩} = 130,000137 \text{♩}$

Dolores

Drum

Guitare

Basse

Dolores 2

Detailed description: This musical system covers measures 39 through 41. The top staff, labeled 'Dolores', shows a melodic line in treble clef with a key signature of one sharp (F#). Measure 39 starts with a quarter rest, followed by eighth and sixteenth notes, ending with a quarter note. Measure 40 continues the melodic line with similar rhythmic patterns. Measure 41 concludes with a whole note chord. The 'Dolores 2' staff follows a similar melodic pattern. The instrumental parts include a 'Drum' staff with a pattern of eighth and sixteenth notes, a 'Guitare' staff with a melodic line, and a 'Basse' (bass) staff with a steady eighth-note accompaniment.

42 $\text{♩} = 130,000137 \text{♩}$ $\text{♩} = 130,000137 \text{♩}$ $\text{♩} = 130,000137 \text{♩}$ $\text{♩} = 130,000137 \text{♩}$ $\text{♩} = 130,000137 \text{♩}$ $\text{♩} = 130,000137 \text{♩}$ $\text{♩} = 130,000137 \text{♩}$

Dolores

Drum

Guitare

Basse

Dolores 2

Ensemble

Detailed description: This musical system covers measures 42 through 44. Measure 42 begins with a whole note chord in the Dolores and Dolores 2 staves. The melodic lines continue through measure 43 and end with a whole note chord in measure 44. The 'Drum' staff features a consistent eighth-note accompaniment. The 'Guitare' and 'Basse' parts continue with their respective melodic and harmonic lines. The 'Ensemble' part at the bottom consists of a single bass staff with a sustained low-frequency accompaniment of eighth notes.

57

Dolores

Drum

Guitare

Basse

Dolores 2

Ensemble

60

$\text{♩} = 130,00008737$

Dolores

Drum

Guitare

Basse

Dolores 2

64 $\text{♩} = 130,000137$ $\text{♩} = 130,000137$ $\text{♩} = 130,000137$

Dolores

Drum

Guitare

Basse

Dolores 2

67 $\text{♩} = 130,000137$ $\text{♩} = 130,000137$ $\text{♩} = 130,000137$ $\text{♩} = 130,000137$ $\text{♩} = 130,000137$

Dolores

Drum

Guitare

Basse

Dolores 2

71 $\text{♩} = 130,000137$ $\text{♩} = 130,000137$ $\text{♩} = 130,000137$ $\text{♩} = 130,0001$

Dolores

Drum

Guitare

Basse

Dolores 2

Detailed description: This musical score block covers measures 71 to 73. It features five staves: Dolores (vocal line), Drum (percussion), Guitare (guitar), Basse (bass), and Dolores 2 (second vocal line). The Dolores part begins with a melodic line in treble clef, featuring a key signature of one sharp (F#) and a time signature of 3/4. The Drum part shows a consistent rhythmic pattern with 'x' marks above the staff indicating hits. The Guitare part consists of a series of chords and melodic fragments. The Basse part provides a steady bass line with eighth notes. The Dolores 2 part provides harmonic support with chords and some melodic movement.

74 $\text{♩} = 130,000137$ $\text{♩} = 130,000137$

Dolores

Drum

Guitare

Basse

Dolores 2

Detailed description: This musical score block covers measures 74 to 76. It features the same five staves as the previous block. The Dolores part continues its melodic line. The Drum part maintains its rhythmic pattern. The Guitare part shows more complex melodic and harmonic structures. The Basse part continues with a steady eighth-note bass line. The Dolores 2 part provides harmonic support with chords and melodic movement.

76 $\text{♩} = 130,000137 \text{ } \text{♩} = 130,000137 \text{ } \text{♩} = 130,000137 \text{ } \text{♩} = 130,000137 \text{ } \text{♩} = 130,000137 \text{ } \text{♩} = 130,000137 \text{ } \text{♩} = 130,000137$ 13

Dolores

Drum

Guitare

Basse

Dolores 2

79 $\text{♩} = 130,000137 \text{ } \text{♩} = 130,000137 \text{ } \text{♩} = 130,000137 \text{ } \text{♩} = 130,000137 \text{ } \text{♩} = 130,000137 \text{ } \text{♩} = 130,000137 \text{ } \text{♩} = 130,000137$

Dolores

Drum

Guitare

Basse

Dolores 2

82 $\text{♩} = 130, 000, 130, 000, 137, 130, 000, 137, 137 = 130, 000, 130, 000, 137, 137$

Dolores

Drum

Guitare

Basse

Dolores 2

Ensemble

$\text{♩} = 130, 000, 130, 000, 137, 130, 000, 137, 137 = 130, 000, 130, 000, 137, 137$

84 $\text{♩} = 130, 000, 130, 000, 137, 130, 000, 137, 137 = 130, 000, 130, 000, 137, 137$

Dolores

Drum

Guitare

Basse

Dolores 2

Ensemble

$\text{♩} = 130, 000, 130, 000, 137, 130, 000, 137, 137 = 130, 000, 130, 000, 137, 137$

87 $\text{♩} = 130,000137,0001370137 \text{ ♩} = 130,000137,0001370137$

Dolores

Drum

Guitare

Basse

Dolores 2

Ensemble

89 $\text{♩} = 130,000137,0001370137 \text{ ♩} = 130,000137,000137 \text{ ♩} = 130,000137,000137$

Dolores

Drum

Guitare

Basse

Dolores 2

Ensemble

92

Dolores

Drum

Guitare

Basse

Dolores 2

Detailed description: This system contains measures 92 through 95. Dolores (top staff) plays a melodic line in G major: G4, A4, B4, C5, B4, A4, G4. Drum (second staff) has a steady rhythm with snare, tom, and bass drum. Guitare (third staff) plays a sustained G chord. Basse (fourth staff) plays a steady bass line: G2, B1, G2, B1, G2, B1, G2, B1, G2, B1, G2, B1, G2, B1. Dolores 2 (bottom staff) plays a harmonic accompaniment in G major.

95

Dolores

Drum

Guitare

Basse

Dolores 2

Detailed description: This system contains measures 96 through 99. Dolores (top staff) continues her melody: G4, A4, B4, C5, B4, A4, G4. Drum (second staff) maintains the rhythm. Guitare (third staff) plays a sustained G chord. Basse (fourth staff) continues the bass line. Dolores 2 (bottom staff) plays the harmonic accompaniment.

97 $\text{♩} = 130,000137,000137,000137 \text{ } \text{♩} = 130,000137 \text{ } \text{♩} = 130,000137,000137$

Dolores

Drum

Guitare

Basse

Dolores 2

100 $\text{♩} = 130,000137,000137 = 130,000137 = 130,000137 \text{ } \text{♩} = 130,000137,000137$

Dolores

Drum

Guitare

Basse

Dolores 2

103

Dolores

Drum

Guitare

Basse

Dolores 2

106

Drum

Guitare

Basse

Ensemble

109

Drum

Guitare

Basse

Ensemble

112

Dolores

Drum

Guitare

Basse

Dolores 2

Ensemble

115 $J = 130,000,017,00137 = 130,001170,0103700137$

Dolores

Drum

Basse

Dolores 2

Ensemble

$J = 130,000,017,00137 = 130,001170,0103700137$

118 $J = 130,000,017,00137$

Dolores

Drum

Basse

Dolores 2

Ensemble

$J = 130,000,017,00137$

121 $\text{♩} = 130, 0001370, 0001370, 000137$

Dolores

Drum

Basse

Dolores 2

Ensemble

$\text{♩} = 130, 0001370, 0001370, 000137$

124 $\text{♩} = 130, 0001370, 0001370, 000137 = 130, 0001370, 0001370, 000137$

Dolores

Drum

Basse

Dolores 2

Ensemble

$\text{♩} = 130, 0001370, 0001370, 000137 = 130, 0001370, 0001370, 000137$

127 $\text{♩} = 130, 000, 000, 000, 3, 00137 = 130, 000, 130, 000, 130, 000, 137$

Dolores

Drum

Basse

Dolores 2

Ensemble $\text{♩} = 130, 000, 000, 000, 3, 00137 = 130, 000, 130, 000, 130, 000, 137$

130 $\text{♩} = 130, 000, 000, 000, 3, 00137 = 130, 000, 130, 000, 130, 000, 137$

Dolores

Drum

Basse

Dolores 2

134

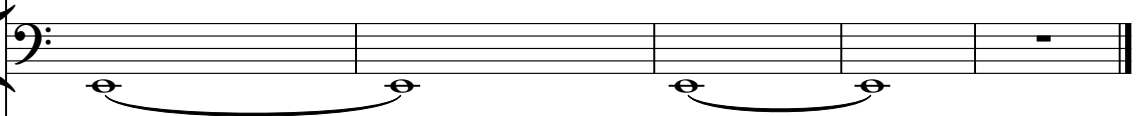
Dolores



1 3 0 0 0 0 1 3 7 0 0 0 0 0 3 7 0 0 1 3 7

This musical staff is written in treble clef with a key signature of two sharps (F# and C#). It begins with a treble clef and a sharp sign. The first two measures contain eighth-note patterns: the first measure has notes F#4, G4, A4, B4, and the second measure has notes C5, B4, A4, G4. The third measure contains a quarter rest followed by an eighth rest. The final three measures of the staff contain whole rests.

Basse



This musical staff is written in bass clef. It contains two measures of music. The first measure consists of a whole note chord with notes G2, B1, and D2. The second measure consists of a whole note chord with notes G2, B1, and D2. A slur is drawn under both measures, indicating they are to be played together.

Dolores 2



This musical staff is written in treble clef with a key signature of two sharps (F# and C#). It begins with a treble clef and a sharp sign. The first two measures contain eighth-note patterns: the first measure has notes F#4, G4, A4, B4, and the second measure has notes C5, B4, A4, G4. The third measure contains a quarter rest followed by an eighth rest. The final three measures of the staff contain whole rests.

Cranberries - Dreaming My Dreams

Dolores

Musical score for the song "Dreaming My Dreams" by Dolores O'Riordan. The score is written in 4/4 time and features a key signature of one sharp (F#). The tempo is marked as 130. The score consists of ten staves of music, with measure numbers 18, 22, 27, 32, 36, 40, 45, 50, 55, and 60 indicated at the beginning of each line. The notation includes various note values, rests, and dynamic markings. There are several instances of repeated notes and rests, some of which are marked with a '3' above them, indicating triplets. The score ends with a final measure marked with a '3' above it.

Dolores

3

117 ♩ = 130,001370,000137

♩ = 130,001370,000137



123 ♩ = 130,001370,000137



128 ♩ = 130,001370,000137

♩ = 130,001370,000137



134

♩ = 130,001370,000137

2



Cranberries - Dreaming My Dreams

Drum

♩ = 130,000137

5

9

14

19

♩ = 130,000137 ♩ = 130,000137

24

♩ = 130,000137 ♩ = 130,000137

28

♩ = 130,000137 ♩ = 130,000137 ♩ = 130,000137 ♩ = 130,000137 ♩ = 130,000137

33

♩ = 130,000137 ♩ = 130,000137 ♩ = 130,000137 ♩ = 130,000137 ♩ = 130,000137

37

♩ = 130,000137 ♩ = 130,000137 ♩ = 130,000137 ♩ = 130,000137

41

♩ = 130,000137 ♩ = 130,000137 ♩ = 130,000137 ♩ = 130,000137

The image displays a drum score for the song "Dreaming My Dreams" by Cranberries. It consists of ten staves of music, each representing a different section of the song. The notation includes various drum symbols such as snare (x), hi-hat (o), and bass drum (triangle), along with rests and beams. The tempo is consistently marked as 130,000137. The score is written in 4/4 time and includes measure numbers 5, 9, 14, 19, 24, 28, 33, 37, and 41. The notation is dense and detailed, capturing the complex rhythmic patterns of the original recording.

2

45

49

52

55

59

65

70

75

79

83

87

91

96

100

105

109

113

116

120

123

V.S.

4

127

$\text{♩} = 130,000137000137 = 130,000137000137$

130

$\text{♩} = 130,000137000137 = 130,000137000137$

Cranberries - Dreaming My Dreams

Guitare

♩ = 130,000137

6

11

15

22 ♩ = 130,000137 ♩ = 130,000137 ♩ = 130,000137 ♩ = 130,000137

31 ♩ = 130,000137 ♩ = 130,000137 ♩ = 130,000137 ♩ = 130,000137 ♩ = 130,000137

36 ♩ = 130,000137 ♩ = 130,000137 ♩ = 130,000137 ♩ = 130,000137

40 ♩ = 130,000137 ♩ = 130,000137 ♩ = 130,000137 ♩ = 130,000137 ♩ = 130,000137 ♩ = 130,000137 ♩ = 130,000137 ♩ = 130,000137

44 ♩ = 130,000137 ♩ = 130,000137 ♩ = 130,000137 ♩ = 130,000137 ♩ = 130,000137 ♩ = 130,000137 ♩ = 130,000137 ♩ = 130,000137

48 ♩ = 130,000137 ♩ = 130,000137 ♩ = 130,000137 ♩ = 130,000137 ♩ = 130,000137 ♩ = 130,000137 ♩ = 130,000137 ♩ = 130,000137

V.S.

53 $\text{♩} = 130,000137$ $\text{♩} = 130,000137$ $\text{♩} = 130,000137$ $\text{♩} = 130,000137$

59 $\text{♩} = 130,000137$ $\text{♩} = 130,000137$ $\text{♩} = 130,000137$ $\text{♩} = 130,000137$

67 $\text{♩} = 130,000137$ $\text{♩} = 130,000137$ $\text{♩} = 130,000137$ $\text{♩} = 130,000137$

74 $\text{♩} = 130,000137$ $\text{♩} = 130,000137$ $\text{♩} = 130,000137$ $\text{♩} = 130,000137$

78 $\text{♩} = 130,000137$ $\text{♩} = 130,000137$ $\text{♩} = 130,000137$ $\text{♩} = 130,000137$

82 $\text{♩} = 130,000137$ $\text{♩} = 130,000137$ $\text{♩} = 130,000137$ $\text{♩} = 130,000137$

86 $\text{♩} = 130,000137$ $\text{♩} = 130,000137$ $\text{♩} = 130,000137$ $\text{♩} = 130,000137$

90 $\text{♩} = 130,000137$ $\text{♩} = 130,000137$ $\text{♩} = 130,000137$ $\text{♩} = 130,000137$

98 $\text{♩} = 130,000137$ $\text{♩} = 130,000137$ $\text{♩} = 130,000137$ $\text{♩} = 130,000137$

106 $\text{♩} = 130,000137$ $\text{♩} = 130,000137$ $\text{♩} = 130,000137$ $\text{♩} = 130,000137$

Guitare

3

110

130,00000707137 130,00000707137 130,00000707137 130,00000707137

114

130,00000707137 130,00000707137 130,00000707137 130,00000707137

2 3 3 3

128

130,00000707137 130,00000707137 130,00000707137 130,00000707137

3 3 2

Cranberries - Dreaming My Dreams

Basse

♩ = 130,000137



5



9



13



17



21

♩ = 130,000137 ♩ = 130,000137



25

♩ = 130,000137 ♩ = 130,000137 ♩ = 130,000137 ♩ = 130,000137



29

♩ = 130,000137 ♩ = 130,000137 ♩ = 130,000137 ♩ = 130,000137 ♩ = 130,000137



33

♩ = 130,000137 ♩ = 130,000137 ♩ = 130,000137 ♩ = 130,000137 ♩ = 130,000137



37

♩ = 130,000137 ♩ = 130,000137 ♩ = 130,000137 ♩ = 130,000137



V.S.

82

♩ = 130,000137 130,000137 130,000137 130,000137 130,000137 130,000137 130,000137 130,000137 130,000137 130,000137 130,000137 130,000137

Bass guitar staff showing a continuous eighth-note bass line in measures 82 through 85.

86

♩ = 130,000137 130,000137 130,000137 130,000137 130,000137 130,000137 130,000137 130,000137 130,000137 130,000137 130,000137 130,000137

Bass guitar staff showing a continuous eighth-note bass line in measures 86 through 89.

90

♩ = 130,000137 130,000137 130,000137 130,000137 130,000137 130,000137 130,000137 130,000137 130,000137 130,000137 130,000137 130,000137

Bass guitar staff showing a continuous eighth-note bass line in measures 90 through 93.

94

♩ = 130,000137 130,000137 130,000137 130,000137 130,000137 130,000137 130,000137 130,000137 130,000137 130,000137 130,000137 130,000137

Bass guitar staff showing a continuous eighth-note bass line in measures 94 through 97.

98

♩ = 130,000137 130,000137 130,000137 130,000137 130,000137 130,000137 130,000137 130,000137 130,000137 130,000137 130,000137 130,000137

Bass guitar staff showing a continuous eighth-note bass line in measures 98 through 101.

102

♩ = 130,000137 130,000137 130,000137 130,000137 130,000137 130,000137 130,000137 130,000137 130,000137 130,000137 130,000137 130,000137

Bass guitar staff showing a continuous eighth-note bass line in measures 102 through 105.

106

♩ = 130,000137 130,000137 130,000137 130,000137 130,000137 130,000137 130,000137 130,000137 130,000137 130,000137 130,000137 130,000137

Bass guitar staff showing a continuous eighth-note bass line in measures 106 through 109.

110

♩ = 130,000137 130,000137 130,000137 130,000137 130,000137 130,000137 130,000137 130,000137 130,000137 130,000137 130,000137 130,000137

Bass guitar staff showing a continuous eighth-note bass line in measures 110 through 113.

114

♩ = 130,000137 130,000137 130,000137 130,000137 130,000137 130,000137 130,000137 130,000137 130,000137 130,000137 130,000137 130,000137

Bass guitar staff showing a continuous eighth-note bass line in measures 114 through 117.

118

♩ = 130,000137 130,000137 130,000137 130,000137 130,000137 130,000137 130,000137 130,000137 130,000137 130,000137 130,000137 130,000137

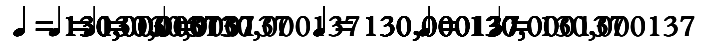
Bass guitar staff showing a continuous eighth-note bass line in measures 118 through 121.

V.S.

4

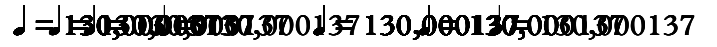
Basse

122

 130,3,0,0,0,1,3,7,00137 130,0,0130,0,0,0,3,7,00137



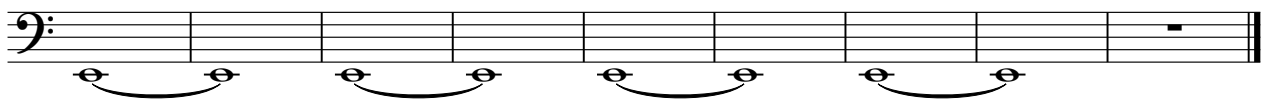
126

 130,3,0,0,0,1,3,7,00137 130,0,0130,0,0,0,3,7,00137



130

 130,3,0,0,0,1,3,7,00137  130,3,0,0,0,1,3,7,00137



Cranberries - Dreaming My Dreams

Cymbale

♩ = 130,000137

19

2

26

2

36

♩ = 130,000137

45

54

8

69

78

87

96

105

3

2

Cymbale

116

3 3 3

128

3 3 2

Cranberries - Dreaming My Dreams

Dolores 2

♩ = 130,000137

18

22 ♩ = 130,000137 ♩ = 130,000137 ♩ = 130,000137 ♩ = 130,000137

28 ♩ = 130,000137 = 130,000137 ♩ = 130,000137 ♩ = 130,000137 ♩ = 130,000137

32 ♩ = 130,000137 ♩ = 130,000137 ♩ = 130,000137 ♩ = 130,000137 ♩ = 130,000137

37 ♩ = 130,000137 ♩ = 130,000137 ♩ = 130,000137 ♩ = 130,000137

42 ♩ = 130,000137 ♩ = 130,000137 ♩ = 130,000137 ♩ = 130,000137 ♩ = 130,000137

46 ♩ = 130,000137 = 130,000137 ♩ = 130,000137 ♩ = 130,000137

51 ♩ = 130,000137 ♩ = 130,000137 ♩ = 130,000137 ♩ = 130,000137

56

Dolores 2

62 $\text{J} = 130,000137 = 130,000137 = 130,000137 = 130,000137 = 130,000137 = 130,000137 = 130,000137 = 130,000137 = 130,000137 = 130,000137$

68 $\text{J} = 130,000137 = 130,000137 = 130,000137 = 130,000137 = 130,000137 = 130,000137 = 130,000137 = 130,000137 = 130,000137 = 130,000137$

74 $\text{J} = 130,000137$ $\text{J} = 130,000137$ $\text{J} = 130,000137$ $\text{J} = 130,000137$ $\text{J} = 130,000137$ $\text{J} = 130,000137$ $\text{J} = 130,000137$ $\text{J} = 130,000137$ $\text{J} = 130,000137$ $\text{J} = 130,000137$

78 $\text{J} = 130,000137 = 130,000137 = 130,000137 = 130,000137 = 130,000137 = 130,000137 = 130,000137 = 130,000137 = 130,000137 = 130,000137$

83 $\text{J} = 130,000137 = 130,000137 = 130,000137 = 130,000137 = 130,000137 = 130,000137 = 130,000137 = 130,000137 = 130,000137 = 130,000137$

87 $\text{J} = 130,000137 = 130,000137 = 130,000137 = 130,000137 = 130,000137 = 130,000137 = 130,000137 = 130,000137 = 130,000137 = 130,000137$

93 $\text{J} = 130,000137 = 130,000137 = 130,000137 = 130,000137 = 130,000137 = 130,000137 = 130,000137 = 130,000137 = 130,000137 = 130,000137$

98 $\text{J} = 130,000137 = 130,000137 = 130,000137 = 130,000137 = 130,000137 = 130,000137 = 130,000137 = 130,000137 = 130,000137 = 130,000137$

103 $\text{J} = 130,000137 = 130,000137 = 130,000137 = 130,000137 = 130,000137 = 130,000137 = 130,000137 = 130,000137 = 130,000137 = 130,000137$

110 $\text{J} = 130,000137 = 130,000137 = 130,000137 = 130,000137 = 130,000137 = 130,000137 = 130,000137 = 130,000137 = 130,000137 = 130,000137$

The image displays a musical score for a piece titled "Dolores 2". It consists of ten staves of music, each representing a different measure or group of measures. The notation includes standard musical symbols such as treble clefs, notes, rests, and bar lines, along with guitar-specific symbols like chord diagrams (e.g., #8) and fret numbers. Above each staff, there are complex alphanumeric strings that appear to be guitar tablature or chord codes, such as "130,000137" and "130,000137 = 130,000137". The page number "2" is located in the top left corner, and the title "Dolores 2" is centered at the top.

Dolores 2

3

117 ♩ = 130

♩ = 130

Musical staff 117, starting with a treble clef and a key signature of one sharp (F#). The staff contains a series of chords and eighth-note patterns. The first measure features a complex chord with a dotted quarter note. The piece concludes with a final chord marked with a double bar line.

123 ♩ = 130

Musical staff 123, continuing the piece with a treble clef and one sharp key signature. It features eighth-note runs and chordal accompaniment, ending with a double bar line.

128 ♩ = 130

♩ = 130

Musical staff 128, showing a transition to a new section. It begins with a series of chords, followed by eighth-note patterns and a final chord with a double bar line.

134

♩ = 130

Musical staff 134, concluding the piece with eighth-note patterns and a final chord marked with a double bar line.

Cranberries - Dreaming My Dreams

Ensemble

♩ = 130,000137

9

♩ = 130,000137 0,000137 0,000137 137 130,000137 0,000137 0,000137 137 130,000

12 2 2

29

♩ = 130,000137 0,000137 0,000137 137 130,000137 0,000137 0,000137 137 130,000137 0,000137 0,000137 137 130,000137

38

47

♩ = 130,000137 0,000137 0,000137 137 130,000137 0,000137 0,000137 137 130,000137 0,000137 0,000137 137 130,000137

56

♩ = 130,000137 0,000137 0,000137 137 130,000137 0,000137 0,000137 137 130,000137

4

67

♩ = 130,000137 0,000137 0,000137 137 130,000137 0,000137 0,000137 137 130,000137 0,000137 0,000137 137 130,000137

76

♩ = 130,000137 0,000137 0,000137 137 130,000137 0,000137 0,000137 137 130,000137 0,000137 0,000137 137 130,000137

85

♩ = 130,000137 0,000137 0,000137 137 130,000137 0,000137 0,000137 137 130,000137 0,000137 0,000137 137 130,000137

94

♩ = 130,000137 0,000137 0,000137 137 130,000137 0,000137 0,000137 137 130,000137 0,000137 0,000137 137 130,000137

2 **Ensemble**

103

112

121

128