

Bob Marley - Is This Love

♩ = 121,000191

Whistling

Percussion

Steel Drums

Back Vocal

Bass Xylophone

Jazz Guitar

Jazz Guitar

Fretless Electric Bass

Percussive Organ

Percussive Organ

Rock Organ

FX 5 (Brightness)

♩ = 121,000191

5

Perc.

Bass Xyl.

J. Gtr.

J. Gtr.

E. Bass

Perc. Organ

Perc. Organ

Organ

8



Perc. Steel D. Bass Xyl. J. Gtr. J. Gtr. E. Bass Perc. Organ Perc. Organ Organ

I wan na love



11



Perc. Steel D. Bass Xyl. J. Gtr. J. Gtr. E. Bass Perc. Organ Perc. Organ Organ

you and treat you right. I wan na love

14



Perc.

Steel D.

Bass Xyl.

you ev er y day and ev er y night.

J. Gtr.

J. Gtr.

E. Bass

Perc. Organ

Perc. Organ

Organ



17



Perc.

Steel D.

Bass Xyl.

We'll be to geth er with a

J. Gtr.

J. Gtr.

E. Bass

Perc. Organ

Perc. Organ

Organ

20

Perc.

Steel D.

Bass Xyl.

roof right o ver our heads. We'll share the shel ter

J. Gtr.

J. Gtr.

E. Bass

Perc. Organ

Perc. Organ

Organ



23

Perc.

Steel D.

Bass Xyl.

of my sin gle bed. We'll share the same

J. Gtr.

J. Gtr.

E. Bass

Perc. Organ

Perc. Organ

Organ

26

Perc.

Steel D.

Bass Xyl.

room, oh Jah provide the bread.

J. Gtr.

J. Gtr.

E. Bass

Perc. Organ

Perc. Organ

Organ



29

Perc.

Steel D.

Bass Xyl.

Is this love, is this love, is this love, is this love that I'm

J. Gtr.

J. Gtr.

E. Bass

Perc. Organ

Perc. Organ

Organ

FX 5

32

Perc.

Steel D.

Bass Xyl.

J. Gtr.

J. Gtr.

E. Bass

Perc. Organ

Perc. Organ

Organ

FX 5

feel in? Is this love, is this love, is this



35

Perc.

Steel D.

Bass Xyl.

J. Gtr.

J. Gtr.

E. Bass

Perc. Organ

Perc. Organ

Organ

FX 5

love, is this love that I'm feel in?

38

Perc.

Steel D.

Bass Xyl.

J. Gtr.

J. Gtr.

E. Bass

Perc. Organ

Perc. Organ

Organ

I wan na know, wan na



41

Perc.

Steel D.

Bass Xyl.

J. Gtr.

J. Gtr.

E. Bass

Perc. Organ

Perc. Organ

Organ

know, wan na know now.

44

Whist.

Perc.

Steel D.

Bass Xyl.

I got to know, got to know, got to know now. I,

J. Gtr.

J. Gtr.

E. Bass

Perc. Organ

Perc. Organ

Organ



47

Whist.

Perc.

Steel D.

Bass Xyl.

I'm will ing and a ble, so

J. Gtr.

J. Gtr.

E. Bass

Perc. Organ

Perc. Organ

Organ



50

Whist.

Perc.

Steel D.

Bass Xyl.

I throw my cards on your ta ble.

J. Gtr.

E. Bass

Perc. Organ

Perc. Organ

Organ



53

Whist.

Perc.

Steel D.

Bass Xyl.

I wan na love you, I wan na love and treat, love

J. Gtr.

E. Bass

Perc. Organ

Perc. Organ

Organ

56

Perc.

Steel D.

Bass Xyl.

J. Gtr.

J. Gtr.

E. Bass

Perc. Organ

Perc. Organ

Organ

and treat you right. I wan na love you ev er y



59

Whist.

Perc.

Steel D.

Bass Xyl.

J. Gtr.

J. Gtr.

E. Bass

Perc. Organ

Perc. Organ

Organ

day and ev er y night. We'll be to geth er

62

Whist.

Perc.

Steel D.

Bass Xyl.

with a roof right o ver our heads. We'll share the shel

J. Gtr.

J. Gtr.

E. Bass

Perc. Organ

Perc. Organ

Organ



65

Whist.

Perc.

Steel D.

Bass Xyl.

ter, oh yeah, of my sin gle bed.

J. Gtr.

J. Gtr.

E. Bass

Perc. Organ

Perc. Organ

Organ

68

Whist.

Perc.

Steel D.

Bass Xyl.

We'll share the same room, oh

J. Gtr.

J. Gtr.

E. Bass

Perc. Organ

Perc. Organ

Organ



71

Whist.

Perc.

Steel D.

Bass Xyl.

Jah provides the bread. Is this love, is this love, is this

J. Gtr.

J. Gtr.

E. Bass

Perc. Organ

Perc. Organ

Organ

FX 5

74

Perc.

Steel D.

Bass Xyl.

love, is this love that I'm feel in? Is this

J. Gtr.

J. Gtr.

E. Bass

Perc. Organ

Perc. Organ

Organ

FX 5



77

Perc.

Steel D.

Bass Xyl.

love, is this love, is this love, is this love that I'm feel in?

J. Gtr.

J. Gtr.

E. Bass

Perc. Organ

Perc. Organ

Organ

FX 5

80

Perc.

Steel D.

Bass Xyl.

Wo- o- a- ah.

J. Gtr.

J. Gtr.

E. Bass

Perc. Organ

Perc. Organ

Organ



83

Perc.

Steel D.

Bass Xyl.

Oh, yes I know, yes I know, yes I know now.

J. Gtr.

J. Gtr.

E. Bass

Perc. Organ

Perc. Organ

Organ

86

Perc.

Steel D.

Bass Xyl.

Oh, yes I know, yes I know, yes I know now. I,

J. Gtr.

J. Gtr.

E. Bass

Perc. Organ

Perc. Organ

Organ



89

Whist.

Perc.

Steel D.

Bass Xyl.

I'm willing and a ble,

J. Gtr.

J. Gtr.

E. Bass

Perc. Organ

Perc. Organ

Organ

92

Whist.

Perc.

Steel D.

Bass Xyl.

so I throw my cards on your ta

J. Gtr.

J. Gtr.

E. Bass

Perc. Organ

Perc. Organ

Organ



95

Whist.

Perc.

Steel D.

Bass Xyl.

ble. See, I wan na love you, I wan na love

J. Gtr.

E. Bass

Perc. Organ

Perc. Organ

Organ



98

Whist.

Perc.

Steel D.

Bass Xyl.

and treat you, love and treat you right. I wan na love

J. Gtr.

J. Gtr.

E. Bass

Perc. Organ

Perc. Organ

Organ



101

Whist.

Perc.

Steel D.

Bass Xyl.

you ev er y day and ev er y night. We'll be to geth

J. Gtr.

J. Gtr.

E. Bass

Perc. Organ

Perc. Organ

Organ

104

Whist.

Perc.

Steel D.

Bass Xyl.

er with a roof right o ver our heads.

J. Gtr.

J. Gtr.

E. Bass

Perc. Organ

Perc. Organ

Organ



107

Whist.

Perc.

Steel D.

Bass Xyl.

We'll share the shel ter

J. Gtr.

J. Gtr.

E. Bass

Perc. Organ

Perc. Organ

Organ

110

Whist.

Perc.

Steel D.

Bass Xyl.  
of my sin gle bed.

J. Gtr.

J. Gtr.

E. Bass

Perc. Organ

Perc. Organ

Organ

# Bob Marley - Is This Love

## Whistling

♩ = 121,000191

44

50

59

64

69

89

97

104

108

(C) 1994 Tune 1000 Corporation ;1977, Polygram International Publishing, Inc.  
(C) 1994 Tune 1000 Corporation ;1977, Polygram International Publishing, Inc.

# Bob Marley - Is This Love

## Percussion

♩ = 121,000191

3

5

9

12

15

18

21

24

27

30

(C) 1994 Tune 1000 Corporation ;1977, Polygram International Publishing, Inc.  
(C) 1994 Tune 1000 Corporation ;1977, Polygram International Publishing, Inc.

V.S.

33

Measure 33: A single staff of music with a treble clef and a key signature of one flat. The notation includes a series of eighth notes with stems pointing up, and a series of eighth notes with stems pointing down. Above the staff, there are 'x' marks indicating fretted notes. The measure is divided into three measures by bar lines.

36

Measure 36: Similar to measure 33, featuring eighth notes with stems pointing up and down, and 'x' marks above the staff. The measure is divided into three measures by bar lines.

39

Measure 39: Similar to measure 33, featuring eighth notes with stems pointing up and down, and 'x' marks above the staff. The measure is divided into three measures by bar lines.

42

Measure 42: Similar to measure 33, featuring eighth notes with stems pointing up and down, and 'x' marks above the staff. The measure is divided into three measures by bar lines.

45

Measure 45: Similar to measure 33, featuring eighth notes with stems pointing up and down, and 'x' marks above the staff. The measure is divided into three measures by bar lines.

48

Measure 48: Similar to measure 33, featuring eighth notes with stems pointing up and down, and 'x' marks above the staff. The measure is divided into three measures by bar lines.

51

Measure 51: Similar to measure 33, featuring eighth notes with stems pointing up and down, and 'x' marks above the staff. This measure includes triplets of eighth notes, indicated by a bracket with the number '3' below them. The measure is divided into three measures by bar lines.

54

Measure 54: Similar to measure 33, featuring eighth notes with stems pointing up and down, and 'x' marks above the staff. The measure is divided into three measures by bar lines.

57

Measure 57: Similar to measure 33, featuring eighth notes with stems pointing up and down, and 'x' marks above the staff. The measure is divided into three measures by bar lines.

60

Measure 60: Similar to measure 33, featuring eighth notes with stems pointing up and down, and 'x' marks above the staff. The measure is divided into three measures by bar lines.

Percussion

63

Musical notation for measure 63, featuring a drum set with snare, tom, and cymbal sounds.

66

Musical notation for measure 66, featuring a drum set with snare, tom, and cymbal sounds.

69

Musical notation for measure 69, featuring a drum set with snare, tom, and cymbal sounds.

72

Musical notation for measure 72, featuring a drum set with snare, tom, and cymbal sounds.

75

Musical notation for measure 75, featuring a drum set with snare, tom, and cymbal sounds.

78

Musical notation for measure 78, featuring a drum set with snare, tom, and cymbal sounds.

81

Musical notation for measure 81, featuring a drum set with snare, tom, and cymbal sounds.

84

Musical notation for measure 84, featuring a drum set with snare, tom, and cymbal sounds.

87

Musical notation for measure 87, featuring a drum set with snare, tom, and cymbal sounds.

90

Musical notation for measure 90, featuring a drum set with snare, tom, and cymbal sounds.

V.S.

Percussion

93

Musical notation for measure 93, featuring a treble clef, a double bar line, and a series of rhythmic patterns with accents and slurs. A triplet of eighth notes is indicated at the end of the measure.

96

Musical notation for measure 96, featuring a treble clef, a double bar line, and a series of rhythmic patterns with accents and slurs. Three triplet markings are present under the eighth notes.

99

Musical notation for measure 99, featuring a treble clef, a double bar line, and a series of rhythmic patterns with accents and slurs.

102

Musical notation for measure 102, featuring a treble clef, a double bar line, and a series of rhythmic patterns with accents and slurs. Two triplet markings are present at the end of the measure.

105

Musical notation for measure 105, featuring a treble clef, a double bar line, and a series of rhythmic patterns with accents and slurs. Three triplet markings are present under the eighth notes.

108

Musical notation for measure 108, featuring a treble clef, a double bar line, and a series of rhythmic patterns with accents and slurs.

110

Musical notation for measure 110, featuring a treble clef, a double bar line, and a series of rhythmic patterns with accents and slurs. The measure concludes with a whole note chord.



Bob Marley - Is This Love  
Steel Drums

♩ = 121,000191

9

13

18

23

28

32

35

(C) 1994 Tune 1000 Corporation ;1977, Polygram International Publishing, Inc.  
(C) 1994 Tune 1000 Corporation ;1977, Polygram International Publishing, Inc.



84

3 2 3 3

89

93

97

101

105

108

# Bob Marley - Is This Love

## Bass Xylophone

♩ = 121,000191  
Back Vocal



AND Fight the Power in the Name of the Lord Jesus Christ



I wan na love



you and treat you right.



I wan na love you



ev er y day and ev er y night.



We'll be to geth er



with a roof right o verour heads.



(C) 1994 Tune 1000 Corporation ;1977, Polygram International Publishing, Inc.  
(C) 1994 Tune 1000 Corporation ;1977, Polygram International Publishing, Inc.

V.S.

## Bass Xylophone

23

of my sin gle bed.

25

We'll share the same room,

27

oh Jah pro vide the bread.

29

Is this love, is this love, is this

31

love, is this love that I'm feel in'?

33

Is this love, is this love, is this

35

love, is this love that I'm feel in'?

37

39

I wan na know, wan na

41

know, wan na know now.

43



I got to know, got to

45



know, got to know now. I,

47



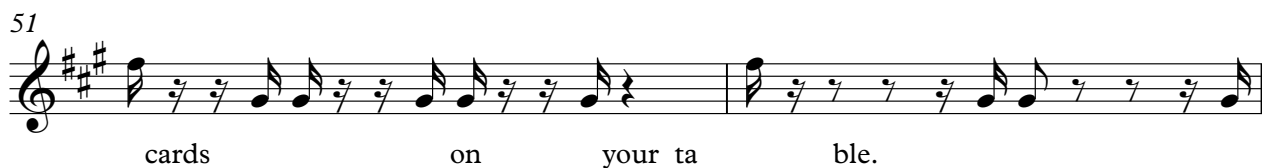
I'm will ing and a ble,

49



so I throw my

51



cards on your ta ble.

53



I wan na love you, I wan na

55



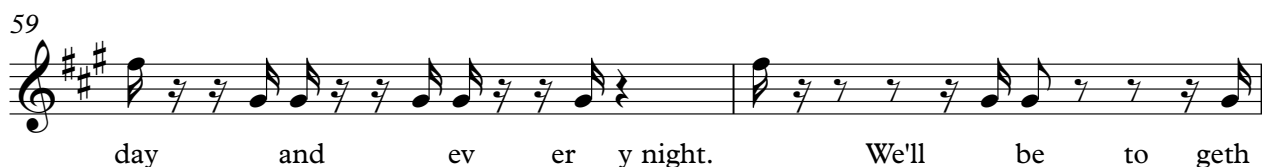
love and treat, love and treat you right.

57



I wan na love you ev er y

59



day and ev er y night. We'll be to geth

61



er with a

V.S.

63  
roof right o ver our heads. We'll share the shel

65  
ter, oh yeah,

67  
of my sin gle bed. We'll share the same

69  
room, oh

71  
Jah pro vides the bread. Is this

73  
love, is this love, is this love, is this love that I'm

75  
feel in'? Is this

77  
love, is this love, is this love, is this love that I'm

79  
feel in'? Wo- o- a- ah.

81

83



## Bass Xylophone

103



Bob Marley - Is This Love  
Jazz Guitar

♩ = 121,000191

2

6

10

14

18

22

26

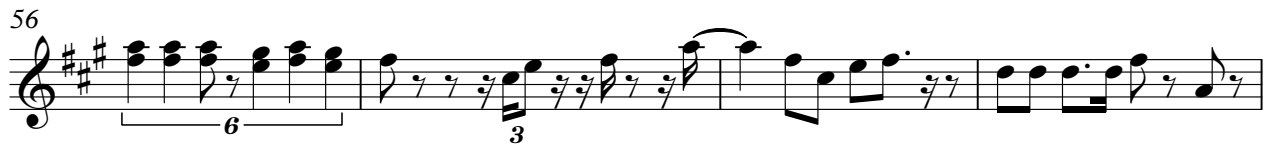
30

34

38

(C) 1994 Tune 1000 Corporation ;1977, Polygram International Publishing, Inc.  
(C) 1994 Tune 1000 Corporation ;1977, Polygram International Publishing, Inc.

V.S.



84



88



92



97



101



105



109



Bob Marley - Is This Love  
Jazz Guitar

♩ = 121,000191

2

6

10

14

18

22

26

30

36

42

(C) 1994 Tune 1000 Corporation ;1977, Polygram International Publishing, Inc.  
(C) 1994 Tune 1000 Corporation ;1977, Polygram International Publishing, Inc.

48

7

59

6

63

6

67

6

71

3

3

76

3

3

81

87

7

100

6

104

6

108



110



Bob Marley - Is This Love  
Fretless Electric Bass

♩ = 121,000191



(C) 1994 Tune 1000 Corporation ;1977, Polygram International Publishing, Inc.  
(C) 1994 Tune 1000 Corporation ;1977, Polygram International Publishing, Inc.

V.S.



42



47



51



56



60



64



68



72



76



80



84



89



93



98



102



106



109



Bob Marley - Is This Love  
Percussive Organ

♩ = 121,000191

2

6

10

14

18

22

26

30

34

38

(C) 1994 Tune 1000 Corporation ;1977, Polygram International Publishing, Inc.  
(C) 1994 Tune 1000 Corporation ;1977, Polygram International Publishing, Inc.

V.S.





Bob Marley - Is This Love  
Percussive Organ

♩ = 121,000191

2

6

10

14

18

22

26

30

34

38

(C) 1994 Tune 1000 Corporation ;1977, Polygram International Publishing, Inc.  
(C) 1994 Tune 1000 Corporation ;1977, Polygram International Publishing, Inc.

V.S.

## Percussive Organ



82

86

90

94

98

102

106

109



# Bob Marley - Is This Love

## Rock Organ

♩ = 121,000191

2

5

8

11

14

17

20

23

V.S.

(C) 1994 Tune 1000 Corporation ;1977, Polygram International Publishing, Inc.  
(C) 1994 Tune 1000 Corporation ;1977, Polygram International Publishing, Inc.

26



29



32



35



38



41



44



47



50

53

56

59

62

65

68

71

V.S.

74



77



80



83



86



89



92



95





