

I Love Lucy - I Love Lucy

11

♩ = 146,000320

Fr Horn

Trumpet

Timpani

Ac Bass

♩ = 146,000320

Brass

♩ = 146,000320

Strings

5

Fr Horn

Trumpet

Ac Bass

Brass

Strings

8

Fr Horn

Trumpet

Ac Bass

Brass

Strings

11

Fr Horn

Trumpet

Ac Bass

Brass

Strings

14

Fr Horn

Trumpet

Ac Bass

Brass

Strings

Detailed description: This system of musical notation covers measures 14, 15, and 16. It features five staves: Fr Horn (French Horn), Trumpet, Ac Bass (Acoustic Bass), Brass, and Strings. The Fr Horn and Trumpet parts are in treble clef, while Ac Bass and Strings are in bass clef. The Brass part is also in treble clef. The music is in a key with one sharp (F#) and a 4/4 time signature. Measure 14 shows rhythmic patterns with eighth and quarter notes. Measure 15 features a half note in the Fr Horn and a dotted quarter note in the Trumpet. Measure 16 continues the rhythmic patterns with eighth notes and quarter notes.

17

Fr Horn

Trumpet

Ac Bass

Brass

Strings

Detailed description: This system of musical notation covers measures 17 and 18. It features five staves: Fr Horn, Trumpet, Ac Bass, Brass, and Strings. The Fr Horn and Trumpet parts are in treble clef, while Ac Bass and Strings are in bass clef. The Brass part is also in treble clef. The music is in a key with one sharp (F#) and a 4/4 time signature. Measure 17 shows a half note in the Fr Horn and a dotted quarter note in the Trumpet. Measure 18 continues the rhythmic patterns with eighth notes and quarter notes.

19

Fr Horn

Trumpet

Ac Bass

Brass

Strings

21

Fr Horn

Trumpet

Timpani

Ac Bass

Brass

Strings

I Love Lucy - I Love Lucy

Fr Horn

♩ = 146,000320



I Love Lucy - I Love Lucy

Trumpet

♩ = 146,000320



I Love Lucy - I Love Lucy

Timpani

♩ = 146,000320

20

3

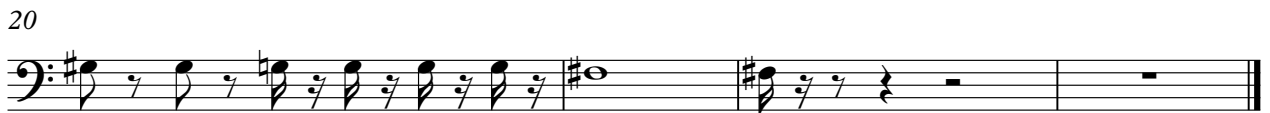
2

The image shows a musical score for a Timpani part. It consists of a single staff in bass clef with a 4/4 time signature. The score is divided into three measures. The first measure contains a whole rest, with the number '20' written above it. The second measure contains a triplet of eighth notes, with the number '3' written above the notes. The notes are G2 (marked with a sharp), A2, and B2. The third measure contains a whole rest, with the number '2' written above it. The tempo is indicated as ♩ = 146,000320.

I Love Lucy - I Love Lucy

Ac Bass

♩ = 146,000320



I Love Lucy - I Love Lucy

Brass

♩ = 146,000320

2

7

12

17

20

I Love Lucy - I Love Lucy

Strings

♩ = 146,000320

2

The first system of the string part consists of seven measures. It begins with a double bar line and a '2' above the staff, indicating a two-measure rest. The music is in 4/4 time and features a complex arrangement of notes, including eighth and sixteenth notes, and rests. The key signature has one sharp (F#).

8

The second system of the string part consists of six measures, starting with a measure rest of 8. The notation continues with various rhythmic patterns and chordal structures, maintaining the key signature of one sharp.

14

The third system of the string part consists of six measures, starting with a measure rest of 14. The notation includes a variety of note values and rests, with the key signature remaining consistent.

20

The fourth system of the string part consists of six measures, starting with a measure rest of 20. The notation features a sequence of notes with stems pointing up and down, followed by a final measure with a '2' above the staff, indicating a two-measure rest.