

Open All Hours - Open All Hours

♩ = 108,000107

The image displays a musical score for the song "Open All Hours - Open All Hours". It is organized into four systems, each containing three staves: "tune", "chords", and "bass". The score is written in bass clef with a 3/4 time signature. The tempo is indicated as ♩ = 108,000107. The first system covers measures 1-6, the second system measures 7-12, the third system measures 13-18, and the fourth system measures 19-24. The "tune" staff uses guitar tablature notation with numbers 0-7. The "chords" staff shows chord symbols and notes. The "bass" staff shows a simple bass line with notes and rests.

2

23

tune

Musical notation for the 'tune' part, written in a treble clef. It consists of a sequence of notes on a five-line staff. The notes are: G4 (quarter), A4 (quarter), B4 (quarter), C5 (quarter), B4 (quarter), A4 (quarter), G4 (quarter), and F4 (quarter). There are two slurs under the notes C5-B4 and B4-A4.

chords

Musical notation for the 'chords' part, written in a bass clef. It consists of a sequence of notes on a five-line staff. The notes are: G3 (quarter), F3 (quarter), E3 (quarter), and D3 (quarter). The final measure contains a double bar line with a slash, followed by two eighth notes: G3 and F3.

bass

Musical notation for the 'bass' part, written in a bass clef. It consists of a sequence of notes on a five-line staff. The notes are: G3 (quarter), F3 (quarter), E3 (quarter), and D3 (quarter). There are two slurs under the notes G3-F3 and E3-D3.

Open All Hours - Open All Hours

tune

♩ = 108,000107

7

8

8

15

15

21

21

chords

Open All Hours - Open All Hours

♩ = 108,000107

The first staff of music is in bass clef with a 3/4 time signature. It begins with a whole rest in the first measure. The melody consists of quarter notes: G2, A2, B2, C3, D3, E3, F3, G3. Chords are indicated by letters above the notes: E2 (under G2), F#2 (under A2), G#2 (under B2), A2 (under C3), B2 (under D3), C3 (under E3), D3 (under F3), and E3 (under G3).

9

The second staff of music is in bass clef with a 3/4 time signature. It begins with a whole rest in the first measure. The melody consists of quarter notes: G3, A3, B3, C4, D4, E4, F4, G4. Chords are indicated by letters above the notes: E3 (under G3), F#3 (under A3), G#3 (under B3), A3 (under C4), B3 (under D4), C4 (under E4), D4 (under F4), and E4 (under G4).

17

The third staff of music is in bass clef with a 3/4 time signature. It begins with a whole rest in the first measure. The melody consists of quarter notes: G4, A4, B4, C5, D5, E5, F5, G5. Chords are indicated by letters above the notes: E4 (under G4), F#4 (under A4), G#4 (under B4), A4 (under C5), B4 (under D5), C5 (under E5), D5 (under F5), and E5 (under G5).

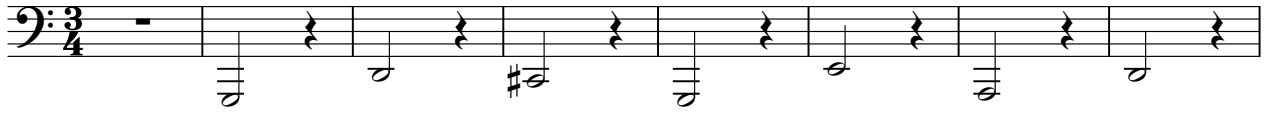
22

The fourth staff of music is in bass clef with a 3/4 time signature. It begins with a whole rest in the first measure. The melody consists of quarter notes: G5, A5, B5, C6, D6, E6, F6, G6. Chords are indicated by letters above the notes: E5 (under G5), F#5 (under A5), G#5 (under B5), A5 (under C6), B5 (under D6), C6 (under E6), D6 (under F6), and E6 (under G6). The staff ends with a double bar line.

Open All Hours - Open All Hours

bass

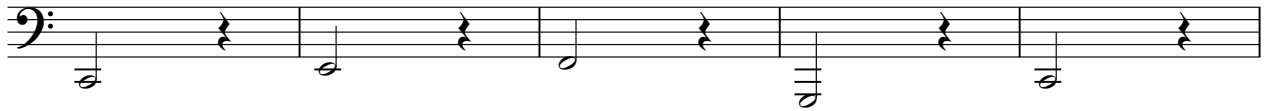
♩ = 108,000107



9



17



22

