

♩ = 238,000793

Panpipes

Baroque Trumpet

Tuba

Tuba

6

Pan.

Hn.

Bar. Tpt.

Tba.

Tba.

10

Pan.

Hn.

Bar. Tpt.

Tba.

Tba.

15

Pan.

Hn.

Bar. Tpt.

Tba.

Tba.

19

Hn.

Bar. Tpt.

Tba.

Tba.

24

Hn.
Bar. Tpt.
Tba.
Tba.

This system contains measures 24 through 28. The Horn (Hn.) and Baritone Trumpet (Bar. Tpt.) parts are in the treble clef, while the two Trombone (Tba.) parts are in the bass clef. Measures 24 and 25 feature a half-note rest in the Horn and Baritone Trumpet parts, followed by a quarter-note melody. Measures 26-28 show a more active melodic line for the Horn and Baritone Trumpet, with the Trombones providing harmonic support through chords and rhythmic patterns.

29

Hn.
Bar. Tpt.
Tba.
Tba.

This system contains measures 29 through 33. The Horn and Baritone Trumpet parts continue their melodic development, with some notes tied across measures. The Trombone parts maintain their harmonic and rhythmic accompaniment, with some chords changing in measure 31.

34

Pan.
Bar. Tpt.
Tba.
Tba.

This system contains measures 34 through 38. A Pan flute (Pan.) part is introduced in the treble clef, playing a melodic line. The Baritone Trumpet part continues its melodic role, while the Trombone parts provide harmonic support. The system concludes with a final measure in measure 38.

39

Pan.
Hn.
Bar. Tpt.
Tba.
Tba.

This system covers measures 39 to 42. The Pan flute and Baritone Trumpet parts play a melodic line with a long note in measure 40. The Horn part has a rhythmic pattern of eighth notes. The two Trombone parts play a steady bass line with chords.

43

Pan.
Bar. Tpt.
Tba.
Tba.

This system covers measures 43 to 46. The Pan flute and Baritone Trumpet parts continue their melodic line. The Horn part is absent. The Trombone parts continue their bass line.

47

Pan.
Bar. Tpt.
Tba.
Tba.

This system covers measures 47 to 50. The Pan flute and Baritone Trumpet parts play a melodic line. The Trombone parts continue their bass line. The system ends with a double bar line.

Horn in F

♩ = 238,000793

7

11

6

22

28

34

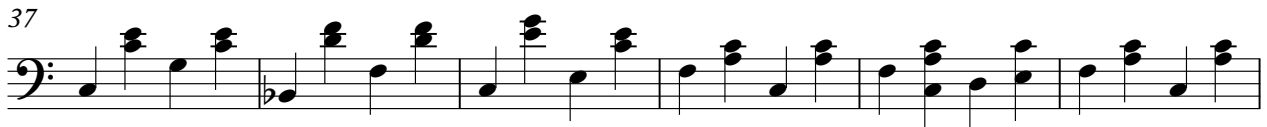
6

41

7

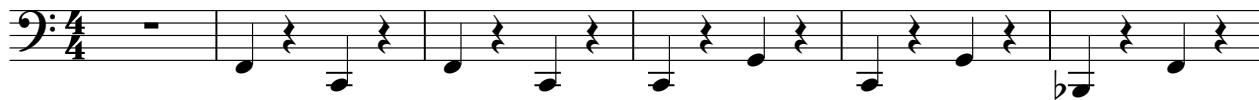
Tuba

♩ = 238,000793



Tuba

♩ = 238,000793



7



13



19



25



31



37



43



47

