

Men In Black - Men In Black

♩ = 115,000031

Drumz

Fretless

4

Drumz

Fretless

7

Drumz

Fretless

10

Beep

Drumz

Bass

Fretless

2

12

Drumz

Bass

Fretless

This system contains measures 12 and 13. The Drumz part features a complex rhythmic pattern with various note values and rests. The Bass part consists of a melodic line with eighth and sixteenth notes, including a flat sign. The Fretless part shows a series of vertical lines representing fret positions on a guitar neck.

14

Beep

Drumz

Bass

Fretless

This system contains measures 14 and 15. A new part, Beep, is introduced in the top staff, consisting of a rhythmic sequence of eighth notes. The Drumz, Bass, and Fretless parts continue from the previous system.

16

Drumz

Bass

Fretless

This system contains measures 16 and 17. The Drumz, Bass, and Fretless parts continue from the previous system.

18

Beep

Drumz

Will

Bass

Fretless

20

Drumz

Will

Bass

Fretless

22

Beep

Drumz

Will

Bass

Fretless

24

Drumz

Will

Bass

Fretless

26

Beep

Drumz

Will

Bass

Fretless

28

Drumz

Will

Bass

Fretless

30

Beep

Drumz

Will

Bass

Fretless

32

Drumz

Will

Bass

Fretless

34

Drumz

Bass

Fretless

37

Drumz

Bell2

Bell1

Bass

Fretless

40

Drumz

Bass

Fretless

43

Drumz

Bass

Fretless

46

Drumz

Bell2

Bell1

Bass

Fretless

Detailed description: This system contains measures 46, 47, and 48. The Drumz part features a complex rhythmic pattern with various note values and rests. Bell2 and Bell1 play melodic lines in the treble clef. The Bass part is in the bass clef, featuring a steady eighth-note accompaniment with some triplet figures. The Fretless part is currently empty.

49

Beep

Drumz

Will

Bass

Fretless

Detailed description: This system contains measures 49, 50, and 51. The Beep part has a simple melodic line in the treble clef. The Drumz part continues with its rhythmic pattern. The Will part has a melodic line in the treble clef. The Bass part features a more active eighth-note line with some triplet figures. The Fretless part is empty.

51

Beep

Drumz

Will

Bass

Fretless

Detailed description: This system contains measures 51 and 52. The Beep part (treble clef) has a rhythmic pattern of eighth notes with stems pointing down. Drumz (drum notation) shows a consistent pattern of snare and bass drum hits. Will (treble clef) features a sequence of chords and single notes, with a key signature change to one flat (B-flat) in measure 52. Bass (bass clef) has a complex line with triplets and sixteenth notes. Fretless (bass clef) provides a low-frequency accompaniment with chords and single notes.

53

Beep

Drumz

Will

Bass

Fretless

Detailed description: This system contains measures 53 and 54. The Beep part (treble clef) has a rhythmic pattern of eighth notes with stems pointing down. Drumz (drum notation) shows a consistent pattern of snare and bass drum hits. Will (treble clef) features a sequence of chords and single notes, with a key signature change to one flat (B-flat) in measure 54. Bass (bass clef) has a complex line with triplets and sixteenth notes. Fretless (bass clef) provides a low-frequency accompaniment with chords and single notes.

55

Beep
Drumz
Will
Bass
Fretless

Detailed description: This system of musical notation covers measures 55 and 56. The Beep part (treble clef) has a rhythmic pattern of eighth notes with stems pointing down. Drumz (drum notation) shows a consistent pattern of snare and bass drum hits. Will (treble clef) features a melodic line with a triplet of eighth notes in measure 55 and a half note in measure 56. Bass (bass clef) has a complex line with triplets and various accidentals. Fretless (bass clef) shows a melodic line with a triplet in measure 55 and a half note in measure 56.

57

Beep
Drumz
Will
Bass
Fretless

Detailed description: This system of musical notation covers measures 57 and 58. The Beep part (treble clef) has a rhythmic pattern of eighth notes with stems pointing down. Drumz (drum notation) shows a consistent pattern of snare and bass drum hits. Will (treble clef) features a melodic line with a triplet of eighth notes in measure 57 and a half note in measure 58. Bass (bass clef) has a complex line with triplets and various accidentals. Fretless (bass clef) shows a melodic line with a triplet in measure 57 and a half note in measure 58.

59

Beep
Drumz
Will
Bass
Fretless

This musical score covers measures 59 and 60. The Beep part (treble clef) plays a rhythmic pattern of eighth notes with slurs. The Drumz part (percussion clef) features a complex drum pattern with various note values and rests. The Will part (treble clef) has a melodic line with a triplet of eighth notes in measure 59 and a triplet of eighth notes in measure 60. The Bass part (bass clef) provides a bass line with eighth notes and rests. The Fretless part (bass clef) shows a melodic line with eighth notes and rests.

61

Beep
Drumz
Will
Bass
Fretless

This musical score covers measures 61 and 62. The Beep part (treble clef) is silent in measure 61 and then plays a rhythmic pattern of eighth notes with slurs in measure 62. The Drumz part (percussion clef) continues with a complex drum pattern. The Will part (treble clef) has a melodic line with a triplet of eighth notes in measure 61 and a triplet of eighth notes in measure 62. The Bass part (bass clef) provides a bass line with eighth notes and rests. The Fretless part (bass clef) shows a melodic line with eighth notes and rests.

63

Beep

Drumz

Will

Bass

Fretless

65

Drumz

Will

Bass

Fretless

67

Drumz

Bass

Fretless

69

Drumz

Bell2

Bell1

Bass

Fretless

Detailed description: This system covers measures 69 and 70. The Drumz part features a complex rhythmic pattern with various note values and rests. The Bell2 and Bell1 parts have melodic lines with some rests. The Bass part has a complex rhythmic pattern with many sixteenth notes and rests. The Fretless part is empty.

71

Drumz

Bass

Fretless

Detailed description: This system covers measures 71, 72, and 73. The Drumz part continues with its rhythmic pattern. The Bass part has a complex rhythmic pattern with many sixteenth notes and rests. The Fretless part is empty. A large oval is drawn around the Bass part in measure 73, highlighting a specific rhythmic figure.

74

Drumz

Bass

Fretless

Detailed description: This system covers measures 74, 75, and 76. The Drumz part continues with its rhythmic pattern. The Bass part has a complex rhythmic pattern with many sixteenth notes and rests. The Fretless part is empty. A large oval is drawn around the Bass part in measure 76, highlighting a specific rhythmic figure.

77

Drumz

Bell2

Bell1

Bass

Fretless

Detailed description: This system covers measures 77 to 79. The Drumz part features a complex rhythmic pattern with various note values and rests. Bell2 and Bell1 have melodic lines with some rests. The Bass part has a steady eighth-note accompaniment with some syncopation. The Fretless part is mostly empty.

80

Drumz

Bass

Fretless

Detailed description: This system covers measures 80 and 81. The Drumz part continues with its rhythmic pattern. The Bass part has a melodic line with a long note in measure 80 that is circled. The Fretless part is empty.

82

Beep

Drumz

Will

Bass

Fretless

Detailed description: This system covers measures 82 to 84. The Beep part has a rhythmic pattern of eighth notes. The Drumz part continues with its rhythmic pattern. The Will part has a melodic line with some rests. The Bass part has a steady eighth-note accompaniment. The Fretless part is empty.

84

Drumz

Will

Bass

Fretless

86

Beep

Drumz

Will

Bass

Fretless

88

Drumz

Will

Bass

Fretless

90

Beep

Drumz

Will

Bass

Fretless

92

Drumz

Will

Bass

Fretless

94

Beep

Drumz

Will

Bass

Fretless

96

Drumz

Will

Bass

Fretless

99

Drumz

Bass

102

Drumz

Bass

Men In Black - Men In Black

Beep

♩ = 115,000031

9 2

14 2

19 2

24 2 2

30 18

50 2

55 2

60 2 18

82 2

86 2

2

Beep

90

2

94

8

Men In Black - Men In Black

Drumz

♩ = 115,000031

The first staff of music shows the beginning of the drum part. It starts with a 4/4 time signature and a key signature of one flat. The first measure contains a quarter rest, followed by a quarter note G2, a quarter note A2, and a quarter note B2. The subsequent measures feature a complex rhythmic pattern with eighth and sixteenth notes, often beamed together, and various rests. The notation includes stems, beams, and note heads, with some notes marked with an 'x' to indicate a specific drum sound.

5

The second staff continues the drum part from measure 5 to 8. It maintains the same rhythmic complexity and notation style as the first staff, with various note values and rests.

9

The third staff continues the drum part from measure 9 to 12, showing a consistent rhythmic pattern.

13

The fourth staff continues the drum part from measure 13 to 16.

17

The fifth staff continues the drum part from measure 17 to 20.

21

The sixth staff continues the drum part from measure 21 to 24.

25

The seventh staff continues the drum part from measure 25 to 28.

29

The eighth staff continues the drum part from measure 29 to 32.

33

The ninth staff continues the drum part from measure 33 to 36.

37

The tenth staff continues the drum part from measure 37 to 40.

V.S.

41

45

49

53

57

61

65

69

73

77

81

Musical notation for measure 81, featuring a drum staff with a treble clef and a key signature of one flat. The notation includes eighth notes, quarter notes, and rests, with some notes marked with an 'x' to indicate a specific drum sound.

85

Musical notation for measure 85, featuring a drum staff with a treble clef and a key signature of one flat. The notation includes eighth notes, quarter notes, and rests, with some notes marked with an 'x' to indicate a specific drum sound.

89

Musical notation for measure 89, featuring a drum staff with a treble clef and a key signature of one flat. The notation includes eighth notes, quarter notes, and rests, with some notes marked with an 'x' to indicate a specific drum sound.

93

Musical notation for measure 93, featuring a drum staff with a treble clef and a key signature of one flat. The notation includes eighth notes, quarter notes, and rests, with some notes marked with an 'x' to indicate a specific drum sound.

97

Musical notation for measure 97, featuring a drum staff with a treble clef and a key signature of one flat. The notation includes eighth notes, quarter notes, and rests, with some notes marked with an 'x' to indicate a specific drum sound.

100

Musical notation for measure 100, featuring a drum staff with a treble clef and a key signature of one flat. The notation includes eighth notes, quarter notes, and rests, with some notes marked with an 'x' to indicate a specific drum sound.

Bell2

Men In Black - Men In Black

♩ = 115,000031

37 7

This musical staff is in 4/4 time. It begins with a treble clef and a 4/4 time signature. The first measure is a whole rest, with the number 37 above it. The second measure contains a quarter note G4, a quarter note A4, a quarter note B4, and a half note C5. The third measure is a whole rest, with the number 7 above it. The fourth measure contains a quarter note G4, a quarter note A4, a quarter note B4, and a half note C5.

47

23 7

This musical staff continues from the previous one. The first measure is a whole rest, with the number 23 above it. The second measure contains a quarter note G4, a quarter note A4, a quarter note B4, and a half note C5. The third measure is a whole rest, with the number 7 above it.

78

25

This musical staff continues from the previous one. The first measure contains a quarter note G4, a quarter note A4, a quarter note B4, and a half note C5. The second measure is a whole rest, with the number 25 above it. The third measure is a whole rest.

Bell1

Men In Black - Men In Black

♩ = 115,000031

37 7

47

23 7

78

25

Men In Black - Men In Black

Will

♩ = 115,000031

17

21

25

28

31

34

16

53

57

60

63

V.S.

66 **16**

85

89

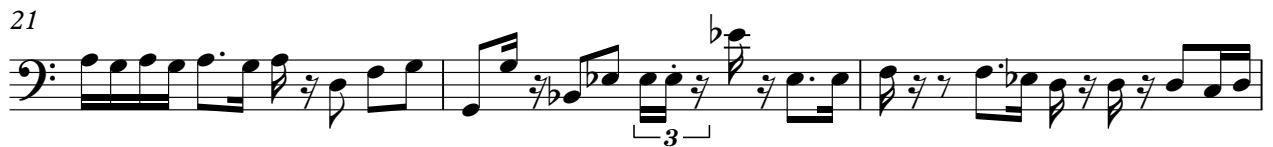
92

95 **6**

Men In Black - Men In Black

Bass

♩ = 115,000031



V.S.

39



42



45



48



51



54



57



60



63



66



69

72

75

78

81

83

86

89

92

95

4

Bass

98



102



Men In Black - Men In Black

Fretless

♩ = 115,000031

4

7

12

17

22

27

32

39

48

54

V.S.

2
59

Fretless

64

71

80

86

91

95

6