

Blackboard Jumble - Blackboard Jumble

♩ = 175,000076

Timpani

Drums

Harp

El Bass

EPiano2

SynBrass

Brass1

Strings

Piano2

♩ = 175,000076



5

Timpani

Drums

Percussion

El Bass

EPiano2

Brass1

Strings

Piano2

9

Drums

Percussion

El Bass

EPiano2

Brass1

Strings

Piano2

Detailed description: This block contains the musical score for measures 9 through 12. The score is arranged in a grand staff format with seven staves. The top staff is for Drums, showing a complex rhythmic pattern with many sixteenth notes. The Percussion staff has a simpler pattern with quarter notes. The El Bass staff features a melodic line with eighth and sixteenth notes. The EPiano2 staff has a bass line with chords and some melodic movement. The Brass1 staff has a melodic line with eighth notes. The Strings staff has a complex melodic line with many sixteenth notes and a triplet of eighth notes at the end of measure 12. The Piano2 staff has a complex melodic line with many sixteenth notes and a triplet of eighth notes at the end of measure 12.



13

Drums

Percussion

El Bass

EPiano2

Brass1

Strings

Piano2

Detailed description: This block contains the musical score for measures 13 through 16. The score is arranged in a grand staff format with seven staves. The top staff is for Drums, showing a complex rhythmic pattern with many sixteenth notes. The Percussion staff has a simpler pattern with quarter notes. The El Bass staff features a melodic line with eighth and sixteenth notes. The EPiano2 staff has a bass line with chords and some melodic movement. The Brass1 staff has a melodic line with eighth notes. The Strings staff has a complex melodic line with many sixteenth notes and four groups of sixteenth notes marked with a '6' below them. The Piano2 staff has a complex melodic line with many sixteenth notes and a triplet of eighth notes at the end of measure 16.

14

Drums

Percussion

Harp

El Bass

EPiano2

Brass1

Strings

Piano2



17

Timpani

Drums

Percussion

Harp

El Bass

EPiano2

Brass1

Strings

Piano2

19

Timpani
Drums
Percussion
Harp
El Bass
EPiano2
Brass1
Strings
Piano2

This musical score covers measures 19 and 20. It features ten staves: Timpani, Drums, Percussion, Harp, El Bass, EPiano2, Brass1, Strings, and Piano2. The Harp and Piano2 parts include sixteenth-note passages marked with a '6' (trill). The Brass1 and Strings parts have long, sweeping lines. The Drums part shows a rhythmic pattern with 'x' marks above the staff.



21

Drums
Percussion
Harp
El Bass
EPiano2
Brass1
Strings
Piano2

This musical score covers measures 21 and 22. It features the same ten staves as the previous system. The Harp part has a continuous sixteenth-note pattern with '6' markings. The Drums part has a consistent rhythmic pattern with 'x' marks. The EPiano2 part has a sustained chord with some movement. The Brass1 and Strings parts have long, sustained notes. The Piano2 part has a rhythmic pattern of chords.

23

Timpani

Drums

Percussion

Harp

El Bass

EPiano2

SynBrass

Brass1

Strings

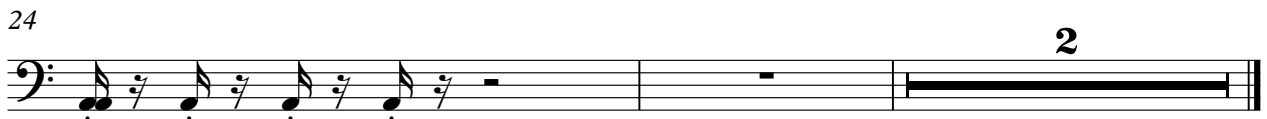
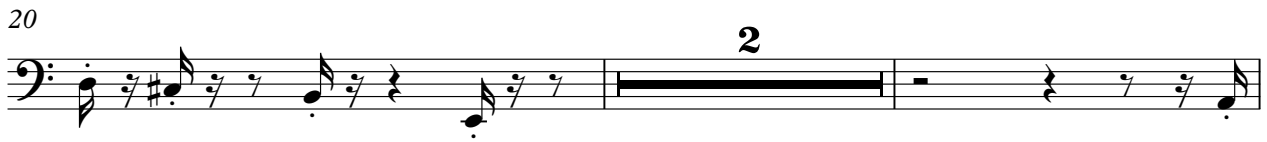
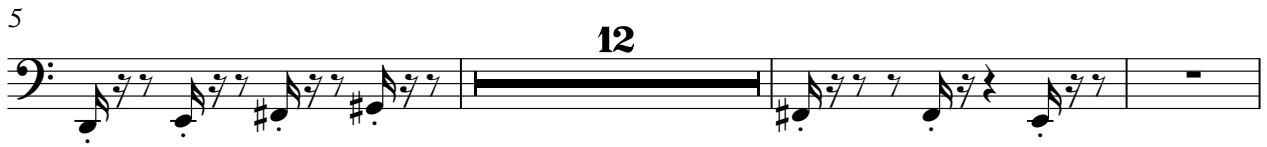
Piano2

Detailed description: This is a page of a musical score, page 5, starting at measure 23. The score is arranged in a vertical stack of staves. From top to bottom, the instruments are: Timpani (bass clef), Drums (percussion clef), Percussion (percussion clef), Harp (treble clef), El Bass (bass clef), EPiano2 (treble clef), SynBrass (treble clef), Brass1 (treble clef), Strings (bass clef), and Piano2 (treble clef). The Harp part features sixteenth-note runs with triplets and sixteenth-note groupings. The Drums part includes a pattern of 'x' marks above the staff, indicating cymbal hits. The Percussion part has a steady eighth-note pattern. The El Bass part has a simple melodic line. The EPiano2 and Piano2 parts play chords and moving lines. The SynBrass part has a few chords. The Brass1 part has a melodic line with some slurs. The Strings part has a melodic line with some slurs. The Timpani part has a few notes. The page ends with a double bar line.

Blackboard Jumble - Blackboard Jumble

Timpani

♩ = 175,000076



Blackboard Jumble - Blackboard Jumble

Drums

♩ = 175,000076

Musical notation for the first staff of the drum part, measures 1-5. The staff is in 4/4 time. Measure 1 is a whole rest. Measures 2-5 contain a sequence of notes and rests: measure 2 has four eighth notes (x, x, x, x); measure 3 has a quarter note, a quarter note, and a quarter note; measure 4 has a quarter note, a quarter note, and a quarter note; measure 5 has a quarter note, a quarter note, and a quarter note.

Musical notation for the second staff of the drum part, measures 6-9. The staff is in 4/4 time. Measures 6-9 contain a sequence of notes and rests: measure 6 has a quarter note, a quarter note, and a quarter note; measure 7 has a quarter note, a quarter note, and a quarter note; measure 8 has a quarter note, a quarter note, and a quarter note; measure 9 has a quarter note, a quarter note, and a quarter note.

Musical notation for the third staff of the drum part, measures 10-13. The staff is in 4/4 time. Measures 10-13 contain a sequence of notes and rests: measure 10 has a quarter note, a quarter note, and a quarter note; measure 11 has a quarter note, a quarter note, and a quarter note; measure 12 has a quarter note, a quarter note, and a quarter note; measure 13 has a quarter note, a quarter note, and a quarter note.

Musical notation for the fourth staff of the drum part, measures 14-17. The staff is in 4/4 time. Measures 14-17 contain a sequence of notes and rests: measure 14 has a quarter note, a quarter note, and a quarter note; measure 15 has a quarter note, a quarter note, and a quarter note; measure 16 has a quarter note, a quarter note, and a quarter note; measure 17 has a quarter note, a quarter note, and a quarter note.

Musical notation for the fifth staff of the drum part, measures 18-21. The staff is in 4/4 time. Measures 18-21 contain a sequence of notes and rests: measure 18 has a quarter note, a quarter note, and a quarter note; measure 19 has a quarter note, a quarter note, and a quarter note; measure 20 has a quarter note, a quarter note, and a quarter note; measure 21 has a quarter note, a quarter note, and a quarter note.

Musical notation for the sixth staff of the drum part, measures 22-25. The staff is in 4/4 time. Measures 22-25 contain a sequence of notes and rests: measure 22 has a quarter note, a quarter note, and a quarter note; measure 23 has a quarter note, a quarter note, and a quarter note; measure 24 has a quarter note, a quarter note, and a quarter note; measure 25 has a quarter note, a quarter note, and a quarter note.

Percussion

Blackboard Jumble - Blackboard Jumble

♩ = 175,000076

4

10

15

19

22

2

Blackboard Jumble - Blackboard Jumble

Harp

$\text{♩} = 175,000076$

13

15

17

19

21

22

23

Blackboard Jumble - Blackboard Jumble

EPiano2

♩ = 175,000076

5

5

10

15

19

23

2

Blackboard Jumble - Blackboard Jumble

SynBrass

♩ = 175,000076

2

The first staff of music is in 4/4 time. It begins with a whole rest for two measures, indicated by a '2' above the staff. The melody starts in the third measure with a quarter note G#4, followed by a quarter note A4, a quarter note B4, and a quarter note C5. The fourth measure contains a quarter note B4, a quarter note A4, and a quarter note G#4. The fifth measure features a half note G#4 with a slur over it, followed by a quarter rest. The sixth measure consists of a quarter rest.

5

19

2

The second staff of music is in 4/4 time. It begins with a whole rest for two measures, indicated by a '2' above the staff. The melody starts in the third measure with a quarter note G#4, followed by a quarter note A4, a quarter note B4, and a quarter note C5. The fourth measure contains a quarter note B4, a quarter note A4, and a quarter note G#4. The fifth measure features a half note G#4 with a slur over it, followed by a quarter rest. The sixth measure consists of a quarter rest.

Blackboard Jumble - Blackboard Jumble

Brass1

♩ = 175,000076

2

7

10

14

17

20

23

2

Blackboard Jumble - Blackboard Jumble

Strings

♩ = 175,000076

2

7

12

13

6

6

6

6

14

20

24

2

Blackboard Jumble - Blackboard Jumble

Piano2

♩ = 175,000076

2

6

9

12

15

18

22

24

2

Detailed description: This is a piano score for the piece 'Blackboard Jumble'. It is written in 4/4 time with a tempo of 175,000076. The score consists of eight staves of music. The first staff begins with a double bar line and a '2' above it, indicating a second ending. The music is primarily composed of chords and short melodic fragments. The key signature changes from one sharp (F#) to one flat (Bb) between the second and third staves. The piece concludes with a final double bar line and a '2' above it, suggesting a second ending or a specific performance instruction.