

Foo Fighters - Down In The Park

♩ = 140,000137

Drums

Digital Delay

Pick Bass

Reverse Symbol

5

Drums

Digital Delay

Pick Bass

8

Drums

Digital Delay

Pick Bass

10

Drums

Digital Delay

Pick Bass

12

Drums

Digital Delay

Pick Bass

22

Vocals

Drums

Digital Delay

Pick Bass

25

Vocals

Drums

Digital Delay

Pick Bass

28

Vocals

Drums

Digital Delay

Pick Bass

34

Drums

Digital Delay

Distortion w/ Flange

Distortion

Pick Bass

Detailed description: This system covers measures 34, 35, and 36. The Drums track shows a consistent pattern of quarter notes on the snare and bass drum. The Digital Delay track is mostly silent, with a few notes in measure 34. The Distortion w/ Flange track features a melodic line starting in measure 35. The Distortion track has sustained chords in measures 35 and 36. The Pick Bass track provides a steady bass line throughout.

37

Drums

Distortion w/ Flange

Distortion

Pick Bass

Detailed description: This system covers measures 37, 38, and 39. The Drums track continues with a steady quarter-note pattern. The Distortion w/ Flange track has a melodic line that changes in measure 38. The Distortion track has sustained chords in measures 38 and 39. The Pick Bass track continues with a steady bass line.

40

Drums

Distortion w/ Flange

Distortion

Pick Bass

43

Drums

Digital Delay

Distortion

Pick Bass

48

Drums

Digital Delay

Distortion

Pick Bass

51

Vocals

Drums

Digital Delay

Distortion

Pick Bass

Detailed description: This system contains measures 51 and 52. The Vocals staff shows a whole rest in measure 51 and a melodic line in measure 52. The Drums staff features a pattern of eighth notes with 'x' marks above them, indicating a specific drum sound. The Digital Delay staff has a long, curved line spanning both measures. The Distortion staff plays a rhythmic pattern of eighth notes with a slash through them. The Pick Bass staff plays a steady eighth-note bass line.

52

Vocals

Drums

Digital Delay

Distortion

Pick Bass

Detailed description: This system continues measures 51 and 52. The Vocals staff has a melodic line in measure 51 and a more complex line in measure 52. The Drums staff continues the eighth-note pattern with 'x' marks. The Digital Delay staff remains empty. The Distortion staff continues the eighth-note rhythmic pattern. The Pick Bass staff continues the eighth-note bass line.

53

Vocals

Drums

Distortion

Pick Bass

54

Vocals

Drums

Distortion

Pick Bass

55

Vocals

Drums

Distortion

Pick Bass

56

Vocals

Drums

Distortion

Pick Bass

56

57

Vocals

Drums

Distortion

Pick Bass

57

58

Drums

Digital Delay

Distortion

Pick Bass

58

59

Vocals

Drums

Digital Delay

Distortion

Pick Bass

60

Vocals

Drums

Distortion

Pick Bass

61

Vocals

Drums

Distortion

Pick Bass

Detailed description: This system covers measures 61 and 62. The Vocals staff (treble clef) shows a melody starting on a whole note, followed by a half note, and then a quarter note. The Drums staff (percussion clef) features a consistent pattern of eighth notes with 'x' marks, indicating a specific drum sound. The Distortion staff (treble clef) contains a series of eighth-note chords with a slash through the stem, suggesting a distorted or muted sound. The Pick Bass staff (bass clef) plays a steady eighth-note bass line.

62

Vocals

Drums

Distortion

Pick Bass

Detailed description: This system covers measures 63 and 64. The Vocals staff (treble clef) continues the melody with a half note, a quarter note, and a quarter note with a sharp sign. The Drums staff (percussion clef) maintains the eighth-note pattern with 'x' marks. The Distortion staff (treble clef) continues with eighth-note chords with a slash through the stem. The Pick Bass staff (bass clef) continues the eighth-note bass line.

63

Vocals

Drums

Distortion

Pick Bass

Detailed description: This system covers measures 65 and 66. The Vocals staff (treble clef) has a whole rest in measure 65, followed by a quarter note in measure 66. The Drums staff (percussion clef) continues the eighth-note pattern with 'x' marks. The Distortion staff (treble clef) continues with eighth-note chords with a slash through the stem. The Pick Bass staff (bass clef) continues the eighth-note bass line.

64

Vocals

Drums

Distortion

Pick Bass

65

Vocals

Drums

Distortion

Pick Bass

66

Drums

Distortion w/ Flange

Distortion

Pick Bass

68

Drums

Distortion w/ Flange

Distortion

Pick Bass

71

Drums

Distortion w/ Flange

Distortion

Pick Bass

74

Drums

Digital Delay

Distortion w/ Flange

Distortion

Pick Bass

Detailed description: This system covers measures 74 to 77. The Drums track shows a pattern of eighth notes in the first two measures, followed by quarter notes in the last two. The Digital Delay track has rests in measures 74 and 75, then a sequence of notes (F#4, G4, A4, G4, F#4) in measures 76 and 77. The Distortion w/ Flange track features a sixteenth-note run in measure 74, followed by rests. The Distortion track has a sustained chord of F#4, G4, and A4 in measures 76 and 77. The Pick Bass track plays eighth notes in measure 74, then sustained notes in measures 76 and 77.

78

Drums

Digital Delay

Distortion

Pick Bass

Detailed description: This system covers measures 78 to 81. The Drums track has quarter notes in measures 78 and 80, and eighth notes in measures 79 and 81. The Digital Delay track continues the sequence from the previous system (F#4, G4, A4, G4, F#4) across all four measures. The Distortion track has a sustained chord of F#4, G4, and A4 in measures 79 and 80. The Pick Bass track has a sustained note in measure 78, and sustained notes in measures 80 and 81.

81

Drums

Digital Delay

Distortion w/ Flange

Distortion

Pick Bass

82

Drums

Digital Delay

Distortion w/ Flange

Distortion

Pick Bass

84

Drums

Digital Delay

Distortion w/ Flange

Distortion

Pick Bass

87

Drums

Digital Delay

Distortion w/ Flange

Distortion

Pick Bass

90

Drums

Digital Delay

Distortion w/ Flange

Distortion

Pick Bass

92

Drums

Digital Delay

Distortion w/ Flange

Distortion

Pick Bass

95 * * * * * * * * * * * *

Drums

Digital Delay

Distortion w/ Flange

Distortion

Pick Bass

98

Vocals

Drums

Digital Delay

Distortion w/ Flange

Distortion

Pick Bass

100

Vocals

Drums

Digital Delay

Distortion w/ Flange

Distortion

Pick Bass

103

Vocals

Drums

Digital Delay

Distortion w/ Flange

Distortion

Pick Bass

106

Vocals

Drums

Digital Delay

Distortion w/ Flange

Distortion

Pick Bass

108

Vocals

Drums

Distortion w/ Flange

Distortion

Pick Bass

111

Vocals

Drums

Distortion w/ Flange

Distortion

Pick Bass

113

Vocals

Drums

Distortion w/ Flange

Distortion

Pick Bass

115

Drums

Distortion w/ Flange

Distortion

Pick Bass

118

Drums

Distortion w/ Flange

Distortion

Pick Bass

121

Drums

Distortion w/ Flange

Distortion

Pick Bass

124

Drums

Distortion w/ Flange

Distortion

Pick Bass

127

Drums

Distortion w/ Flange

Distortion

Pick Bass

130

Drums

Distortion w/ Flange

Distortion

Pick Bass

133

Drums

Distortion w/ Flange

Distortion

Pick Bass

136

Drums

Distortion w/ Flange

Distortion

Pick Bass

139

Drums

Distortion w/ Flange

Distortion

Pick Bass

141

Drums

Distortion w/ Flange

Distortion

Pick Bass

Foo Fighters - Down In The Park

Vocals

♩ = 140,000137

18

22

28

33

54

59

64

100

105

111

29

Foo Fighters - Down In The Park

Drums

♩ = 140,000137
2

6
10
14
18
22
26
30
34
39

V.S.

Drums

45

50

54

58

62

66

71

77

82

86

Drums

The image displays a musical score for a drum part, consisting of ten systems of notation. Each system includes a measure number on the left and a staff with rhythmic notation. Above each staff, there are asterisks (*) indicating specific drum sounds. The notation is as follows:

- Measures 90-110:** Each system shows a sequence of rhythmic patterns. The asterisks are placed above the first four notes of each measure, indicating a consistent drum sound.
- Measures 114-129:** These systems show more complex rhythmic patterns. The asterisks are placed above the first four notes of each measure, but the drum sounds vary, with some measures showing a change in the pattern.

V.S.

4

Drums

134

Musical notation for drums, measures 134-138. The notation consists of two staves. The top staff uses a treble clef and contains five measures of music with various rhythmic values and accidentals. The bottom staff uses a bass clef and contains five measures of music with various rhythmic values and accidentals. The notation is complex, featuring many accidentals and rhythmic markings.

139

Musical notation for drums, measures 139-143. The notation consists of two staves. The top staff uses a treble clef and contains five measures of music with various rhythmic values and accidentals. The bottom staff uses a bass clef and contains five measures of music with various rhythmic values and accidentals. The notation is complex, featuring many accidentals and rhythmic markings.

Digital Delay

Foo Fighters - Down In The Park

♩ = 140,000137

2

6

9

12

17

21

26

31

9

44

49

5

Distortion w/ Flange

Foo Fighters - Down In The Park

♩ = 140,000137

34

38

42

24

69

73

5

81

83

87

91

95

V.S.

99

103

107

111

115

119

123

127

131

135

Foo Fighters - Down In The Park

Distortion

♩ = 140,000137

34

41

50

53

55

57

59

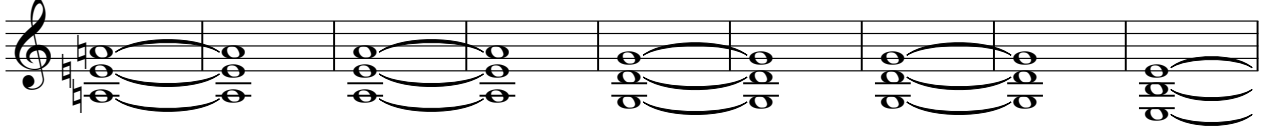
61

63

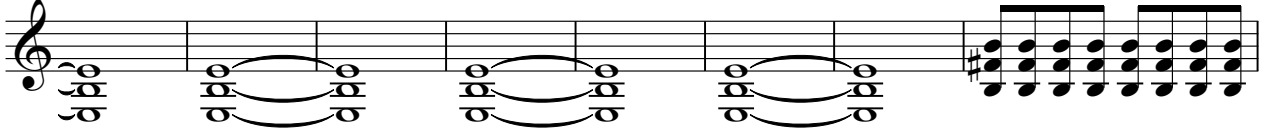
65

V.S.

67



76



84



88



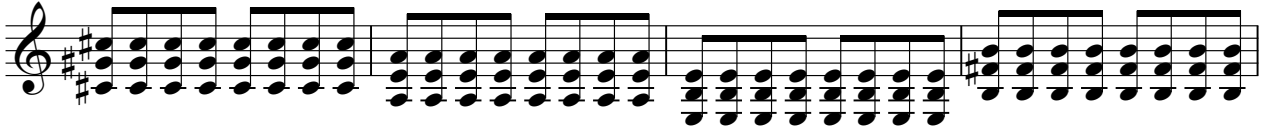
92



96



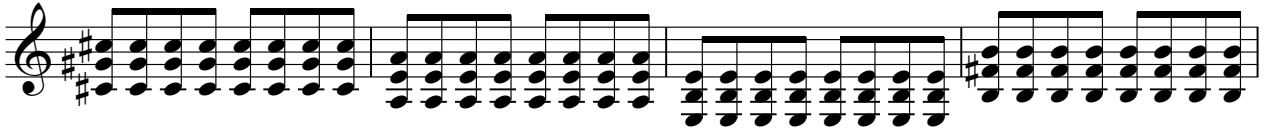
100



104



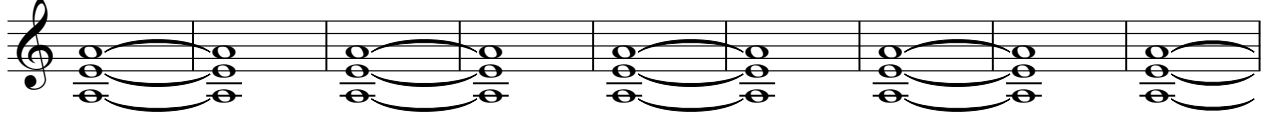
108



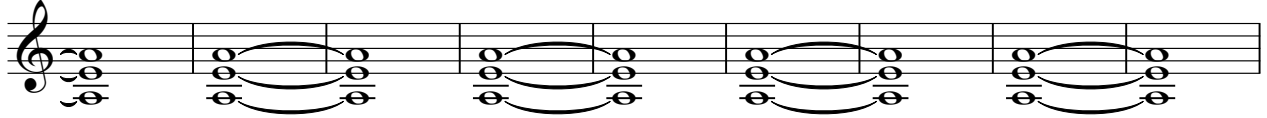
112



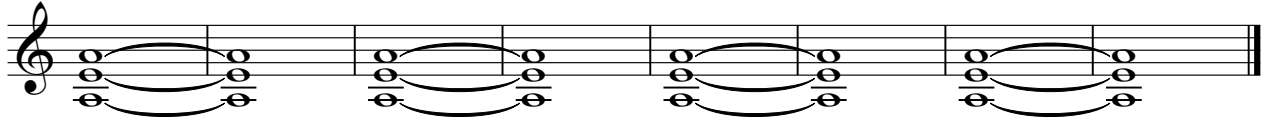
117



126



135



45



51



55



59



63



67



72



79



84



88



92



4

Pick Bass

136



140



Reverse Symbal

Foo Fighters - Down In The Park

♩ = 140,000137

140

4/4