

Bush - Glycerine

♩ = 125,000000

WinJammer Demo

WinJammer Demo

♩ = 125,000000

WinJammer Demo

WinJammer Demo

5

WinJammer Demo

WinJammer Demo

8

WinJammer Demo

WinJammer Demo

11

WinJammer Demo

WinJammer Demo

14

WinJammer Demo

WinJammer Demo

WinJammer Demo

17

WinJammer Demo

WinJammer Demo

WinJammer Demo

20

WinJammer Demo

WinJammer Demo

WinJammer Demo

23

WinJammer Demo

WinJammer Demo

WinJammer Demo

WinJammer Demo

26

WinJammer Demo

WinJammer Demo

WinJammer Demo

WinJammer Demo

WinJammer Demo

29

WinJammer Demo

WinJammer Demo

WinJammer Demo

WinJammer Demo

WinJammer Demo

32

WinJammer Demo

WinJammer Demo

WinJammer Demo

35

WinJammer Demo

WinJammer Demo

WinJammer Demo

38

WinJammer Demo

WinJammer Demo

WinJammer Demo

41

WinJammer Demo

WinJammer Demo

WinJammer Demo

44

WinJammer Demo

WinJammer Demo

WinJammer Demo

WinJammer Demo

47

WinJammer Demo

WinJammer Demo

WinJammer Demo

WinJammer Demo

WinJammer Demo

50

WinJammer Demo

WinJammer Demo

WinJammer Demo

WinJammer Demo

WinJammer Demo

53

WinJammer Demo

WinJammer Demo

WinJammer Demo

WinJammer Demo

56

WinJammer Demo

WinJammer Demo

WinJammer Demo

WinJammer Demo

WinJammer Demo

59

WinJammer Demo

WinJammer Demo

WinJammer Demo

WinJammer Demo

WinJammer Demo

62

WinJammer Demo

WinJammer Demo

WinJammer Demo

WinJammer Demo

WinJammer Demo

WinJammer Demo

WinJammer Demo

65

WinJammer Demo

WinJammer Demo

WinJammer Demo

WinJammer Demo

WinJammer Demo

WinJammer Demo

WinJammer Demo

68

WinJammer Demo

WinJammer Demo

WinJammer Demo

WinJammer Demo

WinJammer Demo

WinJammer Demo

WinJammer Demo

71

WinJammer Demo

WinJammer Demo

WinJammer Demo

WinJammer Demo

74

WinJammer Demo

WinJammer Demo

WinJammer Demo

WinJammer Demo

WinJammer Demo

77

WinJammer Demo

WinJammer Demo

WinJammer Demo

WinJammer Demo

WinJammer Demo

80

WinJammer Demo

WinJammer Demo

WinJammer Demo

WinJammer Demo

83

WinJammer Demo

WinJammer Demo

WinJammer Demo

WinJammer Demo

WinJammer Demo

86

WinJammer Demo

WinJammer Demo

WinJammer Demo

WinJammer Demo

WinJammer Demo

89

WinJammer Demo

WinJammer Demo

WinJammer Demo

WinJammer Demo

WinJammer Demo

92

WinJammer Demo

WinJammer Demo

WinJammer Demo

WinJammer Demo

WinJammer Demo

95

WinJammer Demo

WinJammer Demo

WinJammer Demo

WinJammer Demo

WinJammer Demo

98

WinJammer Demo

WinJammer Demo

WinJammer Demo

WinJammer Demo

101

WinJammer Demo

WinJammer Demo

WinJammer Demo

WinJammer Demo

104

WinJammer Demo

WinJammer Demo

WinJammer Demo

WinJammer Demo

107

WinJammer Demo

WinJammer Demo

WinJammer Demo

WinJammer Demo

WinJammer Demo

110

WinJammer Demo

WinJammer Demo

WinJammer Demo

WinJammer Demo

WinJammer Demo

♩ = 90,000092

113

WinJammer Demo

WinJammer Demo

♩ = 90,000092

WinJammer Demo

WinJammer Demo

117

WinJammer Demo

WinJammer Demo

♩ = 125,000000

11

15

20

24

29

35

40

44

49

55

V.S.

♩ = 125,000000

3

7

11

15

19

23

27

31

35

39

V.S.

This page contains ten systems of musical notation, each starting with a measure number: 43, 47, 51, 55, 59, 63, 67, 71, 75, and 79. Each system consists of a single staff in treble clef with a key signature of one flat (B-flat). The notation is a complex, rhythmic accompaniment featuring a mix of eighth and sixteenth notes, often beamed together in groups. There are frequent ties between notes and rests, and the overall texture is dense and repetitive, characteristic of a jammer or instrumental piece. The notation is presented in a clean, black-and-white format.

83

6

92

96

100

104

108

112

♩ = 90,000092

6

♩ = 125,000000

3

8

14

21

28

34

40

47

54

61

V.S.

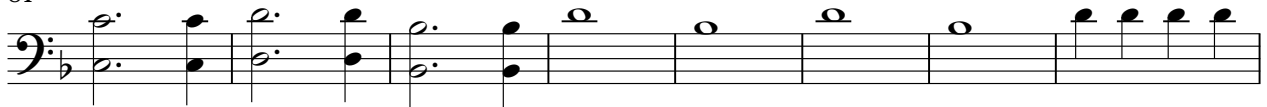
67



74



81



89



96



103



109



113



♩ = 125,000000

20

26

33

65

20

88

94

16

115

♩ = 90,000092

16

♩ = 125,000000

27

32

13

51

59

67

75

83

90

7

103

109

2

WinJammer Demo

115 ♩ = 90,000092

Musical notation for a single measure in 3/4 time. The key signature has one flat (B-flat). The notation consists of a single staff with a treble clef and a key signature of one flat. The notes are: quarter note G4, quarter note A4, quarter note Bb4, quarter note Bb4, quarter note Bb4, quarter note Bb4, quarter note A4, quarter note G4, quarter note G4, quarter note G4, quarter note G4. A slur covers the last four notes (Bb4, Bb4, Bb4, G4). The measure ends with a double bar line.