

Cars - Shake It Up

♩ = 130,000137 ♩ = 130,000137 ♩ = 130,000137

Rhythm&SE

Bass

Guitar

♩ = 130,000137 ♩ = 130,000137 ♩ = 130,000137

Chords

Vocal

♩ = 130,000137 ♩ = 130,000137 ♩ = 130,000137

4

Bass

Guitar

♩ = 130,000137 ♩ = 130,000137 ♩ = 130,000137

Chords

Vocal

2

7 $\text{♩} = 130,000137$ $\text{♩} = 130,000137$ $\text{♩} = 130,000137$

Rhythm&SE

Bass

Guitar

Chords $\text{♩} = 130,000137$ $\text{♩} = 130,000137$ $\text{♩} = 130,000137$

Vocal

10 $\text{♩} = 130,000137$ $\text{♩} = 130,000137$ $\text{♩} = 130,000137$

Rhythm&SE

Bass

Guitar

Chords $\text{♩} = 130,000137$ $\text{♩} = 130,000137$ $\text{♩} = 130,000137$

Vocal

13 $\text{♩} = 130,000137$ $\text{♩} = 130,000137$ $\text{♩} = 130,000137$ 3

Rhythm&SE

Bass

Guitar

Chords

Vocal

16 $\text{♩} = 130,000137$ $\text{♩} = 130,000137$ $\text{♩} = 130,000137$

Rhythm&SE

Bass

Guitar

Chords

Vocal

19 $\text{♩} = 130,000137$ $\text{♩} = 130,000137$ $\text{♩} = 130,000137$

Rhythm&SE

Bass

Guitar

Chords $\text{♩} = 130,000137$ $\text{♩} = 130,000137$ $\text{♩} = 130,000137$

Vocal

22 $\text{♩} = 130,000137$ $\text{♩} = 130,000137$ $\text{♩} = 130,000137$

Rhythm&SE

Bass

Guitar

Chords $\text{♩} = 130,000137$ $\text{♩} = 130,000137$ $\text{♩} = 130,000137$

Vocal

25 $\text{♩} = 130,000137$ $\text{♩} = 130,000137$ $\text{♩} = 130,000137$ 5

Rhythm&SE

Bass

Guitar

Chords $\text{♩} = 130,000137$ $\text{♩} = 130,000137$ $\text{♩} = 130,000137$

Vocal

28 $\text{♩} = 130,000137$ $\text{♩} = 130,000137$ $\text{♩} = 130,000137$

Rhythm&SE

Bass

Guitar

Chords $\text{♩} = 130,000137$ $\text{♩} = 130,000137$ $\text{♩} = 130,000137$

Vocal

31 $\text{♩} = 130,000137$ $\text{♩} = 130,000137$ $\text{♩} = 130,000137$

Rhythm&SE

Bass

Guitar

Chords $\text{♩} = 130,000137$ $\text{♩} = 130,000137$ $\text{♩} = 130,000137$

Vocal

34 $\text{♩} = 130,000137$ $\text{♩} = 130,000137$ $\text{♩} = 130,000137$

Rhythm&SE

Bass

Guitar

Chords $\text{♩} = 130,000137$ $\text{♩} = 130,000137$ $\text{♩} = 130,000137$

Vocal

37 $\text{♩} = 130,000137$ $\text{♩} = 130,000137$ 7

Rhythm&SE

Bass

Guitar

Chords $\text{♩} = 130,000137$ $\text{♩} = 130,000137$

Vocal

39 $\text{♩} = 130,000137$ $\text{♩} = 130,000137$ $\text{♩} = 130,000137$

Rhythm&SE

Bass

Guitar

Chords $\text{♩} = 130,000137$ $\text{♩} = 130,000137$ $\text{♩} = 130,000137$

Vocal

42 $\downarrow = 130,000137$ $\downarrow = 130,000137$ $\downarrow = 130,000137$

Rhythm&SE

Bass

Guitar

Chords

Vocal

45 $\downarrow = 130,000137$ $\downarrow = 130,000137$ $\downarrow = 130,000137$

Rhythm&SE

Bass

Guitar

Chords

Vocal

48 $\text{♩} = 130,000137$ $\text{♩} = 130,000137$ $\text{♩} = 130,000137$ 9

Rhythm&SE

Bass

Guitar

Chords

Vocal

51 $\text{♩} = 130,000137$ $\text{♩} = 130,000137$ $\text{♩} = 130,000137$

Rhythm&SE

Bass

Guitar

Chords

Vocal

10

54

Rhythm&SE

Bass

Guitar

Chords

Vocal

57

Rhythm&SE

Bass

Guitar

Chords

Vocal

59 $\text{♩} = 130,000137$ $\text{♩} = 130,000137$ $\text{♩} = 130,000137$ 11

Rhythm&SE

Bass

Guitar

Chords $\text{♩} = 130,000137$ $\text{♩} = 130,000137$ $\text{♩} = 130,000137$

Vocal

62 $\text{♩} = 130,000137$ $\text{♩} = 130,000137$ $\text{♩} = 130,000137$

Rhythm&SE

Bass

Guitar

Chords $\text{♩} = 130,000137$ $\text{♩} = 130,000137$ $\text{♩} = 130,000137$

Vocal

12

65 $\text{♩} = 130,000137$ $\text{♩} = 130,000137$ $\text{♩} = 130,000137$

Rhythm&SE

Bass

Guitar

Chords

Vocal

68 $\text{♩} = 130,000137$ $\text{♩} = 130,000137$ $\text{♩} = 130,000137$

Rhythm&SE

Bass

Guitar

Chords

Vocal

71 $\text{♩} = 130,000137$ $\text{♩} = 130,000137$ $\text{♩} = 130,000137$ 13

Rhythm&SE

Bass

Guitar

Chords $\text{♩} = 130,000137$ $\text{♩} = 130,000137$ $\text{♩} = 130,000137$

Vocal

74 $\text{♩} = 130,000137$ $\text{♩} = 130,000137$ $\text{♩} = 130,000137$

Rhythm&SE

Bass

Guitar

Chords $\text{♩} = 130,000137$ $\text{♩} = 130,000137$ $\text{♩} = 130,000137$

Vocal

77 $\text{♩} = 130,000137$ $\text{♩} = 130,000137$ $\text{♩} = 130,000137$

Rhythm&SE

Bass

Guitar

Chords $\text{♩} = 130,000137$ $\text{♩} = 130,000137$ $\text{♩} = 130,000137$

Vocal

80 $\text{♩} = 130,000137$ $\text{♩} = 130,000137$

Rhythm&SE

Bass

Guitar

Chords $\text{♩} = 130,000137$ $\text{♩} = 130,000137$

Vocal

82 $\text{♩} = 130,000137$ $\text{♩} = 130,000137$ $\text{♩} = 130,000137$ 15

Rhythm&SE

Bass

Guitar

Chords $\text{♩} = 130,000137$ $\text{♩} = 130,000137$ $\text{♩} = 130,000137$

Vocal

85 $\text{♩} = 130,000137$ $\text{♩} = 130,000137$

Rhythm&SE

Bass

Guitar

Chords $\text{♩} = 130,000137$ $\text{♩} = 130,000137$

Vocal

87 $\text{♩} = 130,000137$ $\text{♩} = 130,000137$ $\text{♩} = 130,000137$

Rhythm&SE

Bass

Guitar

Chords $\text{♩} = 130,000137$ $\text{♩} = 130,000137$ $\text{♩} = 130,000137$

Vocal

90 $\text{♩} = 130,000137$ $\text{♩} = 130,000137$ $\text{♩} = 130,000137$

Rhythm&SE

Bass

Guitar

Chords $\text{♩} = 130,000137$ $\text{♩} = 130,000137$ $\text{♩} = 130,000137$

Vocal

93 $\text{♩} = 130,000137$ $\text{♩} = 130,000137$ 17

Rhythm&SE

Bass

Guitar

Chords $\text{♩} = 130,000137$ $\text{♩} = 130,000137$

Vocal

95 $\text{♩} = 130,000137$ $\text{♩} = 130,000137$ $\text{♩} = 130,000137$

Rhythm&SE

Bass

Guitar

Chords $\text{♩} = 130,000137$ $\text{♩} = 130,000137$ $\text{♩} = 130,000137$

Vocal

18

98

Rhythm&SE

Bass

Guitar

Chords

Vocal

101

Rhythm&SE

Bass

Guitar

Chords

Vocal

103 $\text{♩} = 130,000137$ $\text{♩} = 130,000137$ $\text{♩} = 130,000137$ ¹⁹

Rhythm&SE

Bass

Guitar

Chords $\text{♩} = 130,000137$ $\text{♩} = 130,000137$ $\text{♩} = 130,000137$

Vocal

Cars - Shake It Up

Rhythm&SE

The image displays a musical score for the song "Shake It Up" from the movie "Cars". The score is written for a guitar and is organized into ten systems, each representing four measures. The time signature is 4/4. Above each system, there are rhythmic notations: a quarter note followed by "130,000137", a quarter note followed by "130,000137", a quarter note followed by "130,000137", and a quarter note followed by "130,000137". The notation includes a treble clef, a key signature of one sharp (F#), and a common time signature of 4/4. The music consists of a series of eighth and sixteenth notes, with some measures featuring a double bar line and a repeat sign. The score is numbered 7, 11, 15, 19, 23, 27, 31, 35, and 39 at the beginning of each system. The notation includes a treble clef, a key signature of one sharp (F#), and a common time signature of 4/4. The music consists of a series of eighth and sixteenth notes, with some measures featuring a double bar line and a repeat sign.

V.S.

2

Rhythm & SE

43 $\text{♩} = 130,000137$ $\text{♩} = 130,000137$ $\text{♩} = 130,000137$ $\text{♩} = 130,000137$

47 $\text{♩} = 130,000137$ $\text{♩} = 130,000137$ $\text{♩} = 130,000137$ $\text{♩} = 130,000137$

51 $\text{♩} = 130,000137$ $\text{♩} = 130,000137$ $\text{♩} = 130,000137$ $\text{♩} = 130,000137$

55 $\text{♩} = 130,000137$ $\text{♩} = 130,000137$ $\text{♩} = 130,000137$ $\text{♩} = 130,000137$

59 $\text{♩} = 130,000137$ $\text{♩} = 130,000137$ $\text{♩} = 130,000137$ $\text{♩} = 130,000137$

63 $\text{♩} = 130,000137$ $\text{♩} = 130,000137$ $\text{♩} = 130,000137$ $\text{♩} = 130,000137$

67 $\text{♩} = 130,000137$ $\text{♩} = 130,000137$ $\text{♩} = 130,000137$ $\text{♩} = 130,000137$

71 $\text{♩} = 130,000137$ $\text{♩} = 130,000137$ $\text{♩} = 130,000137$ $\text{♩} = 130,000137$

75 $\text{♩} = 130,000137$ $\text{♩} = 130,000137$ $\text{♩} = 130,000137$ $\text{♩} = 130,000137$

79 $\text{♩} = 130,000137$ $\text{♩} = 130,000137$ $\text{♩} = 130,000137$ $\text{♩} = 130,000137$

Rhythm & SE 3

83

Four measures of music, each starting with a tempo marking of quarter note = 130,000137. The notation consists of a treble clef staff with rhythmic patterns of eighth notes and sixteenth notes, and a bass clef staff with corresponding chordal accompaniment. A slur is present over the first two notes of the third measure.

87

Four measures of music, each starting with a tempo marking of quarter note = 130,000137. The notation consists of a treble clef staff with rhythmic patterns of eighth notes and sixteenth notes, and a bass clef staff with corresponding chordal accompaniment. A slur is present over the first two notes of the third measure.

91

Four measures of music, each starting with a tempo marking of quarter note = 130,000137. The notation consists of a treble clef staff with rhythmic patterns of eighth notes and sixteenth notes, and a bass clef staff with corresponding chordal accompaniment. A slur is present over the first two notes of the third measure.

95

Four measures of music, each starting with a tempo marking of quarter note = 130,000137. The notation consists of a treble clef staff with rhythmic patterns of eighth notes and sixteenth notes, and a bass clef staff with corresponding chordal accompaniment. A slur is present over the first two notes of the third measure.

99

Four measures of music, each starting with a tempo marking of quarter note = 130,000137. The notation consists of a treble clef staff with rhythmic patterns of eighth notes and sixteenth notes, and a bass clef staff with corresponding chordal accompaniment. A slur is present over the first two notes of the third measure.

102

Four measures of music, each starting with a tempo marking of quarter note = 130,000137. The notation consists of a treble clef staff with rhythmic patterns of eighth notes and sixteenth notes, and a bass clef staff with corresponding chordal accompaniment. A slur is present over the first two notes of the third measure.

Cars - Shake It Up

Bass

The image displays a bass line for the song "Shake It Up" from the movie "Cars". The music is written in 4/4 time and consists of eight systems of four measures each. The first system includes a key signature change from C major to B-flat major. The tempo is marked as 130,000137. The notation includes various rhythmic patterns such as eighth and sixteenth notes, and rests. The second system begins with a measure number '5' above the staff. The third system begins with a measure number '9'. The fourth system begins with a measure number '13'. The fifth system begins with a measure number '17'. The sixth system begins with a measure number '21'. The seventh system begins with a measure number '25'. The eighth system begins with a measure number '29'. The ninth system begins with a measure number '33'. The tenth system begins with a measure number '37'. The key signature changes back to C major in the final system.

V.S.

2

Bass

41 ♪ = 130,000137 ♪ = 130,000137 ♪ = 130,000137 ♪ = 130,000137



45 ♪ = 130,000137 ♪ = 130,000137 ♪ = 130,000137 ♪ = 130,000137



49 ♪ = 130,000137 ♪ = 130,000137 ♪ = 130,000137 ♪ = 130,000137



53 ♪ = 130,000137 ♪ = 130,000137 ♪ = 130,000137 ♪ = 130,000137



57 ♪ = 130,000137 ♪ = 130,000137 ♪ = 130,000137 ♪ = 130,000137



61 ♪ = 130,000137 ♪ = 130,000137 ♪ = 130,000137 ♪ = 130,000137



65 ♪ = 130,000137 ♪ = 130,000137 ♪ = 130,000137 ♪ = 130,000137



69 ♪ = 130,000137 ♪ = 130,000137 ♪ = 130,000137 ♪ = 130,000137




73 ♪ = 130,000137 ♪ = 130,000137 ♪ = 130,000137 ♪ = 130,000137



77 ♪ = 130,000137 ♪ = 130,000137 ♪ = 130,000137 ♪ = 130,000137



81 $\text{♩} = 130,000137$ $\text{♩} = 130,000137$ $\text{♩} = 130,000137$ $\text{♩} = 130,000137$ Bass



Four measures of bass guitar notation in a single system. Each measure contains a sequence of eighth notes. The first three measures are in a key with one flat (B-flat), and the fourth measure is in a key with two flats (B-flat and E-flat). The notes in each measure are: G2, A2, Bb2, C3, D3, E3, F3, G3.

85 $\text{♩} = 130,000137$ $\text{♩} = 130,000137$ $\text{♩} = 130,000137$ $\text{♩} = 130,000137$



Four measures of bass guitar notation in a single system. Each measure contains a sequence of eighth notes. The first three measures are in a key with one flat (B-flat), and the fourth measure is in a key with two flats (B-flat and E-flat). The notes in each measure are: G2, A2, Bb2, C3, D3, E3, F3, G3.

89 $\text{♩} = 130,000137$ $\text{♩} = 130,000137$ $\text{♩} = 130,000137$ $\text{♩} = 130,000137$



Four measures of bass guitar notation in a single system. Each measure contains a sequence of eighth notes. The first three measures are in a key with one flat (B-flat), and the fourth measure is in a key with two flats (B-flat and E-flat). The notes in each measure are: G2, A2, Bb2, C3, D3, E3, F3, G3.

93 $\text{♩} = 130,000137$ $\text{♩} = 130,000137$ $\text{♩} = 130,000137$ $\text{♩} = 130,000137$



Four measures of bass guitar notation in a single system. Each measure contains a sequence of eighth notes. The first three measures are in a key with one flat (B-flat), and the fourth measure is in a key with two flats (B-flat and E-flat). The notes in each measure are: G2, A2, Bb2, C3, D3, E3, F3, G3.

97 $\text{♩} = 130,000137$ $\text{♩} = 130,000137$ $\text{♩} = 130,000137$ $\text{♩} = 130,000137$




Four measures of bass guitar notation in a single system. Each measure contains a sequence of eighth notes. The first three measures are in a key with one flat (B-flat), and the fourth measure is in a key with two flats (B-flat and E-flat). The notes in each measure are: G2, A2, Bb2, C3, D3, E3, F3, G3.

101 $\text{♩} = 130,000137$ $\text{♩} = 130,000137$



Two measures of bass guitar notation in a single system. Each measure contains a sequence of eighth notes. The first measure is in a key with one flat (B-flat), and the second measure is in a key with two flats (B-flat and E-flat). The notes in each measure are: G2, A2, Bb2, C3, D3, E3, F3, G3.

103 $\text{♩} = 130,000137$ $\text{♩} = 130,000137$ $\text{♩} = 130,000137$



Three measures of bass guitar notation in a single system. The first two measures contain sequences of eighth notes. The first measure is in a key with one flat (B-flat), and the second measure is in a key with two flats (B-flat and E-flat). The notes in each measure are: G2, A2, Bb2, C3, D3, E3, F3, G3. The third measure is empty.

Cars - Shake It Up

Guitar

♩ = 130,000137 = 130,000137 = 130,000137 = 130,000137 = 130,000137 = 130,000137 = 130,000137 = 130,000137

10 ♩ = 130,000137 ♩ = 130,000137 ♩ = 130,000137 ♩ = 130,000137

14 ♩ = 130,000137 ♩ = 130,000137 ♩ = 130,000137 ♩ = 130,000137

18 ♩ = 130,000137 ♩ = 130,000137 ♩ = 130,000137 ♩ = 130,000137

22 ♩ = 130,000137 ♩ = 130,000137 ♩ = 130,000137 ♩ = 130,000137

26 ♩ = 130,000137 ♩ = 130,000137 ♩ = 130,000137 ♩ = 130,000137

30 ♩ = 130,000137 ♩ = 130,000137 ♩ = 130,000137 ♩ = 130,000137

34 ♩ = 130,000137 ♩ = 130,000137 ♩ = 130,000137 ♩ = 130,000137

38 ♩ = 130,000137 ♩ = 130,000137 ♩ = 130,000137 ♩ = 130,000137

42 ♩ = 130,000137 ♩ = 130,000137 ♩ = 130,000137 ♩ = 130,000137

V.S.

Guitar

46 ♪ = 130,000137 ♪ = 130,000137 ♪ = 130,000137 ♪ = 130,000137

50 ♪ = 130,000137 ♪ = 130,000137 ♪ = 130,000137 ♪ = 130,000137

54 ♪ = 130,000137 ♪ = 130,000137 ♪ = 130,000137

57 ♪ = 130,000137 ♪ = 130,000137 ♪ = 130,000137 ♪ = 130,000137

61 ♪ = 130,000137 ♪ = 130,000137 ♪ = 130,000137 ♪ = 130,000137

65 ♪ = 130,000137 ♪ = 130,000137 ♪ = 130,000137 ♪ = 130,000137 ♪ = 130,000137

70 ♪ = 130,000137 ♪ = 130,000137 ♪ = 130,000137 ♪ = 130,000137

74 ♪ = 130,000137 ♪ = 130,000137 ♪ = 130,000137 ♪ = 130,000137

78 ♪ = 130,000137 ♪ = 130,000137 ♪ = 130,000137

81 ♪ = 130,000137 ♪ = 130,000137 ♪ = 130,000137 ♪ = 130,000137

85 ♪ = 130,000137 ♪ = 130,000137 ♪ = 130,000137 ♪ = 130,000137

89 ♪ = 130,000137 ♪ = 130,000137 ♪ = 130,000137 ♪ = 130,000137

93 ♪ = 130,000137 ♪ = 130,000137 ♪ = 130,000137 ♪ = 130,000137

97 ♪ = 130,000137 ♪ = 130,000137 ♪ = 130,000137 ♪ = 130,000137

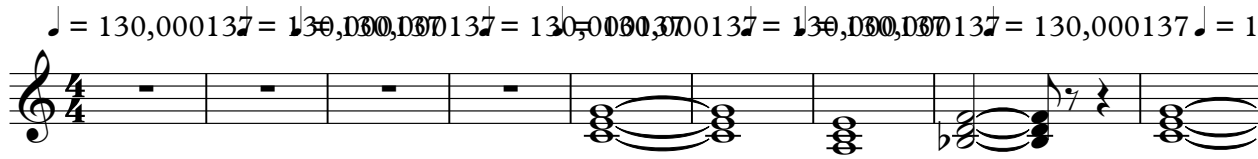
101 ♪ = 130,000137 ♪ = 130,000137

103 ♪ = 130,000137 ♪ = 130,000137 ♪ = 130,000137

Cars - Shake It Up

Chords

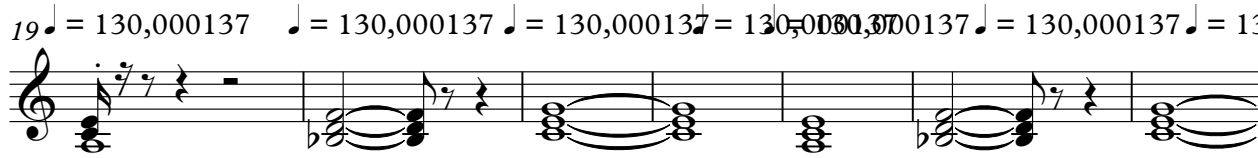
♩ = 130,000137 = 130,030,0370137 = 130,000,3700137 = 130,030,0370137 = 130,000137 ♩ = 130,0001



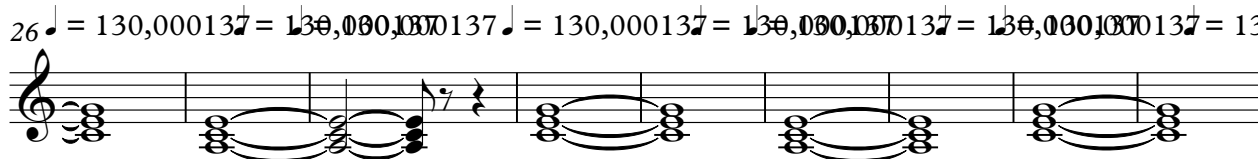
10 ♩ = 130,000137 = 130,000,3700137 ♩ = 130,030,0370137 = 130,030,0370137 ♩ = 130,030,0370137



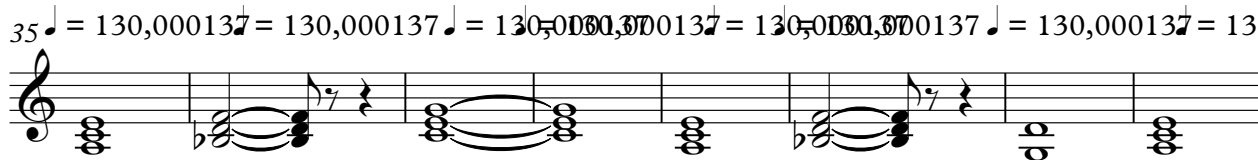
19 ♩ = 130,000137 ♩ = 130,000137 ♩ = 130,000137 = 130,000,3700137 ♩ = 130,000137 ♩ = 130,000137




26 ♩ = 130,000137 = 130,030,0370137 ♩ = 130,000137 = 130,030,0370137 = 130,000,3700137 = 130,000137




35 ♩ = 130,000137 = 130,000137 ♩ = 130,000,3700137 = 130,000,3700137 ♩ = 130,000137 = 130,000137



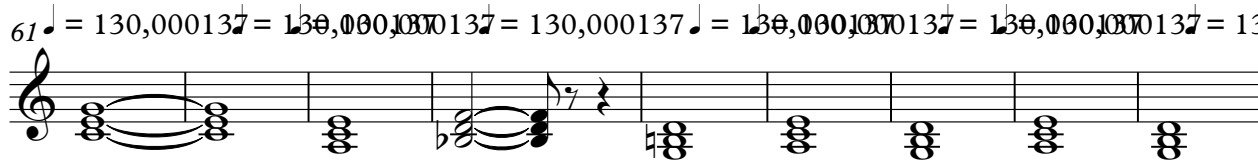
43 ♩ = 130,000137 = 130,000,3700137 = 130,000,3700137 = 130,000137 ♩ = 130,030,0370137 = 130,000137



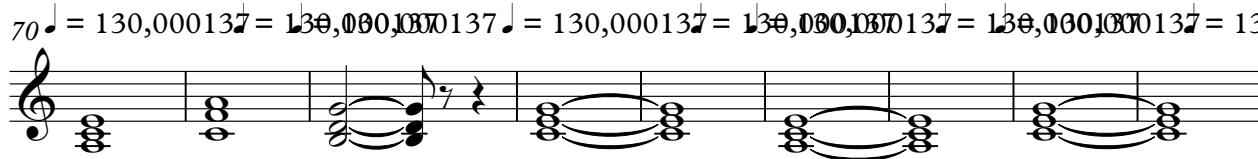
52 ♩ = 130,000137 = 130,000,3700137 = 130,000,3700137 = 130,000,3700137 = 130,000,3700137



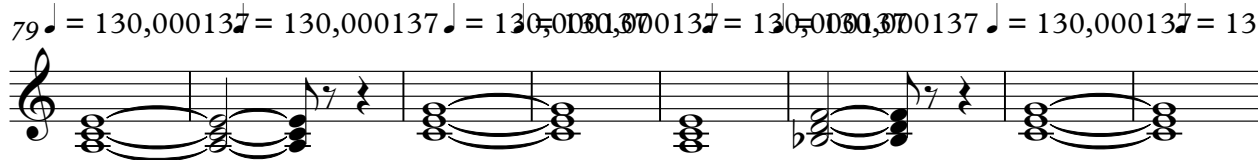
61 ♩ = 130,000137 = 130,000,3700137 = 130,000137 ♩ = 130,000,3700137 = 130,000,3700137 = 130,000137



70 ♩ = 130,000137 = 130,000,3700137 ♩ = 130,000137 = 130,030,0370137 = 130,000,3700137 = 130,000137



79 ♩ = 130,000137 = 130,000137 ♩ = 130,000,3700137 = 130,000,3700137 ♩ = 130,000137 = 130,000137

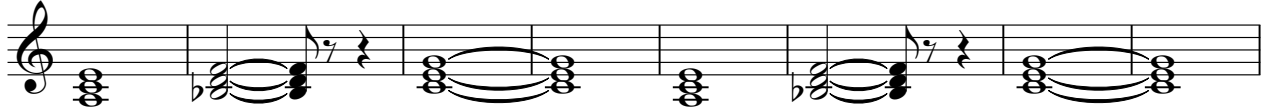


V.S.

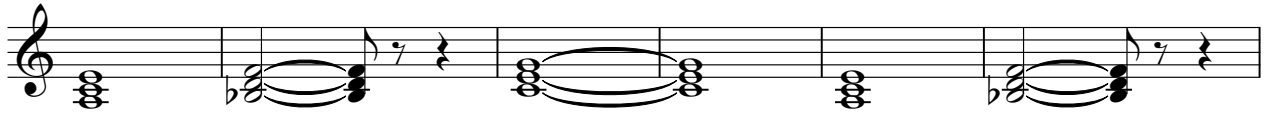
2

Chords

87 ♪ = 130,000137 ♪ = 130,000137 ♪ = 130,000137 ♪ = 130,000137 ♪ = 130,000137 ♪ = 130,000137 ♪ = 130,000137



95 ♪ = 130,000137 ♪ = 130,000137 ♪ = 130,000137 ♪ = 130,000137 ♪ = 130,000137 ♪ = 130,000137



101 ♪ = 130,000137 ♪ = 130,000137 ♪ = 130,000137 ♪ = 130,000137 ♪ = 130,000137



Cars - Shake It Up

Vocal

♩ = 130,000137 = ~~130,000,000~~137 = ~~130,000,000~~137 = ~~130,000,000~~137 = ~~130,000,000~~137

10 ♩ = 130,000137 ♩ = 130,000137 ♩ = 130,000137 ♩ = 130,000137 ♩ = 130,000137

15 ♩ = 130,000137 ♩ = 130,000137 ♩ = 130,000137 ♩ = 130,000137 ♩ = 130,000137

20 ♩ = 130,000137 ♩ = 130,000137 ♩ = 130,000137 ♩ = 130,000137 ♩ = 130,000137 ♩ = 130,000137

26 ♩ = 130,000137 ♩ = 130,000137 ♩ = 130,000137 ♩ = 130,000137 ♩ = 130,000137

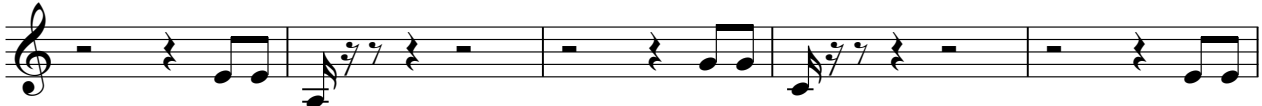
31 ♩ = 130,000137 ♩ = 130,000137 ♩ = 130,000137 ♩ = 130,000137 ♩ = 130,000137

36 ♩ = 130,000137 ♩ = 130,000137 ♩ = 130,000137 ♩ = 130,000137 ♩ = 130,000137

Vocal


3

90 ♪ = 130,000137 ♪ = 130,000137 ♪ = 130,000137 ♪ = 130,000137 ♪ = 130,000137




A musical staff in treble clef containing five measures. Measure 90: quarter rest, quarter note G4, quarter note A4. Measure 91: quarter note G4, quarter note A4, quarter note B4, quarter note C5. Measure 92: quarter note B4, quarter note A4, quarter note G4, quarter note F4. Measure 93: quarter note F4, quarter note G4, quarter note A4, quarter note B4. Measure 94: quarter note A4, quarter note G4, quarter note F4, quarter note E4.

95 ♪ = 130,000137 ♪ = 130,000137 ♪ = 130,000137 ♪ = 130,000137 ♪ = 130,000137



A musical staff in treble clef containing five measures. Measure 95: quarter note E4, quarter note F4, quarter note G4, quarter note A4. Measure 96: quarter note A4, quarter note B4, quarter note C5, quarter note B4. Measure 97: quarter note A4, quarter note G4, quarter note F4, quarter note E4. Measure 98: quarter note D4, quarter note E4, quarter note F4, quarter note G4. Measure 99: quarter note G4, quarter note A4, quarter note B4, quarter note C5.

100 ♪ = 130,000137 ♪ = 130,000137 ♪ = 130,000137 ♪ = 130,000137 ♪ = 130,000137 ♪ = 130,000137



A musical staff in treble clef containing five measures. Measure 100: quarter note E4, quarter note F4, quarter note G4, quarter note A4. Measure 101: quarter note A4, quarter note B4, quarter note C5, quarter note B4. Measure 102: quarter note A4, quarter note G4, quarter note F4, quarter note E4. Measure 103: quarter note D4, quarter note E4, quarter note F4, quarter note G4. Measure 104: quarter note G4, quarter note A4, quarter note B4, quarter note C5.