

S Club 7 - Bring It All Back

♩ = 105,000107

Whistle

Drums

Detailed description: This block shows the first system of music. The Whistle part is written on a treble clef staff in 4/4 time. It begins with a rest, followed by a melodic line consisting of three groups of triplets. The notes in each triplet are G4, A4, and B4. The Drums part is written on a drum clef staff in 4/4 time, featuring a simple rhythmic pattern of quarter notes.



2

Flute

Whistle

Drums

Bass

Brass

Detailed description: This block shows the second system of music. The Flute part is written on a treble clef staff, starting with a measure rest and then playing a melodic line. The Whistle part is also on a treble clef staff, playing a similar melodic line. The Drums part is on a drum clef staff, featuring a complex rhythmic pattern with various drum sounds. The Bass part is on a bass clef staff, playing a melodic line. The Brass part is on a treble clef staff, playing a melodic line.

3

Flute

Whistle

Drums

Bass

Brass



4

Flute

Whistle

Drums

Bass

Brass

5

Flute

Whistle

Drums

Bass

Brass



6

Flute

Whistle

Drums

Bass

Brass

7

Flute

Whistle

Drums

Bass

Brass

Detailed description: This system contains measures 7 and 8 of a musical score. It features five staves: Flute, Whistle, Drums, Bass, and Brass. Measure 7 is marked with a '7' above the Flute staff. The Flute part has a melodic line with notes G4, A4, B4, C5, B4, A4, G4, F4, E4, D4, C4. The Whistle part has notes G4, A4, B4, C5, B4, A4, G4, F4, E4, D4, C4. The Drums part has a complex rhythmic pattern with various drum sounds. The Bass part has notes G2, F2, E2, D2, C2, B1, A1, G1, F1, E1, D1, C1. The Brass part has notes G2, F2, E2, D2, C2, B1, A1, G1, F1, E1, D1, C1.



8

Flute

Whistle

Drums

Bass

Brass

Detailed description: This system contains measures 8 and 9 of a musical score. It features five staves: Flute, Whistle, Drums, Bass, and Brass. Measure 8 is marked with an '8' above the Flute staff. The Flute part has a melodic line with notes G4, A4, B4, C5, B4, A4, G4, F4, E4, D4, C4. The Whistle part has notes G4, A4, B4, C5, B4, A4, G4, F4, E4, D4, C4. The Drums part has a complex rhythmic pattern with various drum sounds. The Bass part has notes G2, F2, E2, D2, C2, B1, A1, G1, F1, E1, D1, C1. The Brass part has notes G2, F2, E2, D2, C2, B1, A1, G1, F1, E1, D1, C1.

9

Flute

Whistle

Drums

Bass

Brass



10

Drums

Guitar

Bass



12

Flute

Drums

Guitar

Bass

14

Drums

Guitar

Bass

Brass

Detailed description: This block contains the musical notation for measures 14 and 15. It features four staves: Drums, Guitar, Bass, and Brass. The Drums staff shows a complex rhythmic pattern with various note heads and stems. The Guitar staff uses a treble clef and contains a series of eighth notes with stems pointing down. The Bass staff uses a bass clef and contains a sequence of eighth notes with stems pointing up. The Brass staff uses a treble clef and contains a sequence of eighth notes with stems pointing up. The notation includes various musical symbols such as beams, stems, and note heads.



16

Drums

Guitar

Bass

Brass

Detailed description: This block contains the musical notation for measures 16 and 17. It features four staves: Drums, Guitar, Bass, and Brass. The Drums staff shows a complex rhythmic pattern with various note heads and stems. The Guitar staff uses a treble clef and contains a series of eighth notes with stems pointing down. The Bass staff uses a bass clef and contains a sequence of eighth notes with stems pointing up. The Brass staff uses a treble clef and contains a sequence of eighth notes with stems pointing up. The notation includes various musical symbols such as beams, stems, and note heads.

17

Drums

Guitar

Bass

Organ

Brass



18

Drums

Bass

Organ

Brass

19

Drums

Bass

Organ

Brass



21

Drums

Bass

Organ

Brass

24

Flute

Whistle

Drums

Bass

Brass

Detailed description: This system contains measures 24 through 27. The Flute part (top staff) features a melodic line with eighth and quarter notes, including a key signature change to one sharp (F#) in measure 25. The Whistle part (second staff) provides a harmonic accompaniment with sustained notes. The Drums part (third staff) has a consistent rhythmic pattern of eighth notes with accents. The Bass part (fourth staff) plays a simple bass line with quarter notes. The Brass part (bottom staff) plays chords and melodic fragments, including a key signature change to one sharp in measure 25.



25

Flute

Whistle

Drums

Bass

Brass

Detailed description: This system contains measures 28 through 31. The Flute part (top staff) continues the melodic line from the previous system. The Whistle part (second staff) continues its accompaniment. The Drums part (third staff) maintains the same rhythmic pattern. The Bass part (fourth staff) continues with quarter notes. The Brass part (bottom staff) plays chords and melodic fragments, including a key signature change to one sharp in measure 29.

26

Flute

Whistle

Drums

Bass

Brass



27

Flute

Whistle

Drums

Bass

Brass

28

Flute

Whistle

Drums

Bass

Brass



29

Flute

Whistle

Drums

Bass

Brass

30

Drums

Guitar

Bass



32

Flute

Drums

Guitar

Bass



34

Drums

Guitar

Bass

41

Drums

Guitar

Bass

Organ

Brass



42

Drums

Bass

Organ

Brass

43

Drums

Bass

Organ

Brass



45

Drums

Bass

Organ

Brass

46

Flute

Whistle

Drums

Bass

Brass



47

Flute

Whistle

Drums

Bass

Brass

48

Flute

Whistle

Drums

Bass

Brass



49

Flute

Whistle

Drums

Bass

Brass

50

Flute

Whistle

Drums

Bass

Brass

Detailed description: This system contains measures 50 and 51. The Flute part (top staff) has a treble clef and a key signature of one sharp (F#). It features a melodic line with eighth and quarter notes, including rests. The Whistle part (second staff) has a treble clef and a key signature of one sharp, with a simpler melodic line. The Drums part (third staff) has a drum clef and shows a complex rhythmic pattern with various note heads and beams. The Bass part (fourth staff) has a bass clef and a key signature of one sharp, with a melodic line. The Brass part (bottom staff) has a treble clef and a key signature of one sharp, with a melodic line. A double bar line is located between measures 50 and 51.



51

Flute

Whistle

Drums

Bass

Brass

Detailed description: This system contains measures 51 and 52. The Flute part (top staff) has a treble clef and a key signature of one sharp, with a melodic line. The Whistle part (second staff) has a treble clef and a key signature of one sharp, with a melodic line. The Drums part (third staff) has a drum clef and shows a complex rhythmic pattern. The Bass part (fourth staff) has a bass clef and a key signature of one sharp, with a melodic line. The Brass part (bottom staff) has a treble clef and a key signature of one sharp, with a melodic line.

52

Flute

Whistle

Drums

Bass

Brass



53

Flute

Whistle

Drums

Bass

Brass

54

Drums

Guitar

Bass

Brass

Measures 54-55. Drums: Snare and hi-hat pattern. Guitar: Rhythmic strumming. Bass: Walking bass line. Brass: Harmonic accompaniment.



56

Drums

Guitar

Bass

Brass

Measures 56-57. Drums: Snare and hi-hat pattern. Guitar: Rhythmic strumming. Bass: Walking bass line. Brass: Harmonic accompaniment.



58

Drums

Guitar

Bass

Brass

Measures 58-59. Drums: Snare and hi-hat pattern. Guitar: Rhythmic strumming. Bass: Walking bass line. Brass: Harmonic accompaniment.

60

Drums

Guitar

Bass

Brass

Detailed description: This block contains the musical notation for measures 60 and 61. The score is arranged in four staves: Drums, Guitar, Bass, and Brass. Measure 60 is marked with a '60' above the drum staff. The drum part features a complex, multi-layered pattern with various rhythmic values and accents. The guitar part consists of a series of eighth notes with slurs. The bass part has a melodic line with a sharp sign. The brass part has a similar melodic line with slurs and a sharp sign.



61

Drums

Guitar

Bass

Organ

Brass

Detailed description: This block contains the musical notation for measures 61 and 62. The score is arranged in five staves: Drums, Guitar, Bass, Organ, and Brass. Measure 61 is marked with a '61' above the drum staff. The drum part continues with a similar complex pattern. The guitar part has a melodic line with a rest. The bass part has a melodic line with a sharp sign. The organ part has a melodic line with a triplet of eighth notes marked with a '3'. The brass part has a melodic line with slurs and a sharp sign.

62

Drums

Bass

Organ

Brass

Detailed description: This block contains the musical notation for measures 62 and 63. The Drums part features a complex, multi-layered pattern with various rhythmic values and accents. The Bass part consists of a melodic line with eighth and sixteenth notes, including a triplet. The Organ part has a few notes in the first measure followed by rests. The Brass part has a melodic line starting in the second measure, featuring a triplet and a half note.



63

Drums

Bass

Organ

Brass

Detailed description: This block contains the musical notation for measures 63 and 64. The Drums part continues with a complex, multi-layered pattern. The Bass part has a melodic line with eighth and sixteenth notes, including a triplet. The Organ part has a few notes in the first measure followed by rests. The Brass part has a melodic line starting in the second measure, featuring a triplet and a half note.

65

Whistle

Drums

Bass

Organ

Brass



67

Flute

Whistle

Drums

69

Flute

Whistle

Drums

Bass

Brass

Detailed description: This system contains measures 69 and 70. The Flute part (treble clef) features a melodic line with eighth and sixteenth notes, including accidentals. The Whistle part (treble clef) provides harmonic support with sustained notes. The Drums part (percussion clef) shows a steady eighth-note pattern with accents. The Bass part (bass clef) has a simple eighth-note line. The Brass part (treble clef) plays block chords with some movement.



71

Flute

Whistle

Drums

Bass

Brass

Detailed description: This system contains measures 71 and 72. The Flute part (treble clef) continues the melodic line. The Whistle part (treble clef) has sustained notes. The Drums part (percussion clef) maintains the eighth-note pattern. The Bass part (bass clef) has a more complex eighth-note line. The Brass part (treble clef) plays block chords with some movement.

72

Flute

Whistle

Drums

Bass

Brass



73

Flute

Whistle

Drums

Bass

Brass

74

Flute

Whistle

Drums

Bass

Brass

Detailed description: This system contains measures 74 and 75. The Flute part (top staff) has a treble clef and a key signature of one flat. It features a melodic line with eighth and quarter notes, including a triplet of eighth notes in measure 75. The Whistle part (second staff) has a treble clef and provides harmonic support with chords and single notes. The Drums part (third staff) uses a drum set notation with various symbols for snare, hi-hat, and bass drum. The Bass part (fourth staff) has a bass clef and plays a rhythmic line with eighth and quarter notes. The Brass part (bottom staff) has a treble clef and plays block chords and moving lines.



75

Flute

Whistle

Drums

Bass

Brass

Detailed description: This system contains measures 75 and 76. The Flute part (top staff) continues the melodic line from measure 75, featuring a triplet of eighth notes. The Whistle part (second staff) continues with harmonic support. The Drums part (third staff) maintains the rhythmic pattern. The Bass part (fourth staff) continues with its rhythmic line. The Brass part (bottom staff) continues with block chords and moving lines.

76

Flute

Whistle

Drums

Bass

Brass

Detailed description: This system contains measures 76 and 77. The Flute part (treble clef) starts with a B-flat and plays a melodic line with eighth and quarter notes. The Whistle part (treble clef) plays a lower melodic line with quarter notes. The Drums part (percussion clef) features a complex rhythmic pattern with snare and tom-tom hits. The Bass part (bass clef) provides a simple harmonic accompaniment with quarter notes. The Brass part (treble clef) plays a blocky accompaniment with chords and single notes.



77

Flute

Whistle

Drums

Bass

Brass

Detailed description: This system contains measures 77 and 78. The Flute part (treble clef) continues the melodic line from measure 76. The Whistle part (treble clef) plays a lower melodic line with quarter notes. The Drums part (percussion clef) features a complex rhythmic pattern with snare and tom-tom hits. The Bass part (bass clef) provides a simple harmonic accompaniment with quarter notes. The Brass part (treble clef) plays a blocky accompaniment with chords and single notes.

78

Flute

Whistle

Drums

Bass

Brass



79

Flute

Whistle

Drums

Bass

Brass

80

Flute

Whistle

Drums

Bass

Brass



81

Flute

Whistle

Drums

Bass

Brass

82

Flute

Whistle

Drums

Bass

Brass



83

Flute

Whistle

Drums

Bass

Brass

84

Flute

Whistle

Drums

Bass

Brass

Detailed description: This system contains measures 84 through 87. The Flute part (treble clef) starts with a B-flat and plays a melodic line with eighth notes and quarter notes. The Whistle part (treble clef) plays a similar melodic line. The Drums part (percussion clef) features a complex rhythmic pattern with eighth and sixteenth notes, including accents and beams. The Bass part (bass clef) plays a simple line with quarter notes and a half note. The Brass part (treble clef) plays a harmonic accompaniment with chords and moving lines.



85

Flute

Whistle

Drums

Bass

Brass

Detailed description: This system contains measures 85 through 88. The Flute part (treble clef) continues its melodic line, ending with a whole note. The Whistle part (treble clef) also continues its melodic line, ending with a whole note. The Drums part (percussion clef) continues its rhythmic pattern, ending with a whole note. The Bass part (bass clef) continues its simple line, ending with a whole note. The Brass part (treble clef) continues its harmonic accompaniment, ending with a whole note.

Flute

S Club 7 - Bring It All Back

♩ = 105,000107

4

7

10

23

26

28

33



S Club 7 - Bring It All Back

Drums

♩ = 105,000107

3

5

7

9

11

13

15

17

19

V.S.

21

23

25

27

29

31

33

35

37

39

41

43

45

47

49

51

53

55

57

59

V.S.

Drums

61

Two staves of music. The top staff contains a series of 'x' marks with beams, representing cymbal or hi-hat patterns. The bottom staff contains a series of upward-pointing triangles with stems, representing a drum pattern. A double bar line is present after measure 61.

63

Two staves of music. The top staff contains a series of 'x' marks with beams. The bottom staff contains a series of upward-pointing triangles with stems. A double bar line is present after measure 63.

65

Two staves of music. The top staff contains a series of 'x' marks with beams. The bottom staff contains a series of upward-pointing triangles with stems. A double bar line is present after measure 65.

67

Two staves of music. The top staff is empty. The bottom staff contains a series of upward-pointing triangles with stems. A double bar line is present after measure 67.

69

Two staves of music. The top staff is empty. The bottom staff contains a series of upward-pointing triangles with stems. A double bar line is present after measure 69.

71

Two staves of music. The top staff contains a series of 'x' marks with beams. The bottom staff contains a series of upward-pointing triangles with stems. A double bar line is present after measure 71.

73

Two staves of music. The top staff contains a series of 'x' marks with beams. The bottom staff contains a series of upward-pointing triangles with stems. A double bar line is present after measure 73.

75

Two staves of music. The top staff contains a series of 'x' marks with beams. The bottom staff contains a series of upward-pointing triangles with stems. A double bar line is present after measure 75.

77

Two staves of music. The top staff contains a series of 'x' marks with beams. The bottom staff contains a series of upward-pointing triangles with stems. A double bar line is present after measure 77.

79

Two staves of music. The top staff contains a series of 'x' marks with beams. The bottom staff contains a series of upward-pointing triangles with stems. A double bar line is present after measure 79.

Drums

81

Musical notation for a drum set at measure 81. The notation is on a single staff with a treble clef and a common time signature. It features a complex rhythmic pattern with various drum sounds represented by 'x' marks and 'o' marks. The pattern is divided into two measures by a bar line. The first measure contains a series of eighth notes, and the second measure contains a series of quarter notes. The notation is dense and intricate, typical of a drum set score.

83

Musical notation for a drum set at measure 83. The notation is on a single staff with a treble clef and a common time signature. It features a complex rhythmic pattern with various drum sounds represented by 'x' marks and 'o' marks. The pattern is divided into two measures by a bar line. The first measure contains a series of eighth notes, and the second measure contains a series of quarter notes. The notation is dense and intricate, typical of a drum set score.

85

Musical notation for a drum set at measure 85. The notation is on a single staff with a treble clef and a common time signature. It features a complex rhythmic pattern with various drum sounds represented by 'x' marks and 'o' marks. The pattern is divided into two measures by a bar line. The first measure contains a series of eighth notes, and the second measure contains a series of quarter notes. The notation is dense and intricate, typical of a drum set score.

S Club 7 - Bring It All Back

Guitar

♩ = 105,000107

9

12

15

18

12

32

35

38

40

12

54



57



60



25

36



39



42



45



48



52



56



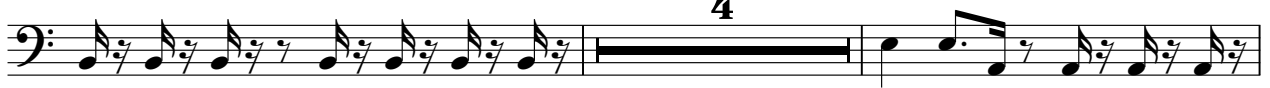
59



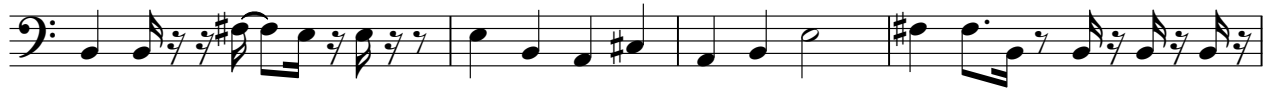
62



65



71



Organ

S Club 7 - Bring It All Back

♩ = 105,000107

16

3

21

19

3

44

15

3

62

21

S Club 7 - Bring It All Back

Brass

♩ = 105,000107

4

6

8

14

17

21

23

25

27

V.S.

29 8

39

42

46

48

50

52

55

58

61

65

4

71

73

75

77

79

81

83

84