

# Green Day - All By Myself

♩ = 180,000183

Green Day

Dookie

6

Green Day

"All By Myself"

Dookie

11

Green Day

"All By Myself"

Dookie

16

Green Day

"All By Myself"

Dookie

21

Green Day

"All By Myself"

Dookie

26

Green Day

"All By Myself"

Dookie

31

Green Day

"All By Myself"

Dookie

36

Green Day

"All By Myself"

Dookie

41

Green Day

"All By Myself"

Dookie

46

Green Day

"All By Myself"

Dookie

51

Green Day

"All By Myself"

Dookie

56

Green Day

"All By Myself"

Dookie

61

Green Day

"All By Myself"

Dookie

66

Green Day

"All By Myself"

Dookie

71

Green Day

"All By Myself"

Dookie

74

1994

Green Day

"All By Myself"

Dookie

1994

# Green Day - All By Myself

♩ = 180,000183

**75**

Musical notation for the beginning of the song, showing a treble clef, a key signature of one sharp (F#), and a time signature of 6/8. The notation includes a whole note chord on the G string (G4) in the first measure, followed by a quarter note G4, a quarter rest, and a quarter note G4 with a fermata in the second measure. The piece ends with a double bar line.

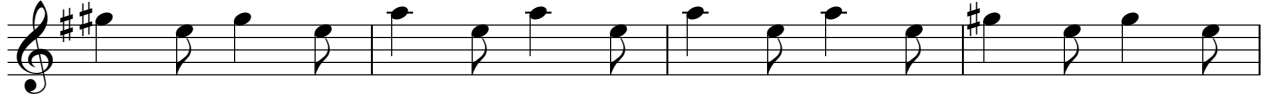
♩ = 180,000183



2

# Green Day

70



74



"All By Myself"

Green Day - All By Myself

♩ = 180,000183  
7

15

24

32

40

48

56

64

70

Detailed description: This is a bass guitar score for the song "All By Myself" by Green Day. The music is written in G major (one sharp) and 6/8 time. The tempo is marked as 180,000183. The score consists of ten staves of music, each starting with a measure number (7, 15, 24, 32, 40, 48, 56, 64, 70). The notation includes various rhythmic values such as eighth and sixteenth notes, often beamed together, and rests. Many notes are grouped under slurs, indicating a melodic line. The bass clef and key signature (one sharp) are clearly indicated at the beginning of each staff. The piece concludes with a double bar line and a final chord.



Dookie

Green Day - All By Myself

♩ = 180,000183

1

12

23

34

44

54

65

71