

Hootie And The Blowfish - I Go Blind

♩ = 120,000000

drums

piano

acoustic gtr

crunch gtr

bass

The image displays a musical score for the song "I Go Blind" by Hootie and the Blowfish. It features five staves: drums, piano, acoustic guitar, crunch guitar, and bass. The tempo is marked as 120,000000. The drums part shows a complex rhythmic pattern with various note values and rests. The piano part is mostly silent, with some chords in the final measure. The acoustic guitar part has a melodic line with many slurs. The crunch guitar part has a few notes in the final measure. The bass part has a few notes in the final measure.

4

drums

piano

acoustic gtr

crunch gtr

bass

3



6

drums

acoustic gtr

bass

3



8

drums

acoustic gtr

bass

3

10

drums

acoustic gtr

bass



12

drums

acoustic gtr

bass



14

drums

acoustic gtr

bass



16

drums

acoustic gtr

bass

18

drums

acoustic gtr

bass



20

drums

acoustic gtr

bass



22

drums

acoustic gtr

bass

24

drums

piano

acoustic gtr

bass

This system contains measures 24 and 25. The drums part features a steady eighth-note pattern with a triplet of eighth notes at the end of measure 25. The piano part is silent. The acoustic guitar part has a rhythmic pattern of eighth notes with some rests. The bass part has a melodic line with a triplet of eighth notes at the end of measure 25.



26

drums

piano

acoustic gtr

bass

organ

This system contains measures 26 and 27. The drums part has a more complex pattern with some accents and a triplet of eighth notes. The piano part has a sustained chord in measure 27. The acoustic guitar part has a rhythmic pattern of eighth notes. The bass part has a melodic line. The organ part has a sustained chord in measure 27.



28

drums

piano

bass

organ

This system contains measures 28 and 29. The drums part has a pattern with accents and triplets. The piano part has a sustained chord in measure 29. The bass part has a melodic line. The organ part has a melodic line in measure 29.

30

drums

piano

acoustic gtr

bass

organ



31

drums

piano

acoustic gtr

bass



33

drums

piano

acoustic gtr

bass

35

drums

piano

acoustic gtr

bass

Detailed description: This system covers measures 35 and 36. The drums part features a consistent rhythmic pattern of eighth notes. The piano part consists of a single sustained whole note chord. The acoustic guitar part has a complex rhythmic pattern with many eighth notes and rests. The bass part features a steady eighth-note line with a triplet of eighth notes in the first measure of measure 36.



37

drums

piano

acoustic gtr

bass

Detailed description: This system covers measures 37 and 38. The drums part continues with the same eighth-note pattern. The piano part remains a sustained whole note chord. The acoustic guitar part continues with its rhythmic pattern, including a triplet of eighth notes in the first measure of measure 38. The bass part continues with its eighth-note line.



39

drums

piano

acoustic gtr

bass

Detailed description: This system covers measures 39 and 40. The drums part continues with the eighth-note pattern. The piano part remains a sustained whole note chord. The acoustic guitar part continues with its rhythmic pattern, including a triplet of eighth notes in the first measure of measure 40. The bass part continues with its eighth-note line.

41

drums

piano

acoustic gtr

bass

Detailed description: This system covers measures 41 and 42. The drums part features a complex rhythmic pattern with many sixteenth notes and accents. The piano part has a long, sustained note in the first measure followed by a melodic line in the second. The acoustic guitar part has a rhythmic accompaniment with many sixteenth notes and rests. The bass part provides a steady, rhythmic foundation with eighth and sixteenth notes.



43

drums

piano

acoustic gtr

bass

Detailed description: This system covers measures 43 and 44. The drums part continues with a rhythmic pattern of eighth and sixteenth notes. The piano part has a long, sustained note in the first measure followed by a melodic line in the second. The acoustic guitar part features a triplet of eighth notes in the first measure and a rhythmic accompaniment in the second. The bass part provides a steady, rhythmic foundation with eighth and sixteenth notes.



45

drums

piano

acoustic gtr

bass

Detailed description: This system covers measures 45 and 46. The drums part features a complex rhythmic pattern with many sixteenth notes and accents. The piano part has a long, sustained note in the first measure followed by a melodic line in the second. The acoustic guitar part has a rhythmic accompaniment with eighth and sixteenth notes. The bass part provides a steady, rhythmic foundation with eighth and sixteenth notes.

46 3 9

drums

piano

acoustic gtr

bass



47

drums

piano

acoustic gtr

bass

49

drums

piano

acoustic gtr

bass



51

drums

piano

acoustic gtr

bass

53

drums

piano

acoustic gtr

bass



55

drums

piano

acoustic gtr

bass

57

drums

piano

acoustic gtr

bass

||

Detailed description: This block contains the musical notation for measures 57 and 58. The score is arranged in four staves: drums (top), piano, acoustic guitar, and bass (bottom). Measure 57 features a complex drum pattern with eighth and sixteenth notes. The piano part has a sustained chord with a fermata. The acoustic guitar part has a triplet of eighth notes. The bass part has a steady eighth-note rhythm. A double bar line is placed at the end of measure 58.

59

drums

piano

acoustic gtr

bass

organ

Detailed description: This block contains the musical notation for measures 59 and 60. The score is arranged in five staves: drums, piano, acoustic guitar, bass, and organ (bottom). Measure 59 features a complex drum pattern with eighth and sixteenth notes. The piano part has a sustained chord with a fermata. The acoustic guitar part has a triplet of eighth notes. The bass part has a steady eighth-note rhythm. The organ part has a sustained chord with a fermata. Measure 60 continues the patterns from measure 59.

61

drums

piano

acoustic gtr

bass

organ

Detailed description: This system contains measures 61 and 62. The drums part features a steady eighth-note pattern with occasional accents. The piano part has long, sustained chords. The acoustic guitar part consists of long, sustained chords. The bass part plays a simple eighth-note line. The organ part has a melodic line with some grace notes.



63

drums

piano

acoustic gtr

bass

organ

Detailed description: This system contains measures 63 and 64. The drums part has a more complex pattern with triplets and accents. The piano part features a sixteenth-note triplet in the right hand and a triplet in the left hand. The acoustic guitar part has a rhythmic pattern with many grace notes. The bass part plays a rhythmic eighth-note line with triplets. The organ part is mostly silent.

65

drums

acoustic gtr

bass



67

drums

acoustic gtr

bass



69

drums

acoustic gtr

bass



71

drums

acoustic gtr

bass

73

drums

acoustic gtr

bass

3

3



75

drums



78

drums



80

drums



82

drums

acoustic gtr

bass

3



84

drums

acoustic gtr

bass

3

86

drums

acoustic gtr

bass



88

drums

acoustic gtr

bass



89

drums

piano

acoustic gtr

bass

Hootie And The Blowfish - I Go Blind

drums

♩ = 120,000000

5

7

10

13

16

19

22

25

27

V.S.

30

33

36

39

42

45

48

51

54

56

59

3

62

3 3

65

68

3

71

3 3

74

77

80

83

86

4

drums

88

Musical notation for drums, measures 88-91. The notation is on a single staff with a double bar line at the beginning and end. Measure 88 contains a series of eighth notes with stems pointing up, followed by a triplet of eighth notes. Measure 89 contains a series of eighth notes with stems pointing up, followed by a quarter note. Measure 90 contains a series of eighth notes with stems pointing up, followed by a quarter note. Measure 91 contains a series of eighth notes with stems pointing up, followed by a quarter note.

Hootie And The Blowfish - I Go Blind

piano

♩ = 120,000000

2 19 19

26 3 3

31 6

40

46 3

52

59 6 3

V.S.

2

piano

64

25

The musical notation is on a single staff with a treble clef. It begins with a whole rest in the first measure. The second measure contains a fermata over a whole note. The third measure features a trill on a quarter note. The fourth measure contains a triplet of eighth notes. The fifth measure has a half note with a fermata. The sixth measure has a whole note with a fermata. The piece concludes with a double bar line.

Hootie And The Blowfish - I Go Blind

acoustic gtr

♩ = 120,000000

The image displays a musical score for an acoustic guitar, written in treble clef with a 4/4 time signature. The tempo is indicated as 120,000000. The score consists of ten staves of music, with measure numbers 4, 7, 9, 11, 13, 16, 19, 21, and 23 marked at the beginning of their respective staves. The music features a complex rhythmic pattern with many sixteenth and thirty-second notes, often beamed together. There are several triplet markings (indicated by a '3' over a bracket) and various rests throughout the piece. The notation includes stems, beams, and note heads, with some notes having flags or beams to indicate precise timing. The overall style is intricate and characteristic of the band's sound.

V.S.

53

56

58

63

66

68

71

73

82



85



88



Hootie And The Blowfish - I Go Blind

crunch gtr

♩ = 120,000000

2 86

Hootie And The Blowfish - I Go Blind

bass

♩ = 120,000000

2

7

11

14

18

21

24

27

31

34

V.S.

37



40



44



48



51



55



59



64



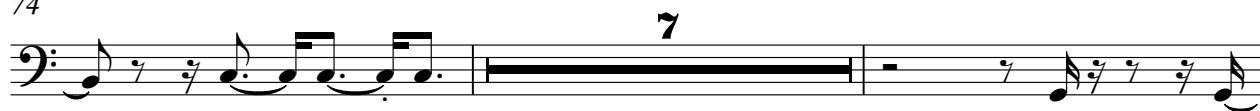
68



71



74



83



86



89



organ

Hootie And The Blowfish - I Go Blind

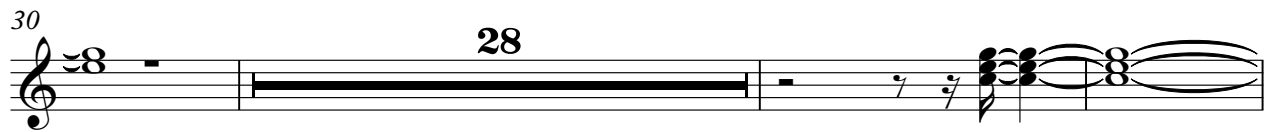
♩ = 120,000000

25



30

28



61

28

