

# Hot Chocolate - Everyones A Winner

♩ = 113,000099

Staff-1

Staff-2

Staff-3

Staff-4

Staff-5

♩ = 113,000099



4

Staff-1

Staff-2

Staff-3

Staff-4

Staff-5

Staff-6

Staff-7

Copyright © 1998 by Chris Rada  
All Rights Reserved

7

Staff-1  
Staff-2  
Staff-6  
Staff-3  
Staff-4  
Staff-7



10

Staff-1  
Staff-2  
Staff-6  
Staff-3  
Staff-7

12

Staff-1  
Staff-2  
Staff-6  
Staff-3  
Staff-8  
Staff-4  
Staff-7



15

Staff-1  
Staff-2  
Staff-3  
Staff-8  
Staff-4  
Staff-7

18

Staff-1  
Staff-2  
Staff-3  
Staff-8  
Staff-4  
Staff-7



21

Staff-1  
Staff-2  
Staff-3  
Staff-8  
Staff-4  
Staff-9  
Staff-7

24

Staff-1: Guitar tablature with 'x' marks on strings and rhythmic notation.

Staff-2: Guitar tablature with rhythmic notation.

Staff-3: Bass clef staff with rhythmic notation.

Staff-8: Treble clef staff with melodic notation.

Staff-4: Bass clef staff with melodic notation.

Staff-9: Treble clef staff with melodic notation.

Staff-7: Treble clef staff with chord diagrams.



26

Staff-1: Guitar tablature with 'x' marks on strings and rhythmic notation.

Staff-2: Guitar tablature with rhythmic notation.

Staff-3: Bass clef staff with rhythmic notation.

Staff-8: Treble clef staff with melodic notation.

Staff-4: Bass clef staff with melodic notation.

Staff-9: Treble clef staff with melodic notation.

Staff-7: Treble clef staff with chord diagrams.

28

Staff-1

Staff-2

Staff-3

Staff-4

Staff-5

Staff-7

Staff-8

Staff-9

31

Staff-1  
Staff-2  
Staff-6  
Staff-3  
Staff-8  
Staff-4  
Staff-9  
Staff-7



33

Staff-1  
Staff-2  
Staff-6  
Staff-3  
Staff-4  
Staff-7

36

Staff-1: Guitar tablature with 'x' marks on strings and a '\*' above the first measure.

Staff-2: Rhythm guitar accompaniment with chords and single notes.

Staff-6: Melodic line in treble clef with eighth and sixteenth notes.

Staff-3: Bass line in bass clef with eighth and sixteenth notes.

Staff-7: Chordal accompaniment in bass clef with chords and a 7th fret barre.



38

Staff-1: Guitar tablature with 'x' marks and a '\*' above the third measure.

Staff-2: Rhythm guitar accompaniment with chords and single notes.

Staff-6: Melodic line in treble clef, mostly rests.

Staff-3: Bass line in bass clef with eighth and sixteenth notes.

Staff-8: Melodic line in treble clef with eighth notes.

Staff-4: Rhythm guitar accompaniment with chords and single notes.

Staff-7: Chordal accompaniment in bass clef with chords and a 7th fret barre.



41

Staff-1  
Staff-2  
Staff-3  
Staff-8  
Staff-4  
Staff-7



44

Staff-1  
Staff-2  
Staff-3  
Staff-8  
Staff-4  
Staff-7

47

Staff-1

Staff-2

Staff-3

Staff-8

Staff-4

Staff-9

Staff-7

50

Staff-1

Staff-2

Staff-3

Staff-4

Staff-5

Staff-6

Staff-7



52

Staff-1

Staff-2

Staff-3

Staff-4

Staff-5

Staff-6

Staff-7

54

Staff-1: Percussion notation with 'x' marks on a staff.

Staff-2: Percussion notation with notes on a staff.

Staff-3: Bass clef staff with a melodic line.

Staff-8: Treble clef staff with a melodic line.

Staff-4: Grand staff (treble and bass clefs) with chords and notes.

Staff-9: Treble clef staff with chords and notes.

Staff-7: Treble clef staff with chords and notes.

Staff-5: Treble clef staff with chords and notes.

57

Staff-1: Guitar tablature with 'x' marks for fretted notes and a star symbol for a natural harmonic. Staff-2: Rhythm guitar accompaniment. Staff-3: Bass line. Staff-4: Treble clef accompaniment. Staff-5: Bass clef accompaniment. Staff-6: Treble clef accompaniment. Staff-7: Treble clef accompaniment. Staff-8: Treble clef accompaniment.



59

Staff-1: Guitar tablature with 'x' marks for fretted notes and a star symbol for a natural harmonic. Staff-2: Rhythm guitar accompaniment. Staff-3: Bass line. Staff-4: Treble clef accompaniment. Staff-5: Bass clef accompaniment. Staff-6: Treble clef accompaniment. Staff-7: Treble clef accompaniment. Staff-8: Treble clef accompaniment.

62

Staff-1: Guitar tablature with fret numbers and an asterisk. Staff-2: Chordal accompaniment. Staff-3: Bass line. Staff-6: Treble clef with melodic line. Staff-7: Treble clef with sustained chords.



64

Staff-1: Guitar tablature with fret numbers and an asterisk. Staff-2: Chordal accompaniment. Staff-3: Bass line. Staff-4: Treble clef with chords. Staff-5: Treble clef with a triplet. Staff-6: Treble clef with a long note.

67

Staff-1: Guitar tablature with 'x' marks for fretted notes and a natural sign for an open string.

Staff-2: Chordal accompaniment with block chords.

Staff-3: Bass line with eighth-note patterns.

Staff-4: Treble clef accompaniment with eighth-note patterns.



70

Staff-1: Guitar tablature with 'x' marks for fretted notes and a natural sign for an open string.

Staff-2: Chordal accompaniment with block chords.

Staff-3: Bass line with eighth-note patterns.

Staff-4: Treble clef accompaniment with eighth-note patterns.

73

Staff-1: Guitar tablature with 'x' marks for fretted notes and a double bar line with an asterisk. Staff-2: Rhythm guitar accompaniment. Staff-3: Bass line. Staff-4: Treble clef accompaniment. Staff-6: Treble clef accompaniment. Staff-7: Treble clef accompaniment. Staff-9: Treble clef accompaniment.



75

Staff-1: Guitar tablature with 'x' marks for fretted notes. Staff-2: Rhythm guitar accompaniment. Staff-3: Bass line. Staff-4: Treble clef accompaniment. Staff-6: Treble clef accompaniment. Staff-7: Treble clef accompaniment. Staff-9: Treble clef accompaniment.



78

Staff-1: Guitar tablature with 'x' marks for fretted notes and a '\*' symbol above the first measure.

Staff-2: Rhythm guitar accompaniment with chords and single notes.

Staff-6: Melodic line in treble clef with eighth and sixteenth notes.

Staff-3: Bass line in bass clef with eighth and sixteenth notes.

Staff-9: Treble clef staff with a long slur over a whole note chord.

Staff-7: Treble clef staff with a long slur over a whole note chord.



80

Staff-1: Guitar tablature with 'x' marks for fretted notes.

Staff-2: Rhythm guitar accompaniment with chords and single notes.

Staff-6: Treble clef staff with a long slur over a whole note chord.

Staff-3: Bass line in bass clef with eighth and sixteenth notes.

Staff-4: Treble clef staff with chords and rests.

Staff-9: Treble clef staff with a long slur over a whole note chord.

Staff-7: Treble clef staff with a long slur over a whole note chord.

82

Staff-1: Guitar tablature with fret numbers and 'x' marks for mutes. Measure 82 has a double bar line with an asterisk above it. Measure 83 continues the pattern.

Staff-2: Rhythm guitar accompaniment with chords and single notes.

Staff-3: Bass line with eighth and sixteenth notes.

Staff-6: Treble clef with a complex melodic line featuring many accidentals.

Staff-7: Treble clef with a sustained chord.

Staff-9: Treble clef with a sustained chord.



84

Staff-1: Guitar tablature with fret numbers and 'x' marks for mutes.

Staff-2: Rhythm guitar accompaniment with chords and single notes.

Staff-3: Bass line with eighth and sixteenth notes.

Staff-4: Treble clef with chords and rests.

Staff-6: Treble clef with a sustained chord.

Staff-7: Treble clef with a sustained chord.

Staff-9: Treble clef with a sustained chord.

86

Staff-1: Guitar tablature with fret numbers and an asterisk marking a specific fret.

Staff-2: Bass guitar accompaniment with chords and single notes.

Staff-6: Treble clef staff with a complex melodic line.

Staff-3: Bass clef staff with a melodic line.

Staff-9: Treble clef staff with a long, sustained note.

Staff-7: Treble clef staff with a long, sustained note.



88

Staff-1: Guitar tablature with fret numbers.

Staff-2: Bass guitar accompaniment with chords and single notes.

Staff-6: Treble clef staff with a long, sustained note.

Staff-3: Bass clef staff with a melodic line.

Staff-4: Treble clef staff with chords and rests.

Staff-9: Treble clef staff with a long, sustained note.

Staff-7: Treble clef staff with a long, sustained note.

90

Staff-1: Guitar tablature with fret numbers and 'x' marks for mutes. Measure 90 has a double bar line with an asterisk above it. Measure 91 has a double bar line with a diamond above it.

Staff-2: Bass line with chords and single notes.

Staff-6: Treble clef with a melodic line.

Staff-3: Bass clef with a melodic line.

Staff-9: Treble clef with a long note and a chord change.

Staff-7: Treble clef with a long note and a chord change.



92

Staff-1: Guitar tablature with fret numbers and 'x' marks for mutes. Measure 92 has a double bar line with a diamond above it. Measure 93 has a double bar line with a diamond above it.

Staff-2: Bass line with chords and single notes.

Staff-6: Treble clef with a long note and a chord change.

Staff-3: Bass clef with a melodic line.

Staff-4: Treble clef with chords and rests.

Staff-9: Treble clef with a long note and a melodic line.

Staff-7: Treble clef with a long note and a chord change.

94

Staff-1: Guitar tablature with 'x' marks for fretted notes and a '\*' symbol above the first measure.

Staff-2: Bass line with eighth notes and chords.

Staff-6: Treble clef with a complex melodic line.

Staff-3: Bass clef with a melodic line.

Staff-4: Treble clef with a whole rest.

Staff-9: Treble clef with a long note and a slur.

Staff-7: Treble clef with a chord.



96

Staff-1: Guitar tablature with 'x' marks for fretted notes.

Staff-2: Bass line with eighth notes and chords.

Staff-6: Treble clef with a long note and a slur.

Staff-3: Bass clef with a melodic line.

Staff-4: Treble clef with a melodic line.

Staff-9: Treble clef with a long note and a slur.

Staff-7: Treble clef with a chord.

Hot Chocolate - Everyones A Winner  
Staff-1

♩ = 113,000099

1

5

9

13

17

21

25

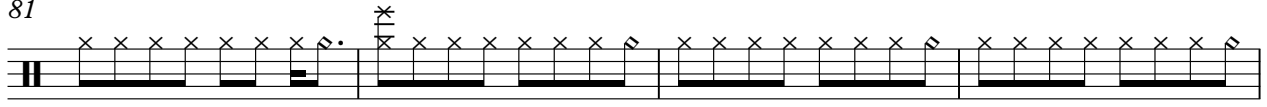
29

33

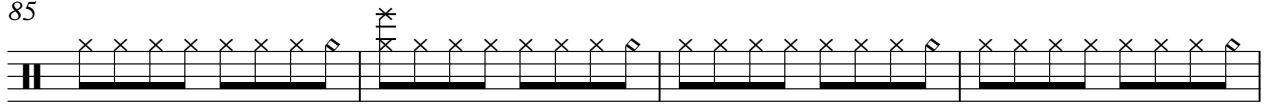
37



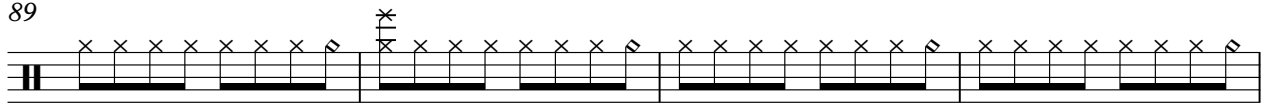
81



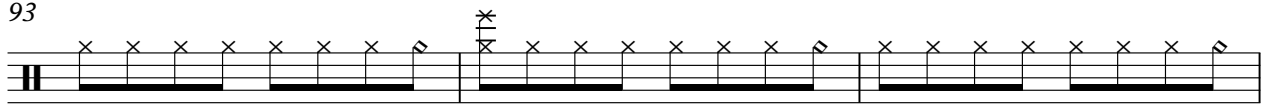
85



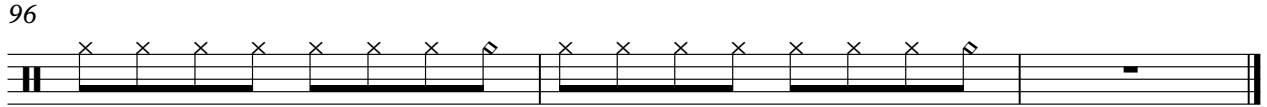
89



93



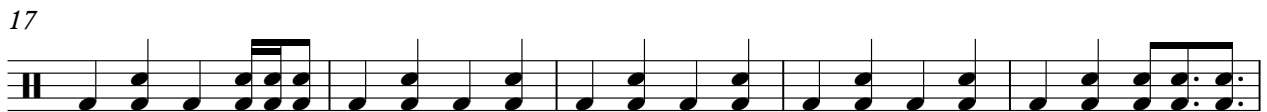
96





Staff-2 Hot Chocolate - Everyones A Winner

♩ = 113,000099



55



60



65



70



75



80



85



90



94



Staff-6 Hot Chocolate - Everyones A Winner

♩ = 113,000099

5

8

12

18

33

37

58

62

64

8

Copyright © 1998 by Chris Rada  
All Rights Reserved

74



78



82



86



90



94



95



Staff-3 Hot Chocolate - Everyones A Winner

♩ = 113,000099



Copyright © 1998 by Chris Rada  
All Rights Reserved

V.S.

35



39



42



45



48



51



54



57



61



65



68



71



75



79



83



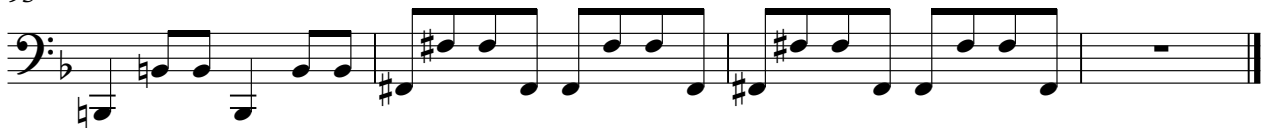
87



91



95



Staff-8 Hot Chocolate - Everyones A Winner

♩ = 113,000099

**13**

17

22

27

32

**8**

43

48

53

56

**41**

Copyright © 1998 by Chris Rada  
All Rights Reserved



Staff-4 Hot Chocolate - Everyones A Winner

♩ = 113,000099

2

8

2

15

22

27

2

34

2

40

Copyright © 1998 by Chris Rada  
All Rights Reserved

47

53

60

67

72

80

88

94

Staff-9 Hot Chocolate - Everyones A Winner

♩ = 113,000099

21

25

29 16

49

53

58 15

77

82

89

94

Copyright © 1998 by Chris Rada  
All Rights Reserved

Staff-7 Hot Chocolate - Everyones A Winner

♩ = 113,000099

5

12

21

29

37

46

54

61

8

Copyright © 1998 by Chris Rada  
All Rights Reserved

74



82



90



94



Staff-5 Hot Chocolate - Everyones A Winner

♩ = 113,000099

3 23

This musical staff contains measures 1 through 23. It begins with a treble clef and a key signature of one flat. The first measure is a whole rest. The second measure contains a triplet of eighth notes: G4 (with a sharp), A4, and B4. From measure 3 to measure 23, the staff is filled with a dense, continuous texture of notes, primarily consisting of sixteenth and thirty-second notes, with many notes beamed together and some slurs. A large number '23' is positioned above the end of the staff.

29

24

This musical staff contains measures 24 through 28. It continues with a treble clef and one flat key signature. Measure 24 is a whole rest. Measures 25 and 26 contain eighth notes with slurs. Measure 27 is a whole rest. Measure 28 contains eighth notes with slurs. A large number '24' is positioned above the end of the staff.

57

8 3 32

This musical staff contains measures 29 through 32. It continues with a treble clef and one flat key signature. Measures 29 and 30 are whole rests. Measure 31 contains a triplet of eighth notes: G4 (with a sharp), A4, and B4. Measure 32 is a whole rest. Large numbers '8', '3', and '32' are positioned above the staff.

Copyright © 1998 by Chris Rada  
All Rights Reserved