

Yanni - First Touch

♩ = 108,000107

Piano Left Channel

Piano Bass

Piano Right Channel

4

Piano Left Channel

Piano Bass

Piano Right Channel

6

Piano Left Channel

Piano Bass

Piano Right Channel

8

Piano Left Channel

Piano Bass

Piano Right Channel

10 $\text{♩} = 216,000610$

Piano Left Channel

Piano Bass

Piano Right Channel

13 $\text{♩} = 108,000107$

Piano Left Channel

Piano Bass

Piano Right Channel

15

Piano Left Channel

Piano Bass

Piano Right Channel

17

Piano Left Channel

Piano Bass

Piano Right Channel

19 ♩ = 162,000168

Piano Left Channel

Piano Bass

Piano Right Channel

This block contains the piano accompaniment for measures 19, 20, and 21. It consists of three staves: Piano Left Channel, Piano Bass, and Piano Right Channel. The key signature is one sharp (F#) and the time signature is 6/4. Measure 19 is a single measure. Measure 20 is split into two measures: the first is 5/4 and the second is 4/4. Measure 21 is a single measure in 5/4. The piano part features a mix of chords and moving lines, with some notes beamed together.

20 ♩ = 108,000107 ♩ = 162,000168 ♩ = 108,000107

Metal Clank

Piano Left Channel

Piano Bass

Piano Right Channel

This block contains the piano accompaniment for measures 20 and 21, including a 'Metal Clank' effect. It consists of four staves: Metal Clank, Piano Left Channel, Piano Bass, and Piano Right Channel. The key signature is one sharp (F#) and the time signature is 6/4. Measure 20 is split into two measures: the first is 5/4 and the second is 4/4. Measure 21 is a single measure in 5/4. The 'Metal Clank' staff has a rest in the first measure and a note in the second. The piano accompaniment continues with chords and moving lines.

22

Piano Left Channel

Piano Bass

Piano Right Channel

This block contains the piano accompaniment for measure 22. It consists of three staves: Piano Left Channel, Piano Bass, and Piano Right Channel. The key signature is one sharp (F#) and the time signature is 6/4. Measure 22 is a single measure. The piano part features a mix of chords and moving lines.

24

Piano Left Channel

Piano Bass

Piano Right Channel

This block contains the piano accompaniment for measure 24. It consists of three staves: Piano Left Channel, Piano Bass, and Piano Right Channel. The key signature is one sharp (F#) and the time signature is 6/4. Measure 24 is a single measure. The piano part features a mix of chords and moving lines.

26 ♩ = 108,000107

Piano Left Channel

Piano Bass

Piano Right Channel

28 ♩ = 216,000610

Piano Left Channel

Piano Bass

Piano Right Channel

31 ♩ = 108,000107 ♩ = 216,000610

Piano Left Channel

Piano Bass

Piano Right Channel

34 ♩ = 108,000107

Piano Left Channel

Piano Bass

Piano Right Channel

37 $\text{♩} = 216,000610$ 5

Piano Left Channel

Piano Bass

Piano Right Channel

40 $\text{♩} = 108,000107$

Piano Left Channel

Piano Bass

Piano Right Channel

43 $\text{♩} = 216,000610$ $\text{♩} = 108,000107$

Piano Left Channel

Piano Bass

Piano Right Channel

46

Hi-Note

Piano Left Channel

Piano Bass

Piano Right Channel

49

Hi-Note

Piano Left Channel

Piano Bass

Piano Right Channel

♩ = 216,000610

52

Piano Left Channel

Piano Bass

Piano Right Channel

♩ = 108,000107

55

Optional Fills

Piano Left Channel

Piano Bass

Piano Right Channel

♩ = 216,000610 ♩ = 108,000107 7

58

Optional Fills

Piano Left Channel

Piano Bass

Piano Right Channel

61

Optional Fills

Piano Left Channel

Piano Bass

Piano Right Channel

63

Piano Left Channel

Piano Bass

Piano Right Channel

65

Optional Fills

Piano Left Channel

Piano Bass

Piano Right Channel

67

Optional Fills

Piano Left Channel

Piano Bass

Piano Right Channel

$\text{♩} = 216,000610$

$\text{♩} = 108,000107$

70

Piano Left Channel

Piano Bass

Piano Right Channel

$\text{♩} = 216,000610$

$\text{♩} = 108,000107$

73 ♩ = 162,000168

Piano Left Channel

Piano Bass

Piano Right Channel

75 ♩ = 108,000107

Metal Clank

Piano Left Channel

Piano Bass

Piano Right Channel

77

Piano Left Channel

Piano Bass

Piano Right Channel

79

Piano Left Channel

Piano Bass

Piano Right Channel

81

Piano Left Channel

Piano Bass

Piano Right Channel

This musical score covers measures 81 to 83. It is written for three channels: Piano Left Channel, Piano Bass, and Piano Right Channel. The key signature is one flat (B-flat major or D minor), and the time signature is 5/4. Measure 81 features a complex piano texture with overlapping lines in all three channels. Measure 82 continues this texture with some melodic movement in the bass line. Measure 83 concludes the section with a final chord in the right channel and a sustained note in the bass.

83

Piano Left Channel

Piano Bass

Piano Right Channel

This musical score covers measures 83 to 85. The key signature changes to two flats (B-flat major or D minor), and the time signature changes to 5/4. Measure 83 shows a transition in the piano texture. Measure 84 features a prominent melodic line in the bass channel. Measure 85 ends with a final chord in the right channel and a sustained note in the bass.

Yanni - First Touch

Metal Clank

♩ = 108,000107 ♩ = 216,000610 ♩ = 108,000107 ♩ = 162,000168 ♩ = 108,000107

9 2 6 6 5

21 ♩ = 108,000107 ♩ = 108,000107 ♩ = 216,000610 ♩ = 108,000107 ♩ = 216,000610

4 3 2 2 2

35 ♩ = 108,000107 ♩ = 216,000610 ♩ = 108,000107 ♩ = 216,000610 ♩ = 108,000107 ♩ = 216,000610

4 2 2 2 9 2

56 ♩ = 108,000107 ♩ = 216,000610 ♩ = 108,000107 ♩ = 216,000610 ♩ = 108,000107 ♩ = 216,000610 ♩ = 108,000107

2 2 7 2 - 2

73 ♩ = 162,000168 ♩ = 108,000107

2 7 5

Yanni - First Touch

Hi-Note

$\text{♩} = 108,000107$ $\text{♩} = 216,000610$ $\text{♩} = 108,000107$ $\text{♩} = 162,000168$ $\text{♩} = 108,000107$

9 2 6

$\text{♩} = 108,000107$ $\text{♩} = 108,000107$ $\text{♩} = 216,000610$ $\text{♩} = 108,000107$ $\text{♩} = 216,000610$ $\text{♩} = 108,000107$

5 3 2 2 2 4

$\text{♩} = 216,000610$ $\text{♩} = 108,000107$ $\text{♩} = 216,000610$ $\text{♩} = 108,000107$

2 2 2 3

$\text{♩} = 216,000610$ $\text{♩} = 108,000107$ $\text{♩} = 216,000610$ $\text{♩} = 108,000107$

3 2 2 2 7

$\text{♩} = 216,000610$ $\text{♩} = 108,000107$ $\text{♩} = 216,000610$ $\text{♩} = 108,000107$ $\text{♩} = 162,000168$

2 2 2

$\text{♩} = 108,000107$

8

Yanni - First Touch

Optional Fills

♩ = 108,000107 ♩ = 216,000610 ♩ = 108,000107 ♩ = 162,000168 ♩ = 108,000107

A musical staff in 4/4 time with six measures. The first measure is a whole rest. The second measure has a whole note with fret number 9. The third measure has a whole note with fret number 2. The fourth measure has a whole note with fret number 6. The fifth measure has a whole rest. The sixth measure has a whole rest. The time signature changes from 4/4 to 6/4 for the fifth measure and back to 4/4 for the sixth.

21 ♩ = 108,000107 ♩ = 108,000107 ♩ = 216,000610 ♩ = 108,000107 ♩ = 216,000610 ♩ = 108,000107

A musical staff in 4/4 time with six measures, each containing a whole note with a fret number: 5, 3, 2, 2, 2, 4.

39 ♩ = 216,000610 ♩ = 108,000107 ♩ = 216,000610 ♩ = 108,000107 ♩ = 216,000610 ♩ = 108,000107

A musical staff in 4/4 time with six measures, each containing a whole note with a fret number: 2, 2, 2, 9, 2.

57 ♩ = 216,000610 ♩ = 108,000107

A musical staff in 4/4 time with six measures. Measures 1, 3, and 5 contain melodic lines with eighth notes and slurs. Measures 2, 4, and 6 contain whole notes with fret numbers 2. Measure 2 also has a fret number 2 above the staff.

63 ♩ = 216,000610 ♩ = 108,000107 ♩ = 216,000610

A musical staff in 4/4 time with six measures. Measures 1, 3, and 5 contain melodic lines with eighth notes and slurs. Measures 2, 4, and 6 contain whole notes with fret numbers 3, 2, 2.

72 ♩ = 108,000107 ♩ = 162,000168 ♩ = 108,000107

A musical staff in 4/4 time with six measures. The first measure is a whole rest. The second measure has a whole note with fret number 2. The third measure has a whole note with fret number 8. The fourth measure has a whole rest. The fifth measure has a whole rest. The sixth measure has a whole rest. The time signature changes from 4/4 to 6/4 for the second measure and back to 4/4 for the others.

Yanni - First Touch

Piano Left Channel

♩ = 108,000107

6

11 ♩ = 216,000610 ♩ = 108,000107

16 ♩ = 162,000168

20 ♩ = 108,000107 ♩ = 162,000168 ♩ = 108,000107

24 ♩ = 108,000107

29 ♩ = 216,000610 ♩ = 108,000107 ♩ = 216,000610

35 ♩ = 108,000107 ♩ = 216,000610

40 ♩ = 108,000107 ♩ = 216,000610 ♩ = 108,000107

46

V.S.

51 $\text{♩} = 108,000107$

57 $\text{♩} = 216,000610$ $\text{♩} = 108,000107$

62

66 $\text{♩} = 216,000610$ $\text{♩} = 108,000107$ $\text{♩} = 216,000610$

71 $\text{♩} = 108,000107$ $\text{♩} = 162,000168$

75 $\text{♩} = 108,000107$

79 $\text{♩} = 99,000099$ $\text{♩} = 100,000000$

82 $\text{♩} = 106,000107$ $\text{♩} = 108,000107$ $\text{♩} = 105,000107$ $\text{♩} = 85,000046$ $\text{♩} = 72,000035$ $\text{♩} = 65,000069$

Yanni - First Touch

Piano Bass

♩ = 108,000107

5

8 ♩ = 216,000610

12 ♩ = 108,000107

16

19 ♩ = 162,000168 ♩ = 108,000107 ♩ = 162,000168

21 ♩ = 108,000107

24 ♩ = 108,000107

27 ♩ = 216,000610

31 ♩ = 108,000107 ♩ = 216,000610

V.S.

Piano Bass

35 ♪ = 108,000107

39 ♪ = 216,000610 ♪ = 108,000107

43 ♪ = 216,000610 ♪ = 108,000107

47

51 ♪ = 216,000610

55 ♪ = 108,000107 ♪ = 216,000610

60 ♪ = 108,000107

64 ♪ = 216,000610

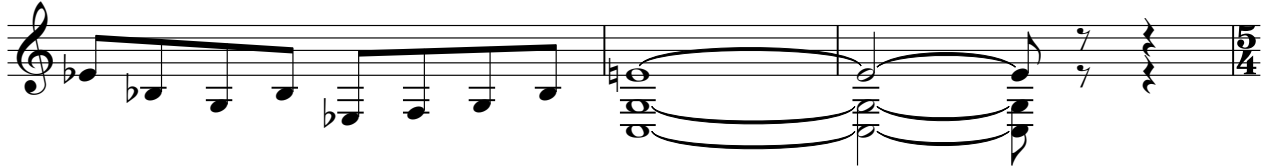
68 ♪ = 108,000107 ♪ = 216,000610 ♪ = 108,000107

73 ♪ = 162,000168 ♪ = 108,000107

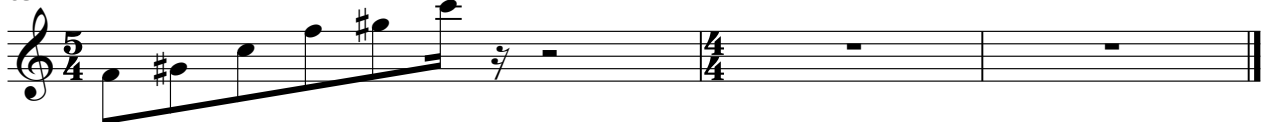
76



80



83



Yanni - First Touch

Piano Right Channel

♩ = 108,000107

6

11 ♩ = 216,000610 ♩ = 108,000107

16 ♩ = 162,000168

20 ♩ = 108,000107 ♩ = 162,000168 ♩ = 108,000107

24 ♩ = 108,000107

29 ♩ = 216,000610 ♩ = 108,000107 ♩ = 216,000610

35 ♩ = 108,000107 ♩ = 216,000610

40 ♩ = 108,000107 ♩ = 216,000610 ♩ = 108,000107

46

V.S.

51 $\text{♩} = 108,000107$

57 $\text{♩} = 216,000610$ $\text{♩} = 108,000107$

62

66 $\text{♩} = 216,000610$ $\text{♩} = 108,000107$ $\text{♩} = 216,000610$

71 $\text{♩} = 108,000107$ $\text{♩} = 162,000168$

75 $\text{♩} = 108,000107$

79 $\text{♩} = 99,000099$ $\text{♩} = 100,000000$

82 $\text{♩} = 106,000107$ $\text{♩} = 108,000107$ $\text{♩} = 76,000069$ $\text{♩} = 62,000061$ $\text{♩} = 108,000145$ $\text{♩} = 67,000065$ $\text{♩} = 108,000107$ $\text{♩} = 105,000107$ $\text{♩} = 85,000046$ $\text{♩} = 72,000066$ $\text{♩} = 65,000069$