

Kiss - Come On And Love Me

♩ = 132,000137

Drums

Rythem right

Bass

4

Drums

Rythem right

Lead

Rythem left

Bass

Copyright © 1997 by Enzo

7

Drums

Vocals

Rythem right

Lead

Lead

Rythem left

Bass

Detailed description: This system contains measures 7, 8, and 9. The drums play a consistent pattern of eighth notes. The vocal line begins in measure 8 with a melodic phrase. The right and left rhythm parts play chords, while the bass line provides a steady eighth-note accompaniment. Two lead parts are present, with the upper one containing a melodic line and the lower one being mostly silent.

10

Drums

Vocals

Rythem right

Lead

Lead

Rythem left

Bass

Detailed description: This system contains measures 10, 11, and 12. The drums continue their pattern. The vocal line has a melodic phrase in measure 10 and then rests. The right and left rhythm parts play chords, and the bass line continues with eighth notes. The upper lead part has a melodic line, while the lower lead part is silent.

13

Drums

Vocals

Rythem right

Rythem left

Bass

16

Drums

Vocals

Rythem right

Rythem left

Bass

18

Drums

Vocals

Rythem right

Rythem left

Bass

21

Drums

Vocals

Rythem right

Rythem left

Bass

24

Drums

Vocals

Rythem right

Rythem left

Bass

Detailed description: This system of music covers measures 24 and 25. The Drums part features a complex pattern with various note values and rests, including a double bar line in measure 25. The Vocals part has a melodic line with some rests and a final note in measure 25. The Rythem right and left parts consist of eighth-note chords. The Bass part has a simple eighth-note line.

26

Drums

Vocals

Rythem right

Rythem left

Bass

Detailed description: This system of music covers measures 26 and 27. The Drums part continues with a consistent pattern of eighth notes and rests. The Vocals part has a melodic line with some rests and a final note in measure 27. The Rythem right and left parts consist of eighth-note chords. The Bass part has a simple eighth-note line.

28

Drums

Vocals

Rythem right

Rythem left

Bass

30

Drums

Vocals

Rythem right

Rythem left

Bass

32

Drums

Vocals

Rythem right

Rythem left

Bass

7

34

Drums

Rythem right

Rythem left

Bass

36

Drums

Vocals

Rythem right

Lead

Lead

Rythem left

Bass

Detailed description: This system of musical notation covers measures 36 and 37. It features seven staves: Drums, Vocals, Rythem right, Lead, Lead, Rythem left, and Bass. The Drums staff shows a complex rhythmic pattern with various note values and rests. The Vocals staff contains a melodic line with some rests. The Rythem right and Rythem left staves provide harmonic accompaniment with chords and moving lines. The two Lead staves appear to be for guitar, with some notes and rests. The Bass staff provides a low-frequency accompaniment.

38

Drums

Vocals

Rythem right

Lead

Lead

Rythem left

Bass

Detailed description: This system of musical notation covers measures 38, 39, and 40. It features seven staves: Drums, Vocals, Rythem right, Lead, Lead, Rythem left, and Bass. The Drums staff continues with a consistent rhythmic pattern. The Vocals staff has a melodic line with some rests. The Rythem right and Rythem left staves provide harmonic accompaniment. The two Lead staves are mostly empty, indicating rests for the guitar parts. The Bass staff continues with its accompaniment.

41

Drums

Vocals

Rythem right

Rythem left

Bass

Detailed description: This block contains the musical notation for measures 41, 42, and 43. The score is arranged in five staves: Drums, Vocals, Rythem right, Rythem left, and Bass. Measure 41 shows a consistent drum pattern of eighth notes. The vocal line begins with a quarter rest followed by a series of eighth notes. The right and left rhythm staves feature chords, and the bass line consists of eighth notes. Measure 42 continues these patterns. Measure 43 shows a change in the drum pattern to a mix of eighth and quarter notes, and the vocal line has a quarter rest.

44

Drums

Vocals

Rythem right

Rythem left

Bass

Detailed description: This block contains the musical notation for measures 44, 45, and 46. Measure 44 features a drum pattern with a cymbal crash in the second measure. The vocal line has a quarter rest in the first measure followed by eighth notes. The rhythm staves and bass line continue with their respective parts. Measure 45 shows a change in the drum pattern to a mix of eighth and quarter notes. Measure 46 continues the patterns established in the previous measures.

46

Drums

Vocals

Rythem right

Rythem left

Bass

Detailed description: This system of musical notation covers measures 46 and 47. The Drums part uses a standard drum set notation with 'x' marks for cymbals and solid dots for other drums. The Vocals part shows a vocal line with a rest in measure 46 and a melodic phrase in measure 47. The Rythem right and left parts consist of eighth-note chords in a treble clef. The Bass part consists of eighth-note chords in a bass clef. The key signature has one sharp (F#).

48

Drums

Vocals

Rythem right

Rythem left

Bass

Detailed description: This system of musical notation covers measures 48 and 49. The Drums part continues with the same pattern as the previous system. The Vocals part has a rest in measure 48 and a melodic phrase in measure 49. The Rythem right and left parts continue with eighth-note chords. The Bass part continues with eighth-note chords. The key signature has one sharp (F#).

50

Drums

Vocals

Rythem right

Rythem left

Bass

Detailed description: This system contains measures 50 and 51. The Drums part features a consistent pattern of eighth notes with 'x' marks, indicating cymbal hits. The Vocals part has a melodic line with a double bar line and repeat sign at the end of measure 51. The Rythem right and left parts play chords in a steady eighth-note rhythm. The Bass part provides a simple eighth-note accompaniment.

52

Drums

Vocals

Rythem right

Rythem left

Bass

Detailed description: This system contains measures 52 and 53. The Drums part has a more complex pattern with a cymbal hit in measure 52 and a double bar line with repeat sign in measure 53. The Vocals part has a melodic line with a double bar line and repeat sign at the end of measure 53. The Rythem right and left parts continue with their chordal accompaniment. The Bass part continues with its eighth-note accompaniment.

54

Drums

Vocals

Rythem right

Rythem left

Bass

Detailed description: This system of musical notation covers measures 54 and 55. The Drums part features a consistent rhythmic pattern of eighth notes with 'x' marks indicating cymbal hits. The Vocals part shows a melodic line with notes on a treble clef staff, including a half note and a quarter note with a fermata. The Rythem right and left parts consist of chords in a treble clef, while the Bass part is a single-line melody in a bass clef.

56

Drums

Vocals

Rythem right

Rythem left

Bass

Detailed description: This system of musical notation covers measures 56 and 57. The Drums part continues with the same eighth-note pattern. The Vocals part has a whole rest in measure 56 and begins a new melodic phrase in measure 57. The Rythem right and left parts continue with their chordal accompaniment, and the Bass part provides a steady bass line.

58

Drums

Vocals

Rythem right

Rythem left

Bass

Detailed description: This system contains measures 58 and 59. The Drums part features a consistent rhythmic pattern of eighth notes with 'x' marks above them. The Vocals part has a melodic line with a key signature of one sharp (F#) and a common time signature. The Rythem right and left parts play a steady accompaniment of eighth notes. The Bass part provides a simple eighth-note bass line.

60

Drums

Vocals

Rythem right

Lead

Rythem left

Bass

Detailed description: This system contains measures 60 and 61. In measure 60, the Drums play a single eighth note followed by a rest. The Vocals part continues its melodic line. In measure 61, the Drums play a more complex rhythmic pattern. The Rythem right and left parts continue their accompaniment. The Lead part has a single eighth note in measure 60 and a more active line in measure 61. The Bass part continues its eighth-note bass line.

62

Drums

Vocals

Rythem right

Lead

Rythem left

Bass

Detailed description: This system of musical notation covers measures 62 and 63. The Drums part features a consistent rhythmic pattern of eighth notes with 'x' marks above them. The Vocals part has a melodic line with a fermata on the final note of measure 63. The Rythem right and left parts consist of eighth-note chords. The Lead part has a sparse melodic line with a fermata on the final note. The Bass part provides a steady eighth-note accompaniment.

64

Drums

Vocals

Rythem right

Lead

Rythem left

Bass

Detailed description: This system of musical notation covers measures 64 and 65. The Drums part continues with the same eighth-note pattern. The Vocals part is identical to the previous system. The Rythem right and left parts continue with eighth-note chords. The Lead part features a more active melodic line with eighth notes and a fermata on the final note. The Bass part continues with eighth-note accompaniment.

66

Drums

Vocals

Rythem right

Lead

Rythem left

Bass

Detailed description: This system of musical notation covers measures 66 and 67. The Drums part features a consistent pattern of eighth notes with 'x' marks above them, indicating cymbal hits. The Vocals part begins in measure 67 with a series of notes: G4, A4, B4, C5, B4, A4, G4, with a fermata over the final G4. The Rythem right and left parts play a steady eighth-note accompaniment. The Lead part has a few notes in measure 67, including a G4 with a fermata. The Bass part provides a simple eighth-note bass line.

68

Drums

Vocals

Rythem right

Lead

Rythem left

Bass

Detailed description: This system of musical notation covers measures 68 and 69. The Drums part continues with eighth notes and cymbal hits, but includes a double bar line in measure 69, suggesting a change in the drum pattern. The Vocals part starts in measure 69 with notes: G4, A4, B4, C5, B4, A4, G4. The Rythem right and left parts continue with their eighth-note accompaniment. The Lead part has a few notes in measure 69, including a G4 with a fermata. The Bass part continues with its eighth-note bass line.

70

Drums

Vocals

Rythem right

Rythem left

Bass

Detailed description: This system of musical notation covers measures 70 and 71. The Drums part features a consistent rhythmic pattern of eighth notes with 'x' marks indicating cymbal hits. The Vocals part shows a melodic line with notes on a treble clef staff, including a whole note rest in measure 71. The Rythem right and left parts consist of chords in a treble clef, while the Bass part is a single-line melody in a bass clef.

72

Drums

Vocals

Rythem right

Rythem left

Bass

Detailed description: This system of musical notation covers measures 72 and 73. The Drums part continues with the same eighth-note pattern. The Vocals part has a whole rest in measure 72 and begins a new melodic phrase in measure 73. The Rythem right and left parts continue with their chordal accompaniment, and the Bass part provides a steady melodic line.

74

Drums

Vocals

Rythem right

Rythem left

Bass

Detailed description: This system contains measures 74 and 75. The Drums part features a consistent rhythmic pattern of eighth notes with 'x' marks above them. The Vocals part has a melodic line with a sharp key signature and rests. The Rythem right and left parts play chords in a similar rhythmic pattern. The Bass part provides a steady eighth-note accompaniment.

76

Drums

Vocals

Rythem right

Lead

Rythem left

Bass

Detailed description: This system contains measures 76 and 77. In measure 76, the Drums play a snare drum followed by a cymbal. The Vocals part has a melodic line with a sharp key signature. In measure 77, the Drums play a cymbal followed by a snare drum. The Rythem right and left parts play chords. The Lead part has a melodic line with a sharp key signature. The Bass part provides a steady eighth-note accompaniment.

78

Drums

Vocals

Rythem right

Lead

Rythem left

Bass

Detailed description: This block contains the musical notation for measures 78 and 79. The score is arranged in a grand staff with six parts: Drums, Vocals, Rythem right, Lead, Rythem left, and Bass. Measure 78 shows a drum pattern with a snare on the second and fourth beats, and a bass drum on the first and third. The vocal line has a whole rest. The right and left rhythm parts play a steady eighth-note accompaniment. The lead part has a whole rest. The bass line plays a simple eighth-note pattern. Measure 79 features a drum pattern with a snare on the second and fourth beats, and a bass drum on the first and third. The vocal line has a whole note chord. The right and left rhythm parts continue their accompaniment. The lead part has a whole rest. The bass line continues its eighth-note pattern.

80

Drums

Vocals

Rythem right

Lead

Rythem left

Bass

Detailed description: This block contains the musical notation for measures 80 and 81. The score is arranged in a grand staff with six parts: Drums, Vocals, Rythem right, Lead, Rythem left, and Bass. Measure 80 shows a drum pattern with a snare on the second and fourth beats, and a bass drum on the first and third. The vocal line has a whole rest. The right and left rhythm parts play a steady eighth-note accompaniment. The lead part has a whole rest. The bass line plays a simple eighth-note pattern. Measure 81 features a drum pattern with a snare on the second and fourth beats, and a bass drum on the first and third. The vocal line has a whole note chord. The right and left rhythm parts continue their accompaniment. The lead part has a whole rest. The bass line continues its eighth-note pattern.

82 19

Drums

Vocals

Rythem right

Lead

Rythem left

Bass

84

Drums

Vocals

Rythem right

Lead

Lead

Rythem left

Bass

86

Drums

Vocals

Rythem right

Lead

Lead

Rythem left

Bass

Detailed description: This system of musical notation covers measures 86 and 87. It features seven staves: Drums, Vocals, Rythem right, Lead, Lead, Rythem left, and Bass. The Drums staff uses a drum set icon and 'x' marks for notes. The Vocals staff has a treble clef and contains vocal notes with lyrics. The Rythem right staff has a treble clef and contains rhythmic accompaniment. The Lead staff has a treble clef and contains lead guitar parts. The Rythem left staff has a treble clef and contains rhythmic accompaniment. The Bass staff has a bass clef and contains bass line notes.

88

Drums

Vocals

Rythem right

Lead

Lead

Rythem left

Bass

Detailed description: This system of musical notation covers measures 88 and 89. It features seven staves: Drums, Vocals, Rythem right, Lead, Lead, Rythem left, and Bass. The Drums staff uses a drum set icon and 'x' marks for notes. The Vocals staff has a treble clef and contains vocal notes with lyrics. The Rythem right staff has a treble clef and contains rhythmic accompaniment. The Lead staff has a treble clef and contains lead guitar parts. The Rythem left staff has a treble clef and contains rhythmic accompaniment. The Bass staff has a bass clef and contains bass line notes.

90

Drums

Vocals

Rythem right

Lead

Lead

Rythem left

Bass

Detailed description: This block contains the musical notation for measures 90 and 91. The Drums staff shows a complex rhythmic pattern with various note values and rests. The Vocals staff features a melodic line with some rests and a final note. The Rythem right staff has a series of chords and notes, some with slurs. The two Lead staves show melodic lines with slurs and accents. The Rythem left staff consists of a steady stream of chords. The Bass staff has a simple line of notes.

92

Lead

Lead

Rythem left

Detailed description: This block contains the musical notation for measures 92 and 93. The top Lead staff has a melodic line with a slur and a final note. The second Lead staff has a melodic line with slurs and accents. The Rythem left staff has a series of chords and notes.

94

Rythem left

Detailed description: This block contains the musical notation for measure 94. The Rythem left staff has a series of chords and notes.

Kiss - Come On And Love Me

Drums

♩ = 132,000137

6

10

14

18

22

25

27

29

31

Copyright © 1997 by Enzo

V.S.

2

Drums

34

Musical notation for drum set at measure 34. The notation is on a five-line staff with a double bar line on the left. It features a complex rhythmic pattern with various note values and rests. A snare drum symbol is present above the staff, and a cymbal symbol is above the staff at the end of the measure.

36

Musical notation for drum set at measure 36. The notation is on a five-line staff with a double bar line on the left. It features a complex rhythmic pattern with various note values and rests. A snare drum symbol is present above the staff.

39

Musical notation for drum set at measure 39. The notation is on a five-line staff with a double bar line on the left. It features a complex rhythmic pattern with various note values and rests.

43

Musical notation for drum set at measure 43. The notation is on a five-line staff with a double bar line on the left. It features a complex rhythmic pattern with various note values and rests. A snare drum symbol is present above the staff.

47

Musical notation for drum set at measure 47. The notation is on a five-line staff with a double bar line on the left. It features a complex rhythmic pattern with various note values and rests.

51

Musical notation for drum set at measure 51. The notation is on a five-line staff with a double bar line on the left. It features a complex rhythmic pattern with various note values and rests. A snare drum symbol is present above the staff, and a cymbal symbol is above the staff.

54

Musical notation for drum set at measure 54. The notation is on a five-line staff with a double bar line on the left. It features a complex rhythmic pattern with various note values and rests.

56

Musical notation for drum set at measure 56. The notation is on a five-line staff with a double bar line on the left. It features a complex rhythmic pattern with various note values and rests.

58

Musical notation for drum set at measure 58. The notation is on a five-line staff with a double bar line on the left. It features a complex rhythmic pattern with various note values and rests. A snare drum symbol is present above the staff.

61

Musical notation for drum set at measure 61. The notation is on a five-line staff with a double bar line on the left. It features a complex rhythmic pattern with various note values and rests. A snare drum symbol is present above the staff.

63

Musical notation for measure 63, featuring a drum staff with a double bar line on the left and a series of rhythmic patterns represented by 'x' marks on a five-line staff.

65

Musical notation for measure 65, featuring a drum staff with a double bar line on the left and a series of rhythmic patterns represented by 'x' marks on a five-line staff.

67

Musical notation for measure 67, featuring a drum staff with a double bar line on the left and a series of rhythmic patterns represented by 'x' marks on a five-line staff.

69

Musical notation for measure 69, featuring a drum staff with a double bar line on the left and a series of rhythmic patterns represented by 'x' marks on a five-line staff. A circled 'x' symbol is present above the staff.

71

Musical notation for measure 71, featuring a drum staff with a double bar line on the left and a series of rhythmic patterns represented by 'x' marks on a five-line staff.

73

Musical notation for measure 73, featuring a drum staff with a double bar line on the left and a series of rhythmic patterns represented by 'x' marks on a five-line staff.

75

Musical notation for measure 75, featuring a drum staff with a double bar line on the left and a series of rhythmic patterns represented by 'x' marks on a five-line staff. A circled 'x' symbol is present above the staff, and a slur is placed over the final two notes.

78

Musical notation for measure 78, featuring a drum staff with a double bar line on the left and a series of rhythmic patterns represented by 'x' marks on a five-line staff. A circled 'x' symbol is present above the staff, and a slur is placed over the final two notes.

80

Musical notation for measure 80, featuring a drum staff with a double bar line on the left and a series of rhythmic patterns represented by 'x' marks on a five-line staff. A circled 'x' symbol is present above the staff, and a slur is placed over the final two notes.

82

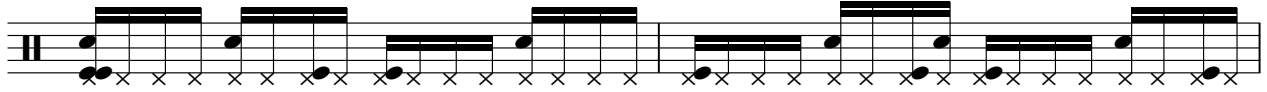
Musical notation for measure 82, featuring a drum staff with a double bar line on the left and a series of rhythmic patterns represented by 'x' marks on a five-line staff. A circled 'x' symbol is present above the staff, and a slur is placed over the final two notes.

V.S.

4

Drums

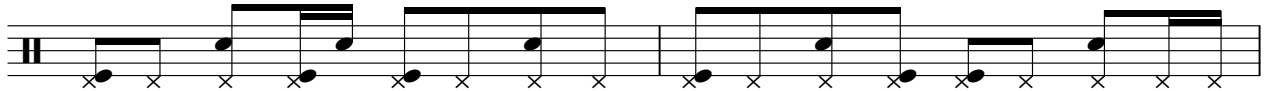
84



86



89



91



Kiss - Come On And Love Me

Vocals

♩ = 132,000137

7

11

15

19

23

28

31

2

Copyright © 1997 by Enzo

36

40

44

48

52

57

61

65

70

75

The image displays a musical score for a vocal line, consisting of ten staves of music. The score is written in treble clef and features a key signature of one sharp (F#). The measures are numbered 36 through 75. The music is characterized by a complex, rhythmic pattern, often using eighth and sixteenth notes, with frequent rests. The notation includes various accidentals (sharps and naturals) and dynamic markings. The overall style is that of a contemporary or modern vocal piece, possibly a solo or a part of a larger ensemble.

79



83



87



90



Kiss - Come On And Love Me

Rythem right

♩ = 132,000137



4



8



11



15



18



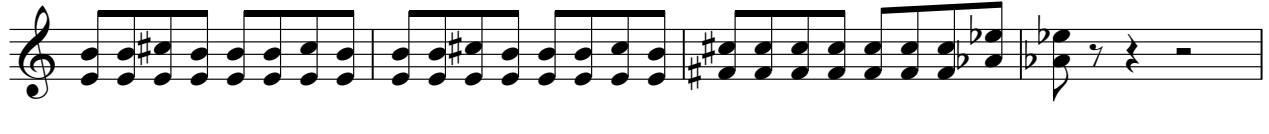
21



25



29



33



Copyright © 1997 by Enzo

V.S.

37



40



43



46



49



53



57



61



64



68



72



76



80



84



88



90



Kiss - Come On And Love Me

Lead

♩ = 132,000137

3

8

25

36

22

62

68

7

79

83

88

92

2

Copyright © 1997 by Enzo

Lead

Kiss - Come On And Love Me

♩ = 132,000137

7 25

36 46

85

88

91

93 2

Copyright © 1997 by Enzo

Kiss - Come On And Love Me

Rythem left

♩ = 132,000137

4

8

11

15

18

21

25

29

33

37

Copyright © 1997 by Enzo

V.S.



76



80



84



88



92



Kiss - Come On And Love Me

Bass

♩ = 132,000137



6



10



14



18



22



26



29



Copyright © 1997 by Enzo

33



37



41



45



49



53



57



61



65



69



73



77



81



85



88

