

0.0"  
1.1.00  
smtf0988  
♩ = 64,000000

Musical score for the first system, measures 1-3. The score includes parts for Percussion, Jazz Guitar, 5-string Fretless Electric Bass, Synth Strings, Lead 3 (Calliope), Pad 1 (New Age), FX 1 (Rain), and Solo. The tempo is marked as ♩ = 64,000000. The key signature has one sharp (F#) and the time signature is 4/4. The Percussion part features a complex rhythmic pattern with many 'x' marks. The Jazz Guitar part has triplets in measures 2 and 3. The 5-string Fretless Electric Bass part has a simple melodic line. The Synth Strings part has a few notes in measure 3. The Lead 3 (Calliope) part has a melodic line in measure 3. The Pad 1 (New Age) part has a melodic line in measure 3. The FX 1 (Rain) part has a melodic line in measure 3. The Solo part has a melodic line in measure 3.



Musical score for the second system, measures 4-6. The score includes parts for Perc., J. Gtr., E. Bass, Syn. Str., Lead 3, Pad 1, FX 1, and Solo. The tempo is marked as ♩ = 64,000000. The key signature has one sharp (F#) and the time signature is 4/4. The Perc. part continues with its complex rhythmic pattern. The J. Gtr. part has triplets in measure 4. The E. Bass part has a simple melodic line. The Syn. Str. part has a few notes in measure 6. The Lead 3 part has a melodic line in measure 6. The Pad 1 part has a melodic line in measure 6. The FX 1 part has a melodic line in measure 6. The Solo part has a melodic line in measure 6.

7

Perc.

E. Bass

Syn. Str.

Lead 3

Solo



11

Perc.

E. Bass

Lead 3

Solo

# Percussion

$\text{♩} = 64,000000$

5

8

11

# Jazz Guitar

♩ = 64,000000

Musical notation for the first line of a jazz guitar piece. It features a treble clef, a 4/4 time signature, and a tempo marking of 64,000000. The notation includes a quarter rest, followed by eighth notes, a complex chordal figure with a dot, and two triplet eighth notes.

Musical notation for the second line of a jazz guitar piece. It starts with a measure number '4' and contains eighth notes, triplet eighth notes, and a final measure with an 8-measure rest.

# 5-string Fretless Electric Bass

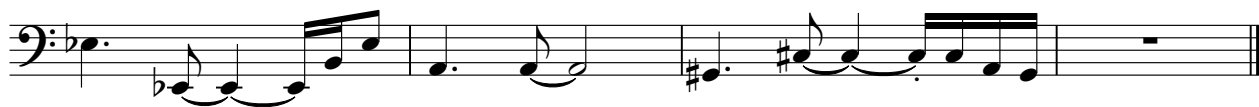
♩ = 64,000000



7



11



# Synth Strings

♩ = 64,000000

2

7

b

b

6

7

# Lead 3 (Calliope)

♩ = 64,000000

**4**

8

11

# Pad 1 (New Age)

♩ = 64,000000

2

3

3

Detailed description: This musical notation is for a pad instrument in 4/4 time. It starts with a tempo marking of 64,000000. The first measure contains a whole note chord with a fermata above it. The second measure contains a triplet of chords, each marked with a '3' and a bracket. The chords are: G4-A4-B4 (first), G4-A4-B4-C#4 (second), and G4-A4-B4-C#4 (third).

3

4

10

Detailed description: This musical notation continues the piece. It starts with a measure containing a triplet of chords, each marked with a '3' and a bracket. The chords are: G4-A4-B4 (first), G4-A4-B4-C#4 (second), and G4-A4-B4-C#4 (third). This is followed by a measure with a whole note chord and a fermata above it. The number '4' is written at the beginning of the first measure, and '10' is written at the end of the second measure.



# FX 1 (Rain)

♩ = 64,000000

10

Solo

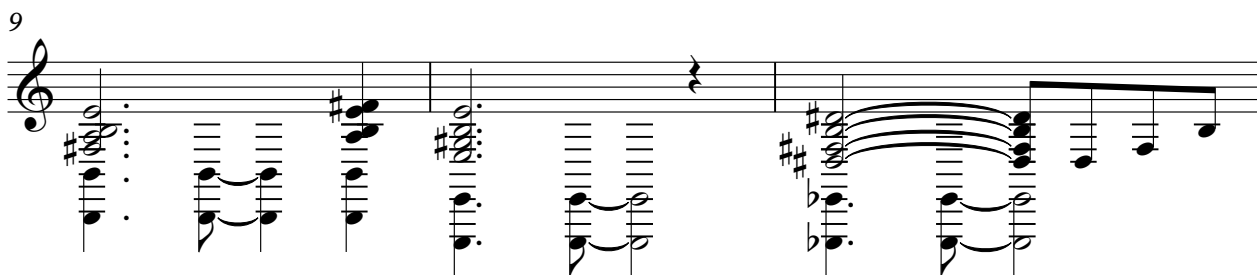
♩ = 64,000000



5



9



12

