

MXPX - I'm Okay, You're Okay

♩ = 175,000076

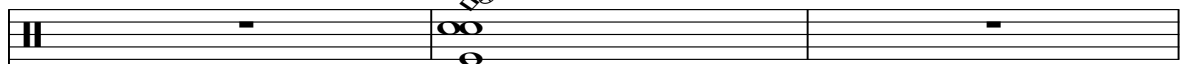
guitar



The guitar staff is in 4/4 time. It features a rhythmic accompaniment of eighth notes. The notes are organized into chords, primarily triads and dyads. The key signature has one flat (Bb). The first measure contains a Bb2, D3, F3 triad. The second measure contains a Bb2, D3, F3 triad. The third measure contains a Bb2, D3, F3 triad. The fourth measure contains a Bb2, D3, F3 triad. The fifth measure contains a Bb2, D3, F3 triad. The sixth measure contains a Bb2, D3, F3 triad. The seventh measure contains a Bb2, D3, F3 triad. The eighth measure contains a Bb2, D3, F3 triad. The ninth measure contains a Bb2, D3, F3 triad. The tenth measure contains a Bb2, D3, F3 triad. The eleventh measure contains a Bb2, D3, F3 triad. The twelfth measure contains a Bb2, D3, F3 triad.

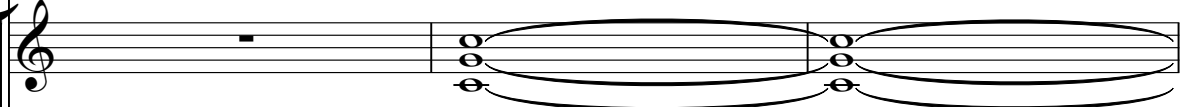
4

drums




The drums staff shows a single cymbal hit in the second measure, indicated by a 'cym' symbol above the staff.

guitar



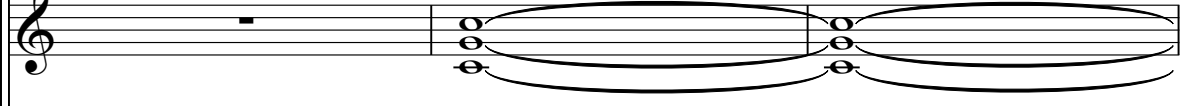
The guitar staff shows sustained chords in the second and third measures, indicated by long horizontal lines above the notes.

guitar



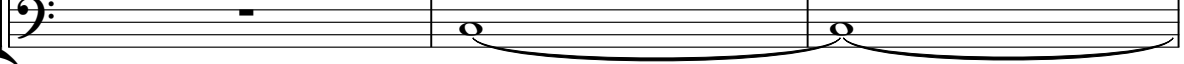
The guitar staff continues the rhythmic accompaniment from the first system, with eighth notes and chords.

guitar



The guitar staff shows sustained chords in the second and third measures, indicated by long horizontal lines above the notes.

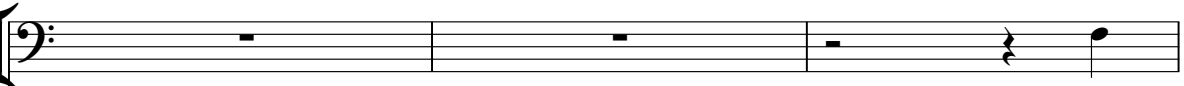
bass



The bass staff shows sustained notes in the second and third measures, indicated by long horizontal lines above the notes.

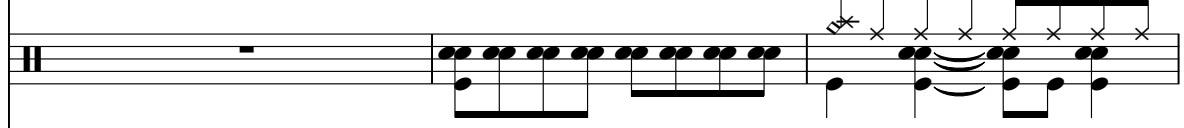
7

vocals




The vocals staff shows a single note in the third measure, indicated by a note head and stem.

drums




The drums staff shows a complex rhythmic pattern in the second, third, and fourth measures, including eighth notes and cymbal hits.

guitar




The guitar staff continues the rhythmic accompaniment from the first system, with eighth notes and chords.

guitar




The guitar staff continues the rhythmic accompaniment from the first system, with eighth notes and chords.

guitar



The guitar staff continues the rhythmic accompaniment from the first system, with eighth notes and chords.

bass



The bass staff continues the rhythmic accompaniment from the first system, with eighth notes and chords.

2

10

vocals

drums

guitar

guitar

bass

Detailed description: This musical score covers measures 10, 11, and 12. The vocal line (bass clef) begins in measure 10 with a half note G2, followed by quarter notes A2, B2, and C3. Measure 11 contains a whole rest, and measure 12 starts with a quarter note D3. The drum line (snare drum) features a consistent pattern of eighth notes with 'x' marks above them, indicating a specific drum sound. The two guitar lines (treble clef) play a series of chords, primarily triads, with some notes beamed together. The bass line (bass clef) plays a steady eighth-note pattern, starting on G1 and moving up stepwise.

13

vocals

drums

guitar

guitar

bass

Detailed description: This musical score covers measures 13, 14, and 15. The vocal line (bass clef) has a whole rest in measure 13, followed by whole rests in measures 14 and 15. The drum line (snare drum) continues with the same eighth-note pattern as in the previous section. The two guitar lines (treble clef) play a rhythmic pattern of eighth notes with accents, alternating between two chords. The bass line (bass clef) continues with the eighth-note pattern, maintaining the same pitch as in the previous section.

15

vocals
drums
guitar
guitar
bass

Detailed description: This system of musical notation covers measures 15, 16, and 17. The vocal line (bass clef) is mostly silent, with a few notes at the end of measure 17. The drums (snare drum) play a consistent pattern of eighth notes with a hi-hat. The two guitar staves (treble clef) play a rhythmic accompaniment of eighth notes with a bass line. The bass line (bass clef) plays a steady eighth-note pattern. The key signature has one flat (Bb).

18

vocals
drums
guitar
guitar
bass

Detailed description: This system of musical notation covers measures 18, 19, and 20. The vocal line (bass clef) features a melodic line with eighth and quarter notes. The drums (snare drum) continue with the eighth-note pattern. The two guitar staves (treble clef) play a rhythmic accompaniment of eighth notes with a bass line. The bass line (bass clef) plays a steady eighth-note pattern. The key signature has one flat (Bb).

21

vocals

drums

guitar

guitar

bass

Detailed description: This block contains the musical notation for measures 21 and 22. It features five staves: vocals, drums, and two guitars, plus a bass line. The key signature has one flat (B-flat). The vocal line starts with a quarter note G2, followed by a quarter rest, and then a whole rest. The drum line shows a consistent pattern of eighth notes on the snare and bass drums. The guitar parts consist of a steady eighth-note strumming pattern. The bass line is a simple eighth-note walk.

23

drums

guitar

guitar

bass

Detailed description: This block contains the musical notation for measures 23 and 24. It features four staves: drums, two guitars, and a bass line. The key signature has one flat (B-flat). The drum line continues the pattern from the previous measures but includes a more complex snare pattern in measure 24. The guitar parts continue with the eighth-note strumming pattern. The bass line remains a simple eighth-note walk.

25

vocals

vocals

drums

guitar

guitar

bass

Detailed description: This system of music covers measures 25, 26, and 27. The vocal part (top two staves) features a melody in the upper staff and a sustained bass line in the lower staff. The drums (third staff) play a consistent rhythmic pattern. The guitar (fourth and fifth staves) consists of two parts: a treble staff with chords and a bass staff with a steady eighth-note accompaniment. The bass (sixth staff) continues the eighth-note accompaniment.

28

vocals

vocals

drums

guitar

guitar

bass

Detailed description: This system of music covers measures 28, 29, and 30. The vocal part (top two staves) has a melody in the upper staff and a sustained bass line in the lower staff. The drums (third staff) maintain the same rhythmic pattern. The guitar (fourth and fifth staves) continues with chords in the treble and eighth-note accompaniment in the bass. The bass (sixth staff) continues the eighth-note accompaniment.

31

vocals

vocals

drums

guitar

guitar

bass

Detailed description: This system of musical notation covers measures 31, 32, and 33. The vocal parts are in the top two staves, both using a bass clef. The first vocal line has a few notes at the end of measure 33. The second vocal line has a long, sustained note across measures 31 and 32. The drums are in the third staff, showing a consistent rhythmic pattern with snare and bass drum hits. The two guitar staves (treble clef) play a rhythmic accompaniment with chords. The bass staff (bass clef) plays a steady eighth-note line. Measure 33 features a significant change in the guitar and bass parts, with long, sustained notes and a shift in the bass line.

34

vocals

drums

guitar

guitar

bass

Detailed description: This system of musical notation covers measures 34, 35, and 36. The vocal part in the top staff (bass clef) has a melodic line with a flat sign in measure 34. The drums in the second staff continue with the same rhythmic pattern. The two guitar staves (treble clef) play a rhythmic accompaniment with chords, featuring a key signature change to one flat in measure 34. The bass staff (bass clef) plays a steady eighth-note line. Measure 36 features a significant change in the guitar and bass parts, with long, sustained notes and a shift in the bass line.

37

vocals

drums

guitar

guitar

bass

Detailed description: This block contains the musical notation for measures 37 and 38. The score is arranged in five staves. The top staff is for vocals, showing a whole rest in both measures. The second staff is for drums, featuring a consistent rhythmic pattern of eighth notes with accents. The third and fourth staves are for guitars, both playing a similar rhythmic pattern of eighth notes with accents. The bottom staff is for bass, playing a steady eighth-note line. The key signature has one flat (B-flat).

39

vocals

drums

guitar

guitar

bass

Detailed description: This block contains the musical notation for measures 39 and 40. The score is arranged in five staves. The top staff is for vocals, showing a whole rest in measure 39 and a quarter note followed by an eighth note in measure 40. The second staff is for drums, featuring a consistent rhythmic pattern of eighth notes with accents, including some cymbal hits marked with 'x'. The third and fourth staves are for guitars, both playing a similar rhythmic pattern of eighth notes with accents. The bottom staff is for bass, playing a steady eighth-note line. The key signature has one flat (B-flat).

42

vocals
drums
guitar
guitar
bass

This system contains measures 42, 43, and 44. The vocal line (bass clef) features a melodic line with eighth and quarter notes. The drums (snare drum) play a consistent eighth-note pattern. The two guitar staves (treble clef) play a rhythmic accompaniment with eighth notes and chords. The bass line (bass clef) plays a steady eighth-note pattern.

45

vocals
drums
guitar
guitar
bass

This system contains measures 45 and 46. The vocal line (bass clef) has a few notes in measure 45 and is silent in measure 46. The drums (snare drum) continue with the eighth-note pattern. The two guitar staves (treble clef) play a rhythmic accompaniment with eighth notes and chords. The bass line (bass clef) continues with the eighth-note pattern.

47

drums
guitar
guitar
bass

This system contains measures 47 and 48. The drums (snare drum) play the eighth-note pattern, with a more complex rhythmic figure in measure 48. The two guitar staves (treble clef) play the rhythmic accompaniment. The bass line (bass clef) continues with the eighth-note pattern.

49

vocals

vocals

drums

guitar

guitar

bass

Detailed description: This system of musical notation covers measures 49, 50, and 51. The vocal part consists of two staves in bass clef. The upper staff contains a melodic line with eighth and quarter notes, including a flat sign in measure 50. The lower staff contains sustained bass notes, with a double bar line in measure 50. The drum part is on a single staff with a drum set icon, showing a consistent rhythmic pattern of eighth notes. The guitar part is split into two staves in treble clef, both playing a steady eighth-note accompaniment. The bass part is on a single staff in bass clef, playing a steady eighth-note line.

52

vocals

vocals

drums

guitar

guitar

bass

Detailed description: This system of musical notation covers measures 52, 53, and 54. The vocal part consists of two staves in bass clef. The upper staff has a rest in measure 52, followed by a melodic line in measures 53 and 54. The lower staff contains sustained bass notes, with a double bar line in measure 53. The drum part is on a single staff with a drum set icon, showing a consistent rhythmic pattern of eighth notes. The guitar part is split into two staves in treble clef, both playing a steady eighth-note accompaniment. The bass part is on a single staff in bass clef, playing a steady eighth-note line.

55

vocals

vocals

drums

guitar

guitar

bass

58

vocals

vocals

drums

guitar

guitar

bass

61

vocals

vocals

drums

guitar

guitar

bass

Detailed description: This system of musical notation covers measures 61, 62, and 63. The vocal parts are in the top two staves, both using a bass clef. The top staff contains a melodic line with eighth and quarter notes, while the bottom staff features a sustained bass line with long horizontal lines. The drum part is on a single staff with a double bar line, showing a consistent rhythmic pattern of eighth notes. The two guitar parts are in the middle staves, both using a treble clef and a key signature of one flat. They play a steady accompaniment of chords. The bass part is in the bottom staff, using a bass clef, and plays a simple eighth-note line.

64

vocals

vocals

drums

guitar

guitar

bass

Detailed description: This system of musical notation covers measures 64, 65, and 66. The vocal parts are in the top two staves, both using a bass clef. The top staff has a melodic line starting in measure 65, while the bottom staff has a sustained bass line. The drum part is on a single staff with a double bar line, showing a rhythmic pattern that changes in measure 65. The two guitar parts are in the middle staves, both using a treble clef and a key signature of one flat. They play a steady accompaniment of chords, with some measures featuring long horizontal lines. The bass part is in the bottom staff, using a bass clef, and plays a simple eighth-note line.

67

vocals

drums

guitar

guitar

bass

70

vocals

drums

guitar

guitar

bass

73

vocals

drums

guitar

guitar

bass

Detailed description: This system contains measures 73, 74, and 75. The vocal line starts with a quarter note G2, followed by eighth notes A2, B2, C3, D3, E3, and a dotted quarter note F3. The drums play a steady eighth-note pattern of 'x' marks. The guitar parts feature a series of chords with a melodic line on top. The bass line consists of quarter notes: G1, F1, E1, D1, C1, B0, A0, G0, F0, E0, D0, C0, B0, A0, G0.

76

vocals

drums

guitar

guitar

bass

Detailed description: This system contains measures 76, 77, and 78. The vocal line begins with a quarter note G#2, followed by quarter notes A2, B2, C3, D3, E3, and a quarter note F3. The drums continue with the eighth-note 'x' pattern. The guitar parts show a progression of chords with a melodic line. The bass line consists of quarter notes: G1, F1, E1, D1, C1, B0, A0, G0, F0, E0, D0, C0, B0, A0, G0.

79

vocals

vocals

drums

guitar

guitar

bass

Detailed description: This system of music covers measures 79, 80, and 81. The vocal parts are in the top two staves, both using a bass clef. The top staff has a melodic line starting in measure 79, while the bottom staff has a sustained note in measure 80. The drums are in the third staff, showing a consistent rhythmic pattern with 'x' marks for cymbals. The two guitar staves (treble clef) play a complex, syncopated chordal accompaniment. The bass line (bass clef) provides a steady eighth-note accompaniment.

82

vocals

vocals

drums

guitar

guitar

bass

Detailed description: This system of music covers measures 82, 83, and 84. The vocal parts continue in the top two staves. The top staff has a melodic line with a flat, and the bottom staff has a sustained note. The drums maintain their rhythmic pattern. The two guitar staves continue with their complex accompaniment. The bass line continues with its steady eighth-note accompaniment.

85

vocals

vocals

drums

guitar

guitar

bass

Detailed description: This system covers measures 85, 86, and 87. The top two staves are for vocals, with the upper staff in bass clef and the lower staff in bass clef. The vocal line in measure 85 consists of eighth notes: G2, A2, B2, C3, D3, E3, F3, G3. In measure 86, it continues with G3, A3, B3, C4, D4, E4, F4, G4. In measure 87, it has a half note G4 followed by a whole rest. The lower vocal staff has a whole note chord of G2, B1, D2 in measure 85, a whole note chord of G2, B1, D2 in measure 86, and a whole note chord of G2, B1, D2 in measure 87. The drums staff shows a consistent pattern of eighth notes with asterisks, likely representing cymbals, over a bass line of eighth notes. The first guitar staff has a series of chords: G2, B2, D2; G2, B2, D2; G2, B2, D2; G2, B2, D2; G2, B2, D2; G2, B2, D2; G2, B2, D2; G2, B2, D2. The second guitar staff has a series of chords: G2, B2, D2; G2, B2, D2; G2, B2, D2; G2, B2, D2; G2, B2, D2; G2, B2, D2; G2, B2, D2; G2, B2, D2. The bass staff has a series of eighth notes: G2, A2, B2, C3, D3, E3, F3, G3; G3, A3, B3, C4, D4, E4, F4, G4; G4, A4, B4, C5, D5, E5, F5, G5.

88

vocals

vocals

drums

guitar

guitar

bass

Detailed description: This system covers measures 88, 89, and 90. The top two staves are for vocals, with the upper staff in bass clef and the lower staff in bass clef. The vocal line in measure 88 has a whole rest. In measure 89, it consists of eighth notes: G2, A2, B2, C3, D3, E3, F3, G3. In measure 90, it has a half note G3 followed by a whole rest. The lower vocal staff has a whole note chord of G2, B1, D2 in measure 88, a whole note chord of G2, B1, D2 in measure 89, and a whole note chord of G2, B1, D2 in measure 90. The drums staff shows a consistent pattern of eighth notes with asterisks, likely representing cymbals, over a bass line of eighth notes. The first guitar staff has a series of chords: G2, B2, D2; G2, B2, D2; G2, B2, D2; G2, B2, D2; G2, B2, D2; G2, B2, D2; G2, B2, D2; G2, B2, D2. The second guitar staff has a series of chords: G2, B2, D2; G2, B2, D2; G2, B2, D2; G2, B2, D2; G2, B2, D2; G2, B2, D2; G2, B2, D2; G2, B2, D2. The bass staff has a series of eighth notes: G2, A2, B2, C3, D3, E3, F3, G3; G3, A3, B3, C4, D4, E4, F4, G4; G4, A4, B4, C5, D5, E5, F5, G5.

91

vocals

vocals

drums

guitar

guitar

bass

Detailed description: This system of music covers measures 91, 92, and 93. The top two staves are for vocals. The upper staff shows a vocal line with a melodic phrase in measure 91, a rest in measure 92, and a continuation in measure 93. The lower staff shows a sustained bass note in measure 91, a rest in measure 92, and a sustained bass note in measure 93. The drums, guitar, and bass parts are consistent across all three measures, featuring a steady eighth-note rhythm.

94

vocals

vocals

drums

guitar

guitar

bass

Detailed description: This system of music covers measures 94, 95, and 96. The top two staves are for vocals. The upper staff shows a vocal line with a melodic phrase in measure 94, a rest in measure 95, and a rest in measure 96. The lower staff shows a sustained bass note in measure 94, a sustained bass note in measure 95, and a sustained bass note in measure 96. The drums, guitar, and bass parts are consistent across all three measures, featuring a steady eighth-note rhythm.

97

vocals

vocals

drums

guitar

guitar

guitar

bass

100

vocals

vocals

drums

guitar

guitar

guitar

bass

103

vocals

vocals

drums

guitar

guitar

guitar

bass

Detailed description: This system of musical notation covers measures 103 to 105. It features two vocal staves in bass clef. The top vocal staff has a whole rest in measure 103, followed by a melodic line in measures 104 and 105. The bottom vocal staff has a long note in measure 103, a whole rest in measure 104, and another long note in measure 105. The drums part shows a consistent rhythmic pattern of eighth notes with accents. The guitar parts include a lead line in the top staff, a rhythm line in the middle staff, and a chordal accompaniment in the bottom staff. The bass line consists of a steady eighth-note pattern.

106

vocals

vocals

drums

guitar

guitar

guitar

bass

Detailed description: This system of musical notation covers measures 106 to 108. The top vocal staff has a melodic line in measure 106, a whole rest in measure 107, and a melodic line in measure 108. The bottom vocal staff has a long note in measure 106, a whole rest in measure 107, and another long note in measure 108. The drums part continues with the same rhythmic pattern. The guitar parts include a lead line in the top staff, a rhythm line in the middle staff, and a chordal accompaniment in the bottom staff. The bass line continues with the steady eighth-note pattern.

109

vocals

vocals

drums

guitar

guitar

guitar

bass

Detailed description: This block contains the musical notation for measures 109 through 111. It features six staves: two for vocals, drums, and three for guitar and bass. The top two vocal staves show a vocal line with eighth notes and a sustained bass line with long notes. The drums staff shows a consistent rhythmic pattern of eighth notes. The three guitar and bass staves show various accompaniment patterns, including chords and moving lines.

112

vocals

drums

guitar

guitar

guitar

bass

Detailed description: This block contains the musical notation for measures 112 through 115. It features six staves: vocals, drums, and three guitar and bass. In measure 112, the vocal line is silent. The drums continue with a rhythmic pattern. The guitar and bass staves show more complex accompaniment, including chords and moving lines, with some measures featuring sustained notes and ties.

MXPX - I'm Okay, You're Okay

vocals

♩ = 175,000076

8

13

20

27

33

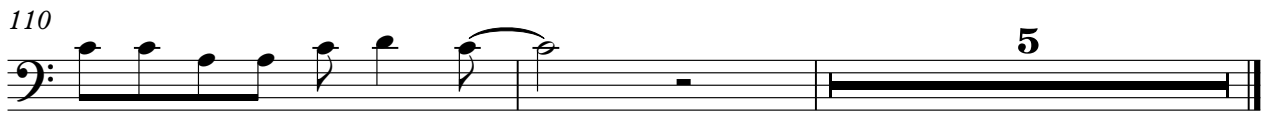
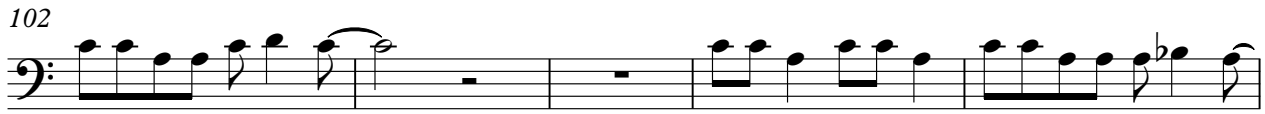
38

45

52

57

62



MXPX - I'm Okay, You're Okay

vocals

♩ = 175,000076

24

Four measures of music in bass clef, 4/4 time. Each measure contains a pair of eighth notes beamed together with a slur above them. The notes are G2, F2, E2, D2, C2, B1, A1, G1. A bar line is present after the second measure.

32

16

Four measures of music in bass clef, 4/4 time. Each measure contains a pair of eighth notes beamed together with a slur above them. The notes are G2, F2, E2, D2, C2, B1, A1, G1. A bar line is present after the second measure.

55

Four measures of music in bass clef, 4/4 time. Each measure contains a pair of eighth notes beamed together with a slur above them. The notes are G2, F2, E2, D2, C2, B1, A1, G1.

64

16

Four measures of music in bass clef, 4/4 time. Each measure contains a pair of eighth notes beamed together with a slur above them. The notes are G2, F2, E2, D2, C2, B1, A1, G1. A bar line is present after the second measure.

87

Four measures of music in bass clef, 4/4 time. Each measure contains a pair of eighth notes beamed together with a slur above them. The notes are G2, F2, E2, D2, C2, B1, A1, G1.

96

Four measures of music in bass clef, 4/4 time. Each measure contains a pair of eighth notes beamed together with a slur above them. The notes are G2, F2, E2, D2, C2, B1, A1, G1.

105

4

Four measures of music in bass clef, 4/4 time. Each measure contains a pair of eighth notes beamed together with a slur above them. The notes are G2, F2, E2, D2, C2, B1, A1, G1. A bar line is present after the third measure.

MXPX - I'm Okay, You're Okay

drums

♩ = 175,000076

4

2

10

14

18

22

25

28

31

35

39

V.S.

43

47

50

53

56

59

62

66

70

74

78

82

85

88

91

94

97

100

103

106

V.S.

4

drums

109

Musical notation for drums, measures 109-111. The notation is on a five-line staff with a double bar line at the beginning. It features a consistent rhythmic pattern of eighth notes with stems pointing up and down, and a series of eighth notes with stems pointing down. The pattern repeats every two measures.

112

Musical notation for drums, measures 112-113. The notation is on a five-line staff with a double bar line at the beginning. It features a consistent rhythmic pattern of eighth notes with stems pointing up and down, and a series of eighth notes with stems pointing down. The pattern repeats every two measures. The notation ends with a double bar line and a large number '3' above the staff.

MXPX - I'm Okay, You're Okay

guitar

♩ = 175,000076

4

10

14

17

21

24

29

35

39

43

V.S.

46



49



55



61



67



74



80



85



91



97



103



109



112



guitar

MXPX - I'm Okay, You're Okay

♩ = 175,000076

5

9 **88**

100

104

108

111 **4**

MXPX - I'm Okay, You're Okay

guitar

♩ = 175,000076

4

10

14

17

21

24

28

32

37

40

V.S.

45



48



52



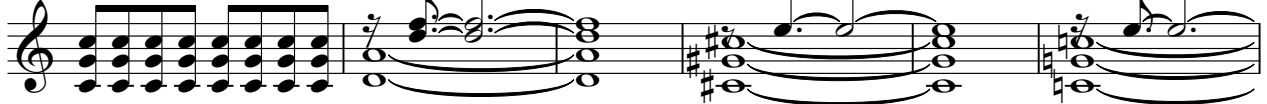
56



60



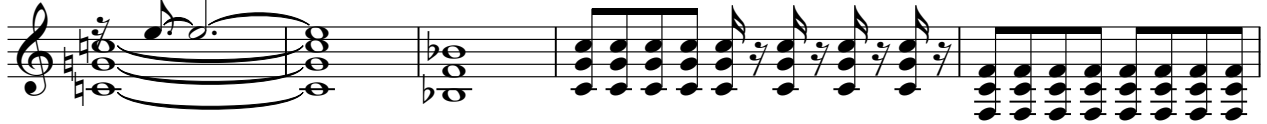
64



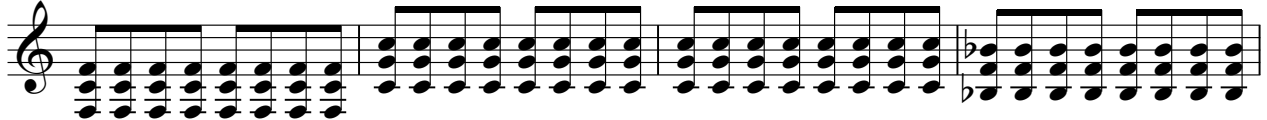
70



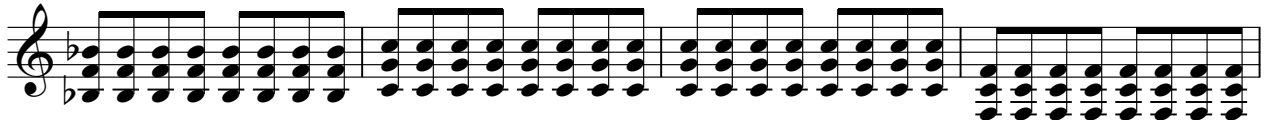
77



82



86



90

94

98

102

106

110

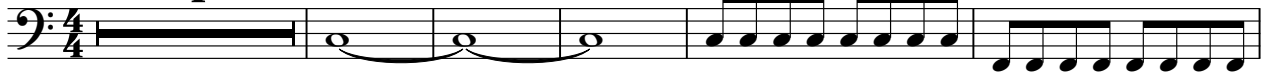
112

MXPX - I'm Okay, You're Okay

bass

♩ = 175,000076

4



10



14



18



22



26



30



36



41



45



V.S.

2

bass

49



53



57



61



65



71



77



82



86



90



94



98



102



106



110



112

