

Blue Eyes

King Diamond
The Puppet Master

Words & Music by King Diamond

Standard tuning

♩ = 148

Start

E-Gt

T
A
B

First verse

9

T
A
B

Main riff

19

T
A
B

Second verse

25

T
A
B

29

T
A
B

2 2 9 9 9 9 (9) 10 10 10 12 12 5 5 12 12 12 12 (12) 13 13 13 12
0 0 7 7 9 9 (9) 10 10 10 12 12 3 3 10 10 12 12 (12) 13 13 13 12

33

T
A
B

5 5 12 12 12 12 (12) 13 13 13 15 15 2 2 9 9 9 9 (9) 10 10 10 9
3 3 10 10 12 12 (12) 13 13 13 15 15 0 0 7 7 9 9 (9) 10 10 10 9

37

Pre-chorus

T
A
B

2 2 9 9 9 9 (9) 10 10 10 12 12 5 8 7 8 4 5 8
0 0 7 7 9 9 (9) 10 10 10 12 12 3 6 5 6 2 3 6

42

T
A
B

7 5 5 8 7 8 4 5 3 5 2
5 3 6 5 6 2 3 5 4

Chorus

47

T
A
B

3 3 3 6 6 6 5 5 5 6 6 2 2

49

T
A
B

3 3 3 6 6 6 5 3 3 3 6 6 6

52

T
A
B

5 5 | 5 6 6 2 2 | 3 3 | 3 6 6 6 | 5

55

Break

T
A
B

6 7 | 6 7 | 6

Third verse

63

T
A
B

2 0 | 7 5 | 5 3 | 3 1 | 2 0 | 7 5 | 5 3

First solo

70

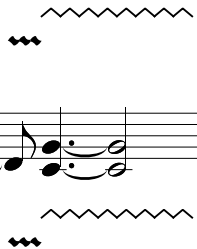
T
A
B

3 1 | 2 0 | 7 5 | 2 0 | 7 5 | (7) (5) | 12 | (12)

78

T
A
B

(19) 12 | (19) (12) | (17) 10 | (15) 8 | (17) 10 | (17) (10) | (15) 8 | (15) (8) | 7 7 | 9 9 | 7 7 | 14 | (14) | 7 | (7) 5 | 3 5



Fourth verse

83

TAB (5)-5-3 | 5-5-3 | 12-12-12-12 | (12)-13-13-13-12 | 5-5-3 | 12-12-12-12

Second solo

87

TAB (12)-13-13-13-15-15 | 8-9 | 10-12-10-11 | (10)-12-10-12-10 | (11)-12-11-12-11

Third solo

90

TAB 12-12 | (12)-13-15-17 | (17)-15-13-15-13-12 | 10-12-14 | (14)-12-10-12-10-9 | 5-8 | 7-8-4 | 5-8 | 3-6 | 6-2 | 3-6

Chorus

100

TAB 3-3 | 3-6-6-6 | 5-5 | 5-6-6-2-2

102

TAB
3 3 3 6 6 6 5 3 3 3 6 6 6

105

TAB
5 5 5 6 6 2 2 3 3 3 6 6 6 5

~~~~~ Fifth verse ~~~~~

108

TAB  
6 7 6 7 6 7 5 3 1 2 7 5

Fourth solo

114

TAB  
5 3 0 2 3 0 2 3 5 7 5 (7) 5 3 (5) 5 3 1

119

TAB  
(3) 3 (1) 1 2 0 7 5 5 (5) 5 3 3 1 (3) 3 1

Sixth verse

124

TAB  
0 2 3 0 2 3 5 7 5 (7) 5 7 5 5 5 5 5 5 5 5 3 3 3 3 3 3 3

127

TAB

3-3 2-2 7-7 5-5

1-1 1-1 1-1 1-1 0-0 0-0 0-0 0-0 5-5 5-5 5-5 5-5 3-3 3-3 3-3 3-3

131

Seventh verse

TAB

3-3 0-2-3 0-2-3 5-7 (7) 5 (5) 5 3

1-1 1-1 1-1 1-1 1-1 1-1 0 2 3 0 2 3 5 7 5 (7) 5 (5) 5 3 1

135

TAB

(3) 3 2 7 5 (5) 5 3 (3) 3

(3) 3 0 7 5 (5) 5 3 1 (3) 3

140

Eight verse

TAB

0-2-3 0-2-3 5-7 (7) 7 5-5 5-5 5-5 5-5 5-5 5-5 5-5 5-5 5-5 3-3 3-3 3-3 3-3 3-3 3-3

0 2 3 0 2 3 5 7 5 (7) 7 5 5 5 5 5 5 5 5 5 5 5 5 3 3 3 3 3 3 3 3

143

TAB

3-3 2-2 7-7 5-5

1-1 1-1 1-1 1-1 1-1 1-1 0-0 0-0 0-0 0-0 5-5 5-5 5-5 5-5 3-3 3-3 3-3 3-3

147

TAB

3-3 0-2-3 0-2-3 5-7 (7) 0-2-3 0-2-3 5-7

1-1 1-1 1-1 1-1 1-1 1-1 0 2 3 0 2 3 5 7 5 (7) 0 2 3 0 2 3 5 7

151

The image shows a musical score for guitar, consisting of two staves. The top staff is a treble clef staff with a melody. The bottom staff is a guitar tablature staff. The tablature is labeled 'T A B' on the left. The fret numbers are: (7) (5) | 0-2-3 | 0-2-3-5-7 | (7) (5) | (7) (5) | (7) (5). The melody starts with a quarter note G4, followed by a quarter rest, then a quarter note A4, and a quarter note B4. The next measure has a quarter note C5, a quarter note D5, a quarter note E5, and a quarter note F5. The final measure has a quarter note G5, a quarter note F5, a quarter note E5, and a quarter note D5.