

Marcy Playground - Sex and Candy

♩ = 80,000000

drums

guitar

guitar

vocals

bass

3

drums

guitar

guitar

vocals

bass

2

5

drums

guitar

guitar

vocals

bass

Detailed description: This block contains the musical notation for measures 2 through 5. It features five staves: drums, guitar, guitar, vocals, and bass. The drums part shows a consistent pattern of eighth notes. The guitar parts consist of chords and melodic lines. The vocal line has a few notes with rests. The bass line provides a steady accompaniment.

7

drums

guitar

guitar

vocals

bass

Detailed description: This block contains the musical notation for measures 7 through 10. It features five staves: drums, guitar, guitar, vocals, and bass. The drums part continues with a similar pattern. The guitar parts show more complex chordal structures. The vocal line has a few notes with rests. The bass line continues its accompaniment.

9

drums

guitar

guitar

vocals

bass

Detailed description: This block contains the musical notation for measures 9 and 10. It features five staves: drums, guitar (top), guitar (middle), vocals, and bass. The drums part shows a pattern of eighth notes and rests. The guitar parts consist of complex chordal and melodic lines with many accidentals. The vocal line has a melodic contour with some rests. The bass line provides a simple harmonic foundation with eighth notes and rests.

11

drums

guitar

guitar

vocals

bass

Detailed description: This block contains the musical notation for measures 11 and 12. It features five staves: drums, guitar (top), guitar (middle), vocals, and bass. The drums part continues with a similar pattern of eighth notes and rests. The guitar parts continue with complex chordal and melodic lines. The vocal line continues its melodic contour. The bass line continues its simple harmonic foundation.

13

drums

guitar

guitar

vocals

bass

Detailed description: This block contains the musical notation for measures 13 and 14. It features five staves: drums, guitar, guitar, vocals, and bass. The drums part shows a complex pattern with various note values and rests. The two guitar staves contain intricate chordal and melodic lines with many accidentals and ties. The vocal staff has a melodic line with some accidentals. The bass staff provides a simple harmonic foundation with a few notes and rests.

15

drums

guitar

guitar

vocals

bass

Detailed description: This block contains the musical notation for measures 15 and 16. It features five staves: drums, guitar, guitar, vocals, and bass. The drums part continues with a similar pattern to the previous measures. The two guitar staves have dense chordal textures with many notes and ties. The vocal staff has a melodic line with some accidentals. The bass staff provides a simple harmonic foundation with a few notes and rests.

17

drums

guitar

guitar

vocals

bass

Detailed description: This musical score block covers measures 17 and 18. It features five staves: drums, two guitars, vocals, and bass. The drums part shows a consistent pattern of eighth notes with 'x' marks above them, indicating muted notes. The guitar parts consist of complex chordal textures with many beamed notes and some bends. The vocal line has a melodic contour with some rests. The bass line provides a steady accompaniment with eighth notes.

19

drums

guitar

guitar

vocals

bass

Detailed description: This musical score block covers measures 19 and 20. It features five staves: drums, two guitars, vocals, and bass. The drums part continues with eighth notes and includes some 'x' marks. The guitar parts are highly active, with dense chordal patterns and many beamed notes. The vocal line has a melodic contour with some rests. The bass line provides a steady accompaniment with eighth notes.

22

drums

guitar

guitar

vocals

bass

Detailed description: This musical score covers measures 22 to 25. The drums part features a consistent pattern of eighth notes on the snare and bass drums. The guitar parts consist of two staves, each playing a complex, rhythmic pattern with many beamed notes and some accidentals. The vocal line is a single staff with a melodic line that includes a triplet in measure 25. The bass line provides a simple, steady accompaniment with quarter and eighth notes.

24

drums

guitar

guitar

vocals

bass

Detailed description: This musical score covers measures 24 to 27. The drums part continues with the same eighth-note pattern. The guitar parts are more intricate, with many beamed sixteenth notes and some accidentals. The vocal line continues the melody from the previous section, ending with a triplet in measure 27. The bass line remains simple, following a similar rhythmic pattern to the previous section.

26

drums

guitar

guitar

vocals

bass

Detailed description: This block contains the musical notation for measures 26 and 27. It features five staves: drums, two guitars, vocals, and bass. The drums part shows a consistent pattern of eighth notes with 'x' marks above them, indicating a specific drum sound. The two guitar parts play a complex, syncopated chordal accompaniment with various accidentals. The vocal line consists of a series of eighth and quarter notes, with some rests. The bass line provides a steady accompaniment with eighth and quarter notes.

28

drums

guitar

guitar

vocals

bass

Detailed description: This block contains the musical notation for measures 28 and 29. It features five staves: drums, two guitars, vocals, and bass. The drums part continues with the eighth-note pattern, ending with a double bar line and repeat dots. The two guitar parts continue their complex accompaniment. The vocal line has a rest in measure 28 and resumes in measure 29. The bass line continues with eighth and quarter notes.

30

drums

guitar

guitar

vocals

bass

Detailed description: This block contains the musical notation for measures 30 and 31. It features five staves: drums, guitar, guitar, vocals, and bass. The drums part shows a consistent pattern of eighth notes with 'x' marks above them, indicating a specific drum sound. The guitar parts consist of complex chordal textures with various articulations like slurs and accents. The vocal line is a simple melody of eighth and quarter notes. The bass line provides a steady accompaniment with quarter notes.

32

drums

guitar

guitar

vocals

bass

Detailed description: This block contains the musical notation for measures 32 and 33. It features five staves: drums, guitar, guitar, vocals, and bass. The drums part continues with the same eighth-note pattern as in the previous block. The guitar parts maintain their complex chordal textures. The vocal line continues with its eighth-note melody. The bass line follows a similar pattern of quarter notes.

34

drums

guitar

guitar

vocals

bass

Detailed description: This system of musical notation covers measures 34 and 35. The drums part features a consistent pattern of eighth notes on the snare and bass drums. The two guitar parts play a complex, syncopated chordal accompaniment with various articulations. The vocal line consists of a melodic sequence of eighth and quarter notes. The bass line provides a steady accompaniment with a mix of eighth and quarter notes.

36

drums

guitar

guitar

vocals

bass

Detailed description: This system of musical notation covers measures 36 and 37. The drums part continues with a similar pattern to the previous system. The guitar parts feature more intricate chordal textures and some melodic lines. The vocal line has a brief rest in measure 36 before resuming in measure 37. The bass line maintains a consistent rhythmic accompaniment.

38

drums

guitar

guitar

vocals

bass

40

drums

guitar

guitar

vocals

bass

43

drums

guitar

guitar

vocals

bass

Detailed description: This block contains the musical notation for measures 43 and 44. It features five staves: drums, two guitars, vocals, and bass. The drums part shows a consistent pattern of eighth notes with 'x' marks above them, indicating a specific drum sound. The two guitar parts are highly active, with the upper guitar playing a complex melodic line and the lower guitar providing a rhythmic accompaniment. The vocal line consists of a series of eighth and quarter notes, and the bass line provides a steady, low-frequency accompaniment.

45

drums

guitar

guitar

vocals

bass

Detailed description: This block contains the musical notation for measures 45 and 46. It features five staves: drums, two guitars, vocals, and bass. The drums part continues the pattern from the previous block. The two guitar parts maintain their respective melodic and rhythmic roles. The vocal line continues with similar rhythmic patterns, and the bass line remains steady.

47

drums

guitar

guitar

vocals

bass

Detailed description: This system of music covers measures 47 to 50. The drums part features a consistent pattern of eighth notes on the snare and bass drums. The guitar parts consist of complex chordal textures with many beamed notes. The vocal line has a melodic contour with a triplet of eighth notes in measure 49. The bass line provides a steady accompaniment with a mix of eighth and quarter notes.

49

drums

guitar

guitar

vocals

bass

Detailed description: This system of music covers measures 49 to 52. The drums part continues with the same rhythmic pattern. The guitar parts are highly active with many beamed notes and some melodic lines. The vocal line has a melodic contour with a triplet of eighth notes in measure 51. The bass line provides a steady accompaniment with a mix of eighth and quarter notes.

51

drums

guitar

guitar

vocals

bass

Detailed description: This system contains measures 51 and 52. The drums part features a consistent pattern of eighth notes on the snare and bass drum. The guitar parts consist of a rhythmic accompaniment with chords and single notes. The vocal line has a melodic phrase that spans across the two measures. The bass line provides a steady accompaniment with a mix of eighth and quarter notes.

53

drums

guitar

guitar

vocals

bass

Detailed description: This system contains measures 53 and 54. The drums part continues with the same rhythmic pattern. The guitar parts show a continuation of the accompaniment, with some changes in chord voicings. The vocal line concludes its phrase in measure 54. The bass line remains consistent with the previous measures.

55

drums

guitar

guitar

bass

Detailed description: This system contains measures 55 and 56. The drums part has a more active pattern in measure 55, followed by a rest in measure 56. The guitar parts feature a melodic line in measure 55 that is held over into measure 56. The bass line continues with a steady accompaniment.

Marcy Playground - Sex and Candy

drums

♩ = 80,000000

4

7

11

15

19

23

26

30

35

V.S.

2

drums

39

Musical notation for drums, measures 39-42. The notation consists of two staves. The top staff uses 'x' marks to indicate drum hits, with beams connecting them to show patterns. The bottom staff uses solid black dots to indicate the pitch of the drum hits. Measure 39 shows a complex pattern of hits. Measure 40 has a similar pattern. Measure 41 continues the pattern. Measure 42 shows a different pattern with more hits.

43

Musical notation for drums, measures 43-47. The notation consists of two staves. The top staff uses 'x' marks to indicate drum hits, with beams connecting them to show patterns. The bottom staff uses solid black dots to indicate the pitch of the drum hits. Measure 43 shows a pattern of hits. Measure 44 has a similar pattern. Measure 45 continues the pattern. Measure 46 shows a different pattern. Measure 47 shows a pattern of hits.

48

Musical notation for drums, measures 48-51. The notation consists of two staves. The top staff uses 'x' marks to indicate drum hits, with beams connecting them to show patterns. The bottom staff uses solid black dots to indicate the pitch of the drum hits. Measure 48 shows a pattern of hits. Measure 49 has a similar pattern. Measure 50 continues the pattern. Measure 51 shows a different pattern.

52

Musical notation for drums, measures 52-53. The notation consists of two staves. The top staff uses 'x' marks to indicate drum hits, with beams connecting them to show patterns. The bottom staff uses solid black dots to indicate the pitch of the drum hits. Measure 52 shows a pattern of hits. Measure 53 shows a different pattern.

54

Musical notation for drums, measures 54-55. The notation consists of two staves. The top staff uses 'x' marks to indicate drum hits, with beams connecting them to show patterns. The bottom staff uses solid black dots to indicate the pitch of the drum hits. Measure 54 shows a pattern of hits. Measure 55 shows a pattern of hits, ending with a double bar line and a '2' indicating a second ending.

Marcy Playground - Sex and Candy

guitar

♩ = 80,000000

4

7

10

13

16

19

22

25

28

V.S.

31



34



37



40



43



45



47



50



53



Marcy Playground - Sex and Candy

guitar

♩ = 80,000000

4

7

10

12

15

18

21

24

27

V.S.

30

32

35

38

41

44

47

50

53

Marcy Playground - Sex and Candy

vocals

♩ = 80,000000

4

7

11

15

19

24

27

31

35

V.S.

2

vocals

39



44



48



52



Marcy Playground - Sex and Candy

bass

♩ = 80,000000



6



11



16



21



26



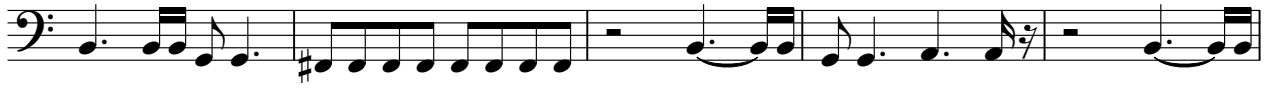
31



36



41



46



V.S.

2

bass

51



54

