

# Mudvayne - Nothing To Gein

♩ = 112,000061

guitar

5

drums

guitar

9

drums

guitar

bass

11

drums

guitar

bass

13

drums

guitar

bass

15

drums

guitar

bass

0 0 0 0 0 0 0 0 | 0 0 0 0 0 0 0 0 | 0 0 0 0 0 0 0 0

2 2 2 2 2 2 2 2 | 2 2 2 2 2 2 2 2 | 2 2 2 2 2 2 2 2

18

drums

guitar

bass

0 0 0 0 0 0 0 0 | 0 0 0 0 0 0 0 0 | 0 0 0 0 0 0 0 0

2 2 2 2 2 2 2 2 | 2 2 2 2 2 2 2 2 | 2 2 2 2 2 2 2 2

21

drums

guitar

bass

0 | 0

2 | 2 4 0 2 2 4 2 2 | 4 0 2 2 2 2 2

4 5 2 2 4 2 2 | 4 5 1 1 1 1 1

24

drums

guitar

bass

2 | 1 0 0 0 0 0 0 | 0 0 0 0 0 0 0 0

1 | 2 5 5 5 5 5 5 | 0 5 4 4 4 4 4 4

26

drums

guitar

bass

28

drums

guitar

bass

30

drums

guitar

bass

31

drums

guitar

bass

32

drums

guitar

bass

Detailed description: This system covers measures 32 to 35. The drums part features a consistent pattern of eighth notes with accents and slurs. The guitar part consists of a single note (open string) for the entire duration. The bass part plays a descending eighth-note line: G2, F2, E2, D2, C2, B1, A1, G1.

33

drums

guitar

bass

Detailed description: This system covers measures 33 to 36. The drums part continues with the same eighth-note pattern. The guitar part remains on a single note. The bass part continues the descending line: G1, F1, E1, D1, C1, B0, A0, G0.

34

drums

guitar

bass

Detailed description: This system covers measures 34 and 35. The drums part has a more complex pattern with many accents and slurs. The guitar part is silent (all zeros). The bass part continues the descending line: G0, F0, E0, D0, C0, B-1, A-1, G-1.

36

drums

guitar

bass

Detailed description: This system covers measures 36 to 39. The drums part has a complex pattern with many accents and slurs. The guitar part is silent (all zeros). The bass part continues the descending line: G-1, F-1, E-1, D-1, C-1, B-2, A-2, G-2.

38

drums

guitar

bass

40

drums

guitar

bass

42

drums

guitar

bass

44

drums

guitar

bass

46

drums

guitar

T  
A 0 0 0 0 0 0 1 0  
B 4 4 4 4 4 4 0 4 2 2 2 2 0 0 4 4

bass

48

drums

guitar

T  
A 0 0 0 0 0 0 0 0 1 0 0 0 0 0  
B 4 4 4 4 4 4 4 4 0 4 2 2 2 2

bass

50

drums

guitar

T  
A 0 0 0 0 0 0 0  
B 4 4 4 4 4 4 4

bass

51

drums

guitar

T  
A 0 0 0 1 0 0 0 0 0 0 0 4 2 2 0 4 2 2  
B 4 4 4 0 4 2 2 2 2 0 4 2 2 4 2 2 2 2 2 5 4 2 2 5 4 2 2

bass

53

drums

guitar

bass

6 0 0 4 2 2 0 4 2 2 6 0 0 4 2 2 0 4 2 2

2 4 2 2 2 2 2 2 2 4 2 2 2 2 2 2 2 2 2 2

2 5 4 2 2 5 4 2 2 2 5 4 2 2 5 4 2 2

55

drums

guitar

bass

6 0 0 4 2 2 0 4 2 0 0 0 0 0 0 0

2 4 2 2 2 2 2 2 2 4 4 4 4 4 4 4

2 5 4 2 2 5 4 2 4 4 4 4 4 4 4 4

57

drums

guitar

0 0 0 0 1 0 0 0 0 0 0 0 0 0

4 4 4 4 0 4 2 2 2 2 4 4 4 4

59

drums

guitar

bass

0 0 0 0 1 0 2 2 2 2 0 0

4 4 4 4 4 4 0 4 2 2 2 2 4 4

61

drums

guitar

T 0 0 0 0 0 0 0 0 0 0 1 0 0 0 0 0

A 0 0 0 0 0 0 0 0 0 0 1 0 2 2 2 2

B 4 4 4 4 4 4 4 4 4 4 0 4 2 2 2 2

bass

Detailed description: This system covers measures 61 and 62. The drums play a consistent pattern of eighth notes with a snare drum on the second and fourth beats of each measure. The guitar part features a steady eighth-note accompaniment on the bass strings (B and E) and a melodic line on the treble strings (G, B, D, F). The bass line consists of eighth notes, primarily on the G and B strings, with some chromatic movement.

63

drums

guitar

T 0 0 0 0 0 0 0 0 0 0 1 0 0 0

A 0 0 0 0 0 0 0 0 0 0 0 0 2 2

B 4 4 4 4 4 4 4 4 4 4 4 4 2 2

bass

Detailed description: This system covers measures 63 and 64. The drum pattern remains consistent. The guitar part continues with the same accompaniment and melodic lines. The bass line shows a slight change in rhythm and pitch, including some chords and rests.

65

drums

guitar

T 0 0

A 2 2 0 4 2 2 0 4 2 2 6 0 4 2 2 0 4 2 2

B 2 2 5 4 2 2 2 5 4 2 2 2 4 5 4 2 2 5 4 2 2

bass

Detailed description: This system covers measures 65 and 66. The drum pattern is consistent. The guitar part introduces a new melodic line on the treble strings, featuring a prominent sixteenth-note figure. The bass line continues with eighth notes, maintaining a steady groove.

67

drums

guitar

T 2 6 0 0 4 2 2 0 4 2 2 6 0 4 2 0 4 2

A 2 2 4 0 4 2 2 0 4 2 2 2 4 0 4 2 0 4 2

B 2 2 5 4 2 2 2 5 4 2 2 2 4 5 4 2 2 5 4 2

bass

Detailed description: This system covers measures 67 and 68. The drum pattern is consistent. The guitar part continues with the melodic line from the previous system. The bass line remains steady with eighth notes.



69

drums

guitar

T  
A  
B

bass

Detailed description: This system covers measures 69, 70, and 71. The drums part features a consistent pattern of eighth notes with a snare drum on the second and fourth beats of each measure. The guitar part has two staves, T (top) and B (bottom), with fret numbers indicated below. The bass part is written in a single staff with a treble clef and a key signature of one sharp (F#).

72

drums

guitar

T  
A  
B

bass

Detailed description: This system covers measures 72 and 73. The drums part continues with the same eighth-note pattern. The guitar part shows a change in fretting, with the top staff (T) mostly playing open strings (0) and the bottom staff (B) playing notes on the 5th and 4th frets. The bass part continues with its eighth-note line.

74

drums

guitar

T  
A  
B

bass

Detailed description: This system covers measures 74 and 75. The drums part remains consistent. The guitar part shows the top staff (T) playing notes on the 2nd fret and the bottom staff (B) playing notes on the 4th and 5th frets. The bass part continues with its eighth-note line.

76

drums

guitar

T  
A  
B

bass

Detailed description: This system covers measures 76, 77, and 78. The drums part continues with the eighth-note pattern. The guitar part shows the top staff (T) playing notes on the 0th fret and the bottom staff (B) playing notes on the 5th, 4th, and 2nd frets. The bass part continues with its eighth-note line.

79

drums

guitar

bass

This system covers measures 79 and 80. The drums part features a consistent rhythmic pattern of eighth notes. The guitar part is shown with two staves, T and B, with fret numbers 2, 0, 0, 0, 0, 0, 0, 0 in the first measure and 0, 0, 0, 0, 0, 0, 0, 0 in the second. The bass part consists of eighth notes, with a sharp sign (#) appearing under the second measure.

81

drums

guitar

bass

This system covers measures 81 and 82. The drums part continues with the same eighth-note pattern. The guitar part has fret numbers 0, 0, 4, 0, 2, 2, 4, 2, 2 in the first measure and 4, 0, 1, 2, 2, 2, 2, 2 in the second. The bass part continues with eighth notes and includes sharp signs (#) under the first and second measures.

83

drums

guitar

bass

This system covers measures 83 and 84. The drums part remains consistent. The guitar part has fret numbers 2, 0, 0, 0, 0, 0, 0, 0 in the first measure and 0, 0, 0, 0, 0, 0, 0, 0 in the second. The bass part continues with eighth notes, featuring sharp signs (#) under the second and fourth measures.

85

drums

guitar

bass

This system covers measures 85 and 86. The drums part has a more complex pattern with some sixteenth notes. The guitar part has fret numbers 3, 2, 2, 1, 3, 2, 2, 1 in the first measure and 3, 2, 2, 1, 3, 2, 2, 1 in the second. The bass part continues with eighth notes.

87

drums

guitar

bass

This system covers measures 87 and 88. The drums part features a complex rhythmic pattern with many sixteenth notes and rests. The guitar part has a fretboard diagram with fret numbers 3, 2, 2, 1, 3, 2, 2, 1, 3, 2, 2, 1, 2, 1, 3, 2, 2, 1, 3, 2, 2, 1. The bass part consists of a simple eighth-note line.

89

drums

guitar

bass

This system covers measures 89 and 90. The drums part continues with a complex rhythmic pattern. The guitar part has a fretboard diagram with fret numbers 3, 2, 2, 1, 3, 2, 2, 1. The bass part features a steady eighth-note line.

91

drums

guitar

bass

This system covers measures 91 and 92. The drums part has a complex rhythmic pattern. The guitar part has a fretboard diagram with fret numbers 2, 2, 2, 2, 2, 2, 2, 0, 0, 0. The bass part features a steady eighth-note line.

92

drums

guitar

bass

This system covers measures 92 and 93. The drums part has a complex rhythmic pattern. The guitar part has a fretboard diagram with fret numbers 2, 2, 2, 2, 2, 2, 2. The bass part features a steady eighth-note line.

93

drums

guitar

bass

This system covers measures 93 and 94. The drums part features a consistent pattern of eighth notes with accents. The guitar part has a treble clef and a tab line below it. The bass part is in a bass clef and features a steady eighth-note rhythm.

95

drums

guitar

bass

This system covers measures 95 and 96. The drums part continues with the eighth-note pattern. The guitar part has a treble clef and a tab line. The bass part continues with the eighth-note rhythm.

97

drums

guitar

bass

This system covers measures 97 and 98. The drums part continues with the eighth-note pattern. The guitar part has a treble clef and a tab line. The bass part continues with the eighth-note rhythm.

99

drums

guitar

bass

This system covers measures 99 and 100. The drums part continues with the eighth-note pattern. The guitar part has a treble clef and a tab line. The bass part continues with the eighth-note rhythm.

101

drums

guitar

bass

This system contains measures 101 and 102. The drums part features a consistent rhythmic pattern of eighth notes with accents. The guitar part has a simple chordal accompaniment with fret numbers 0 and 2. The bass part plays a steady eighth-note line.

103

drums

guitar

bass

This system contains measures 103 and 104. The drums part continues with eighth notes and includes some rests. The guitar part remains chordal with fret numbers 2 and 0. The bass part features a more complex eighth-note pattern with some slurs.

105

drums

guitar

bass

This system contains measures 105 and 106. The drums part has a consistent eighth-note pattern. The guitar part has fret numbers 2, 0, and 5. The bass part continues with eighth notes, including some slurs.

106

drums

guitar

bass

This system contains measures 107 and 108. The drums part continues with eighth notes. The guitar part has fret numbers 2 and 0. The bass part features eighth notes with slurs.

107

drums

guitar

bass

Detailed description: This system covers measures 107 to 110. The drums part features a consistent pattern of eighth notes with accents and slurs. The guitar part has a treble clef and a bass clef, with fret numbers 2, 0, and 5 indicated. The bass part is in a bass clef with eighth notes and slurs.

108

drums

guitar

bass

Detailed description: This system covers measures 107 to 110. The drums part continues with eighth notes and accents. The guitar part shows fret numbers 0 and 5. The bass part continues with eighth notes and slurs.

109

drums

guitar

bass

Detailed description: This system covers measures 107 to 110. The drums part includes some notes with 'x' marks. The guitar part has fret numbers 2. The bass part continues with eighth notes and slurs.

110

drums

guitar

bass

Detailed description: This system covers measures 107 to 110. The drums part continues with eighth notes and accents. The guitar part has fret numbers 2, 0, and 5. The bass part continues with eighth notes and slurs.



118

drums

guitar

bass

2 2 2 2 2 0 0  
1 1 1 1 1 2 5 5

119

drums

guitar

bass

0 0 0 0 0 0 0 0  
0 0 0 0 0 0 0 0  
5 # 5 5 0 5 4 4

120

drums

guitar

bass

0 0 0 0 0 0 0 0  
0 0 0 0 0 0 4 5 2  
# 4 4 5 5 4 5 2

121

drums

guitar

bass

2 4 2 2 4 0 1 2  
2 4 2 2 4 5 1 1



122

drums

guitar

bass

Detailed description: This system covers measures 122 to 125. The drums part features a consistent pattern of eighth notes with accents and slurs. The guitar part has two staves, T and B, with fret numbers: 2 1, 2 1, 2 1, 2 1, 2 1, 0 0, 0 0. The bass part consists of quarter notes: G2, F2, E2, D2, C2, B1, A1, G1.

123

drums

guitar

bass

Detailed description: This system covers measures 126 to 129. The drums part continues with eighth notes and accents. The guitar part has fret numbers: 0 0, 0 0, 0 0, 0 0, 0 0, 0 0, 0 0, 0 0. The bass part has quarter notes: G2, F2, E2, D2, C2, B1, A1, G1.

124

drums

guitar

bass

Detailed description: This system covers measures 130 to 135. The drums part includes a triplet of eighth notes in measure 132. The guitar part has fret numbers: 0 0, 0 0, 0 0, 0 0, 0 0, 0 0, 4 0, 2 2, 2 4, 2 2, 2 4, 0 1, 2 1. The bass part has quarter notes: G2, F2, E2, D2, C2, B1, A1, G1.

126

drums

guitar

bass

Detailed description: This system covers measures 136 to 141. The drums part features eighth notes with accents and slurs. The guitar part has fret numbers: 2 2, 2 2, 2 2, 2 2, 2 2, 0 0, 0 0, 0 0, 0 0, 0 0, 0 0, 0 0, 0 0, 0 0, 0 0, 0 0, 4 0, 2 2. The bass part has quarter notes: G2, F2, E2, D2, C2, B1, A1, G1.

129

drums

guitar

bass

132

drums

guitar

bass

135

drums

guitar

bass

138

drums

guitar

bass

141

drums

guitar

bass

143

drums

guitar

bass

146

drums

guitar

bass

149

drums

bass

152

drums

154

drums

# Mudvayne - Nothing To Gein

drums

♩ = 112,000061

4

10

11

13

17

23

26

29

31

32

V.S.

33

35

37

39

41

43

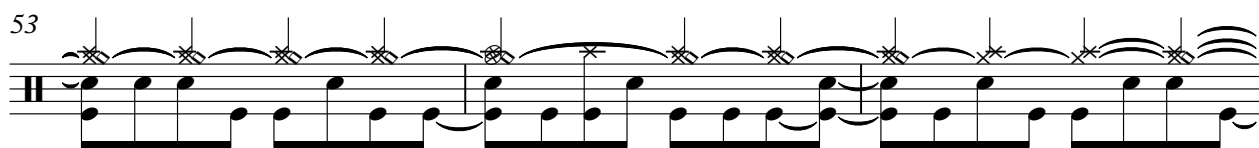
45

47

49

51

53



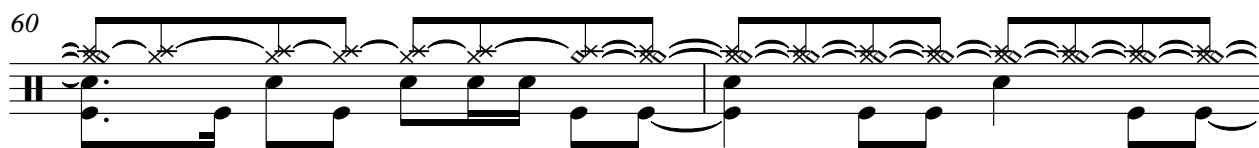
56



58



60



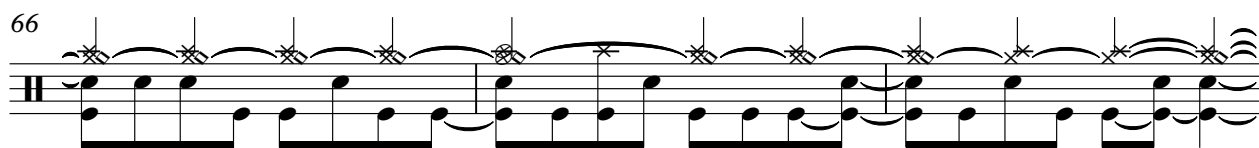
62



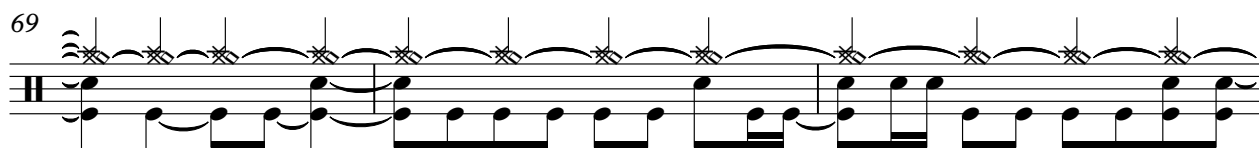
64



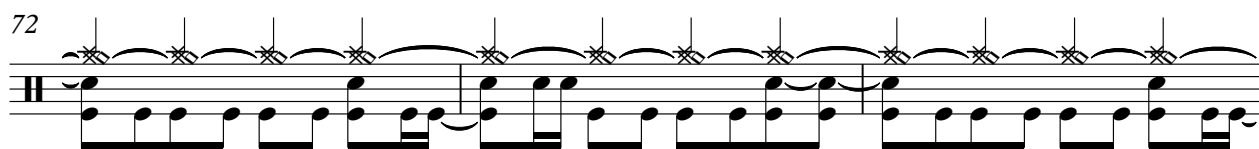
66




69



72



75



V.S.

78

81

84

87

90

92

94

96

98

101

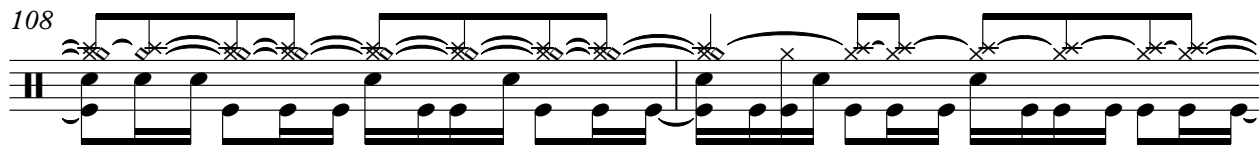
104



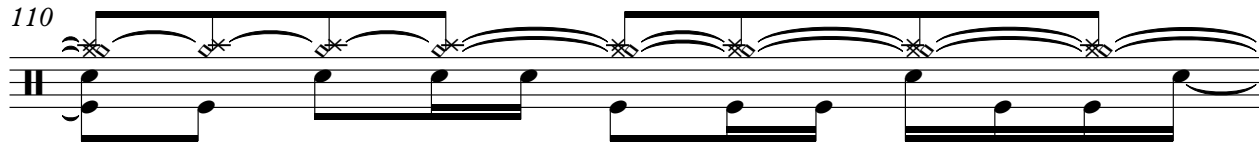
106



108



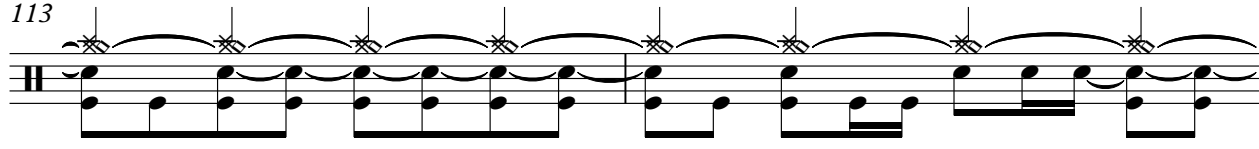
110



111



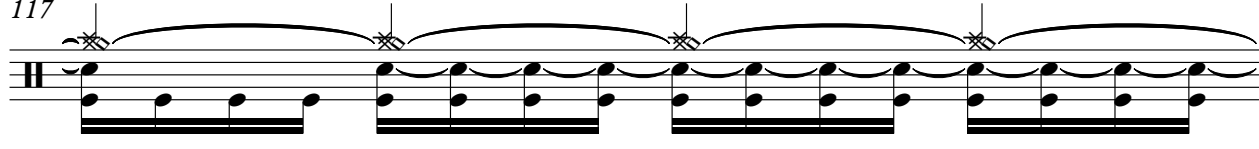
113



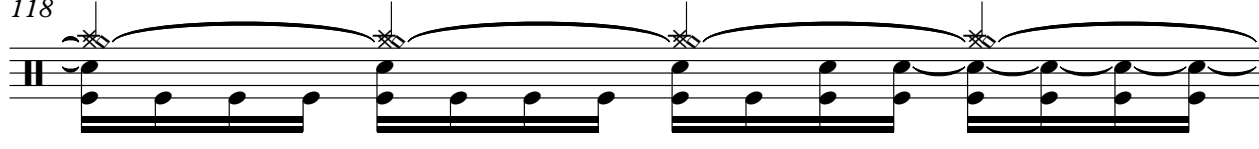
115




117



118



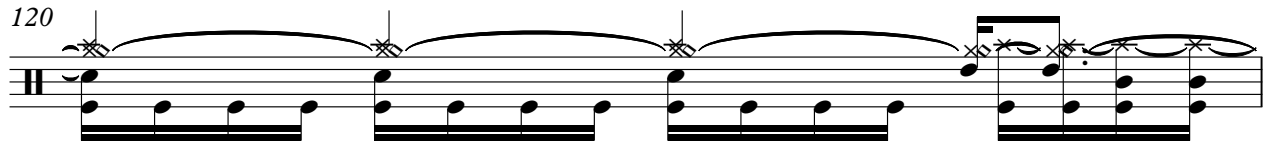
119



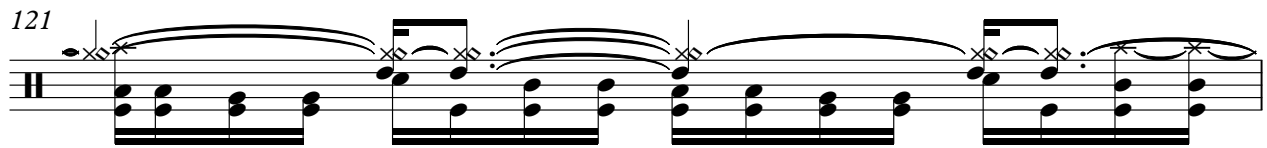
V.S.



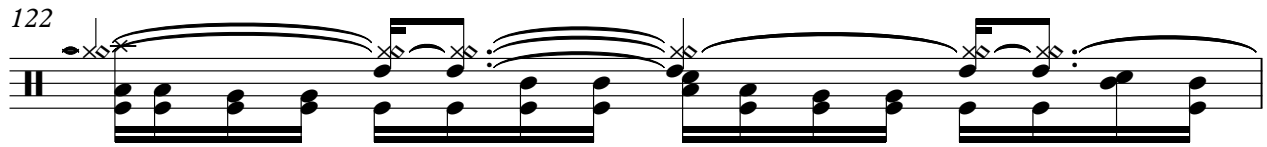
120



121



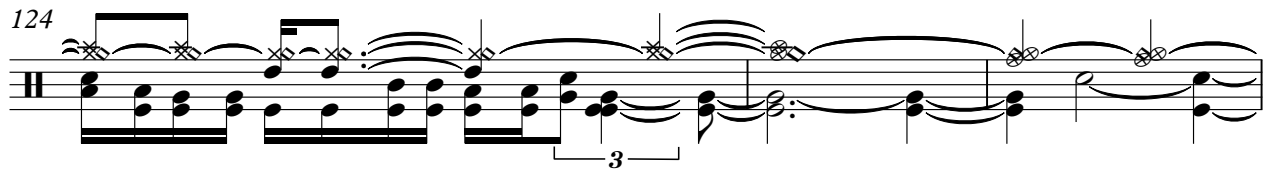
122



123



124



127



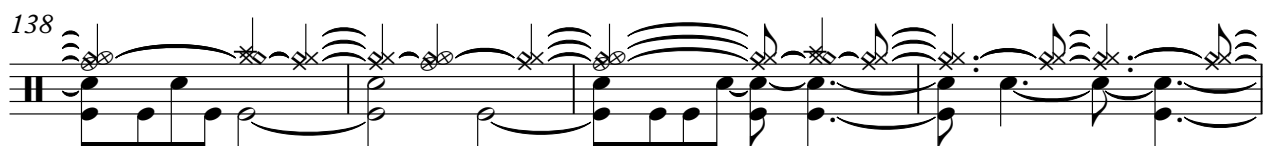
130



134



138



142



145

Musical notation for drums, measures 145-148. The notation is on a single staff with a double bar line at the beginning. It features a complex rhythmic pattern with many beamed notes and rests, indicating a fast and intricate drum part. The notes are primarily eighth and sixteenth notes, often grouped together with beams and flags.

149

Musical notation for drums, measures 149-152. The notation continues the complex rhythmic pattern from the previous section, maintaining the same level of intricacy with beamed notes and rests.

153

Musical notation for drums, measures 153-156. The notation concludes the section with a final rhythmic phrase, ending with a double bar line.









T				
A				
B	2 4 2 2 4 0 2	2 2 2 2 2 0 0	0 0 0 0 0 0 0 0	0 0 0 0 0 0 0
B	2 4 2 2 4 5 1 1	1 1 1 1 1 1 1	5 5 5 5 0	5 4 4 4 4 5 5 4 5 2

125

T				
A				
B	2 4 2 2 4 0 2	2 2 2 2 2 0 0	0 0 0 0 0 0 0 0	0 0 0 0 0 0 0 0
B	2 4 2 2 4 5 1 1	1 1 1 1 1 1 1	5 5 5 5 0	5 4 4 4 4 5 5 4 5 2

129

T				
A				
B	2 4 2 2 4 0 2	2 2 2 2 2 0 0	0 0 0 0 0 0 0 0	0 0 0 0 0 0 0 0
B	2 4 2 2 4 5 1 1	1 1 1 1 1 1 1	5 5 5 5 0	5 4 4 4 4 5 5 4 5 2

133

T				
A				
B	2 4 2 2 4 0 2	2 2 2 2 2 0 0	0 0 0 0 0 0 0 0	0 0 0 0 0 0 0 0
B	2 4 2 2 4 5 1 1	1 1 1 1 1 1 1	5 5 5 5 0	5 4 4 4 4 5 5 4 5 2

137

T					0 0
A					
B	2 4 2 2 4 0 2	2 2 2 2 2 0 0	0 0 0 0 0 0 0 0	0 0 0 0 0 0 0 0	0 0 2 2
B	2 4 2 2 4 5 1 1	1 1 1 1 1 1 1	5 5 5 5 0	5 4 4 4 4 5 5	


141

T	0 0 0 0 0 0 0 0	0 0 0 0 0 0 0 0	0 0 0 0 0 0 0 0	0 0 0 0 0 0 0 0
A				
B	2 2 2 2 2 2 2 2	2 2 2 2 2 2 2 2	2 2 2 2 2 2 2 2	2 2 2 2 2 2 2 2

145

T	0 0 0 0 0 0 0 0	0 0 0 0 0 0 0 0
A		
B	2 2 2 2 2 2 2 2	2 2 2 2 2 2 2 2

147

T	0 0 0 0 0 0 0	0	
A			
B	2 2 2 2 2 2 2	2	





49



52



54



60



64



67



70



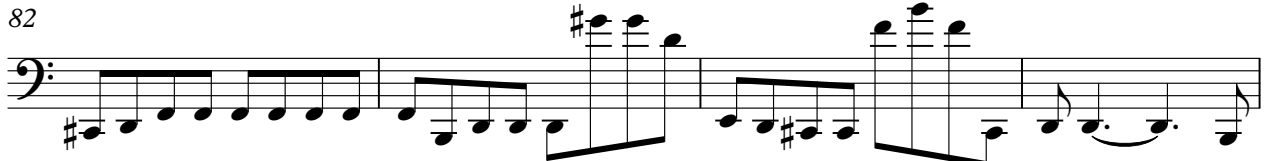
74



78

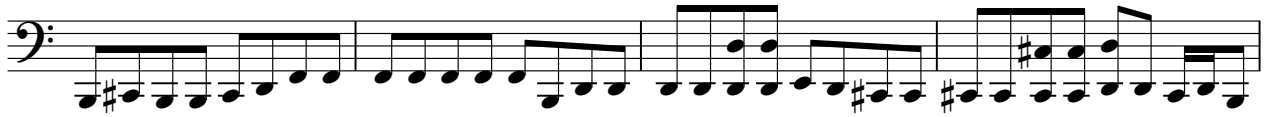


82

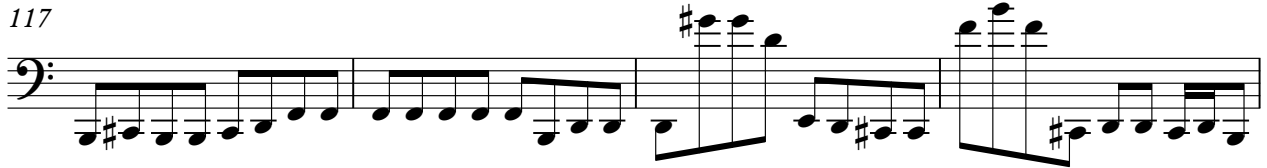




113



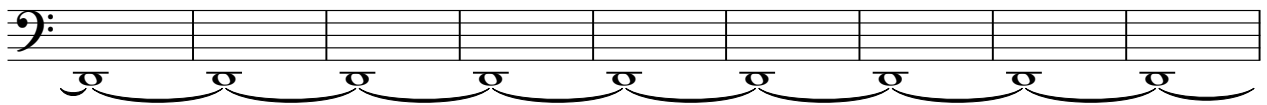
117



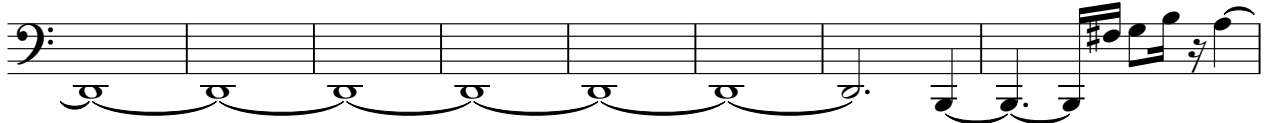
121



125



134



142



147

