

# Mystikal - Shake Ya Ass

♩ = 98,000145

Percussion

Fretless Electric Bass

Bandoneon

Bandoneon

♩ = 98,000145

3

Perc.

E. Bass

Band.

Band.

5

Perc. E. Bass Band. Band.

This system contains measures 5 and 6. The Percussion part features a complex rhythmic pattern with eighth and sixteenth notes, including accents and slurs. The Electric Bass part has a simple bass line with eighth notes and rests. The Band part consists of two staves: the upper staff has chords in the treble clef, and the lower staff has a bass line in the bass clef.

7

Perc. E. Bass Band. Band.

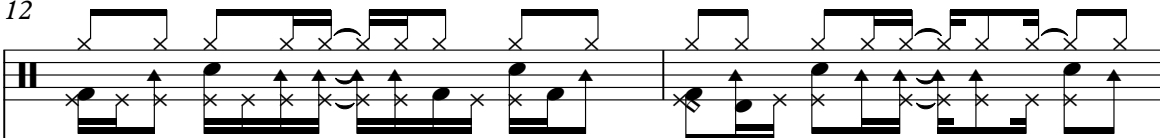
This system contains measures 7 and 8. The Percussion part continues with a similar rhythmic pattern to measures 5-6. The Electric Bass part has a simple bass line with eighth notes and rests. The Band part consists of two staves: the upper staff has chords in the treble clef, and the lower staff has a bass line in the bass clef.


9

Perc. E. Bass Band. Band.


This system contains measures 9 and 10. The Percussion part continues with a similar rhythmic pattern to measures 5-6. The Electric Bass part has a simple bass line with eighth notes and rests. The Band part consists of two staves: the upper staff has chords in the treble clef, and the lower staff has a bass line in the bass clef.

12

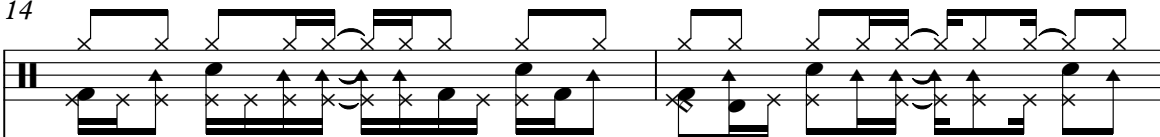
Perc. 


E. Bass 

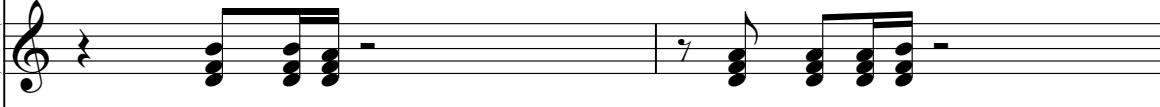
Band. 


Band. 

14

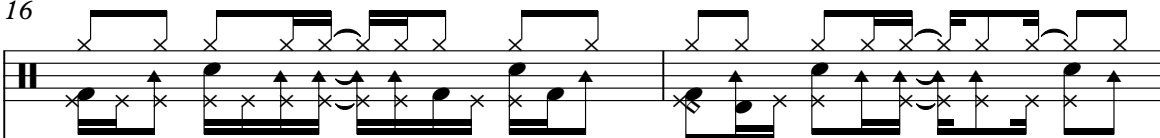
Perc. 


E. Bass 

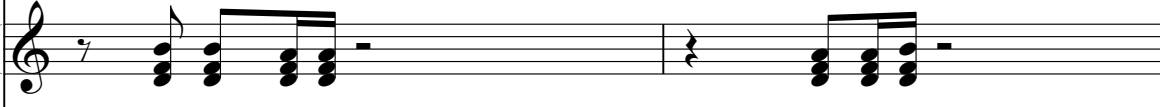
Band. 


Band. 

16

Perc. 

E. Bass 

Band. 

Band. 

18

Perc. E. Bass Band. Band.

This system contains measures 18 and 19. The Percussion part features a complex rhythmic pattern with eighth and sixteenth notes, some marked with 'x' for accents. The Electric Bass part has a simple line with eighth notes and rests. The two Band parts (Treble and Bass clefs) play block chords, primarily triads, with some movement between measures.

20

Perc. E. Bass Band. Band.

This system contains measures 20 and 21. The Percussion part continues with its rhythmic pattern. The Electric Bass part has a simple line with eighth notes and rests. The two Band parts (Treble and Bass clefs) play block chords, primarily triads, with some movement between measures.

22

Perc. E. Bass Band. Band.

This system contains measures 22 and 23. The Percussion part continues with its rhythmic pattern. The Electric Bass part has a simple line with eighth notes and rests. The two Band parts (Treble and Bass clefs) play block chords, primarily triads, with some movement between measures.

24

Perc. E. Bass Band. Band.

This system contains measures 24 and 25. The Percussion part features a complex rhythmic pattern with many 'x' marks above the notes. The E. Bass part has a simple bass line with rests. The upper Band part (treble clef) plays chords, and the lower Band part (bass clef) plays a rhythmic line.

26

Perc. E. Bass Band. Band.

This system contains measures 26 and 27. The Percussion part continues with its complex rhythmic pattern. The E. Bass part has a simple bass line with rests. The upper Band part (treble clef) plays chords, and the lower Band part (bass clef) plays a rhythmic line.

28

Perc. E. Bass Band. Band.

This system contains measures 28 and 29. The Percussion part continues with its complex rhythmic pattern. The E. Bass part has a simple bass line with rests. The upper Band part (treble clef) plays chords, and the lower Band part (bass clef) plays a rhythmic line.

30

Perc. E. Bass Band. Band.

This system contains measures 30 and 31. The Percussion part features a complex rhythmic pattern with many 'x' marks above the notes. The E. Bass part has a simple bass line with eighth notes and rests. The two Band parts (treble and bass clef) play chords, with the bass clef part having a more active line than the treble clef part.

32

Perc. E. Bass Band. Band.

This system contains measures 32 and 33. The Percussion part continues with its complex rhythmic pattern. The E. Bass part has a simple bass line. The two Band parts play chords, with the bass clef part having a more active line than the treble clef part.

34

Perc. E. Bass Band. Band.

This system contains measures 34 and 35. The Percussion part continues with its complex rhythmic pattern. The E. Bass part has a simple bass line. The two Band parts play chords, with the bass clef part having a more active line than the treble clef part.

36

Perc. E. Bass Band. Band.

This system contains measures 36 and 37. The Percussion part features a complex rhythmic pattern with many 'x' marks above the notes. The E. Bass part has a simple bass line with rests. The two Band parts play chords in the right and left hands, respectively.

38

Perc. E. Bass Band. Band.

This system contains measures 38 and 39. The Percussion part continues with its complex rhythmic pattern. The E. Bass part has a simple bass line with rests. The two Band parts play chords in the right and left hands, respectively.

40

Perc. E. Bass Band. Band.

This system contains measures 40 and 41. The Percussion part continues with its complex rhythmic pattern. The E. Bass part has a simple bass line with rests. The two Band parts play chords in the right and left hands, respectively.

42  $\text{♩} = 98,00014^f$

Perc.

E. Bass

Band.

Band.

$\text{♩} = 98,00014^f$

Detailed description: This system contains measures 42 and 43. The percussion part features a complex rhythmic pattern with many 'x' marks above notes. The electric bass part has a simple rhythmic line. The band parts consist of chords in the upper staff and a rhythmic line in the lower staff. A tempo marking of 98,00014^f is present at the beginning and end of the system.

44  $\text{♩} = 98,000145$

Perc.

E. Bass

Band.

Band.

$\text{♩} = 98,000145$

Detailed description: This system contains measures 44 and 45. The percussion part continues with its complex rhythmic pattern. The electric bass part has a simple rhythmic line. The band parts consist of chords in the upper staff and a rhythmic line in the lower staff. A tempo marking of 98,000145 is present at the beginning and end of the system.

46

Perc.

E. Bass

Band.

Band.

Detailed description: This system contains measures 46 and 47. The percussion part continues with its complex rhythmic pattern. The electric bass part has a simple rhythmic line. The band parts consist of chords in the upper staff and a rhythmic line in the lower staff.



48

Perc. E. Bass Band. Band.

This system contains measures 48 and 49. The Percussion part features a complex rhythmic pattern with many 'x' marks above notes. The Electric Bass part has a simple line with some rests. The two Band parts (treble and bass clef) play chords, with the bass clef part having a more active line than the treble clef part.

50

Perc. E. Bass Band. Band.

This system contains measures 50 and 51. The Percussion part continues with its complex rhythmic pattern. The Electric Bass part has a simple line with some rests. The two Band parts (treble and bass clef) play chords, with the bass clef part having a more active line than the treble clef part.

52

Perc. E. Bass Band. Band.

This system contains measures 52 and 53. The Percussion part continues with its complex rhythmic pattern. The Electric Bass part has a simple line with some rests. The two Band parts (treble and bass clef) play chords, with the bass clef part having a more active line than the treble clef part.

54

Perc.

E. Bass

Band.

Band.

56

Perc.

E. Bass

Band.

Band.

58

Perc.

E. Bass

Band.

Band.

60

Perc. E. Bass Band. Band.

This system contains measures 60 and 61. The Percussion part features a complex rhythmic pattern with many 'x' marks above the notes. The E. Bass part has a bass line with eighth and quarter notes. The two Band parts (treble and bass clef) play chords, with the bass clef part having a more active line than the treble clef part.

62

Perc. E. Bass Band. Band.

This system contains measures 62 and 63. The Percussion part continues with its complex rhythmic pattern. The E. Bass part has a similar bass line to the previous system. The two Band parts play chords, with the bass clef part having a more active line than the treble clef part.

64

Perc. E. Bass Band. Band.

This system contains measures 64 and 65. The Percussion part continues with its complex rhythmic pattern. The E. Bass part has a similar bass line to the previous system. The two Band parts play chords, with the bass clef part having a more active line than the treble clef part.

66

Perc. E. Bass Band. Band.

This system contains measures 66 and 67. The Percussion part features a complex rhythmic pattern with many 'x' marks above the notes. The E. Bass part has a simple bass line with rests. The Band part consists of two staves: the upper staff has chords in the right hand and rests in the left hand, while the lower staff has a bass line with eighth notes and rests.

68

Perc. E. Bass Band. Band.

This system contains measures 68 and 69. The Percussion part continues with its complex rhythmic pattern. The E. Bass part has a simple bass line with rests. The Band part consists of two staves: the upper staff has chords in the right hand and rests in the left hand, while the lower staff has a bass line with eighth notes and rests.

70

Perc. E. Bass Band. Band.

This system contains measures 70 and 71. The Percussion part continues with its complex rhythmic pattern. The E. Bass part has a simple bass line with rests. The Band part consists of two staves: the upper staff has chords in the right hand and rests in the left hand, while the lower staff has a bass line with eighth notes and rests.

72

Perc. E. Bass Band. Band.

This system contains measures 72 and 73. The Percussion part features a complex rhythmic pattern with many 'x' marks above the notes. The Electric Bass part has a simple line with some rests. The two Band parts (treble and bass clef) play chords, with the bass clef part having a more active line than the treble clef part.

74

Perc. E. Bass Band. Band.

This system contains measures 74 and 75. The Percussion part continues with its complex rhythmic pattern. The Electric Bass part has a simple line with some rests. The two Band parts (treble and bass clef) play chords, with the bass clef part having a more active line than the treble clef part.

76

Perc. E. Bass Band. Band.

This system contains measures 76 and 77. The Percussion part continues with its complex rhythmic pattern. The Electric Bass part has a simple line with some rests. The two Band parts (treble and bass clef) play chords, with the bass clef part having a more active line than the treble clef part.

78

Perc. E. Bass Band. Band.

This system contains measures 78 and 79. The Percussion part features a complex rhythmic pattern with many 'x' marks above the notes. The E. Bass part has a simple bass line with rests. The two Band parts play chords in the right and left hands, respectively.

80

Perc. E. Bass Band. Band.

This system contains measures 80 and 81. The Percussion part continues with its complex rhythmic pattern. The E. Bass part has a simple bass line with rests. The two Band parts play chords in the right and left hands, respectively.

82

Perc. E. Bass Band. Band.

This system contains measures 82 and 83. The Percussion part continues with its complex rhythmic pattern. The E. Bass part has a simple bass line with rests. The two Band parts play chords in the right and left hands, respectively.

84 ♩ = 15,98,00014'

Perc.

E. Bass

Band.

Band.

♩ = 98,00014'

Detailed description: This system contains measures 84 and 85. The percussion staff features a complex rhythmic pattern with various note values and rests. The electric bass staff follows a similar rhythmic structure. The two band staves provide harmonic support with chords and rhythmic accompaniment. A tempo marking of 15,98,00014' is shown at the top right, and 98,00014' is shown at the bottom right.

86 ♩ = 98,000145

Perc.

E. Bass

Band.

Band.

♩ = 98,000145

Detailed description: This system contains measures 86 and 87. The percussion staff continues with its rhythmic pattern. The electric bass staff maintains its rhythmic role. The band staves provide harmonic accompaniment. A tempo marking of 98,000145 is shown at the top right and bottom right.

88

Perc.

E. Bass

Band.

Band.

Detailed description: This system contains measure 88. The percussion staff continues with its rhythmic pattern. The electric bass staff maintains its rhythmic role. The band staves provide harmonic accompaniment.

# Mystikal - Shake Ya Ass

## Percussion

♩ = 98,000145

4

7

10

13

16

19

22

25

28

V.S.



31

Measures 31-33: Percussion notation on a five-line staff. The top line contains 'x' marks representing hits. The bottom line contains rhythmic notation with stems and flags, indicating a complex, syncopated rhythm.

34

Measures 34-36: Percussion notation on a five-line staff. The top line contains 'x' marks representing hits. The bottom line contains rhythmic notation with stems and flags, indicating a complex, syncopated rhythm.

37

Measures 37-39: Percussion notation on a five-line staff. The top line contains 'x' marks representing hits. The bottom line contains rhythmic notation with stems and flags, indicating a complex, syncopated rhythm.

40

Measures 40-42: Percussion notation on a five-line staff. The top line contains 'x' marks representing hits. The bottom line contains rhythmic notation with stems and flags, indicating a complex, syncopated rhythm.

43

$\text{♩} = 98,000145$        $\text{♩} = 98,000145$

Measures 43-45: Percussion notation on a five-line staff. The top line contains 'x' marks representing hits. The bottom line contains rhythmic notation with stems and flags, indicating a complex, syncopated rhythm. A tempo marking is present above the staff.

46

Measures 46-48: Percussion notation on a five-line staff. The top line contains 'x' marks representing hits. The bottom line contains rhythmic notation with stems and flags, indicating a complex, syncopated rhythm.

49

Measures 49-51: Percussion notation on a five-line staff. The top line contains 'x' marks representing hits. The bottom line contains rhythmic notation with stems and flags, indicating a complex, syncopated rhythm.

52

Measures 52-54: Percussion notation on a five-line staff. The top line contains 'x' marks representing hits. The bottom line contains rhythmic notation with stems and flags, indicating a complex, syncopated rhythm.

55

Measures 55-57: Percussion notation on a five-line staff. The top line contains 'x' marks representing hits. The bottom line contains rhythmic notation with stems and flags, indicating a complex, syncopated rhythm.

58

Measures 58-60: Percussion notation on a five-line staff. The top line contains 'x' marks representing hits. The bottom line contains rhythmic notation with stems and flags, indicating a complex, syncopated rhythm.

61

Measures 61-63: Percussion notation on a five-line staff. The top line contains rhythmic patterns of eighth and sixteenth notes with 'x' marks above them. The bottom line contains a bass line with eighth and sixteenth notes.

64

Measures 64-66: Percussion notation on a five-line staff. The top line contains rhythmic patterns of eighth and sixteenth notes with 'x' marks above them. The bottom line contains a bass line with eighth and sixteenth notes.

67

Measures 67-69: Percussion notation on a five-line staff. The top line contains rhythmic patterns of eighth and sixteenth notes with 'x' marks above them. The bottom line contains a bass line with eighth and sixteenth notes.

70

Measures 70-72: Percussion notation on a five-line staff. The top line contains rhythmic patterns of eighth and sixteenth notes with 'x' marks above them. The bottom line contains a bass line with eighth and sixteenth notes.

73

Measures 73-75: Percussion notation on a five-line staff. The top line contains rhythmic patterns of eighth and sixteenth notes with 'x' marks above them. The bottom line contains a bass line with eighth and sixteenth notes.

76

Measures 76-78: Percussion notation on a five-line staff. The top line contains rhythmic patterns of eighth and sixteenth notes with 'x' marks above them. The bottom line contains a bass line with eighth and sixteenth notes.

79

Measures 79-81: Percussion notation on a five-line staff. The top line contains rhythmic patterns of eighth and sixteenth notes with 'x' marks above them. The bottom line contains a bass line with eighth and sixteenth notes.

82

Measures 82-84: Percussion notation on a five-line staff. The top line contains rhythmic patterns of eighth and sixteenth notes with 'x' marks above them. The bottom line contains a bass line with eighth and sixteenth notes.

85

♩ = 98,000145

Measures 85-86: Percussion notation on a five-line staff. The top line contains rhythmic patterns of eighth and sixteenth notes with 'x' marks above them. The bottom line contains a bass line with eighth and sixteenth notes. A tempo marking '♩ = 98,000145' is placed above the staff.

87

Measures 87-89: Percussion notation on a five-line staff. The top line contains rhythmic patterns of eighth and sixteenth notes with 'x' marks above them. The bottom line contains a bass line with eighth and sixteenth notes.



41



45



49



53



57



61



65



69



73



77



81



85

♩ = 98,000145

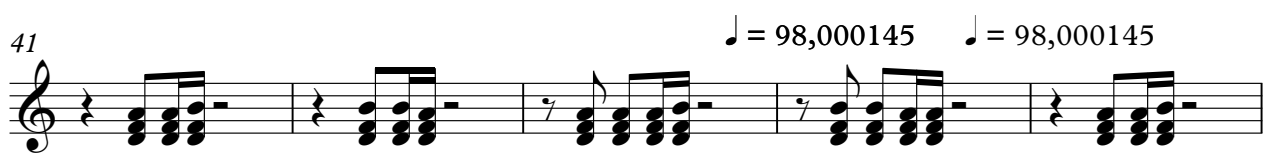
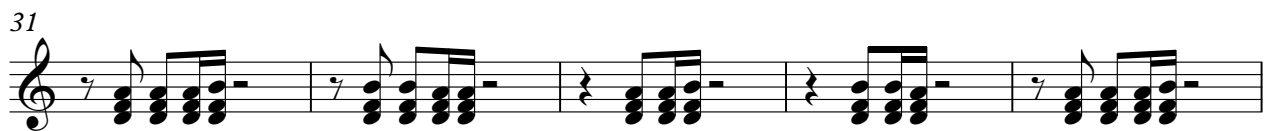
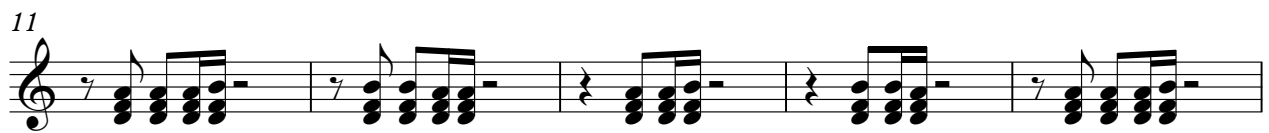
♩ = 98,000145



# Mystikal - Shake Ya Ass

Bandoneon

♩ = 98,000145



V.S.

46

51

56

61

66

71

76

81

85

♩ = 98,000145      ♩ = 98,000145

Bandoneon

Mystikal - Shake Ya Ass

♩ = 98,000145

5

9

13

17

21

25

29

33

V.S.



37



41

♩ = 98,000145

♩ = 98,000145



45



49



53



57



61



65



69



73



77



81



85

♩ = 98,000145

♩ = 98,000145

