

# Nada Surf - Popular

♩ = 96,000000

Drums

Gtr.1 (w/slight dist.)

Gtr.2 (w/slight dist.)

Gtr.3 (w/heavy dist.)

Gtr.4 (w/heavy dist.)

Bass (fingerstyle)

4

Drums

Gtr.1 (w/slight dist.)

Bass (fingerstyle)

20.0"  
9.1,00  
1st Verse

7

Drums

Gtr.1 (w/slight dist.)

Bass (fingerstyle)

10

Drums

Gtr. 1 (w/slight dist.)

Bass (fingerstyle)

13

Drums

Gtr. 1 (w/slight dist.)

Bass (fingerstyle)

16

Drums

Gtr. 1 (w/slight dist.)

Bass (fingerstyle)

19

Drums

Gtr. 1 (w/slight dist.)

Bass (fingerstyle)

22

Drums

Gtr.1 (w/slight dist.)

Bass (fingerstyle)

1. 2.5  
26. 1.00  
1st Chorus

25

Drums

Gtr.1 (w/slight dist.)

Gtr.4 (w/heavy dist.)

Bass (fingerstyle)

28

Drums

Gtr.4 (w/heavy dist.)

Bass (fingerstyle)

31

Drums

Gtr.3 (w/heavy dist.)

Gtr.4 (w/heavy dist.)

Bass (fingerstyle)

1'22.5"  
34.1,00  
2nd Verse

34

Drums

Gtr.1 (w/slight dist.)

Bass (fingerstyle)

37

Drums

Gtr.1 (w/slight dist.)

Bass (fingerstyle)

1'42.5"  
42.1,00  
2nd Chorus

40

Drums

Gtr.1 (w/slight dist.)

Gtr.4 (w/heavy dist.)

Bass (fingerstyle)

43

Drums

Gtr.4 (w/heavy dist.)

Bass (fingerstyle)

45

Drums

Gtr.4 (w/heavy dist.)

Bass (fingerstyle)

47

Drums

Gtr.3 (w/heavy dist.)

Gtr.4 (w/heavy dist.)

Bass (fingerstyle)

2'02.5"  
50.1,00  
3rd Verse

50

Drums

Gtr.1 (w/slight dist.)

Bass (fingerstyle)

53

Drums

Gtr.1 (w/slight dist.)

Bass (fingerstyle)

56

Drums

Gtr.1 (w/slight dist.)

Gtr.2 (w/slight dist.)

Gtr.3 (w/heavy dist.)

Bass (fingerstyle)

59

Drums

Gtr.1 (w/slight dist.)

Gtr.3 (w/heavy dist.)

Bass (fingerstyle)

62

Drums

Gtr.1 (w/slight dist.)

Gtr.3 (w/heavy dist.)

Bass (fingerstyle)

65

Drums

Gtr.1 (w/slight dist.)

Gtr.3 (w/heavy dist.)

Gtr.4 (w/heavy dist.)

Bass (fingerstyle)

67

Drums

Gtr.4 (w/heavy dist.)

Bass (fingerstyle)

70

Drums

Gtr.3 (w/heavy dist.)

Gtr.4 (w/heavy dist.)

Bass (fingerstyle)

73

Drums

Gtr.3 (w/heavy dist.)

Gtr.4 (w/heavy dist.)

Bass (fingerstyle)

76

Drums

Gtr.4 (w/heavy dist.)

Bass (fingerstyle)

78

Drums

Gtr.4 (w/heavy dist.)

Bass (fingerstyle)

80

Drums

Gtr.3 (w/heavy dist.)

Gtr.4 (w/heavy dist.)

Bass (fingerstyle)



# Nada Surf - Popular

## Drums

♩ = 96,000000

**3**

7

11

15

19

23

27

31

35

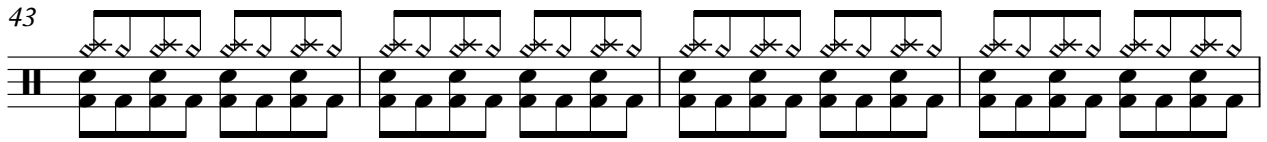
39

V.S.

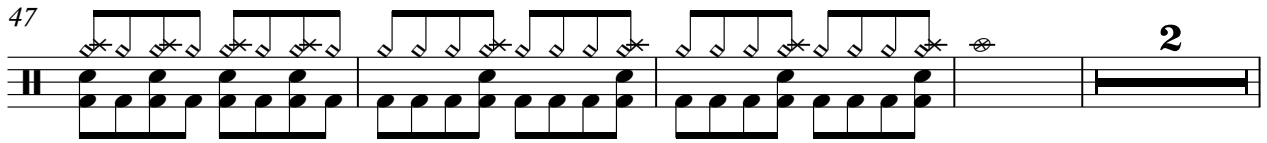
The image displays a drum score for the song 'Nada Surf - Popular'. It begins with a tempo marking of 96,000000 and a 3-measure rest. The score is written in 4/4 time and consists of ten systems of staves, each starting with a measure number (7, 11, 15, 19, 23, 27, 31, 35, 39). The notation includes various drum symbols such as snare, bass, and hi-hat, with some measures featuring asterisks to indicate specific techniques or accents. The piece concludes with a 'V.S.' (Verso) marking.

Drums

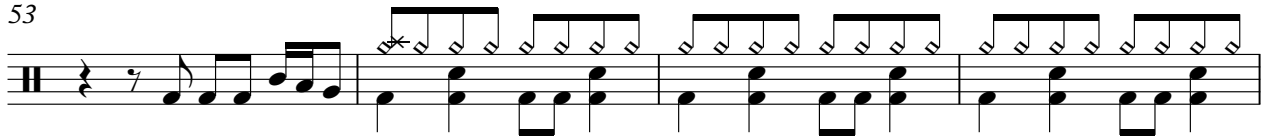
43



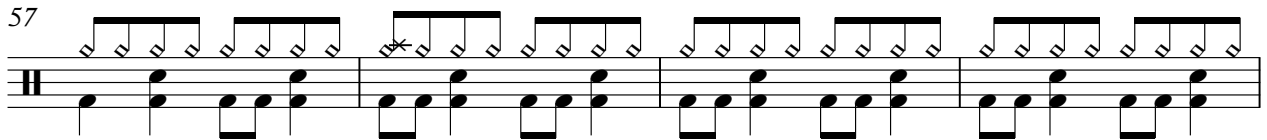
47



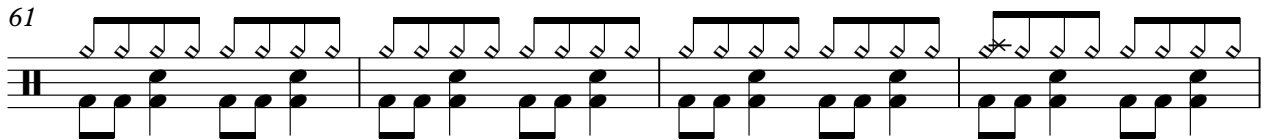
53



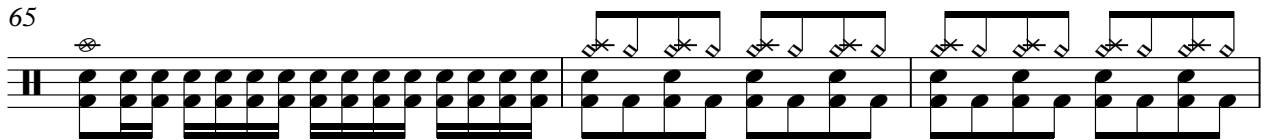
57



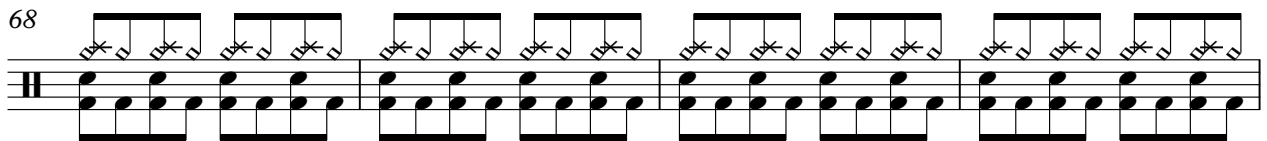
61



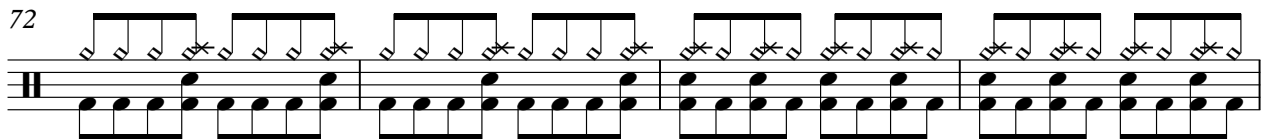
65



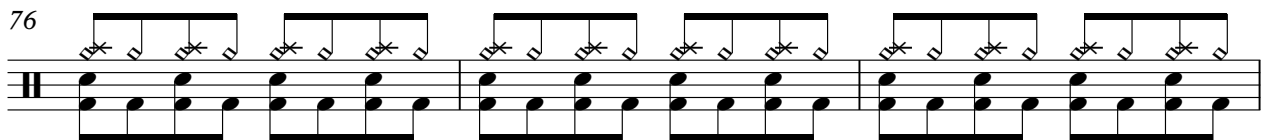
68



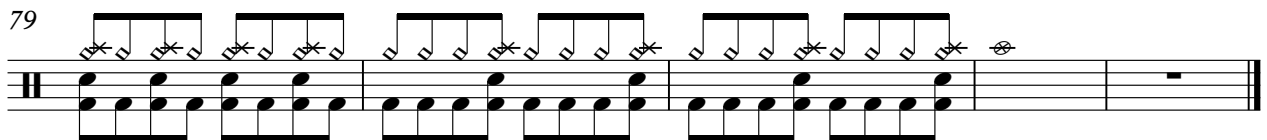
72



76



79



# Nada Surf - Popular

Gtr.1 (w/slight dist.)

♩ = 96,000000

5

9

13

17

21

25

36

40

8

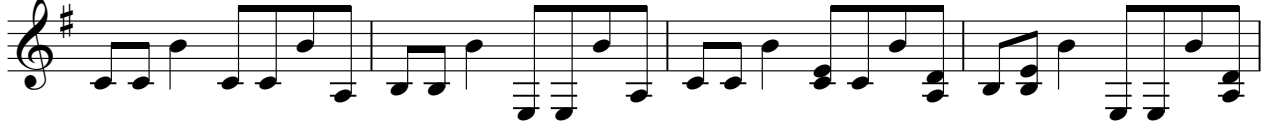
8

Detailed description: This is a guitar score for the song 'Popular' by Nada Surf. It is written for guitar 1 with a slight distortion effect. The music is in the key of D major (one sharp) and 4/4 time. The tempo is marked as ♩ = 96,000000. The score consists of ten staves of music. The first staff begins with a treble clef, a key signature of one sharp (F#), and a 4/4 time signature. The melody is primarily composed of eighth and quarter notes, often beamed together. The bass line consists of a steady eighth-note pattern. There are two instances of an 8-measure rest: one starting at measure 25 and another starting at measure 40. Measure numbers 5, 9, 13, 17, 21, 25, 36, and 40 are placed at the beginning of their respective staves.

2

Gtr.1 (w/slight dist.)

50



54



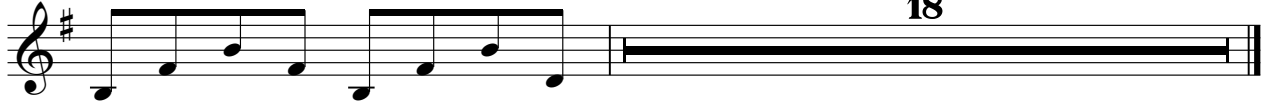
58



62



65



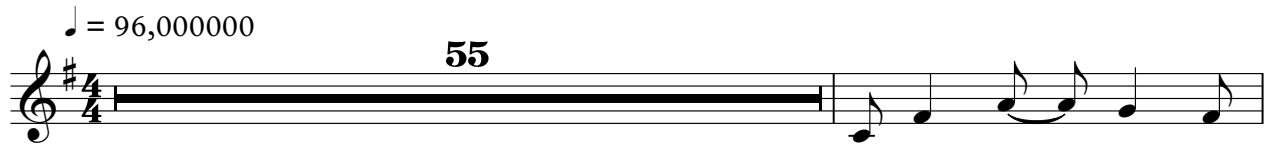
18

Gtr.2 (w/slight dist.)

# Nada Surf - Popular

♩ = 96,000000

**55**



Musical notation for guitar 2, measures 55-56. Measure 55 is a whole rest. Measure 56 contains a quarter note G4, a quarter note A4, a quarter note B4, a quarter note C5, and a quarter note B4.

57

**26**



Musical notation for guitar 2, measures 57-58. Measure 57 contains a quarter note G4, a quarter note A4, a quarter note B4, a quarter note C5, and a quarter note B4. Measure 58 is a whole rest.

Gtr.3 (w/heavy dist.)

# Nada Surf - Popular

♩ = 96,000000

31 14

48

8

59

59

63

6

72

6

80

2

Nada Surf - Popular

Gtr.4 (w/heavy dist.)

♩ = 96,000000

25

29

33

44

47

16

66

70

74

78

80

Detailed description: This is a guitar score for the song 'Popular' by Nada Surf. It is written for guitar 4 with heavy distortion. The score is in 4/4 time with a tempo of 96 BPM. The key signature has one sharp (F#). The score consists of ten staves of music. Staff 1 (measures 25-28) features a heavy, sustained chordal texture. Staff 2 (measures 29-32) introduces a rhythmic pattern with eighth notes and rests. Staff 3 (measures 33-36) has a measure rest of 8 measures. Staff 4 (measures 44-46) continues the rhythmic pattern. Staff 5 (measures 47-50) has a measure rest of 16 measures. Staff 6 (measures 66-69) returns to a heavy chordal texture. Staff 7 (measures 70-73) features a rhythmic pattern. Staff 8 (measures 74-77) continues the rhythmic pattern. Staff 9 (measures 78-81) features a rhythmic pattern. Staff 10 (measures 80-83) concludes the piece with a final chord and a double bar line.

# Nada Surf - Popular

Bass (fingerstyle)

♩ = 96,000000

2

7

12

16

20

24

28

32

36

40

V.S.



44



48



53



59



64



68



72



76



79

