

Ash - Girl From Mars

Sequence*copied

Sequence

This system shows the first three measures of the piece. The upper staff, labeled 'Sequence*copied', contains a melodic line with eighth and sixteenth notes, including slurs and a sharp sign. The lower staff, labeled 'Sequence', shows a bass line with quarter and eighth notes, and two chord diagrams for the first and third measures.

Sequence*copied

Sequence

This system covers measures 4 to 6. The upper staff continues the melodic line with slurs and a sharp sign. The lower staff shows the bass line and two chord diagrams for measures 5 and 6.

Sequence*copied

Sequence

This system covers measures 7 to 9. The upper staff features a melodic line with slurs and a sharp sign. The lower staff shows the bass line and two chord diagrams for measures 8 and 9.

Sequence*copied

Sequence

This system covers measures 10 to 12. The upper staff has a melodic line with slurs and a sharp sign. The lower staff shows the bass line and two chord diagrams for measures 11 and 12.


Sequence*copied

Sequence

This system covers measures 13 to 15. The upper staff has a melodic line with slurs and a sharp sign. The lower staff shows the bass line and two chord diagrams for measures 14 and 15.

Sequence*copied

Sequence



Sequence*copied

Sequence



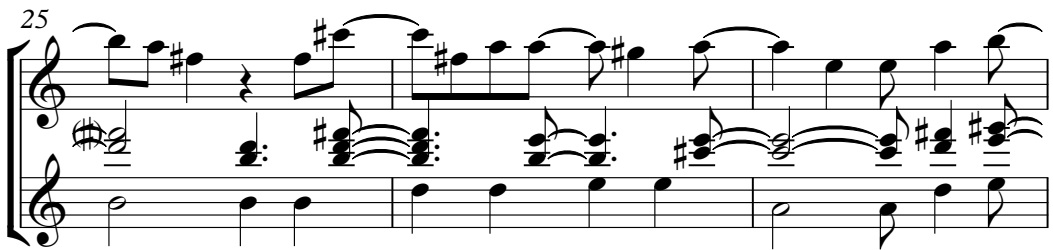
Sequence*copied

Sequence



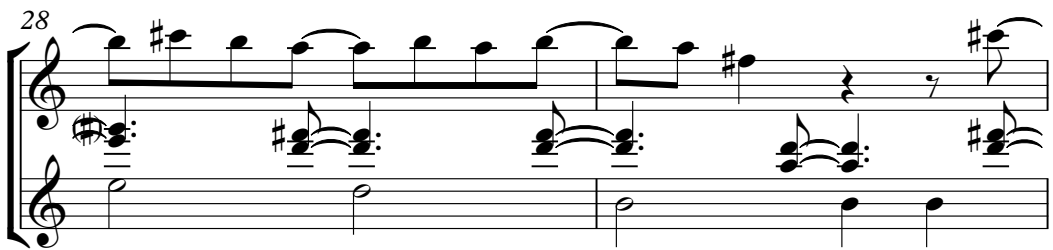
Sequence*copied

Sequence



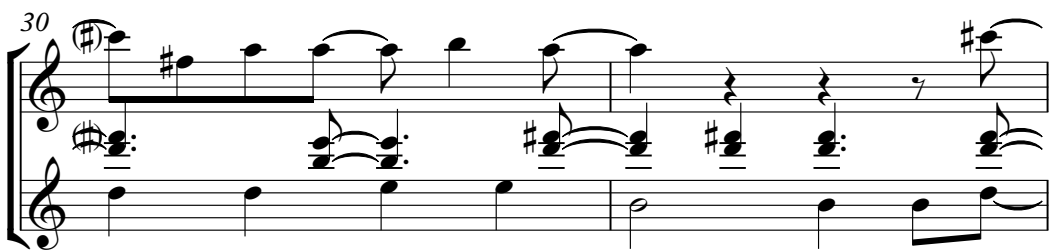
Sequence*copied

Sequence



Sequence*copied

Sequence



32

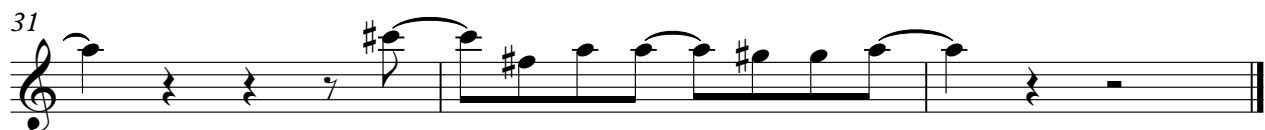
Sequence*copied

Musical notation for 'Sequence*copied' in treble clef, key of D major. It consists of a single staff with a treble clef and a sharp sign. The notation includes a series of eighth notes: D4 (quarter), E4 (quarter), F#4 (quarter), G4 (quarter), A4 (quarter), B4 (quarter), C#5 (quarter), D5 (quarter), followed by a whole rest and a double bar line.

Sequence

Musical notation for 'Sequence' in treble clef, key of D major. It consists of a single staff with a treble clef and a sharp sign. The notation includes a series of notes: D4 (quarter), E4 (quarter), F#4 (quarter), G4 (quarter), A4 (quarter), B4 (quarter), C#5 (quarter), D5 (quarter), followed by a whole rest and a double bar line.

Ash - Girl From Mars



Ash - Girl From Mars

Sequence

The musical score for the sequence of "Girl From Mars" by Ash is presented on a single treble clef staff. The key signature is one sharp (F#) and the time signature is 4/4. The sequence consists of 31 measures, with measure numbers 7, 12, 16, 20, 24, 28, and 31 explicitly labeled. The notation includes various rhythmic values such as quarter, eighth, and sixteenth notes, as well as rests. Chordal textures are indicated by vertical lines and sharp symbols (#) above the staff. The sequence begins with a simple melody and gradually introduces more complex rhythmic patterns and chordal textures, including triplets and sixteenth-note runs.