

Pod - Rock The Party

♩ = 200,000000

TabIt MIDI - Track 1

	E													
T	B													
A	D	0	0	0	0	0	0	0	0	2	2	2	3	3
B	A	0	0	0	0	0	0	0	0	0	0	3	3	3
A	E													
A	A	5	5	5	5	5	5	5	5			1	1	1

TabIt MIDI - Track 2

5

TabIt MIDI - Track 1

	E													
T	B													
A	D	0	0	0	0	0	0	0	0	2	2	2	3	3
B	A	0	0	0	0	0	0	0	0	0	0	3	3	3
A	E													
A	A	5	5	5	5	5	5	5	5			1	1	1

TabIt MIDI - Track 2

9

TabIt MIDI - Track 3

TabIt MIDI - Track 1

	E													
T	B													
A	D	0	0	0	0	0	0	0	0	2	2	2	3	3
B	A	0	0	0	0	0	0	0	0	0	0	3	3	3
A	E													
A	A	5	5	5	5	5	5	5	5			1	1	1

TabIt MIDI - Track 2

12

TabIt MIDI - Track 3

TabIt MIDI - Track 1

	E													
T	B													
A	D	3	3	3	3	0	0	0	0	0	0	0	0	0
B	A	3	3	3	3	0	0	0	0	0	0	0	0	0
A	E													
A	A	1	1	1	1	5	5	5	5	5	5	5	5	5

TabIt MIDI - Track 2

14

TabIt MIDI - Track 3

TabIt MIDI - Track 1

T									
A	0	0	0	0	2	2	2	3	
B	0	0	0	0	0	0	0	3	1
	5	5	5	5					

TabIt MIDI - Track 2

16

TabIt MIDI - Track 3

TabIt MIDI - Track 1

T									
A	3	3	3	3	0	0	0	0	0
B	3	3	3	3	0	0	0	0	0
	1	1	1	1	5	5	5	5	5

TabIt MIDI - Track 2

19

TabIt MIDI - Track 3

TabIt MIDI - Track 1

T									
A	0	0	0	0	0	0	0	0	0
B	0	0	0	0	0	0	0	0	0
	5	5	5	5	5	5	5	5	5

TabIt MIDI - Track 2

22

TabIt MIDI - Track 3

TabIt MIDI - Track 1

T									
A	0	0	0	0	2	2	2	3	
B	0	0	0	0	0	0	0	3	1
	5	5	5	5					

TabIt MIDI - Track 2

24

TabIt MIDI - Track 3

TabIt MIDI - Track 1

T							
A	3	3	3	3	0	0	0
B	3	3	3	3	0	0	0
	1	1	1	1	5	5	5

TabIt MIDI - Track 2

26

TabIt MIDI - Track 3

TabIt MIDI - Track 1

T							
A	0	0	0	0	2	2	2
B	0	0	0	0	0	0	3
	5	5	5	5			1

TabIt MIDI - Track 2

28

TabIt MIDI - Track 3

TabIt MIDI - Track 1

T							
A	3	3	3	3	0	0	0
B	3	3	3	3	0	0	0
	1	1	1	1	5	5	5

TabIt MIDI - Track 2

30

TabIt MIDI - Track 3

TabIt MIDI - Track 1

T							
A	0	0	0	0	2	2	2
B	0	0	0	0	0	0	3
	5	5	5	5			1

TabIt MIDI - Track 2

32

TabIt MIDI - Track 3

TabIt MIDI - Track 1

T							
A	3	3	3	3	0	0	0
B	3	3	3	3	0	0	0
	1	1	1	1	5	5	5

TabIt MIDI - Track 2

34

TabIt MIDI - Track 3

TabIt MIDI - Track 1

T							
A	0	0	0	0	2	2	2
B	0	0	0	0	0	0	0
	5	5	5	5			1

TabIt MIDI - Track 2

36

TabIt MIDI - Track 3

TabIt MIDI - Track 1

T							
A	3	3	3	3	0	0	0
B	3	3	3	3	0	0	0
	1	1	1	1			

TabIt MIDI - Track 2

38

TabIt MIDI - Track 3

TabIt MIDI - Track 1

T							
A	3	3	3	3	3	3	3
B	0	0	0	0	0	0	0

TabIt MIDI - Track 2

39

TabIt MIDI - Track 3

TabIt MIDI - Track 1

TabIt MIDI - Track 2

40

TabIt MIDI - Track 3

TabIt MIDI - Track 1

TabIt MIDI - Track 2

42

TabIt MIDI - Track 3

TabIt MIDI - Track 1

TabIt MIDI - Track 2

43

TabIt MIDI - Track 3

TabIt MIDI - Track 1

TabIt MIDI - Track 2

44

TabIt MIDI - Track 3

TabIt MIDI - Track 1

TabIt MIDI - Track 2

Measure 44: T (1 1 1 1 1 1), A (3 3 3 3 3 3), B (3 3). Measure 45: T (3 3 3 3 3 3), A (0 0 0 0 0 0), B (0 0).

46

TabIt MIDI - Track 3

TabIt MIDI - Track 1

TabIt MIDI - Track 2

Measure 46: T (3 3 3 3 3 3), A (0 0 0 0 0 0), B (0 0). Measure 47: T (3 3 3 3 3 3), A (0 0 0 0 0 0), B (0 0).

47

TabIt MIDI - Track 3

TabIt MIDI - Track 1

TabIt MIDI - Track 2

Measure 47: T (5 5 5 5 5 5), A (7 7 7 7 7 7), B (7 7). Measure 48: T (5 5 5 5 5 5), A (7 7 7 7 7 7), B (7 3 3).

48

TabIt MIDI - Track 3

TabIt MIDI - Track 1

TabIt MIDI - Track 2

Measure 48: T (1 1 1 1 1 1), A (3 3 3 3 3 3), B (3 3). Measure 49: T (3 3 3 3 3 3), A (0 0 0 0 0 0), B (0 0).

50

TabIt MIDI - Track 3

TabIt MIDI - Track 1

TabIt MIDI - Track 2

3 3 3 3 3 3 3 3

A 0 0 0 0 0 0 0 0

B

51

TabIt MIDI - Track 3

TabIt MIDI - Track 1

TabIt MIDI - Track 2

5 5 5 5 5 5 1 1

A 7 7 7 7 7 7 3 3

B

52

TabIt MIDI - Track 3

TabIt MIDI - Track 1

TabIt MIDI - Track 2

1 1 1

A 3 3 3 3 3 3 3 3 0 0 0 0

B 0 0 0 0 5 5 5 5

54

TabIt MIDI - Track 3

TabIt MIDI - Track 1

TabIt MIDI - Track 2

2 2 2 3

A 0 0 0 0 2 2 2 3

B 0 0 0 0 0 0 0 3

5 5 5 5 1

56

TabIt MIDI - Track 3

TabIt MIDI - Track 1

TabIt MIDI - Track 2

T							
A	3	3	3	3	0	0	0
B	3	3	3	3	0	0	0
	1	1	1	1	5	5	5

58

TabIt MIDI - Track 3

TabIt MIDI - Track 1

TabIt MIDI - Track 2

T							
A	0	0	0	0	2	2	2
B	0	0	0	0	0	0	0
	5	5	5	5			1

60

TabIt MIDI - Track 3

TabIt MIDI - Track 1

TabIt MIDI - Track 2

T							
A	3	3	3	3	0	0	0
B	3	3	3	3	0	0	0
	1	1	1	1	5	5	5

62

TabIt MIDI - Track 3

TabIt MIDI - Track 1

TabIt MIDI - Track 2

T							
A	0	0	0	0	2	2	2
B	0	0	0	0	0	0	0
	5	5	5	5			1

64

TabIt MIDI - Track 3

TabIt MIDI - Track 1

TabIt MIDI - Track 2

T							
A	3	3	3	3	0	0	0
B	3	3	3	3	0	0	0
	1	1	1	1	5	5	5

66

TabIt MIDI - Track 3

TabIt MIDI - Track 1

TabIt MIDI - Track 2

T							
A	0	0	0	0	2	2	2
B	0	0	0	0	2	2	3
	5	5	5	5	0	0	1

68

TabIt MIDI - Track 3

TabIt MIDI - Track 1

TabIt MIDI - Track 2

T							
A	3	3	3	3	0	0	0
B	3	3	3	3	0	0	0
	1	1	1	1	5	5	5

70

TabIt MIDI - Track 3

TabIt MIDI - Track 1

TabIt MIDI - Track 2

T							
A	0	0	0	0	2	2	2
B	0	0	0	0	2	2	3
	5	5	5	5	0	0	1

72

TabIt MIDI - Track 3

TabIt MIDI - Track 1

TabIt MIDI - Track 2

74

TabIt MIDI - Track 3

TabIt MIDI - Track 1

TabIt MIDI - Track 2

75

TabIt MIDI - Track 3

TabIt MIDI - Track 1

TabIt MIDI - Track 2

76

TabIt MIDI - Track 3

TabIt MIDI - Track 1

TabIt MIDI - Track 2

78

TabIt MIDI - Track 3

TabIt MIDI - Track 1

TabIt MIDI - Track 2

3 3 3 3 3 3 3 3

0 0 0 0 0 0 0 0

79

TabIt MIDI - Track 3

TabIt MIDI - Track 1

TabIt MIDI - Track 2

5 5 5 5 5 5 3 3

7 7 7 7 7 7 3 3

80

TabIt MIDI - Track 3

TabIt MIDI - Track 1

TabIt MIDI - Track 2

3 3 3 3 3 3 3 3

3 3 3 3 3 3 3 3

0 0 0 0 0 0 0 0

82

TabIt MIDI - Track 3

TabIt MIDI - Track 1

TabIt MIDI - Track 2

3 3 3 3 3 3 3 3

0 0 0 0 0 0 0 0

83

TabIt MIDI - Track 3

TabIt MIDI - Track 1

TabIt MIDI - Track 2

84

TabIt MIDI - Track 3

TabIt MIDI - Track 1

TabIt MIDI - Track 2

86

TabIt MIDI - Track 3

TabIt MIDI - Track 1

TabIt MIDI - Track 2

87

TabIt MIDI - Track 3

TabIt MIDI - Track 1

TabIt MIDI - Track 2

14

117

TabIt MIDI - Track 1

	3 3 3 3 3 3 3 3	5 5 5 5 5 5 1 1	1 1 1 1 1 1 1 1
T			
A	0 0 0 0 0 0 0 0	7 7 7 7 7 7 3 3	3 3 3 3 3 3 3 3
B			

120

TabIt MIDI - Track 1

	3 3 3 3 3 3 3 3	3 3 3 3 3 3 3 3	5 5 5 5 5 5 1 1
T			
A	0 0 0 0 0 0 0 0	0 0 0 0 0 0 0 0	7 7 7 7 7 7 3 3
B			

123

TabIt MIDI - Track 1

	1 1 1 1 1 1 1 1	1	1	1
T				
A	3 3 3 3 3 3 3 3	0 0 0 0	0 0 0 0	
B		0 0 0 0	0 0 0 0	
		5 5 5 5	5 5 5 5	

♩ = 200,000000
8

12

15

20

23

26

29

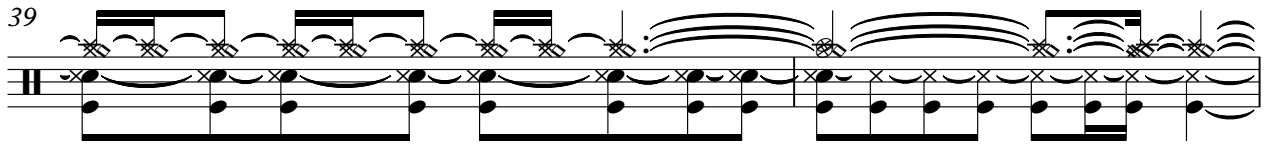
32

35

38

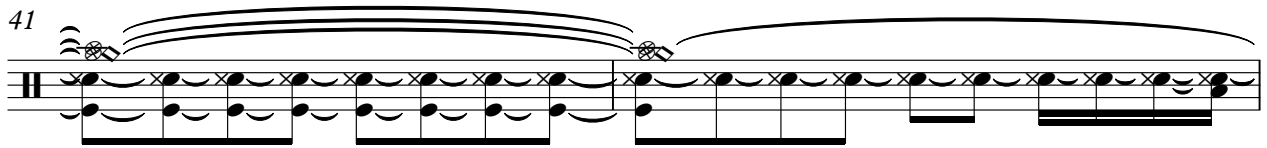
V.S.

39



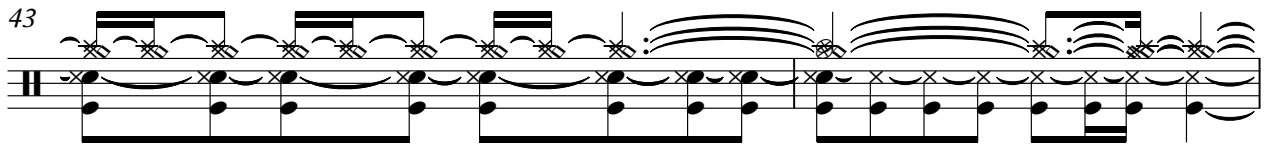
Musical notation for measures 39 and 40. Measure 39 features a sequence of eighth notes on the guitar strings, with a double bar line at the end. Measure 40 begins with a series of sixteenth notes, followed by a series of eighth notes, and ends with a double bar line.

41



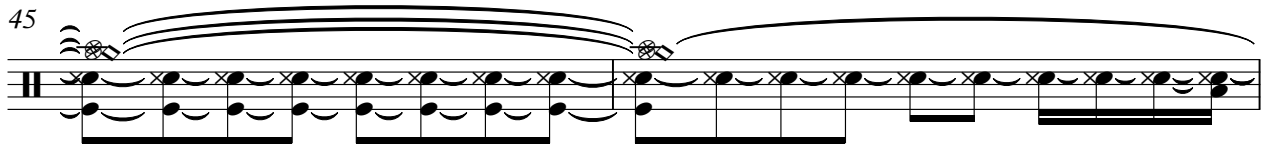
Musical notation for measures 41 and 42. Measure 41 starts with a series of sixteenth notes, followed by a series of eighth notes, and ends with a double bar line. Measure 42 begins with a series of eighth notes, followed by a series of sixteenth notes, and ends with a double bar line.

43



Musical notation for measures 43 and 44. Measure 43 features a sequence of eighth notes on the guitar strings, with a double bar line at the end. Measure 44 begins with a series of sixteenth notes, followed by a series of eighth notes, and ends with a double bar line.

45



Musical notation for measures 45 and 46. Measure 45 starts with a series of sixteenth notes, followed by a series of eighth notes, and ends with a double bar line. Measure 46 begins with a series of eighth notes, followed by a series of sixteenth notes, and ends with a double bar line.

47



Musical notation for measures 47 and 48. Measure 47 features a sequence of eighth notes on the guitar strings, with a double bar line at the end. Measure 48 begins with a series of sixteenth notes, followed by a series of eighth notes, and ends with a double bar line.

49



Musical notation for measures 49 and 50. Measure 49 starts with a series of sixteenth notes, followed by a series of eighth notes, and ends with a double bar line. Measure 50 begins with a series of eighth notes, followed by a series of sixteenth notes, and ends with a double bar line.

51



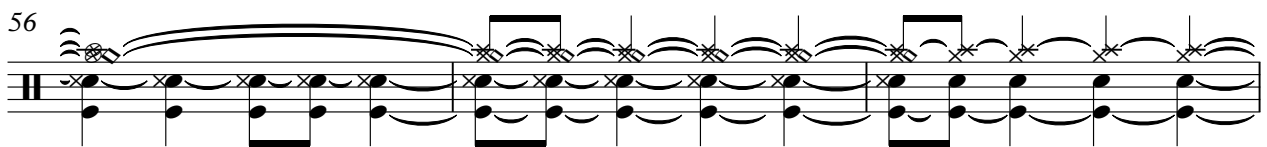
Musical notation for measures 51 and 52. Measure 51 features a sequence of eighth notes on the guitar strings, with a double bar line at the end. Measure 52 begins with a series of sixteenth notes, followed by a series of eighth notes, and ends with a double bar line.

53



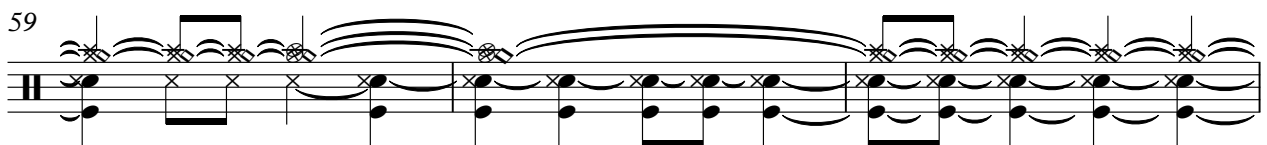
Musical notation for measures 53 and 54. Measure 53 starts with a series of sixteenth notes, followed by a series of eighth notes, and ends with a double bar line. Measure 54 begins with a series of eighth notes, followed by a series of sixteenth notes, and ends with a double bar line.

56



Musical notation for measures 56 and 57. Measure 56 starts with a series of sixteenth notes, followed by a series of eighth notes, and ends with a double bar line. Measure 57 begins with a series of eighth notes, followed by a series of sixteenth notes, and ends with a double bar line.

59



Musical notation for measures 59 and 60. Measure 59 features a sequence of eighth notes on the guitar strings, with a double bar line at the end. Measure 60 begins with a series of sixteenth notes, followed by a series of eighth notes, and ends with a double bar line.

62

65

68

71

74

75

77

79

81


83

V.S.

4

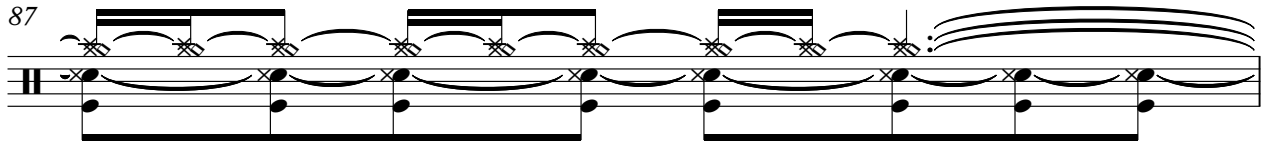
TabIt MIDI - Track 3

85



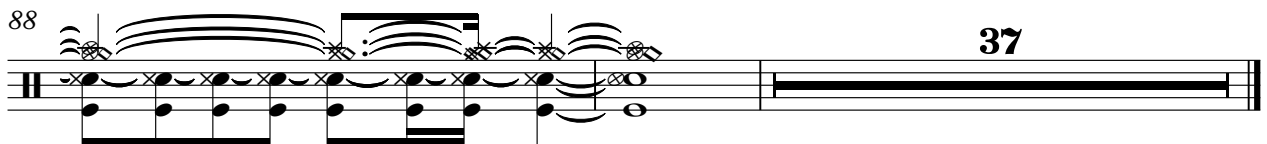
Musical notation for measure 85, featuring a guitar staff with a treble clef and a double bar line. The notation includes a series of notes with a long slur above them, indicating a sustained or legato passage. The notes are primarily eighth and quarter notes, with some beamed eighth notes. There are also some notes with 'x' marks above them, possibly indicating muted notes or specific fretting techniques.

87



Musical notation for measure 87, featuring a guitar staff with a treble clef and a double bar line. The notation includes a series of notes with a long slur above them, indicating a sustained or legato passage. The notes are primarily eighth and quarter notes, with some beamed eighth notes. There are also some notes with 'x' marks above them, possibly indicating muted notes or specific fretting techniques.

88



Musical notation for measure 88, featuring a guitar staff with a treble clef and a double bar line. The notation includes a series of notes with a long slur above them, indicating a sustained or legato passage. The notes are primarily eighth and quarter notes, with some beamed eighth notes. There are also some notes with 'x' marks above them, possibly indicating muted notes or specific fretting techniques. The measure ends with a double bar line and a large number '37' to the right, likely indicating a page or section number.

Pod - Rock The Party

TabIt MIDI - Track 1

♩ = 200,000000

E																					
B																					
G																					
D	0	0	0	0	0	0	0	0	0	2	2	2	3	3	3	3	3	0	0	0	0
A	0	0	0	0	0	0	0	0	0	2	2	2	3	3	3	3	3	0	0	0	0
E										0	0	0	3	3	3	3	3	0	0	0	0
A	5	5	5	5	5	5	5	5	5				1	1	1	1	1	5	5	5	5

7

T	2	2	2	3	3	3	3	3	3	0	0	0	0	0	0	0	0	2	2	2	3
A	2	2	2	3	3	3	3	3	3	0	0	0	0	0	0	0	0	2	2	2	3
B	0	0	0	3	3	3	3	3	3	0	0	0	0	0	0	0	0	0	0	0	3
				1	1	1	1	1	1	5	5	5	5	5	5	5	5				1

13

T																					
A	0	0	0	0	0	0	0	0	0	2	2	2	3	3	3	3	3	0	0	0	0
B	0	0	0	0	0	0	0	0	0	2	2	2	3	3	3	3	3	0	0	0	0
	5	5	5	5	5	5	5	5	5				1	1	1	1	1	5	5	5	5

19

T																					
A	0	0	0	0	0					2	2	2						2	2	2	
B	0	0	0	0	0	0				2	2	2	3	3	3	3	3	0	0	0	3
	5	5	5	5	5	5				0	0	0	1	1	1	1	1	0	0	0	1

25

T																					
A	0	0	0	0	0	0	0	0	0	2	2	2	3	3	3	3	3	0	0	0	0
B	0	0	0	0	0	0	0	0	0	2	2	2	3	3	3	3	3	0	0	0	0
	5	5	5	5	5	5	5	5	5				1	1	1	1	1	5	5	5	5

31

T	2	2	2	3	3	3	3	3	3	0	0	0	0	0	0	0	0	2	2	2	3
A	2	2	2	3	3	3	3	3	3	0	0	0	0	0	0	0	0	2	2	2	3
B	0	0	0	3	3	3	3	3	3	0	0	0	0	0	0	0	0	0	0	0	3
				1	1	1	1	1	1	5	5	5	5	5	5	5	5				1

37

T	3	3	3	3	3	3	3	3	3	5	5	5	5	5	5	1	1	1	1	1	1
A	0	0	0	0	0	0	0	0	0	7	7	7	7	7	7	3	3	3	3	3	3
B																					

41

T	3	3	3	3	3	3	3	3	3	5	5	5	5	5	5	1	1	1	1	1	1
A	0	0	0	0	0	0	0	0	0	7	7	7	7	7	7	3	3	3	3	3	3
B																					

45

T	3	3	3	3	3	3	3	3	3	5	5	5	5	5	5	1	1	1	1	1	1
A	0	0	0	0	0	0	0	0	0	7	7	7	7	7	7	3	3	3	3	3	3
B																					

49

T	3	3	3	3	3	3	3	3	3	5	5	5	5	5	5	1	1	1	1	1	1
A	0	0	0	0	0	0	0	0	0	7	7	7	7	7	7	3	3	3	3	3	3
B																					

V.S.

T										
A	0 0 0 0	0 0 0 0	2 2 2	3 3 3 3	0 0 0 0	0 0 0 0	2 2 2	3 3 3 3	0 0 0 0	0 0 0 0
B	0 0 0 0	0 0 0 0	0 0 0 3	3 3 3 3	0 0 0 0	0 0 0 0	0 0 0 3	3 3 3 3	0 0 0 0	0 0 0 0
	5 5 5 5	5 5 5 5	1	1 1 1 1	5 5 5 5	5 5 5 5	1	1 1 1 1	5 5 5 5	5 5 5 5

59

T										
A	2 2 2	3 3 3 3	0 0 0 0	0 0 0 0	2 2 2	3 3 3 3	0 0 0 0	0 0 0 0	2 2 2	3 3 3 3
B	0 0 0 3	3 3 3 3	0 0 0 0	0 0 0 0	0 0 0 3	3 3 3 3	0 0 0 0	0 0 0 0	0 0 0 3	3 3 3 3
	1	1 1 1 1	5 5 5 5	5 5 5 5	1	1 1 1 1	5 5 5 5	5 5 5 5	1	1 1 1 1

65

T										
A	0 0 0 0	0 0 0 0	2 2 2	3 3 3 3	0 0 0 0	0 0 0 0	0 0 0 0	0 0 0 0	0 0 0 0	0 0 0 0
B	0 0 0 0	0 0 0 0	0 0 0 3	3 3 3 3	0 0 0 0	0 0 0 0	0 0 0 0	0 0 0 0	0 0 0 0	0 0 0 0
	5 5 5 5	5 5 5 5	1	1 1 1 1	5 5 5 5	5 5 5 5	5 5 5 5	5 5 5 5	5 5 5 5	5 5 5 5

71

T										
A	2 2 2	3 3 3 3	0 0 0 0	0 0 0 0	3 3 3 3	3 3 3 3	0 0 0 0	0 0 0 0	5 5 5 5	5 5 5 5
B	0 0 0 3	3 3 3 3	0 0 0 0	0 0 0 0	0 0 0 0	0 0 0 0	0 0 0 0	0 0 0 0	7 7 7 7	7 7 7 7
	1	1 1 1 1	5 5 5 5	5 5 5 5	1 1	1 1	5 5 5 5	5 5 5 5	1 1	1 1

76

T										
A	1 1 1 1	3 3 3 3	3 3 3 3	3 3 3 3	0 0 0 0	0 0 0 0	0 0 0 0	0 0 0 0	5 5 5 5	5 5 5 5
B	3 3 3 3	0 0 0 0	0 0 0 0	0 0 0 0	0 0 0 0	0 0 0 0	0 0 0 0	0 0 0 0	7 7 7 7	7 7 7 7
	1 1 1 1	5 5 5 5	5 5 5 5	5 5 5 5	1 1	1 1	5 5 5 5	5 5 5 5	1 1	1 1

80

T										
A	1 1 1 1	3 3 3 3	3 3 3 3	3 3 3 3	0 0 0 0	0 0 0 0	0 0 0 0	0 0 0 0	5 5 5 5	5 5 5 5
B	3 3 3 3	0 0 0 0	0 0 0 0	0 0 0 0	0 0 0 0	0 0 0 0	0 0 0 0	0 0 0 0	7 7 7 7	7 7 7 7
	1 1 1 1	5 5 5 5	5 5 5 5	5 5 5 5	1 1	1 1	5 5 5 5	5 5 5 5	1 1	1 1

84

T										
A	1 1 1 1	3 3 3 3	3 3 3 3	3 3 3 3	0 0 0 0	0 0 0 0	0 0 0 0	0 0 0 0	5 5 5 5	5 5 5 5
B	3 3 3 3	0 0 0 0	0 0 0 0	0 0 0 0	0 0 0 0	0 0 0 0	0 0 0 0	0 0 0 0	7 7 7 7	7 7 7 7
	1 1 1 1	5 5 5 5	5 5 5 5	5 5 5 5	1 1	1 1	5 5 5 5	5 5 5 5	1 1	1 1

88

T										
A	1 1 1 1	1	1	1	2 2 2	3 3 3 3	0 0 0 0	0 0 0 0	2 2 2	3 3 3 3
B	3 3 3 3	0 0 0 0	0 0 0 0	0 0 0 0	0 0 0 3	3 3 3 3	0 0 0 0	0 0 0 0	0 0 0 3	3 3 3 3
	5 5 5 5	5 5 5 5	5 5 5 5	5 5 5 5	1	1 1 1 1	5 5 5 5	5 5 5 5	1	1 1 1 1

93

T										
A	1	1	1	1	2 2 2	3 3 3 3	0 0 0 0	0 0 0 0	0 0 0 0	0 0 0 0
B	0 0 0 0	0 0 0 0	0 0 0 0	0 0 0 0	0 0 0 3	3 3 3 3	0 0 0 0	0 0 0 0	0 0 0 0	0 0 0 0
	5 5 5 5	5 5 5 5	5 5 5 5	5 5 5 5	1	1 1 1 1	5 5 5 5	5 5 5 5	5 5 5 5	5 5 5 5

100

T										
A	1	1	1	1	2 2 2	3 3 3 3	0 0 0 0	0 0 0 0	0 0 0 0	0 0 0 0
B	0 0 0 0	0 0 0 0	0 0 0 0	0 0 0 0	0 0 0 3	3 3 3 3	0 0 0 0	0 0 0 0	0 0 0 0	0 0 0 0
	5 5 5 5	5 5 5 5	5 5 5 5	5 5 5 5	1	1 1 1 1	5 5 5 5	5 5 5 5	5 5 5 5	5 5 5 5

	1	1	3 3 3 3 3 3 3 3	3 3 3 3 3 3 3 3	5 5 5 5 5 5 1 1
T	2 2 2				
A	2 2 2 3	3 3 3 3	0 0 0 0 0 0 0 0	0 0 0 0 0 0 0 0	7 7 7 7 7 7 3 3
B	0 0 0 1	1 1 1 1			

111

	1 1 1 1 1 1 1 1	3 3 3 3 3 3 3 3	3 3 3 3 3 3 3 3	5 5 5 5 5 5 1 1
T				
A	3 3 3 3 3 3 3 3	0 0 0 0 0 0 0 0	0 0 0 0 0 0 0 0	7 7 7 7 7 7 3 3
B				

115

	1 1 1 1 1 1 1 1	3 3 3 3 3 3 3 3	3 3 3 3 3 3 3 3	5 5 5 5 5 5 1 1
T				
A	3 3 3 3 3 3 3 3	0 0 0 0 0 0 0 0	0 0 0 0 0 0 0 0	7 7 7 7 7 7 3 3
B				

119

	1 1 1 1 1 1 1 1	3 3 3 3 3 3 3 3	3 3 3 3 3 3 3 3
T			
A	3 3 3 3 3 3 3 3	0 0 0 0 0 0 0 0	0 0 0 0 0 0 0 0
B			

122

	5 5 5 5 5 5 1 1	1 1 1 1 1 1 1 1	1	1	1
T					
A	7 7 7 7 7 7 3 3	3 3 3 3 3 3 3 3	0 0 0 0	0 0 0 0	
B			0 0 0 0	0 0 0 0	
			5 5 5 5	5 5 5 5	

♩ = 200,000000

7

12

16

22

26

30

34

40

49

V.S.

55



59



63



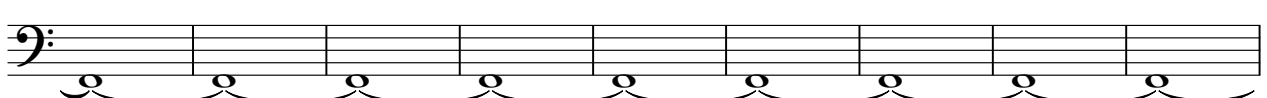
67



71



78



87



93



96

