

Pod - Southtown

♩ = 114,000168

TabIt MIDI - Track 1

TabIt MIDI - Track 2

TabIt MIDI - Track 3

4

TabIt MIDI - Track 1

TabIt MIDI - Track 2

TabIt MIDI - Track 3

7

TabIt MIDI - Track 4

TabIt MIDI - Track 1

TabIt MIDI - Track 2

TabIt MIDI - Track 3

10

TabIt MIDI - Track 4

TabIt MIDI - Track 1

TabIt MIDI - Track 2

TabIt MIDI - Track 3

Measure 10: Tab 4 has a drum pattern. Tab 1 (A) has frets 0, 0, 0, 0, 0, 0, 0, 0. Tab 2 (B) has frets 3, 3, 3, 3, 3, 3, 3, 3. Tab 3 has notes G2, A2, B2, C3, D3, E3, F3, G3.

Measure 11: Tab 4 has a drum pattern. Tab 1 (A) has frets 0, 0, 0, 0, 0, 0, 0, 0. Tab 2 (B) has frets 3, 3, 3, 3, 3, 3, 3, 3. Tab 3 has notes G3, A3, B3, C4, D4, E4, F4, G4.

Measure 12: Tab 4 has a drum pattern. Tab 1 (A) has frets 0, 0, 0, 0, 0, 0, 0, 0. Tab 2 (B) has frets 3, 3, 3, 3, 3, 3, 3, 3. Tab 3 has notes G4, A4, B4, C5, D5, E5, F5, G5.

13

TabIt MIDI - Track 4

TabIt MIDI - Track 1

TabIt MIDI - Track 2

TabIt MIDI - Track 3

Measure 13: Tab 4 has a drum pattern. Tab 1 (A) has frets 0, 0, 0, 0, 0, 0, 0, 0. Tab 2 (B) has frets 3, 3, 3, 3, 3, 3, 3, 3. Tab 3 has notes G2, A2, B2, C3, D3, E3, F3, G3.

Measure 14: Tab 4 has a drum pattern. Tab 1 (A) has frets 0, 0, 0, 0, 0, 0, 0, 0. Tab 2 (B) has frets 3, 3, 3, 3, 3, 3, 3, 3. Tab 3 has notes G3, A3, B3, C4, D4, E4, F4, G4.

Measure 15: Tab 4 has a drum pattern. Tab 1 (A) has frets 0, 0, 0, 0, 0, 0, 0, 0. Tab 2 (B) has frets 3, 3, 3, 3, 3, 3, 3, 3. Tab 3 has notes G4, A4, B4, C5, D5, E5, F5, G5.

16

TabIt MIDI - Track 4

TabIt MIDI - Track 1

TabIt MIDI - Track 2

TabIt MIDI - Track 3

Measure 16: Tab 4 has a drum pattern. Tab 1 (A) has frets 0, 0, 0, 0, 0, 0, 0, 0. Tab 2 (B) has frets 3, 3, 3, 3, 3, 3, 3, 3. Tab 3 has notes G2, A2, B2, C3, D3, E3, F3, G3.

Measure 17: Tab 4 has a drum pattern. Tab 1 (A) has frets 0, 0, 0, 0, 0, 0, 0, 0. Tab 2 (B) has frets 3, 3, 3, 3, 3, 3, 3, 3. Tab 3 has notes G3, A3, B3, C4, D4, E4, F4, G4.

Measure 18: Tab 4 has a drum pattern. Tab 1 (A) has frets 0, 0, 0, 0, 0, 0, 0, 0. Tab 2 (B) has frets 3, 3, 3, 3, 3, 3, 3, 3. Tab 3 has notes G4, A4, B4, C5, D5, E5, F5, G5.

18 3

TabIt MIDI - Track 4

TabIt MIDI - Track 1

TabIt MIDI - Track 2

TabIt MIDI - Track 3

19

TabIt MIDI - Track 4

TabIt MIDI - Track 1

TabIt MIDI - Track 2

TabIt MIDI - Track 3

20

TabIt MIDI - Track 4

TabIt MIDI - Track 1

TabIt MIDI - Track 2

TabIt MIDI - Track 3

21

TabIt MIDI - Track 4

TabIt MIDI - Track 1

TabIt MIDI - Track 2

TabIt MIDI - Track 3

22

TabIt MIDI - Track 4

TabIt MIDI - Track 1

TabIt MIDI - Track 2

TabIt MIDI - Track 3

23

TabIt MIDI - Track 4

TabIt MIDI - Track 1

TabIt MIDI - Track 2

TabIt MIDI - Track 3

24

TabIt MIDI - Track 4

TabIt MIDI - Track 1

TabIt MIDI - Track 2

TabIt MIDI - Track 3

25

TabIt MIDI - Track 4

TabIt MIDI - Track 1

TabIt MIDI - Track 2

TabIt MIDI - Track 3

26

TabIt MIDI - Track 4

TabIt MIDI - Track 1

TabIt MIDI - Track 2

TabIt MIDI - Track 3

27

TabIt MIDI - Track 4

TabIt MIDI - Track 1

TabIt MIDI - Track 2

TabIt MIDI - Track 3

28

TabIt MIDI - Track 4

TabIt MIDI - Track 1

TabIt MIDI - Track 2

TabIt MIDI - Track 3

29

TabIt MIDI - Track 4

TabIt MIDI - Track 1

TabIt MIDI - Track 2

TabIt MIDI - Track 3

30

TabIt MIDI - Track 4

TabIt MIDI - Track 1

TabIt MIDI - Track 2

TabIt MIDI - Track 3

31

TabIt MIDI - Track 4

TabIt MIDI - Track 1

TabIt MIDI - Track 2

TabIt MIDI - Track 3

32

TabIt MIDI - Track 4

TabIt MIDI - Track 1

TabIt MIDI - Track 2

TabIt MIDI - Track 3

33

TabIt MIDI - Track 4

TabIt MIDI - Track 1

TabIt MIDI - Track 2

TabIt MIDI - Track 3

Measure 33: TabIt MIDI - Track 4 (Guitar) has a melodic line with a double bar line. Tracks 1 and 2 (Bass) have a rhythmic line with a double bar line. Track 3 (Drums) has a bass line with a double bar line.

34

TabIt MIDI - Track 4

TabIt MIDI - Track 1

TabIt MIDI - Track 2

TabIt MIDI - Track 3

Measure 34: TabIt MIDI - Track 4 (Guitar) has a melodic line with a double bar line. Tracks 1 and 2 (Bass) have a rhythmic line with a double bar line. Track 3 (Drums) has a bass line with a double bar line.

35

TabIt MIDI - Track 4

TabIt MIDI - Track 1

TabIt MIDI - Track 2

TabIt MIDI - Track 3

Measure 35: TabIt MIDI - Track 4 (Guitar) has a melodic line with a double bar line. Tracks 1 and 2 (Bass) have a rhythmic line with a double bar line. Track 3 (Drums) has a bass line with a double bar line.

36

TabIt MIDI - Track 4

TabIt MIDI - Track 1

TabIt MIDI - Track 2

TabIt MIDI - Track 3

37

TabIt MIDI - Track 4

TabIt MIDI - Track 1

TabIt MIDI - Track 2

TabIt MIDI - Track 3

38

TabIt MIDI - Track 4

TabIt MIDI - Track 1

TabIt MIDI - Track 2

TabIt MIDI - Track 3

39

TabIt MIDI - Track 4

TabIt MIDI - Track 1

TabIt MIDI - Track 2

TabIt MIDI - Track 3

40

TabIt MIDI - Track 4

TabIt MIDI - Track 1

TabIt MIDI - Track 2

TabIt MIDI - Track 3

41

TabIt MIDI - Track 4

TabIt MIDI - Track 1

TabIt MIDI - Track 2

TabIt MIDI - Track 3

42

TabIt MIDI - Track 4

TabIt MIDI - Track 1

TabIt MIDI - Track 2

TabIt MIDI - Track 3

43

TabIt MIDI - Track 4

TabIt MIDI - Track 1

TabIt MIDI - Track 2

TabIt MIDI - Track 3

44

TabIt MIDI - Track 4

TabIt MIDI - Track 1

TabIt MIDI - Track 2

TabIt MIDI - Track 3

45

TabIt MIDI - Track 4

TabIt MIDI - Track 1

TabIt MIDI - Track 2

TabIt MIDI - Track 3

46

TabIt MIDI - Track 4

TabIt MIDI - Track 1

TabIt MIDI - Track 2

TabIt MIDI - Track 3

47

TabIt MIDI - Track 4

TabIt MIDI - Track 1

TabIt MIDI - Track 2

TabIt MIDI - Track 3

48

TabIt MIDI - Track 4

TabIt MIDI - Track 1

TabIt MIDI - Track 2

TabIt MIDI - Track 3

49

TabIt MIDI - Track 4

TabIt MIDI - Track 1

TabIt MIDI - Track 2

TabIt MIDI - Track 3

50

TabIt MIDI - Track 4

TabIt MIDI - Track 1

TabIt MIDI - Track 2

TabIt MIDI - Track 3

51

TabIt MIDI - Track 4

TabIt MIDI - Track 1

TabIt MIDI - Track 2

TabIt MIDI - Track 3

Measure 51: TabIt MIDI - Track 4: G4, A4, B4, C5, G4, A4, B4, C5. TabIt MIDI - Track 1: 0, 0, 0, 0, 0, 0, 0, 0. TabIt MIDI - Track 2: 0, 0, 0, 0, 0, 0, 0, 0. TabIt MIDI - Track 3: G2, A2, B2, C3, G2, A2, B2, C3.

Measure 52: TabIt MIDI - Track 4: G4, A4, B4, C5, G4, A4, B4, C5. TabIt MIDI - Track 1: 0, 0, 0, 0, 0, 0, 0, 0. TabIt MIDI - Track 2: 0, 0, 0, 0, 0, 0, 0, 0. TabIt MIDI - Track 3: G2, A2, B2, C3, G2, A2, B2, C3.

52

TabIt MIDI - Track 4

TabIt MIDI - Track 1

TabIt MIDI - Track 2

TabIt MIDI - Track 3

Measure 53: TabIt MIDI - Track 4: G4, A4, B4, C5, G4, A4, B4, C5. TabIt MIDI - Track 1: 0, 0, 0, 0, 0, 0, 0, 0. TabIt MIDI - Track 2: 0, 0, 0, 0, 0, 0, 0, 0. TabIt MIDI - Track 3: G2, A2, B2, C3, G2, A2, B2, C3.

Measure 54: TabIt MIDI - Track 4: G4, A4, B4, C5, G4, A4, B4, C5. TabIt MIDI - Track 1: 0, 0, 0, 0, 0, 0, 0, 0. TabIt MIDI - Track 2: 0, 0, 0, 0, 0, 0, 0, 0. TabIt MIDI - Track 3: G2, A2, B2, C3, G2, A2, B2, C3.

53

TabIt MIDI - Track 4

TabIt MIDI - Track 1

TabIt MIDI - Track 2

TabIt MIDI - Track 3

Measure 55: TabIt MIDI - Track 4: G4, A4, B4, C5, G4, A4, B4, C5. TabIt MIDI - Track 1: 0, 0, 0, 0, 0, 0, 0, 0. TabIt MIDI - Track 2: 0, 0, 0, 0, 0, 0, 0, 0. TabIt MIDI - Track 3: G2, A2, B2, C3, G2, A2, B2, C3.

Measure 56: TabIt MIDI - Track 4: G4, A4, B4, C5, G4, A4, B4, C5. TabIt MIDI - Track 1: 0, 0, 0, 0, 0, 0, 0, 0. TabIt MIDI - Track 2: 0, 0, 0, 0, 0, 0, 0, 0. TabIt MIDI - Track 3: G2, A2, B2, C3, G2, A2, B2, C3.

54

TabIt MIDI - Track 4

TabIt MIDI - Track 1

TabIt MIDI - Track 2

TabIt MIDI - Track 3

Measure 54: Track 4 has a drum pattern. Tracks 1 and 2 show fret numbers 5, 5, 5, 5 on strings T, A, B. Track 3 has a bass line starting with a half note G2 and a quarter note F2.

Measure 55: Track 4 has a drum pattern. Tracks 1 and 2 show fret numbers 5, 5, 5, 5 on strings T, A, B. Track 3 has a bass line starting with a half note G2 and a quarter note F2.

55

TabIt MIDI - Track 4

TabIt MIDI - Track 1

TabIt MIDI - Track 2

TabIt MIDI - Track 3

Measure 55: Track 4 has a drum pattern. Tracks 1 and 2 show fret numbers 2, 2, 2, 2 on strings T, A, B. Track 3 has a bass line starting with a half note G2 and a quarter note F2.

Measure 56: Track 4 has a drum pattern. Tracks 1 and 2 show fret numbers 0, 0, 0, 0 on strings T, A, B. Track 3 has a bass line starting with a half note G2 and a quarter note F2.

56

TabIt MIDI - Track 4

TabIt MIDI - Track 1

TabIt MIDI - Track 2

TabIt MIDI - Track 3

Measure 56: Track 4 has a drum pattern. Tracks 1 and 2 show fret numbers 5, 5, 5, 5 on strings T, A, B. Track 3 has a bass line starting with a half note G2 and a quarter note F2.

Measure 57: Track 4 has a drum pattern. Tracks 1 and 2 show fret numbers 5, 5, 5, 5 on strings T, A, B. Track 3 has a bass line starting with a half note G2 and a quarter note F2.

57

TabIt MIDI - Track 4

TabIt MIDI - Track 6

TabIt MIDI - Track 1

TabIt MIDI - Track 2

TabIt MIDI - Track 3

58

TabIt MIDI - Track 4

TabIt MIDI - Track 6

TabIt MIDI - Track 1

TabIt MIDI - Track 2

TabIt MIDI - Track 3

59

TabIt MIDI - Track 4

TabIt MIDI - Track 5

TabIt MIDI - Track 6

TabIt MIDI - Track 1

TabIt MIDI - Track 2

TabIt MIDI - Track 3

60

TabIt MIDI - Track 4

TabIt MIDI - Track 5

TabIt MIDI - Track 6

TabIt MIDI - Track 1

TabIt MIDI - Track 2

TabIt MIDI - Track 3

61

TabIt MIDI - Track 4

TabIt MIDI - Track 5

TabIt MIDI - Track 6

TabIt MIDI - Track 1

TabIt MIDI - Track 2

TabIt MIDI - Track 3

62

TabIt MIDI - Track 4

TabIt MIDI - Track 5

TabIt MIDI - Track 6

TabIt MIDI - Track 1

TabIt MIDI - Track 2

TabIt MIDI - Track 3

63

TabIt MIDI - Track 4

TabIt MIDI - Track 5

TabIt MIDI - Track 6

TabIt MIDI - Track 1

TabIt MIDI - Track 2

TabIt MIDI - Track 3

64

TabIt MIDI - Track 4

TabIt MIDI - Track 5

TabIt MIDI - Track 6

TabIt MIDI - Track 1

TabIt MIDI - Track 2

TabIt MIDI - Track 3

65

TabIt MIDI - Track 4

TabIt MIDI - Track 5

TabIt MIDI - Track 6

TabIt MIDI - Track 1

TabIt MIDI - Track 2

TabIt MIDI - Track 3

66

TabIt MIDI - Track 4

TabIt MIDI - Track 1

TabIt MIDI - Track 2

TabIt MIDI - Track 3

67

TabIt MIDI - Track 4

TabIt MIDI - Track 1

TabIt MIDI - Track 2

TabIt MIDI - Track 3

68

TabIt MIDI - Track 4

TabIt MIDI - Track 1

TabIt MIDI - Track 2

TabIt MIDI - Track 3

Measure 68: TabIt MIDI - Track 4 (Guitar) has a double bar line. TabIt MIDI - Track 1 (Guitar) has a double bar line. TabIt MIDI - Track 2 (Guitar) has a double bar line. TabIt MIDI - Track 3 (Bass) has a double bar line.

69

TabIt MIDI - Track 4

TabIt MIDI - Track 1

TabIt MIDI - Track 2

TabIt MIDI - Track 3

Measure 69: TabIt MIDI - Track 4 (Guitar) has a double bar line. TabIt MIDI - Track 1 (Guitar) has a double bar line. TabIt MIDI - Track 2 (Guitar) has a double bar line. TabIt MIDI - Track 3 (Bass) has a double bar line.

70

TabIt MIDI - Track 4

TabIt MIDI - Track 1

TabIt MIDI - Track 2

TabIt MIDI - Track 3

Measure 70: TabIt MIDI - Track 4 (Guitar) has a double bar line. TabIt MIDI - Track 1 (Guitar) has a double bar line. TabIt MIDI - Track 2 (Guitar) has a double bar line. TabIt MIDI - Track 3 (Bass) has a double bar line.

71

TabIt MIDI - Track 4

TabIt MIDI - Track 1

TabIt MIDI - Track 2

TabIt MIDI - Track 3

72

TabIt MIDI - Track 4

TabIt MIDI - Track 1

TabIt MIDI - Track 2

TabIt MIDI - Track 3

74

TabIt MIDI - Track 4

TabIt MIDI - Track 1

TabIt MIDI - Track 2

TabIt MIDI - Track 3

75

TabIt MIDI - Track 4

TabIt MIDI - Track 1

TabIt MIDI - Track 2

TabIt MIDI - Track 3

76

TabIt MIDI - Track 4

TabIt MIDI - Track 1

TabIt MIDI - Track 2

TabIt MIDI - Track 3

77

TabIt MIDI - Track 4

TabIt MIDI - Track 1

TabIt MIDI - Track 2

TabIt MIDI - Track 3

78

TabIt MIDI - Track 4

TabIt MIDI - Track 1

TabIt MIDI - Track 2

TabIt MIDI - Track 3

Measure 78: Track 4 (H) has a melodic line with slurs. Tracks 1 and 2 (TAB) show fret numbers (0, 5, 3) for strings T, A, and B. Track 3 (B) has a bass line with slurs and rests.

Measure 79: Track 4 (H) has a melodic line with slurs. Tracks 1 and 2 (TAB) show fret numbers (0, 5, 3) for strings T, A, and B. Track 3 (B) has a bass line with slurs and rests.

79

TabIt MIDI - Track 4

TabIt MIDI - Track 1

TabIt MIDI - Track 2

TabIt MIDI - Track 3

Measure 79: Track 4 (H) has a melodic line with slurs. Tracks 1 and 2 (TAB) show fret numbers (0, 2, 3) for strings T, A, and B. Track 3 (B) has a bass line with slurs and rests.

Measure 80: Track 4 (H) has a melodic line with slurs. Tracks 1 and 2 (TAB) show fret numbers (0, 2, 3) for strings T, A, and B. Track 3 (B) has a bass line with slurs and rests.

80

TabIt MIDI - Track 4

TabIt MIDI - Track 1

TabIt MIDI - Track 2

TabIt MIDI - Track 3

Measure 80: Track 4 (H) has a melodic line with slurs. Tracks 1 and 2 (TAB) show fret numbers (0, 5, 3) for strings T, A, and B. Track 3 (B) has a bass line with slurs and rests.

Measure 81: Track 4 (H) has a melodic line with slurs. Tracks 1 and 2 (TAB) show fret numbers (0, 5, 3) for strings T, A, and B. Track 3 (B) has a bass line with slurs and rests.

81

TabIt MIDI - Track 4

TabIt MIDI - Track 1

TabIt MIDI - Track 2

TabIt MIDI - Track 3

82

TabIt MIDI - Track 4

TabIt MIDI - Track 1

TabIt MIDI - Track 2

TabIt MIDI - Track 3

83

TabIt MIDI - Track 4

TabIt MIDI - Track 1

TabIt MIDI - Track 2

TabIt MIDI - Track 3

84

TabIt MIDI - Track 4

TabIt MIDI - Track 1

TabIt MIDI - Track 2

TabIt MIDI - Track 3

85

TabIt MIDI - Track 4

TabIt MIDI - Track 1

TabIt MIDI - Track 2

TabIt MIDI - Track 3

86

TabIt MIDI - Track 4

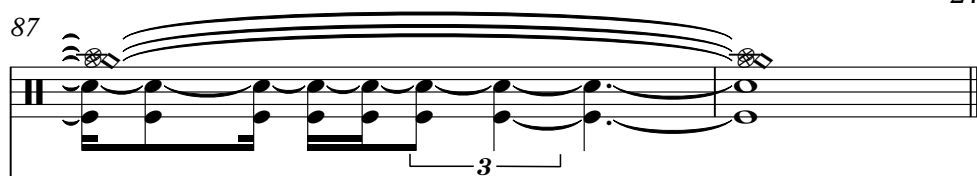
TabIt MIDI - Track 1

TabIt MIDI - Track 2

TabIt MIDI - Track 3

TabIt MIDI - Track 4

87



TabIt MIDI - Track 1

T	A	B
0	0	0
0	0	0
0	0	0
0	0	0
0	0	0
0	0	0

TabIt MIDI - Track 2

T	A	B
0	0	0
0	0	0
0	0	0
0	0	0
0	0	0
0	0	0

TabIt MIDI - Track 3



♩ = 114,000168

7

11

15

18

19

20

21

22

23

24

V.S.

This image displays a MIDI score for a guitar track, labeled 'TabIt MIDI - Track 4'. The score is presented in a standard musical notation format, showing measures 25 through 39. Each measure is represented by a staff with a treble clef and a key signature of one sharp (F#). The notation includes various musical symbols such as notes, rests, and accidentals, indicating the pitch and timing of the music. The measures are numbered 25, 26, 27, 28, 29, 31, 33, 35, 37, and 39, suggesting a non-sequential or edited sequence. The notation is complex, featuring many beamed notes and accidentals, which may represent specific guitar techniques or a highly technical piece of music.

41

42

43

44

45

46

47

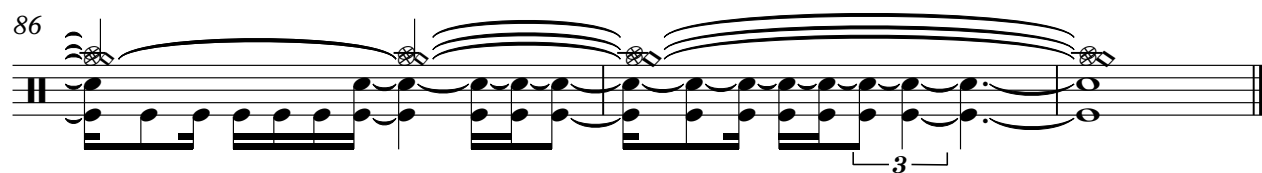
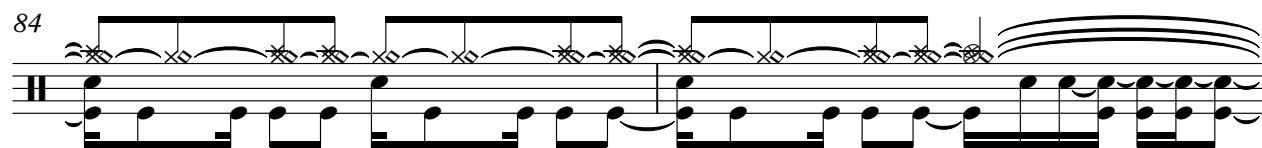
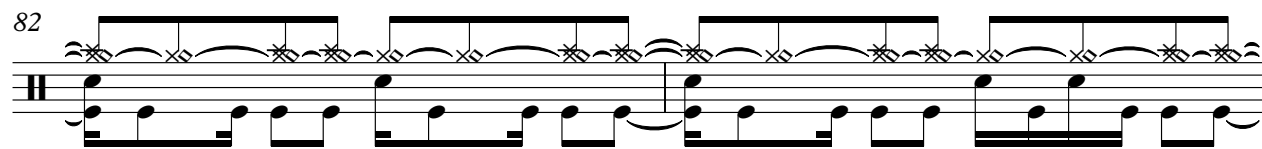
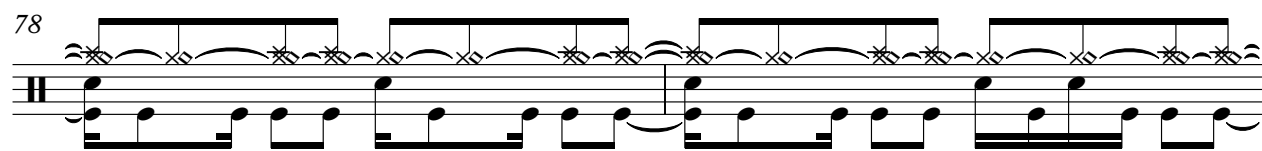
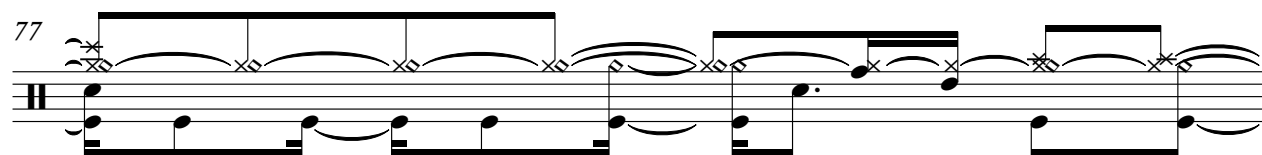
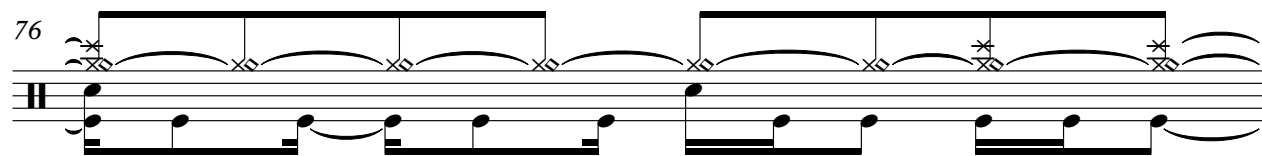
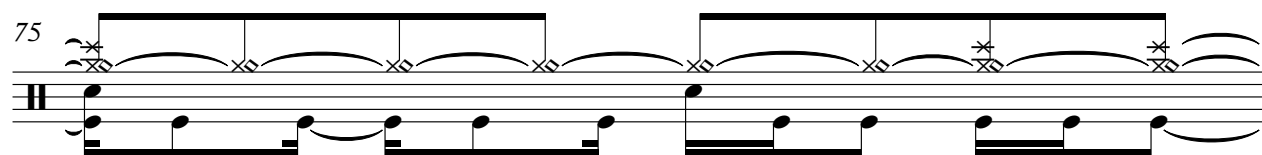
49

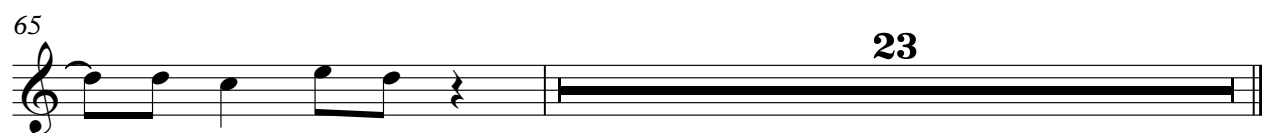
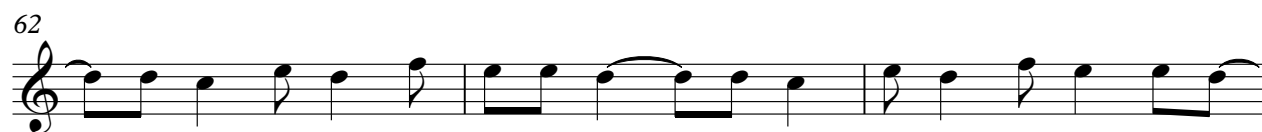
51

53

V.S.

This image displays a MIDI score for a guitar track, labeled 'Track 4'. The score is presented in a standard musical notation format, showing measures 55 through 73. Each measure is numbered at the beginning of its staff. The notation includes various musical symbols such as notes, rests, and accidentals, indicating the pitch and timing of the notes. The score is organized into ten staves, each representing a measure. The notation is complex, featuring many beamed notes and accidentals, suggesting a fast or technically demanding piece of music. The staves are arranged vertically, with measure 55 at the top and measure 73 at the bottom. The overall layout is clean and professional, typical of a MIDI score export.







Pod - Southtown

TabIt MIDI - Track 1

♩ = 114,000168

5

T	D				
A	G				
B	A	2 2 2 2	0 0 0 0 0 0 0 0	0 0 0 0 2 2 2 2	0 0 0 0 0 0 0 0
D	D	0 0 0 0	3 3 3 3 3 3 3 3	3 3 3 3	0 0 0 0 0 0 0 0

5

T				
A				
B	0 0 0 0 2 2 2 2	0 0 0 0 0 0 0 0	0 0 0 0 2 2 2 2	0 0 0 0 0 0 0 0
	0 0 0 0	3 3 3 3 3 3 3 3	3 3 3 3	0 0 0 0 0 0 0 0

9

T				
A				
B	0 0 0 0 2 2 2 2	0 0 0 0 0 0 0 0	0 0 0 0 2 2 2 2	0 0 0 0 0 0 0 0
	0 0 0 0	3 3 3 3 3 3 3 3	3 3 3 3	0 0 0 0 0 0 0 0

13

T				
A				
B	0 0 0 0 2 2 2 2	0 0 0 0 0 0 0 0	0 0 0 0 2 2 2 2	0 0 0 0 0 0 0 0
	0 0 0 0	3 3 3 3 3 3 3 3	3 3 3 3	0 0 0 0 0 0 0 0

17

T	0	0 0 0 0	0 0 0 0
A	2 3 3 3	3 3 3 3 2 2 2 2 0 0 0 0	0 0 0 0 0 2 2 2 2 3 3 3 3
B	0 0 0 0 0 3 3 3	3 3 3 3 3 0 0 0 0 0 0 0 0	0 0 0 0 0 0 0 0 0 3 3 3 3
	0 0 0 0	3 3 3 3	0 0 0 0

20

T	0 0 0 0	0 0 0 0	0 0 0 0
A	3 3 3 3 2 2 2 2 0 0 0 0	0 0 0 0 0 2 2 2 2 3 3 3 3	3 3 3 3 2 2 2 2 0 0 0 0
B	3 3 3 3 3 0 0 0 0 0 0 0 0	0 0 0 0 0 0 0 0 0 3 3 3 3	3 3 3 3 3 0 0 0 0 0 0 0 0
	3 3 3 3	0 0 0 0	3 3 3 3

23

T	0 0 0 0	0 0 0 0	0 0 0 0
A	0 0 0 0 0 2 2 2 2 3 3 3 3	3 3 3 3 2 2 2 2 0 0 0 0	0 0 0 0 0 2 2 2 2 3 3 3 3
B	0 0 0 0 0 0 0 0 0 3 3 3 3	3 3 3 3 3 0 0 0 0 0 0 0 0	0 0 0 0 0 0 0 0 0 3 3 3 3
	0 0 0 0	3 3 3 3	0 0 0 0

26

T	0 0 0 0	0 0 0 0	0 0 0 0
A	3 3 3 3 2 2 2 2 0 0 0 0	0 0 0 0 0 2 2 2 2 3 3 3 3	3 3 3 3 2 2 2 2 0 0 0 0
B	3 3 3 3 3 0 0 0 0 0 0 0 0	0 0 0 0 0 0 0 0 0 3 3 3 3	3 3 3 3 3 0 0 0 0 0 0 0 0
	3 3 3 3	0 0 0 0	3 3 3 3

29

T	0 0 0 0	3	3 2 2 2	2	5 5 5 5	5 5 5 5
A	0 0 0 0 0 2 2 2 2	0	0	2	0 0 0 0	0 0 0 0
B	0 0 0 0 0 0 0 0 0	3	3 2 2 2	2	5 5 5 5	5 5 5 5
	0 0 0 0	0	3 3	3 3	3 3	3 3

33

T	2 2 2 2	2 2 2	5 5 5 5	5 5 5 5	2 2 2 2	2 2 2
A	0 0 0 0	0 0 0	0 0 0 0	0 0 0 0	0 0 0 0	0 0 0
B	2 2 2 2 0 0	2 2 2 3 3 3	5 5 5 5 3 3	5 5 5 5 0 0	2 2 2 2 0 0	2 2 2 3 3 3
	0 0	3 3	3 3	0 0	0 0	3 3

V.S.

2
36

TabIt MIDI - Track 1

T	5 5 5 5	5 5 5 5	2 2 2 2	2 2 2	5 5 5 5	5 5 5 5
A	0 0 0 0	0 0 0 0	0 0 0 0	0 0 0	0 0 0 0	0 0 0 0
B	5 5 5 5	3 3 5 5 5 5	0 0 2 2 2 2	0 0 2 2 2	3 3 3 5 5 5 5	3 3 5 5 5 5 0 0
		3 3	0 0	0 0	3 3 3	3 3 0 0
			0 0	0 0		0 0

39

T	2 2 2 2	2 2 2		0 0 0 0		0 0 0 0
A	0 0 0 0	0 0 0				
B	2 2 2 2	0 0 2 2 2	3 3 3 3	3 3 3 3 3 3	2 2 2 2 0 0 0	0 0 0 0 0 2 2 2 2 3 3 3
		0 0	3 3 3 3	3 3 3 3 3	0 0 0 0 0 0 0	0 0 0 0 0 0 0 0 0 3 3 3
			3 3 3 3	3 3 3 3 3	0 0 0	0 0 0 0 0 3 3 3

42

T		0 0 0 0		0 0 0 0		0 0 0 0
A						
B	3 3 3 3 3 3	2 2 2 2 0 0 0	0 0 0 0 0 2 2 2 2 3 3 3	3 3 3 3 3 3 0 0 0 0 0 0 0	3 3 3 3 3 2 2 2 2 0 0 0	3 3 3 3 3 0 0 0 0 0 0 0
	3 3 3 3 3	0 0 0 0 0 3 3 3	0 0 0 0 0 3 3 3	0 0 0 0 0 3 3 3	3 3 3 3 3	0 0 0
			0 0 0 0 0	0 0 0 0 0		0 0 0

45

T		0 0 0 0		0 0 0 0		0 0 0 0	3
A							0
B	0 0 0 0 0 2 2 2 2 3 3 3	3 3 3 3 3 2 2 2 2 0 0 0	3 3 3 3 3 0 0 0 0 0 0 0	0 0 0 0 0 2 2 2 2	0 0 0 0 0 2 2 2 2	0 0 0 0 0	3
	0 0 0 0 0 0 0 0 0 3 3 3	3 3 3 3 3 0 0 0 0 0 0 0	3 3 3 3 3 0 0 0 0 0 0 0	0 0 0 0 0 0 0 0 0	0 0 0 0 0 0 0 0 0	0 0 0 0 0	0

48

T	3 2 2 2	2	5 5 5 5	5 5 5 5	2 2 2 2	2 2 2
A	0		0 0 0 0	0 0 0 0	0 0 0 0	0 0 0
B	3 2 2 2	2 3 3	5 5 5 5 3 3	5 5 5 5 0 0	2 2 2 2 0 0	2 2 2 3 3 3
		3 3	3 3	3 3	0 0	3 3 3
				0 0	0 0	3 3

52

T	5 5 5 5	5 5 5 5	2 2 2 2	2 2 2	5 5 5 5	5 5 5 5
A	0 0 0 0	0 0 0 0	0 0 0 0	0 0 0	0 0 0 0	0 0 0 0
B	5 5 5 5	3 3 5 5 5 5	0 0 2 2 2 2	0 0 2 2 2	3 3 3 5 5 5 5	3 3 5 5 5 5 0 0
		3 3	0 0	0 0	3 3 3	3 3 0 0
			0 0	0 0		0 0

55

T	2 2 2 2	2 2 2	5 5 5 5	5 5 5 5	2 2 2 2	2 2 2	2
A	0 0 0 0	0 0 0	0 0 0 0	0 0 0 0	0 0 0 0	0 0 0	0
B	2 2 2 2	0 0 2 2 2	3 3 3 5 5 5 5	3 3 5 5 5 5	0 0 2 2 2 2	0 0 2 2 2	3 0 2
		0 0	3 3	3 3	0 0	0 0	0
			3 3	3 3	0 0		

58

T	3	2	3	2	2	3	2	3	2	2	3	2	3	2	2
A	0	0	0	0	0	0	0	0	0	0	0	0	0	0	0
B	3	2	3	2	2	3	2	3	2	2	3	2	3	2	2
	0		0		0		0		0		0		0		0

61

T	3	2	3	2	2	3	2	3	2	2	3	2	3	2	2
A	0	0	0	0	0	0	0	0	0	0	0	0	0	0	0
B	3	2	3	2	2	3	2	3	2	2	3	2	3	2	2
	0		0		0		0		0		0		0		0

64

T	3	2	3	2	2	3	2	3	2						
A	0	0	0	0	0	0	0	0	0						
B	3	2	3	2	2	3	2	3	2	0 2	2	3 0 2	3 3 3	3 0 2	2
										0 2	2	3 0 2	3 3 3	3 0 2	2
										0 2					

Pod - Southtown

TabIt MIDI - Track 2

♩ = 114,000168

5

T	D				
A	A				
B	D	2 2 2 2	0 0 0 0 0 0 0 0	0 0 0 0 2 2 2 2	0 0 0 0 0 0 0 0
D	A	0 0 0 0	3 3 3 3 3 3 3 3	3 3 3 3	0 0 0 0 0 0 0 0

5

T				
A				
B	0 0 0 0	2 2 2 2	0 0 0 0 0 0 0 0	0 0 0 0 2 2 2 2
D	0 0 0 0	0 0 0 0	3 3 3 3 3 3 3 3	3 3 3 3

9

T				
A				
B	0 0 0 0	2 2 2 2	0 0 0 0 0 0 0 0	0 0 0 0 2 2 2 2
D	0 0 0 0	0 0 0 0	3 3 3 3 3 3 3 3	3 3 3 3

13

T				
A				
B	0 0 0 0	2 2 2 2	0 0 0 0 0 0 0 0	0 0 0 0 2 2 2 2
D	0 0 0 0	0 0 0 0	3 3 3 3 3 3 3 3	3 3 3 3

17

T	0		0 0 0 0		0 0 0 0
A					
B	0 0 0 0	2 3 3 3	3 3 3 3 3 2 2 2 2 0 0 0	0 0 0 0 0 0 0 0	0 0 0 0 2 2 2 2 3 3 3
D	0 0 0 0	3 3 3 3	3 3 3 3 3 0 0 0 0 0 0 0	0 0 0 0	0 0 0 0 0 0 0 0 3 3 3

20

T		0 0 0 0		0 0 0 0		0 0 0 0
A						
B	3 3 3 3 3	2 2 2 2 0 0 0	0 0 0 0 0 0 0 0	0 0 0 0 2 2 2 2 3 3 3	3 3 3 3 3	2 2 2 2 0 0 0
D	3 3 3 3 3	0 0 0 0 0 0 0	0 0 0 0	0 0 0 0 0 0 0 3 3 3	3 3 3 3 3	0 0 0 0 0 0 0

23

T		0 0 0 0		0 0 0 0		0 0 0 0
A						
B	0 0 0 0 0	2 2 2 2 3 3 3	3 3 3 3 3 2 2 2 2 0 0 0	0 0 0 0 0 0 0 0	0 0 0 0 2 2 2 2 3 3 3	0 0 0 0 0 0 0
D	0 0 0 0 0	0 0 0 0 3 3 3	3 3 3 3 3 0 0 0 0 0 0 0	0 0 0 0	0 0 0 0 0 0 0 3 3 3	0 0 0 0 3 3 3

26

T		0 0 0 0		0 0 0 0		0 0 0 0
A						
B	3 3 3 3 3	2 2 2 2 0 0 0	0 0 0 0 0 0 0 0	0 0 0 0 2 2 2 2 3 3 3	3 3 3 3 3	2 2 2 2 0 0 0
D	3 3 3 3 3	0 0 0 0 0 0 0	0 0 0 0	0 0 0 0 0 0 0 3 3 3	3 3 3 3 3	0 0 0 0 0 0 0

29

T		0 0 0 0	3	3 2 2 2	2	5 5 5 5	5 5 5 5
A			0	0	2	0 0 0 0	0 0 0 0
B	0 0 0 0 0	2 2 2 2	3	3 2 2 2	2	5 5 5 5	5 5 5 5
D	0 0 0 0 0	0 0 0 0	0	0 0 0 0	0	3 3 3 3	3 3 3 3

33

T	2 2 2 2	2 2 2	5 5 5 5	5 5 5 5	2 2 2 2	2 2 2
A	0 0 0 0	0 0 0	0 0 0 0	0 0 0 0	0 0 0 0	0 0 0
B	2 2 2 2	0 0 2 2 2	5 5 5 5	5 5 5 5	2 2 2 2	0 0 2 2 2
D	0 0	3 3 3	3 3	3 3	0 0	3 3 3

V.S.

2

TabIt MIDI - Track 2

36

T	5 5 5 5	5 5 5 5	2 2 2 2	2 2 2	5 5 5 5	5 5 5 5
A	0 0 0 0	0 0 0 0	0 0 0 0	0 0 0	0 0 0 0	0 0 0 0
B	5 5 5 5	3 3 5 5 5 5	0 0 2 2 2 2	0 0 2 2 2	3 3 3 3	5 5 5 5
		3 3	0 0	0 0	3 3	0 0
		3 3	0 0	0 0	3 3	0 0

39

T	2 2 2 2	2 2 2		0 0 0 0		0 0 0 0
A	0 0 0 0	0 0 0				
B	2 2 2 2	0 0 2 2 2	3 3 3 3	3 3 3 3	2 2 2 2	0 0 0 0
		0 0	3 3 3 3	3 3 3 3	0 0 0 0	0 0 0 0
		0 0	3 3 3 3	3 3 3 3	0 0 0 0	0 0 0 0

42

T		0 0 0 0		0 0 0 0		0 0 0 0
A						
B	3 3 3 3	2 2 2 2	0 0 0 0	0 0 0 0	2 2 2 2	3 3 3 3
	3 3 3 3	0 0 0 0	0 0 0 0	0 0 0 0	0 0 0 0	0 0 0 0
	3 3 3 3	0 0 0 0	0 0 0 0	0 0 0 0	0 0 0 0	0 0 0 0

45

T		0 0 0 0		0 0 0 0		0 0 0 0
A						
B	0 0 0 0	2 2 2 2	3 3 3 3	3 3 3 3	2 2 2 2	0 0 0 0
	0 0 0 0	0 0 0 0	3 3 3 3	3 3 3 3	0 0 0 0	0 0 0 0
	0 0 0 0	0 0 0 0	3 3 3 3	3 3 3 3	0 0 0 0	0 0 0 0

48

T	3 2 2 2	2	5 5 5 5	5 5 5 5	2 2 2 2	2 2 2
A	0		0 0 0 0	0 0 0 0	0 0 0 0	0 0 0
B	3 2 2 2	2	5 5 5 5	5 5 5 5	2 2 2 2	0 0 2 2 3 3 3
			3 3	3 3	0 0	0 0
			3 3	3 3	0 0	3 3 3

52

T	5 5 5 5	5 5 5 5	2 2 2 2	2 2 2	5 5 5 5	5 5 5 5
A	0 0 0 0	0 0 0 0	0 0 0 0	0 0 0	0 0 0 0	0 0 0 0
B	5 5 5 5	3 3 5 5 5 5	0 0 2 2 2 2	0 0 2 2 2	3 3 3 3	5 5 5 5
		3 3	0 0	0 0	3 3	0 0
		3 3	0 0	0 0	3 3	0 0

55

T	2 2 2 2	2 2 2	5 5 5 5	5 5 5 5	2 2 2 2	2 2 2
A	0 0 0 0	0 0 0	0 0 0 0	0 0 0 0	0 0 0 0	0 0 0
B	2 2 2 2	0 0 2 2 2	5 5 5 5	5 5 5 5	2 2 2 2	0 0 2 2 3 2
		0 0	3 3	3 3	0 0	0 0
		0 0	3 3	3 3	0 0	0 0

58

T	3	2	3	2	2	3	2	3	2	2	3	2	3	2	2
A	0	0	0	0	0	0	0	0	0	0	0	0	0	0	0
B	3	2	3	2	2	3	2	3	2	2	3	2	3	2	2
	0		0	0	0	0		0	0	0	0		0	0	0

61

T	3	2	3	2	2	3	2	3	2	2	3	2	3	2	2
A	0	0	0	0	0	0	0	0	0	0	0	0	0	0	0
B	3	2	3	2	2	3	2	3	2	2	3	2	3	2	2
	0		0	0	0	0		0	0	0	0		0	0	0

64

T	3	2	3	2	2	3	2	3	2							
A	0	0	0	0	0	0	0	0	0							
B	3	2	3	2	2	3	2	3	2	0 2	2	3 0	2 3	3 3	3 0	2
										0 2	2	3 0	2 3	3 3	3 0	2
	0		0	0	0	0		0	0	0 2		3 0	2 3	3 3	3 0	2

♩ = 114,000168

6

11

16

19

21

23

25

27

29

V.S.

The bass line of 'The Rose Tree' is written in 3/4 time. It consists of three measures. The first measure contains a quarter rest, followed by a quarter note G2, an eighth note F2, and an eighth note E2. The second measure contains a quarter rest, followed by a quarter note D2, an eighth note C2, and an eighth note B1. The third measure contains a quarter rest, followed by a quarter note A1, an eighth note G1, and an eighth note F1. The key signature has one flat (Bb), and the time signature is 3/4.

36

Measure 36 in the bass clef. The notation includes a bass clef, a key signature of one flat (B-flat), and a 4/4 time signature. The melody consists of eighth and quarter notes, with some beamed eighth notes. The bass line features a prominent eighth-note pattern. The measure concludes with a double bar line.

[illegible]

The bass line of 'The Rose Tree' is written on a single staff with a bass clef. It begins with a treble clef and a key signature of one flat (B-flat). The melody consists of a series of eighth and sixteenth notes, with a repeat sign at the end.

The bass line of 'The Rose Tree' is written on a single staff with a bass clef. It begins with a treble clef and a key signature of one flat (B-flat). The melody consists of a series of eighth and sixteenth notes, with a repeat sign at the end.

[illegible][illegible]

The bass line of 'The Rose Tree' is written in 3/4 time. It consists of three measures. The first measure contains a quarter rest, followed by a quarter note G2, an eighth note F2, and a quarter note E2. The second measure contains a quarter rest, followed by a quarter note D2, an eighth note C2, and a quarter note B1. The third measure contains a quarter rest, followed by a quarter note A1, an eighth note G1, and a quarter note F1. The key signature has one flat (Bb), and the time signature is 3/4.

54

Measure 54 in the bass clef. The notation includes a series of eighth and sixteenth notes, with some beamed together, and a final quarter note. The key signature has one flat (B-flat).

Musical notation for the bass line of 'The Rose Tree'. The notation is written on a single staff with a bass clef. It consists of a series of eighth and sixteenth notes, with some notes beamed together. The melody is simple and repetitive, following the rhythm of the lyrics.



V.S.

4

TabIt MIDI - Track 3

85



87

