

Radiohead - Bullet Proof

♩ = 80,999969

Steel

4

Steel

7

Drums

Steel

Track 11

10

Drums

Track 1

Steel

Bass

The image displays a musical score for the song "Bullet Proof" by Radiohead. The score is organized into four systems, each separated by a double bar line. The first system (measures 1-3) features a "Steel" staff in 4/4 time with a tempo of 80,999969. It contains complex chordal textures and a triplet in the third measure. The second system (measures 4-6) continues the "Steel" part. The third system (measures 7-9) includes a "Drums" staff with a snare drum and a "Steel" staff. The fourth system (measures 10-12) features a "Drums" staff with a snare drum, a "Track 1" staff, a "Steel" staff, and a "Bass" staff. The score is written in treble clef for the guitar parts and bass clef for the bass part. The key signature has one sharp (F#).

12

Drums

Track 1

Steel

Bass



14

Drums

Track 1

Steel

Bass



16

Drums

Track 1

Steel

Bass

18

Wind!

Drums

Track 1

Steel

Bass



20

Wind!

Drums

Track 1

Steel

Bass

22

Wind!

Drums

Track 1

Steel

Bass

Howl



24

Drums

Track 1

Steel

Bass

26

Drums

Track 1

Steel

Bass

Detailed description: This system contains measures 26 and 27. The Drums part features a consistent rhythmic pattern of eighth notes. Track 1, Steel, and Bass parts are written in treble and bass clefs respectively, with various chordal and melodic figures. Measure 27 includes a double bar line with a repeat sign and a fermata over the final note.



28

Drums

Drums

Track 1

Steel

Bass

Detailed description: This system contains measures 28, 29, 30, and 31. The top two staves are labeled 'Drums' and show a rhythmic pattern. Track 1, Steel, and Bass parts continue with complex musical notation, including triplets and various rhythmic values. Measure 31 ends with a double bar line.

30

Wind!

Drums

Track 1

Steel

Bass



32

Wind!

Drums

Steel

Electric

Bass

34

Wind!

Wind!

Drums

Steel

Electric

Bass

3



36

Wind!

Drums

Steel

Electric

Bass

38

Wind!

Drums

Steel

Electric

Bass



40

Wind!

Drums

Track 1

Steel

Bass

42

Drums

Track 1

Steel

Bass

Detailed description: This musical score covers measures 42 to 45. The Drums part features a consistent rhythmic pattern of eighth notes. Track 1 and Steel both play complex chords and melodic lines, with the Steel part including triplets and a 7/7 time signature. The Bass part provides a simple harmonic foundation with quarter and eighth notes.



44

Drums

Track 1

Steel

Bass

Detailed description: This musical score covers measures 44 to 47. The Drums part continues with its rhythmic pattern. Track 1 and Steel play more intricate chordal and melodic passages, with the Steel part featuring a 7/7 time signature and triplets. The Bass part continues with its harmonic support, including a triplet in the final measure.

46

Drums

Drums

Track 1

Steel

Bass



48

Wind!

Drums

Track 1

Steel

Electric

Bass

50

Wind!

Drums

Steel

Electric

Bass

Detailed description: This block contains the musical notation for measures 50 and 51. It features five staves: Wind! (bass clef), Drums (drum set), Steel (treble clef), Electric (treble clef), and Bass (bass clef). The Wind! part has a long note with a slur over it. The Drums part shows a consistent rhythmic pattern. The Steel part has complex chords and melodic lines. The Electric part has a fast, rhythmic pattern. The Bass part has a simple, steady line.



52

Wind!

Wind!

Drums

Steel

Electric

Bass

Detailed description: This block contains the musical notation for measures 52 and 53. It features five staves: two Wind! staves (bass clef), Drums (drum set), Steel (treble clef), Electric (treble clef), and Bass (bass clef). The first Wind! staff is silent. The second Wind! staff has a long note with a slur. The Drums part continues with its rhythmic pattern. The Steel part has complex chords and melodic lines. The Electric part has a fast, rhythmic pattern with a triplet in measure 53. The Bass part has a simple, steady line.

54

Wind!

Drums

Steel

Electric

Bass

Detailed description: This musical score block covers measures 54 and 55. It features five staves: Wind!, Drums, Steel, Electric, and Bass. The Wind! staff uses a bass clef and contains a series of 'x' marks under a long horizontal line, indicating a sustained or muted sound. The Drums staff uses a drum clef and shows a rhythmic pattern of eighth and quarter notes. The Steel staff uses a treble clef and a key signature of one sharp (F#), with complex chordal and melodic patterns. The Electric staff uses a treble clef and shows a rhythmic pattern with many eighth notes and rests. The Bass staff uses a bass clef and contains a simple bass line with quarter and eighth notes.



56

Wind!

Drums

Steel

Electric

Bass

Detailed description: This musical score block covers measures 56 and 57. It features five staves: Wind!, Drums, Steel, Electric, and Bass. The Wind! staff uses a bass clef and contains a series of 'x' marks under a long horizontal line. The Drums staff uses a drum clef and shows a rhythmic pattern. The Steel staff uses a treble clef and a key signature of one sharp (F#), with complex chordal and melodic patterns. The Electric staff uses a treble clef and shows a rhythmic pattern with eighth notes and rests, including a triplet of eighth notes in measure 57. The Bass staff uses a bass clef and contains a simple bass line with quarter and eighth notes.

58

Wind!

Drums

Steel

Electric

Bass

Detailed description: This block contains the musical notation for measures 58 and 59. It features five staves: Wind! (bass clef), Drums (drum clef), Steel (treble clef), Electric (treble clef), and Bass (bass clef). The Wind! part consists of a series of 'x' marks on a staff, indicating a sustained note. The Drums part shows a steady rhythm with eighth notes. The Steel part has a complex melodic line with many beamed notes. The Electric part has a similar complex melodic line with many beamed notes. The Bass part has a simple line of quarter notes.



60

Wind!

Drums

Steel

Electric

Bass

Detailed description: This block contains the musical notation for measures 60 and 61. It features five staves: Wind! (bass clef), Drums (drum clef), Steel (treble clef), Electric (treble clef), and Bass (bass clef). The Wind! part consists of a series of 'x' marks on a staff, indicating a sustained note. The Drums part shows a steady rhythm with eighth notes. The Steel part has a complex melodic line with many beamed notes. The Electric part has a similar complex melodic line with many beamed notes, including a triplet in measure 61. The Bass part has a simple line of quarter notes.

62

Wind!

Drums

Steel

Electric

Bass

Detailed description: This musical score covers measures 62 and 63. The Wind part (bass clef) features a long, sustained note with a series of 'x' marks below the staff, indicating a specific playing technique. The Drums part (percussion clef) shows a rhythmic pattern of eighth and quarter notes. The Steel part (treble clef) consists of complex chords and melodic lines. The Electric part (treble clef) has a rhythmic pattern with many rests. The Bass part (bass clef) plays a simple, steady line.



64

Wind!

Drums

Steel

Electric

Bass

Detailed description: This musical score covers measures 64, 65, and 66. The Wind part (bass clef) has a long note in measure 64 followed by rests. The Drums part (percussion clef) is mostly silent with some initial activity in measure 64. The Steel part (treble clef) shows a change in chord structure in measure 64. The Electric part (treble clef) has a melodic line in measure 64. The Bass part (bass clef) is mostly silent.

Wind!

Radiohead - Bullet Proof

♩ = 80,999969

34

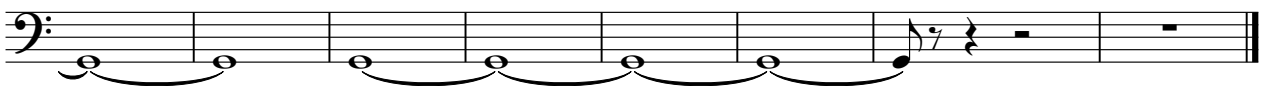


40

12



59



Wind!

Radiohead - Bullet Proof

♩ = 80,999969

17

8

Musical notation for the first system of 'Wind!' in bass clef, 4/4 time. It consists of six measures. The first measure has a whole rest. The second measure has a whole rest. The third, fourth, and fifth measures each contain a quarter note, which are beamed together. The sixth measure has a whole rest. The number '17' is above the first measure and '8' is above the sixth measure.

31

12

Musical notation for the second system of 'Wind!' in bass clef, 4/4 time. It consists of six measures. The first measure has a whole rest. The second, third, and fourth measures each contain a quarter note, which are beamed together. The fifth measure has a whole rest. The sixth measure has a whole rest. The number '31' is above the first measure and '12' is above the sixth measure.

48

14

Musical notation for the third system of 'Wind!' in bass clef, 4/4 time. It consists of six measures. The first measure has a whole rest. The second, third, and fourth measures each contain a quarter note, which are beamed together. The fifth measure has a whole rest. The sixth measure has a whole rest. The number '48' is above the first measure and '14' is above the sixth measure.

Radiohead - Bullet Proof

Drums

♩ = 80,999969
8

12

15

18

21

24

27

30

33

37

V.S.

41

44

47

50

53

56

59

62

Drums

Radiohead - Bullet Proof

♩ = 80,999969

27

A musical staff with a 4/4 time signature. A thick black line spans the entire staff, with the number 27 centered above it. The staff ends with a double bar line and a fermata symbol.

29

17 20

A musical staff with two measures. The first measure is marked with the number 17 and the second with 20. Both measures are filled with thick black lines. The staff ends with a double bar line and a fermata symbol.

Radiohead - Bullet Proof

Track 1

♩ = 80,999969

9

12

15

18

21

24

27

30

8

40

43

46

48

18

Radiohead - Bullet Proof

Steel

♩ = 80,999969

4

8

12

15

18

21

24

27

30

V.S.

33

36

38

41

44

47

50

53

56

59

Steel

62

2

Radiohead - Bullet Proof

Electric

♩ = 80,999969

31

33

35

37

40

9

51

54

56

58

60

V.S.

2

Electric

62

Musical notation for measure 62, featuring a treble clef and a guitar-specific rhythmic pattern with slurs and accents.

63

Musical notation for measure 63, featuring a treble clef, a guitar-specific rhythmic pattern, and a double bar line with a '2' indicating a second ending.

Radiohead - Bullet Proof

Bass

♩ = 80,999969



Track 11

Radiohead - Bullet Proof

♩ = 80,999969

8 **57**

Howl

Radiohead - Bullet Proof

♩ = 80,999969

21 **44**