

Babyface - When Can I See You Again

♩ = 88,000023

4/4

congo's

guitar

5

guitar

melody

8

guitar

melody

11

guitar

melody

14

tamb.

guitar

melody

17

tamb.

guitar

melody

20

congo's

tamb.

guitar

melody

22

congo's

tamb.

guitar

melody

24

congo's

tamb.

guitar

melody

26

congo's

tamb.

guitar

melody

28

congo's

tamb.

guitar

melody

31

congo's

tamb.

guitar

melody

34

congo's

tamb.

guitar

melody

37

congo's

tamb.

guitar

melody

40

tamb.

guitar

melody

43

congo's

tamb.

guitar

melody

45

congo's

tamb.

guitar

melody

47

congo's

tamb.

guitar

melody

Detailed description: This system covers measures 47 and 48. The 'congo's' part consists of a repeating rhythmic pattern of eighth notes with a slight delay. The 'tamb.' part plays a steady eighth-note accompaniment. The 'guitar' part features a complex, syncopated accompaniment with several triplet markings. The 'melody' part is a single-line melody with some grace notes and a triplet in measure 48.

49

congo's

tamb.

guitar

melody

Detailed description: This system covers measures 49 and 50. The 'congo's' and 'tamb.' parts continue their respective rhythmic patterns. The 'guitar' part has a complex accompaniment with several triplet markings. The 'melody' part continues with grace notes and a triplet in measure 50.

51

congo's

tamb.

guitar

melody

Detailed description: This system covers measures 51 and 52. The 'congo's' and 'tamb.' parts continue their respective rhythmic patterns. The 'guitar' part has a complex accompaniment with several triplet markings. The 'melody' part continues with grace notes and a triplet in measure 52.

53

congo's

tamb.

guitar

melody

Detailed description: This system covers measures 53, 54, and 55. The Congo's part consists of a repeating rhythmic pattern of eighth notes. The tambourine part plays a steady eighth-note accompaniment. The guitar part features a triplet of eighth notes in measure 53, followed by a melodic line with slurs and accents. The melody part has a long note in measure 53, followed by a melodic line with slurs and accents.

56

congo's

tamb.

guitar

Detailed description: This system covers measures 56, 57, and 58. The Congo's and tambourine parts continue their respective rhythmic patterns. The guitar part has a melodic line with slurs and accents, including a triplet of eighth notes in measure 57.

59

congo's

tamb.

guitar

melody

Detailed description: This system covers measures 59, 60, and 61. The Congo's and tambourine parts continue their respective rhythmic patterns. The guitar part has a melodic line with slurs and accents, including a triplet of eighth notes in measure 61. The melody part has a melodic line with slurs and accents.

61

congo's

tamb.

guitar

melody

63

congo's

tamb.

guitar

melody

65

congo's

tamb.

guitar

melody

67

congo's

tamb.

guitar

melody

69

congo's

tamb.

guitar

melody

71

congo's

tamb.

guitar

melody

74

congo's

tamb.

guitar

melody

Detailed description: This system covers measures 74, 75, and 76. The 'congo's' part consists of a repeating rhythmic pattern of eighth notes with accents. The 'tamb.' part plays a steady eighth-note accompaniment. The 'guitar' part features a melodic line with eighth notes and rests, including a sharp sign in the second measure. The 'melody' part has a few notes in the first measure followed by rests.

77

congo's

tamb.

guitar

Detailed description: This system covers measures 77, 78, and 79. The 'congo's' and 'tamb.' parts continue their respective rhythmic patterns. The 'guitar' part has a more intricate melodic line with eighth notes, some beamed together, and rests. A sharp sign is present in the first measure.

80

congo's

tamb.

guitar

Detailed description: This system covers measures 80, 81, and 82. The 'congo's' part ends in measure 80. The 'tamb.' part continues until measure 81. The 'guitar' part features a long, sustained chord in measure 80, followed by a melodic line in measure 81 and rests in measure 82.

congo's

Babyface - When Can I See You Again

♩ = 88,000023

16

21

26

31

36

4

44

49

52

2

congo's

55



60



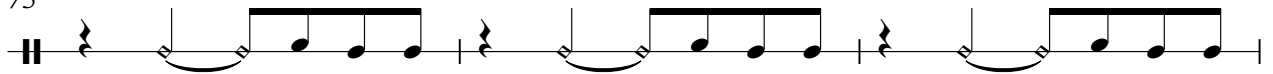
65



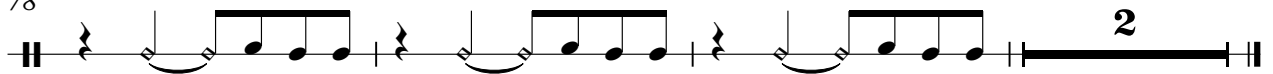
70



75



78



2

tamb.

Babyface - When Can I See You Again

♩ = 88,000023

14

18

2

23

27

31

35

39

2

44

48

51

2

tamb.

55



59



63



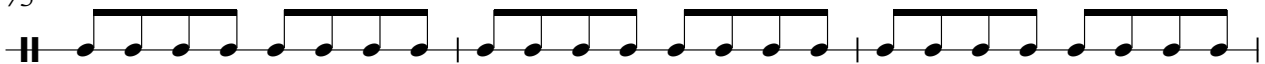
67



71



75



78



Babyface - When Can I See You Again

guitar

♩ = 88,000023

5

8

11

14

17

20

22

24

26

V.S.

29

33

36

40

43

46

48

50

53

57

Detailed description: This image shows a page of guitar sheet music, numbered 2. The music is written in a single system with ten staves, each representing a measure. The key signature has one sharp (F#), and the time signature is 4/4. The notation includes various rhythmic values such as eighth and sixteenth notes, as well as rests. Several measures contain triplets, indicated by a bracket with the number '3' above the notes. The music features a mix of melodic lines and chordal accompaniment. The first measure (29) starts with a triplet of eighth notes. The second measure (33) continues the melodic line. The third measure (36) features a more complex rhythmic pattern. The fourth measure (40) includes a triplet of eighth notes. The fifth measure (43) shows a sequence of eighth notes. The sixth measure (46) contains two triplets of eighth notes. The seventh measure (48) features a triplet of eighth notes. The eighth measure (50) includes a triplet of eighth notes. The ninth measure (53) starts with a triplet of eighth notes. The tenth measure (57) concludes the sequence with a melodic line.

60

63

66

68

70

74

77

79

Babyface - When Can I See You Again

melody

♩ = 88,000023

6

11

16

20

24

28

33

37

41

46

V.S.

2

melody

50



54



60



65



69



72

