

Rob Zombie - Dragula

♩ = 126,000130

Percussion

Electric Guitar

Electric Bass

Synth Bass

Lead 4 (Chiff)

Lead 6 (Voice)

♩ = 126,000130

6

Percussion

S. Bass

Lead 6

8

Percussion

E. Gtr.

E. Bass

S. Bass

Lead 6

10

Percussion

E. Gtr.

S. Bass

Lead 6

12

Percussion

E. Gtr.

E. Bass

S. Bass

Lead 6

14

Percussion

E. Gtr.

E. Bass

S. Bass

Lead 6

16

Percussion

E. Gtr.

E. Bass

S. Bass

Lead 4

Lead 6

Measures 16-18. Percussion: eighth notes. E. Gtr.: eighth notes. E. Bass: eighth notes. S. Bass: eighth notes. Lead 4: eighth notes. Lead 6: eighth notes.

19

Percussion

E. Gtr.

E. Bass

S. Bass

Lead 4

Measures 19-21. Percussion: eighth notes. E. Gtr.: eighth notes. E. Bass: eighth notes. S. Bass: eighth notes. Lead 4: eighth notes.

22

Percussion

E. Gtr.

E. Bass

S. Bass

Lead 4

Measure 22: Percussion (continuous eighth-note pattern), E. Gtr. (quarter notes: G4, F4, E4, D4, C4, B3, A3, G3), E. Bass (quarter notes: G3, F3, E3, D3, C3, B2, A2, G2), S. Bass (quarter notes: G3, F3, E3, D3, C3, B2, A2, G2), Lead 4 (whole note: F4, A4, C5).

Measure 23: Percussion (continuous eighth-note pattern), E. Gtr. (quarter notes: G4, F4, E4, D4, C4, B3, A3, G3), E. Bass (quarter notes: G3, F3, E3, D3, C3, B2, A2, G2), S. Bass (quarter notes: G3, F3, E3, D3, C3, B2, A2, G2), Lead 4 (whole note: F4, A4, C5).

24

Percussion

E. Gtr.

E. Bass

S. Bass

Lead 4

Measure 24: Percussion (continuous eighth-note pattern), E. Gtr. (quarter notes: G4, F4, E4, D4, C4, B3, A3, G3), E. Bass (quarter notes: G3, F3, E3, D3, C3, B2, A2, G2), S. Bass (quarter notes: G3, F3, E3, D3, C3, B2, A2, G2), Lead 4 (whole note: F4, A4, C5).

Measure 25: Percussion (continuous eighth-note pattern), E. Gtr. (quarter notes: G4, F4, E4, D4, C4, B3, A3, G3), E. Bass (quarter notes: G3, F3, E3, D3, C3, B2, A2, G2), S. Bass (quarter notes: G3, F3, E3, D3, C3, B2, A2, G2), Lead 4 (whole note: F4, A4, C5).

26

Percussion

Lead 4

Measure 26: Percussion (continuous eighth-note pattern), Lead 4 (whole note: F4, A4, C5).

Measure 27: Percussion (continuous eighth-note pattern), Lead 4 (whole note: F4, A4, C5).

28

Percussion

E. Gtr.

S. Bass

Lead 4

30

Percussion

E. Gtr.

S. Bass

Lead 4

32

Percussion

E. Gtr.

S. Bass

Lead 4

Measure 32: Percussion has snare on 2 and 4. E. Gtr. has chords: D4-F#4-A4, D4-F#4-A4, D4-F#4-A4, D4-F#4-A4. S. Bass has: D3, F#3, A3, D4, F#4, A4, D4, F#4, A4, D4, F#4, A4. Lead 4 has: D4, F#4, A4, D4, F#4, A4, D4, F#4, A4, D4, F#4, A4.

Measure 33: Percussion has snare on 2 and 4. E. Gtr. has chords: D4-F#4-A4, D4-F#4-A4, D4-F#4-A4, D4-F#4-A4. S. Bass has: D3, F#3, A3, D4, F#4, A4, D4, F#4, A4, D4, F#4, A4. Lead 4 has: D4, F#4, A4, D4, F#4, A4, D4, F#4, A4, D4, F#4, A4.

34

Percussion

E. Gtr.

S. Bass

Lead 4

Measure 34: Percussion has snare on 2 and 4. E. Gtr. has chords: D4-F#4-A4, D4-F#4-A4, D4-F#4-A4, D4-F#4-A4. S. Bass has: D3, F#3, A3, D4, F#4, A4, D4, F#4, A4, D4, F#4, A4. Lead 4 has: D4, F#4, A4, D4, F#4, A4, D4, F#4, A4, D4, F#4, A4.

Measure 35: Percussion has snare on 2 and 4. E. Gtr. has chords: D4-F#4-A4, D4-F#4-A4, D4-F#4-A4, D4-F#4-A4. S. Bass has: D3, F#3, A3, D4, F#4, A4, D4, F#4, A4, D4, F#4, A4. Lead 4 has: D4, F#4, A4, D4, F#4, A4, D4, F#4, A4, D4, F#4, A4.

36

Percussion

E. Gtr.

E. Bass

S. Bass

Lead 4

Measures 36-37. Percussion: continuous eighth-note pattern. E. Gtr.: complex chords and triplets. E. Bass: eighth-note accompaniment. S. Bass: sustained notes with a slur. Lead 4: sustained notes with a slur.

38

Percussion

E. Gtr.

E. Bass

S. Bass

Lead 4

Measures 38-39. Percussion: continuous eighth-note pattern. E. Gtr.: complex chords and triplets. E. Bass: eighth-note accompaniment. S. Bass: sustained notes with a slur. Lead 4: sustained notes with a slur.

40

40

Percussion

E. Gtr.

E. Bass

S. Bass

Lead 4

41

42

42

Percussion

E. Gtr.

E. Bass

S. Bass

Lead 4

43

44

Music score for measures 44-45, featuring five staves:

- Percussion:** A drum staff with a double bar line at the beginning, followed by a series of eighth notes marked with 'x'.
- E. Gtr. (Electric Guitar):** A staff with a treble clef, showing a complex, fast-paced melodic line with many beamed notes and a long sustain line.
- E. Bass (Electric Bass):** A staff with a bass clef, showing a series of eighth notes.
- S. Bass (Soprano Bass):** A staff with a bass clef, showing a series of eighth notes.
- Lead 4:** A staff with a treble clef, showing a series of eighth notes.

46

Music score for measures 46-47, featuring five staves:

- Percussion:** A drum staff with a double bar line at the beginning, followed by a series of eighth notes marked with 'x'.
- E. Gtr. (Electric Guitar):** A staff with a treble clef, showing a complex, fast-paced melodic line with many beamed notes and a long sustain line.
- E. Bass (Electric Bass):** A staff with a bass clef, showing a series of eighth notes.
- S. Bass (Soprano Bass):** A staff with a bass clef, showing a series of eighth notes.
- Lead 4:** A staff with a treble clef, showing a series of eighth notes.

48

48

Percussion

E. Gtr.

E. Bass

S. Bass

Lead 4

Measures 48-49. Percussion: Snare drum pattern. E. Gtr.: Electric guitar with a complex melodic line and a long sustain. E. Bass: Electric bass, mostly silent. S. Bass: Sub-bass with a rhythmic pattern. Lead 4: Lead guitar with a melodic line.

50

50

Percussion

E. Gtr.

E. Bass

S. Bass

Lead 4

Measures 50-51. Percussion: Snare drum pattern. E. Gtr.: Electric guitar with a complex melodic line and a long sustain. E. Bass: Electric bass, mostly silent. S. Bass: Sub-bass with a rhythmic pattern. Lead 4: Lead guitar with a melodic line.

52

Percussion

E. Gtr.

E. Bass

S. Bass

Lead 4

3

54

Percussion

E. Gtr.

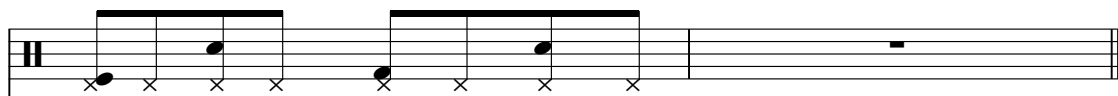
E. Bass

S. Bass

Lead 4

56

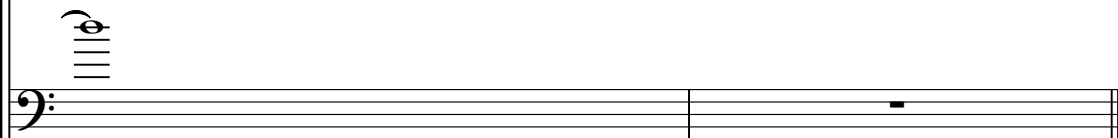
Percussion



E. Gtr.



E. Bass



S. Bass



Lead 4



Rob Zombie - Dragula

Percussion

♩ = 126,000130

4

8

12

16

20

23

25

27

30

34

V.S.

38



42



46



50



54



♩ = 126,000130

8

12

16

23

30

33

36

39

42

45

V.S.

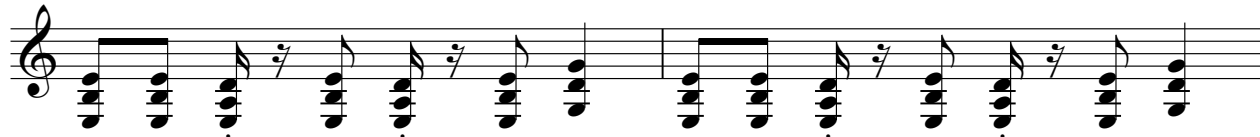
48



51



54



56



Electric Bass

Rob Zombie - Dragula

♩ = 126,000130

7 4

14 4

21

25 12

39

45

52

Synth Bass

Rob Zombie - Dragula

♩ = 126,000130

4

7

10

13

16

22

24

4

29



33



37



46



51



54



Rob Zombie - Dragula

Lead 4 (Chiff)

♩ = 126,000130

16

20

26

30

34

40

45

49

53

Lead 6 (Voice)

Rob Zombie - Dragula

