

Sound Garden - Hunted Down

♩ = 161,000351

vocals

guitar 1

guitar 3

guitar 2

T
A
B

This system contains the first three measures of the song. It features four staves: vocals (bass clef), guitar 1 (treble clef), guitar 3 (treble clef), and guitar 2 (TAB). The tempo is marked as ♩ = 161,000351. The time signature is 4/4. The guitar 1 staff has a melodic line with sharps and naturals. The guitar 2 staff is a TAB with fret numbers 0, 2, 4, 5, 7, 9, 10, 12, 14, 15, 17, 19, 20, 22, 24, 25, 27, 29, 30, 32, 34, 35, 37, 39, 40, 42, 44, 45, 47, 49, 50, 52, 54, 55, 57, 59, 60, 62, 64, 65, 67, 69, 70, 72, 74, 75, 77, 79, 80, 82, 84, 85, 87, 89, 90, 92, 94, 95, 97, 99, 100.

guitar 1

4

This system shows the continuation of the guitar 1 part from measure 4 to measure 6. The notation is identical to the first system.

guitar 1

guitar 3

guitar 2

T
A
B

bass

7

This system covers measures 7 to 9. It includes staves for guitar 1, guitar 3, guitar 2 (TAB), and bass. The guitar 1 and guitar 3 parts continue their melodic lines. The guitar 2 staff has question marks under measures 8 and 9. The bass staff has a line of notes starting in measure 8.

2

10

guitar 1

guitar 3

guitar 2
T
A
B

bass

13

guitar 1

guitar 3

guitar 2
T
A
B

bass

16

guitar 1

guitar 3

guitar 2
T
A
B

bass

19

guitar 1

guitar 3

guitar 2

T
A
B

0 0 0 0 0 0 0 0 0 1 1 1 1 1 1 1 ? ? ? ? ? ? ?

bass

22

guitar 1

guitar 3

guitar 2

T
A
B

? ? ? ? ? ? ? ? ? ? ? ? ? ? ? ? ? ? ?

bass

25

guitar 1

guitar 3

guitar 2

T
A
B

? ? ? ? ? ? ? ? ? ? ? ? ?

bass

27

vocals

guitar 1

guitar 3

guitar 2

T
A
B

bass

Detailed description: This system covers measures 27 and 28. The vocal line (bass clef) has a whole rest in measure 27 and a half note B-flat in measure 28. Guitar 1 (treble clef) plays a melodic line with eighth notes and slurs. Guitar 3 (treble clef) plays a similar melodic line with slurs. Guitar 2 (TAB) shows fret numbers for measures 27 and 28. The bass line (bass clef) plays a rhythmic pattern of eighth notes with various accidentals.

29

vocals

guitar 1

guitar 3

guitar 2

T
A
B

bass

Detailed description: This system covers measures 29 and 30. The vocal line (bass clef) has a melodic line with eighth notes and slurs. Guitar 1 (treble clef) plays a melodic line with slurs. Guitar 3 (treble clef) plays a melodic line with slurs. Guitar 2 (TAB) shows fret numbers for measures 29 and 30. The bass line (bass clef) plays a rhythmic pattern of eighth notes with various accidentals.

32

vocals

guitar 1

guitar 3

guitar 2

T
A
B

bass

5

35

vocals

guitar 1

guitar 3

guitar 2

T
A
B

bass

6

38

vocals

guitar 1

guitar 3

guitar 2

T
A
B

bass

41

vocals

guitar 1

guitar 3

guitar 2

T
A
B

bass

44 7

vocals

guitar 1

guitar 3

guitar 2
T
A
B
? ? ? ? ? ? ? ? ? ? ? ?

bass

46

vocals

guitar 1

guitar 3

guitar 2
T
A
B
? ? ? ? ? ? ? ? ? ? ? ?

bass

48

vocals

guitar 1

guitar 3

guitar 2

T
A
B

0 0 0 0 0 0 0 0

bass

50

vocals

guitar 1

guitar 3

guitar 2

T
A
B

0 0 0 0 0 0 0 0

bass

52

vocals

guitar 1

guitar 3

guitar 2
TAB
0 0 0 0 0 ? ? ? ? ? ? ? ? ? ? ? ?

bass

55

vocals

guitar 1

guitar 3

guitar 2
TAB
? ? ? ? ? ? ? ? ? ? ? ? ? ? ? ?

bass

58

vocals

guitar 1

guitar 3

guitar 2
TAB
A
B

bass

61

vocals

guitar 1

guitar 3

guitar 2
TAB
A
B

bass

64

vocals

guitar 1

guitar 3

guitar 2
TAB

bass

67

vocals

guitar 1

guitar 3

guitar 2
TAB

bass

70

vocals

guitar 1

guitar 3

guitar 2

T
A
B

bass

73

vocals

guitar 1

guitar 3

guitar 2

T
A
B

bass

76

vocals

guitar 1

guitar 3

guitar 2

T
A
B

bass

78

vocals

guitar 1

guitar 3

guitar 2

T
A
B

bass

85

vocals

guitar 1

guitar 3

guitar 2

T
A
B

bass

88

vocals

guitar 1

guitar 3

guitar 2

T
A
B

bass

91

vocals

guitar 1

guitar 3

guitar 2

T
A
B

bass

94

vocals

guitar 1

guitar 3

guitar 2

T
A
B

bass

96

vocals

A musical staff in bass clef containing several measures of music. It features a few notes with stems, some with slurs, and several measures with whole rests.

guitar 1

A musical staff in treble clef showing a sequence of chords. Each chord is represented by a vertical line with a dot indicating the pitch, and they are connected by a horizontal line.

guitar 3

A musical staff in treble clef showing arpeggiated chords. Each chord is represented by a vertical line with a dot, and the notes are connected by a horizontal line with a slur above it.

guitar 2

A guitar tablature staff with six lines. The letters 'T', 'A', and 'B' are written vertically on the first three lines. Below the staff, a series of question marks are placed under each measure.

bass

A musical staff in bass clef showing a sequence of notes with stems, connected by a horizontal line.

Sound Garden - Hunted Down

vocals

♩ = 161,000351

27

31

37

41

46

51

54

58

Measure 58: Bass clef, starting with a whole rest. The melody begins with a half note G4 (flat), followed by a quarter note A4 (flat), a quarter note B4 (flat), and a quarter note C5 (flat). This is followed by a quarter rest, a quarter note D5 (flat), a quarter note E5 (flat), and a quarter note F5 (flat). The measure ends with a quarter rest.

62

Measure 62: Bass clef, starting with a whole rest. The melody begins with a half note G4 (flat), followed by a quarter note A4 (flat), a quarter note B4 (flat), and a quarter note C5 (flat). This is followed by a quarter rest, a quarter note D5 (flat), a quarter note E5 (flat), and a quarter note F5 (flat). The measure ends with a quarter rest.

67

Measure 67: Bass clef, starting with a whole rest. The melody begins with a half note G4 (flat), followed by a quarter note A4 (flat), a quarter note B4 (flat), and a quarter note C5 (flat). This is followed by a quarter rest, a quarter note D5 (flat), a quarter note E5 (flat), and a quarter note F5 (flat). The measure ends with a quarter rest.

71

Measure 71: Bass clef, starting with a whole rest. The melody begins with a half note G4 (flat), followed by a quarter note A4 (flat), a quarter note B4 (flat), and a quarter note C5 (flat). This is followed by a quarter rest, a quarter note D5 (flat), a quarter note E5 (flat), and a quarter note F5 (flat). The measure ends with a quarter rest.

76

Measure 76: Bass clef, starting with a whole rest. The melody begins with a half note G4 (flat), followed by a quarter note A4 (flat), a quarter note B4 (flat), and a quarter note C5 (flat). This is followed by a quarter rest, a quarter note D5 (flat), a quarter note E5 (flat), and a quarter note F5 (flat). The measure ends with a quarter rest.

81

Measure 81: Bass clef, starting with a whole rest. The melody begins with a half note G4 (flat), followed by a quarter note A4 (flat), a quarter note B4 (flat), and a quarter note C5 (flat). This is followed by a quarter rest, a quarter note D5 (flat), a quarter note E5 (flat), and a quarter note F5 (flat). The measure ends with a quarter rest.

87

Measure 87: Bass clef, starting with a whole rest. The melody begins with a half note G4 (flat), followed by a quarter note A4 (flat), a quarter note B4 (flat), and a quarter note C5 (flat). This is followed by a quarter rest, a quarter note D5 (flat), a quarter note E5 (flat), and a quarter note F5 (flat). The measure ends with a quarter rest.

93

Measure 93: Bass clef, starting with a whole rest. The melody begins with a half note G4 (flat), followed by a quarter note A4 (flat), a quarter note B4 (flat), and a quarter note C5 (flat). This is followed by a quarter rest, a quarter note D5 (flat), a quarter note E5 (flat), and a quarter note F5 (flat). The measure ends with a quarter rest.

96

Measure 96: Bass clef, starting with a whole rest. The melody begins with a half note G4 (flat), followed by a quarter note A4 (flat), a quarter note B4 (flat), and a quarter note C5 (flat). This is followed by a quarter rest, a quarter note D5 (flat), a quarter note E5 (flat), and a quarter note F5 (flat). The measure ends with a quarter rest.

Sound Garden - Hunted Down

guitar 1

♩ = 161,000351

5

9

13

17

21

25

29

33

37

V.S.

41

45

49

53

57

61

65

69

73

77

81



85



89



93



96



Sound Garden - Hunted Down

guitar 3

♩ = 161,000351

8

12

16

20

23

26

29

32

35

38

V.S.

This musical score for guitar 3 consists of ten systems of music, each starting with a measure number: 41, 44, 47, 49, 51, 53, 56, 59, 62, and 65. Each system is written on a grand staff with a treble clef on the upper staff and a bass clef on the lower staff. The notation includes various rhythmic values such as eighth and sixteenth notes, often beamed together, and rests. Many notes are tied across bar lines. The piece features a complex, multi-layered texture with frequent use of triplets and sixteenth-note patterns. The key signature is one sharp (F#), and the time signature is 4/4. The score concludes with a final measure in system 65.

This musical score for guitar 3 consists of ten systems of music, each starting with a measure number. The notation is written on a grand staff (treble and bass clefs) with a key signature of one sharp (F#).
- Measures 68-70: Treble clef with a melodic line of eighth notes and a bass clef with a supporting line of eighth notes.
- Measures 71-73: Similar to the previous system, with a melodic line in the treble and a supporting line in the bass.
- Measures 74-76: Treble clef with a melodic line of eighth notes and a bass clef with a supporting line of eighth notes.
- Measures 77-79: Treble clef with a melodic line of eighth notes and a bass clef with a supporting line of eighth notes.
- Measures 80-82: Treble clef with a melodic line of eighth notes and a bass clef with a supporting line of eighth notes.
- Measures 83-85: Treble clef with a melodic line of eighth notes and a bass clef with a supporting line of eighth notes.
- Measures 86-88: Treble clef with a melodic line of eighth notes and a bass clef with a supporting line of eighth notes.
- Measures 89-91: Treble clef with a melodic line of eighth notes and a bass clef with a supporting line of eighth notes.
- Measures 92-93: Treble clef with a melodic line of eighth notes and a bass clef with a supporting line of eighth notes.

V.S.

Sound Garden - Hunted Down

guitar 2

♩ = 161,000351
8

12
16
20
24
28
32
36
40
44

V.S.

T				
A				
B				
	? ? ? ? ? ? ? ?	0 0 0 0 0 0 0 0	0 0 0 0 0 0 0 0	0 0 0 0 0 0 0 0

52

T				
A				
B				
	0 0 0 0 0 ? ? ?	? ? ? ? ? ? ? ?	? ? ? ? ? ? ? ?	? ? ? ? ? ? ? ?

56

T				
A				
B				
	? ? ? ? ? ? ? ?	? ? ? ? ? ? ? ?	? ? ? ? ? ? ? ?	? ? ? ? ? ? ? ?

60

T				
A				
B				
	? ? ? ? ? ? ? ?	? ? ? ? ? ? ? ?	? ? ? ? ? ? ? ?	? ? ? ? ? ? ? ?

64

T				
A				
B				
	? ? ? ? ? ? ? ?	? ? ? ? ? ? ? ?	? ? ? ? ? ? ? ?	? ? ? ? ? ? ? ?

68

T				
A				
B				
	? ? ? ? ? ? ? ?	? ? ? ? ? ? ? ?	? ? ? ? ? ? ? ?	? ? ? ? ? ? ? ?

72

T				
A				
B				
	? ? ? ? ? ? ? ?	? ? ? ? ? ? ? ?	? ? ? ? ? ? ? ?	? ? ? ? ? ? ? ?

76

T				
A				
B				
	? ? ? ? ? ? ? ?	? ? ? ? ? ? ? ?	? ? ? ? ? ? ? ?	0 0 0 0 0 0 0 0

80

T				
A				
B				
	0 0 0 0 0 0 0 0	0 0 0 0 0 0 0 0	0 0 0 0 0 ? ? ?	? ? ? ? ? ? ? ?

84

T				
A				
B				
	? ? ? ? ? ? ? ?	? ? ? ? ? ? ? ?	? ? ? ? ? ? ? ?	? ? ? ? ? ? ? ?

Sound Garden - Hunted Down

bass

♩ = 161,000351
8



12



16



20



24



28



32



36



40

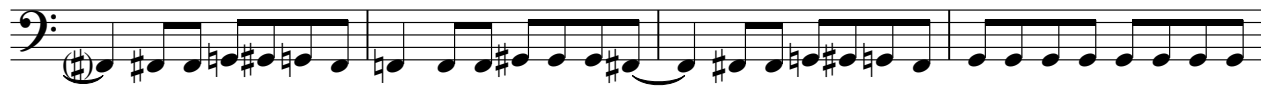


44



V.S.

88



92



95

