

17

Bsn.

Perc.

Richard Simon

E. Bass

Sequenced By

19

Bsn.

Perc.

Richard Simon

E. Bass

Sequenced By

33

Bsn.

Sequenced By

Detailed description: This system shows the beginning of measure 33. The Bsn. part is in bass clef with a treble clef sign above the staff. It features a series of eighth notes and rests. The Sequenced By part is in treble clef and consists of a sequence of chords and notes.

35

Bsn.

Sequenced By

Detailed description: This system shows the beginning of measure 35. The Bsn. part is in bass clef with a treble clef sign above the staff. It features a series of eighth notes and rests. The Sequenced By part is in treble clef and consists of a sequence of chords and notes.

37

Bsn.

Perc.

Richard Simon

E. Bass

Sequenced By

Detailed description: This system shows the beginning of measure 37. It includes five staves: Bsn. (bass clef, treble clef sign), Perc. (drum notation), Richard Simon (guitar tablature with fret numbers 0, 2, 3, 4, 5 and question marks), E. Bass (bass clef), and Sequenced By (treble clef). The Perc. part has a '3' above it. The Richard Simon part has a '3' above it. The E. Bass part has a '3' above it. The Sequenced By part is in treble clef and consists of a sequence of chords and notes.

51

Perc.

Richard Simon

E. Bass

53

Perc.

Richard Simon

E. Bass

55

Perc.

Richard Simon

E. Bass

57

Perc.

Richard Simon

59

Perc.

Richard Simon

T
A
B

2	2	2	2	2	2	2	2	2	2	2	2	2	2	2	2	2
2	2	2	2	2	2	2	2	2	2	2	2	2	2	2	2	2
2	2	2	2	2	2	2	2	2	2	2	2	2	2	2	2	2

61

Perc.

Richard Simon

T
A
B

2	2	2	2	2	2	2	2	2	2	2	2	2	2	2	2	2
2	2	2	2	2	2	2	2	2	2	2	2	2	2	2	2	2
2	2	2	2	2	2	2	2	2	2	2	2	2	2	2	2	2

63

Perc.

Richard Simon

T
A
B

2	2	2	2	2	2	2	2	2	2	2	2	2	2	2	2	2
2	2	2	2	2	2	2	2	2	2	2	2	2	2	2	2	2
2	2	2	2	2	2	2	2	2	2	2	2	2	2	2	2	2

65

Bsn.

Perc.

Richard Simon

T
A
B

			2	2	2	2	2	2	2	2	2	2	2	2	2	2	1	1	1
			0	0	0	0	0	0	0	0	0	0	0	0	0	0	0	0	0

E. Bass

67

Bsn.

Perc.

Richard Simon

T																			
A	1	1	1	1	1	1	1	1	1	1	1	1	1	1	1	1	1	1	1
B	2	2	2	2	2	2	2	2	2	2	2	2	2	2	2	2	2	2	2
	0	0	0	0	0	0	0	0	0	0	0	0	0	0	0	0	0	0	0

E. Bass

68

Bsn.

Perc.

Richard Simon

T																			
A	4	4	4	4	4	4	4	4	4	4	4	4	4	4	4	4	4	4	4
B	4	4	4	4	4	4	4	4	4	4	4	4	4	4	4	4	4	4	4
	4	4	4	4	4	4	4	4	4	4	4	4	4	4	4	4	4	4	4

E. Bass

69

Bsn.

Perc.

Richard Simon

T																			
A	1	1	1	1	1	1	1	1	1	1	1	1	1	1	2	2	2	2	2
B	2	2	2	2	2	2	2	2	2	2	2	2	2	2	0	0	0	0	0
	0	0	0	0	0	0	0	0	0	0	0	0	0	0	0	0	0	0	0

E. Bass

70

Bsn.

Perc.

Richard Simon

T																	
A	2	2	2	2	2	2	2	2	2	2	2	2	2	1	1	1	
B	0	0	0	0	0	0	0	0	0	0	0	0	0	0	0	0	

E. Bass

71

Bsn.

Perc.

Richard Simon

T																	
A	1	1	1	1	1	1	1	1	1	1	1	1	1	4	4	4	
B	2	2	2	2	2	2	2	2	2	2	2	2	2	4	4	4	
	0	0	0	0	0	0	0	0	0	0	0	0	0	4	4	4	

E. Bass

72

Bsn.

Perc.

Richard Simon

T																	
A	4	4	4	4	4	4	4	4	4	4	4	4	4	1	1	1	
B	4	4	4	4	4	4	4	4	4	4	4	4	4	2	2	2	
	4	4	4	4	4	4	4	4	4	4	4	4	4	0	0	0	

E. Bass

73

Bsn.

Perc.

Richard Simon

T															
A	1	1	1	1	1	1	1	1	1	1	1	1	2	2	2
B	0	0	0	0	0	0	0	0	0	0	0	0	0	0	0

E. Bass

74

Bsn.

Perc.

Richard Simon

T																
A	2	2	2	2	2	2	2	2	2	2	2	2	2	1	1	1
B	0	0	0	0	0	0	0	0	0	0	0	0	0	0	0	0

E. Bass

75

Bsn.

Perc.

Richard Simon

T																
A	1	1	1	1	1	1	1	1	1	1	1	1	4	4	4	4
B	0	0	0	0	0	0	0	0	0	0	0	0	4	4	4	4

E. Bass

79

Bsn.

Perc.

Richard Simon

T																			
A	1	1	1	1	1	1	1	1	1	1	1	1	1	1	1	1	1	1	1
B	2	2	2	2	2	2	2	2	2	2	2	2	2	2	2	2	2	2	2
	0	0	0	0	0	0	0	0	0	0	0	0	0	0	0	0	0	0	0

E. Bass

80

Bsn.

Perc.

Richard Simon

T																			
A	4	4	4	4	4	4	4	4	4	4	4	4	4	4	4	4	4	4	4
B	4	4	4	4	4	4	4	4	4	4	4	4	4	4	4	4	4	4	4
	4	4	4	4	4	4	4	4	4	4	4	4	4	4	4	4	4	4	4

E. Bass

81

Bsn.

Perc.

Richard Simon

T																			
A	1	1	1	1	1	1	1	1	1	1	1	1	1	1	1	1	1	1	1
B	2	2	2	2	2	2	2	2	2	2	2	2	2	2	2	2	2	2	2
	0	0	0	0	0	0	0	0	0	0	0	0	0	0	0	0	0	0	0

E. Bass

82

Bsn.

Richard Simon

T				
A	2	2	2	2
B	0	0	0	0

E. Bass

Bassoon

Boxcar Racer - I feel So

♩ = 100,000000 ♩ = 120,000000

4 7

14

17

20

23

26

28

2

Copyright © 2002 by Braden Beattie

Bassoon

32

36

40

43

46

49

15

67

70

73

76

Boxcar Racer - I feel So

Percussion

♩ = 100,000000

♩ = 120,000000

The score is written on a single staff with a 4/4 time signature. It begins with a 4-measure rest, followed by a series of rhythmic patterns. The notation includes eighth notes, quarter notes, and quarter rests, often grouped with beams. Above the staff, there are several horizontal lines with 'x' marks, representing cymbal or snare hits. Measure numbers 7, 10, 12, 18, 20, 22, 24, 26, and 28 are indicated on the left. A '4' is placed above the staff at measure 12, and a '3' is placed below the staff at measure 15. The score ends at measure 28.

Copyright © 2002 by Braden Beattie

V.S.

Percussion

30

32

38

40

42

44

46

48

51

54

57

Musical notation for measure 57, featuring a series of eighth notes followed by a sixteenth-note triplet and a sixteenth-note triplet.

59

Musical notation for measure 59, featuring a series of eighth notes followed by a sixteenth-note triplet and a sixteenth-note triplet.

61

Musical notation for measure 61, featuring a series of eighth notes followed by a sixteenth-note triplet and a sixteenth-note triplet.

63

Musical notation for measure 63, featuring a series of eighth notes followed by a sixteenth-note triplet and a sixteenth-note triplet.

66

Musical notation for measure 66, featuring a complex rhythmic pattern with eighth notes and sixteenth notes, including a sixteenth-note triplet.

68

Musical notation for measure 68, featuring a complex rhythmic pattern with eighth notes and sixteenth notes, including a sixteenth-note triplet.

70

Musical notation for measure 70, featuring a complex rhythmic pattern with eighth notes and sixteenth notes, including a sixteenth-note triplet.

72

Musical notation for measure 72, featuring a complex rhythmic pattern with eighth notes and sixteenth notes, including a sixteenth-note triplet.

74

Musical notation for measure 74, featuring a complex rhythmic pattern with eighth notes and sixteenth notes, including a sixteenth-note triplet.

76

Musical notation for measure 76, featuring a complex rhythmic pattern with eighth notes and sixteenth notes, including a sixteenth-note triplet.

V.S.

4

Percussion

78

Musical notation for Percussion, measures 78-79. The top staff features a complex rhythmic pattern with eighth and sixteenth notes, many marked with 'x' for percussion. The bottom staff shows a bass line with eighth and sixteenth notes.

80

Musical notation for Percussion, measures 80-81. The top staff features a complex rhythmic pattern with eighth and sixteenth notes, many marked with 'x' for percussion. The bottom staff shows a bass line with eighth and sixteenth notes. A large '4' is written at the end of the staff.

Electric Bass

Boxcar Racer - I feel So

♩ = 100,000000 ♩ = 120,000000

4

7

10

13

4

20

24

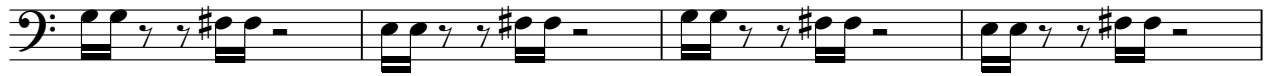
28

31

4

Copyright © 2002 by Braden Beattie

37



41



45



49



52



55



65



68



70



72



74



76



78



80



82



Sequenced By

Boxcar Racer - I feel So

♩ = 100,000000 ♩ = 120,000000

7

13

17

21

11

35

39

45

Copyright © 2002 by Braden Beattie