

AC/DC - Have A Drink On Me

0.0"
1.1,00
untitled

2.0"
2.1,00
Gt 1

♩ = 116,999886

Drums

6

Drums

Bass

10

Drums

Bass

24.8"
13.1,00
Intro

13

♩ = 122,000069

Drums

Bass

17

Drums

Bass

40.0
21.1,00
Verse 1

20

Drums

Bass

23

Drums

Bass

58.3"
29.1,00
Bridge 1

27

Drums

Bass

31

Drums

Bass

1'12.0"
37.1,00
Chorus 1

35

Drums

Bass

38

Drums

Bass

42

Drums

Bass

1'27.7"
45.1,00
Break 1

3

45

Drums

Bass

1'35.6"
49.1,00
Verse 2

49

Drums

Bass

53

Drums

Bass

1'51.3"
57.1,00
Bridge 2

57

Drums

Bass

61

Drums

Bass

2'07.1"
65.1,00
Chorus 2

64

Drums

Bass

67

Drums

Bass

2'22.8"
73.1,00
Solo

Detailed description: This system covers measures 67 to 70. The drum part features a consistent pattern of eighth notes with asterisks indicating specific accents. The bass part consists of a steady eighth-note line. A text box on the right side of the system contains the text '2'22.8"', '73.1,00', and 'Solo'.

71

Drums

Bass

Detailed description: This system covers measures 71 to 73. The drum part continues with eighth notes and asterisks, showing some variation in the pattern. The bass part continues with eighth notes, including a half-note rest in measure 72.

74

Drums

Bass

Detailed description: This system covers measures 74 to 77. The drum part features eighth notes with asterisks and some double bar lines. The bass part continues with eighth notes, including a sharp sign in the first two measures.

78

Drums

Bass

Detailed description: This system covers measures 78 to 80. The drum part features eighth notes with asterisks and double bar lines. The bass part continues with eighth notes, including a sharp sign in the first two measures.

81

Drums

Bass

Detailed description: This system covers measures 81 to 83. The drum part features eighth notes with asterisks and double bar lines. The bass part continues with eighth notes, including a sharp sign in the first two measures.

84

Drums

Bass

Detailed description: This system covers measures 84 to 87. The drum part features eighth notes with asterisks and double bar lines. The bass part continues with eighth notes, including a sharp sign in the first measure.

2'52.3"
88.1,00
Break 2

87

Drums

Bass

90

Drums

Bass

93

Drums

Bass

3'12.0"
98.1,00
Outro

96

Drums

Bass

100

Drums

Bass

104

Drums

Bass

6

108

Drums

Bass

112

Drums

Bass

116

Drums

Bass

122

Drums

Bass

130

Drums

139

Drums

148

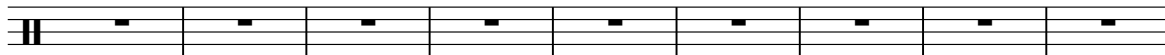
Drums

157

Drums

166

Drums



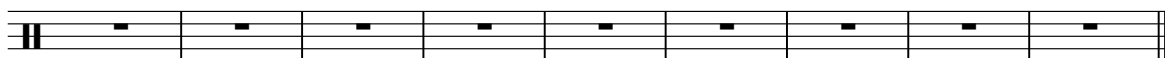
A single measure of drum notation on a five-line staff. It begins with a double bar line. The first eighth note is on the top line (snare). The second eighth note is on the second line (bass drum). This pattern repeats for the next seven eighth notes. The measure ends with a double bar line.

175

♩ = 120,000,000

♩ = 75,999,969

Drums



A single measure of drum notation on a five-line staff. It begins with a double bar line. The first eighth note is on the top line (snare). The second eighth note is on the second line (bass drum). This pattern repeats for the next seven eighth notes. The measure ends with a double bar line.

AC/DC - Have A Drink On Me

Drums

♩ = 116,999886

7

12

♩ = 122,000069

16

20

24

28

32

36

40

V.S.

Drums

44

48

52

56

60

64

68

72

76

80

84

Measure 84: Drum notation on a five-line staff. The top line contains a series of eighth notes with stems pointing down, marked with asterisks. The bottom line contains a series of eighth notes with stems pointing up, marked with asterisks. The notation is organized into four groups of two measures each.

88

Measure 88: Drum notation on a five-line staff. The top line contains a series of eighth notes with stems pointing down, marked with asterisks. The bottom line contains a series of eighth notes with stems pointing up, marked with asterisks. The notation is organized into four groups of two measures each.

91

Measure 91: Drum notation on a five-line staff. The top line contains a series of eighth notes with stems pointing down, marked with asterisks. The bottom line contains a series of eighth notes with stems pointing up, marked with asterisks. The notation is organized into four groups of two measures each.

94

Measure 94: Drum notation on a five-line staff. The top line contains a series of eighth notes with stems pointing down, marked with asterisks. The bottom line contains a series of eighth notes with stems pointing up, marked with asterisks. The notation is organized into four groups of two measures each.

98

Measure 98: Drum notation on a five-line staff. The top line contains a series of eighth notes with stems pointing down, marked with asterisks. The bottom line contains a series of eighth notes with stems pointing up, marked with asterisks. The notation is organized into four groups of two measures each.

102

Measure 102: Drum notation on a five-line staff. The top line contains a series of eighth notes with stems pointing down, marked with asterisks. The bottom line contains a series of eighth notes with stems pointing up, marked with asterisks. The notation is organized into four groups of two measures each.

106

Measure 106: Drum notation on a five-line staff. The top line contains a series of eighth notes with stems pointing down, marked with asterisks. The bottom line contains a series of eighth notes with stems pointing up, marked with asterisks. The notation is organized into four groups of two measures each.

110

Measure 110: Drum notation on a five-line staff. The top line contains a series of eighth notes with stems pointing down, marked with asterisks. The bottom line contains a series of eighth notes with stems pointing up, marked with asterisks. The notation is organized into four groups of two measures each.

114

Measure 114: Drum notation on a five-line staff. The top line contains a series of eighth notes with stems pointing down, marked with asterisks. The bottom line contains a series of eighth notes with stems pointing up, marked with asterisks. The notation is organized into four groups of two measures each.

118

Measure 118: Drum notation on a five-line staff. The top line contains a series of eighth notes with stems pointing down, marked with asterisks. The bottom line contains a series of eighth notes with stems pointing up, marked with asterisks. The notation is organized into four groups of two measures each.

4

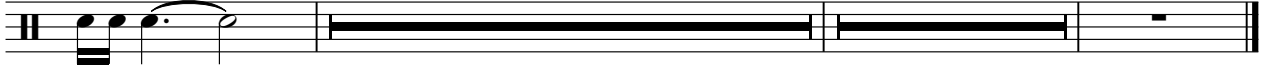
Drums

123

♩ = 120,000000 ♩ = 1017500000

56

3



AC/DC - Have A Drink On Me

Bass

♩ = 116,999886



11

♩ = 122,000069



15



19



23



27



31



35



39



43



V.S.

47



51



55



59



63



67



71



75



79



83



87



94



99



104



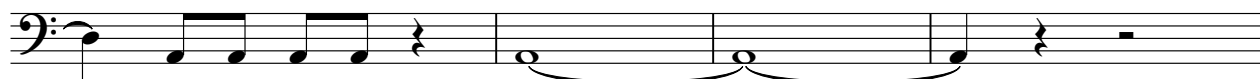
108



112



120



124

56

♩ = 120,000000 ♩ = 101,000069 ♩ = 75,999969

3

