

# Blossom - Blossom

$\text{♩} = 120,000000$

Pedal Steel Guitar

Sarangi

Sarangi

4

P. S. Gtr.

Sar.

Sar.

7

P. S. Gtr.

Sar.

Sar.

10

P. S. Gtr.

Sar.

Sar.

13

P. S. Gtr.

Sar.

Sar.

16

P. S. Gtr.

Sar.

Sar.

20

P. S. Gtr.

Sar.

Sar.

24

P. S. Gtr.

Sar.

Sar.

28

P. S. Gtr.

Sar.

Sar.

32

P. S. Gtr.

Sar.

Sar.

35

P. S. Gtr.

Sar.

Sar.

38

P. S. Gtr.

Sar.

Sar.

41

P. S. Gtr.

Sar.

Sar.

44

P. S. Gtr.

Sar.

Sar.

47

P. S. Gtr.

Sar.

Sar.

51

P. S. Gtr.

Sar.

Sar.

55

P. S. Gtr.

Sar.

Sar.

Detailed description: This system contains measures 55 through 58. The P. S. Gtr. part features a series of chords: G major (measures 55-56), F#m (57), and G major (58). The first Sar. part has a melodic line starting on G4, moving to A4, B4, and C5 in measures 55-56, then descending to B4, A4, G4, and F#4 in measures 57-58. The second Sar. part has a bass line starting on G2, moving to A2, B2, and C3 in measures 55-56, then descending to B2, A2, G2, and F#2 in measures 57-58.

59

P. S. Gtr.

Sar.

Sar.

Detailed description: This system contains measures 59 through 62. The P. S. Gtr. part features a series of chords: G major (measures 59-60), F#m (61), and G major (62). The first Sar. part has a melodic line starting on G4, moving to A4, B4, and C5 in measures 59-60, then descending to B4, A4, G4, and F#4 in measures 61-62. The second Sar. part has a bass line starting on G2, moving to A2, B2, and C3 in measures 59-60, then descending to B2, A2, G2, and F#2 in measures 61-62.

63

P. S. Gtr.

Sar.

Sar.

Detailed description: This system contains measures 63 through 66. The P. S. Gtr. part features a series of chords: G major (measures 63-64), F#m (65), and G major (66). The first Sar. part has a melodic line starting on G4, moving to A4, B4, and C5 in measures 63-64, then descending to B4, A4, G4, and F#4 in measures 65-66. The second Sar. part has a bass line starting on G2, moving to A2, B2, and C3 in measures 63-64, then descending to B2, A2, G2, and F#2 in measures 65-66.

67

P. S. Gtr.

Sar.

Sar.

Detailed description: This system contains measures 67 through 70. The P. S. Gtr. part features a series of chords: G major (measures 67-68), F#m (69), and G major (70). The first Sar. part has a melodic line starting on G4, moving to A4, B4, and C5 in measures 67-68, then descending to B4, A4, G4, and F#4 in measures 69-70. The second Sar. part has a bass line starting on G2, moving to A2, B2, and C3 in measures 67-68, then descending to B2, A2, G2, and F#2 in measures 69-70.

70

P. S. Gtr.

Sar.

Sar.



73

P. S. Gtr.

Sar.

Sar.



76

P. S. Gtr.

Sar.

Sar.



79

P. S. Gtr.

Sar.

Sar.



83

P. S. Gtr.

Sar.

Sar.

87

P. S. Gtr.

Sar.

Sar.

91

P. S. Gtr.

Sar.

Sar.

94

P. S. Gtr.

Sar.

Sar.





61



67



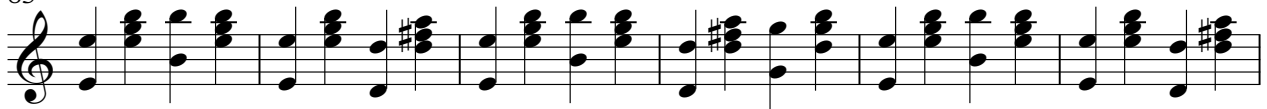
73



79



85



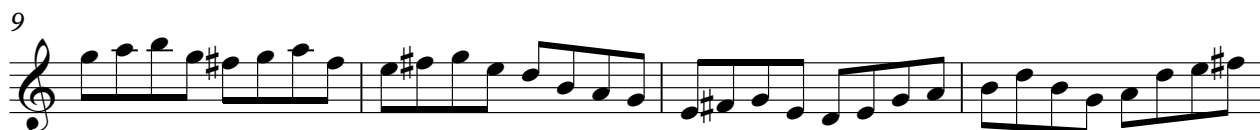
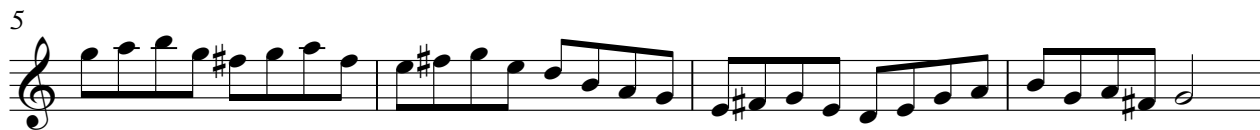
91



Blossom - Blossom

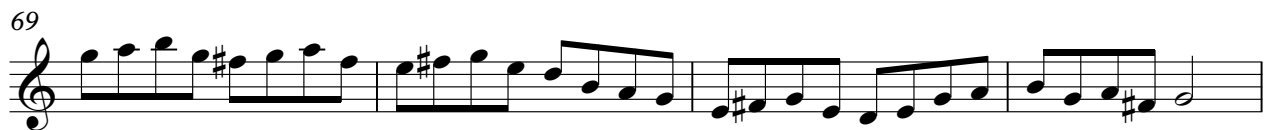
Sarangi

$\text{♩} = 120,000000$



V.S.

## Sarangi



81



85



89



93







