

Charlie's Angels - Charlie's Angels

♩ = 128,000000

French Horn

Trumpet

Trombone

Percussion

Electric Guitar (jazz)

Acoustic Bass

Synth Lead 6 (voice)

♩ = 128,000000

Tremolo Strings

4

French Horn

Trumpet

Trombone

Percussion

Electric Guitar (jazz)

Acoustic Bass

Synth Lead 6 (voice)

Tremolo Strings



6

French Horn

Trumpet

Trombone

Percussion

Electric Guitar (jazz)

Acoustic Bass

Synth Lead 6 (voice)

Tremolo Strings

8

French Horn

Trumpet

Trombone

Percussion

Electric Guitar (jazz)

Acoustic Bass

Synth Lead 6 (voice)

Tremolo Strings



10

French Horn

Trumpet

Trombone

Percussion

Electric Guitar (jazz)

Acoustic Bass

Synth Lead 6 (voice)

Tremolo Strings

12

French Horn

Trumpet

Trombone

Percussion

Electric Guitar (jazz)

Acoustic Bass

Synth Lead 6 (voice)

Tremolo Strings

Detailed description: This system contains measures 12, 13, and 14. The French Horn part has rests in measures 12 and 13, with a chord in measure 14. The Trumpet and Trombone parts play a melodic line in measure 12, followed by sustained chords in measures 13 and 14. The Percussion part has a consistent rhythmic pattern of eighth notes. The Electric Guitar (jazz) part plays a complex chordal texture with many accidentals. The Acoustic Bass part plays a simple eighth-note bass line. The Synth Lead 6 (voice) part has a few notes in measure 12 and rests in measures 13 and 14. The Tremolo Strings part has a melodic line in measure 12 and rests in measures 13 and 14.



15

French Horn

Trumpet

Trombone

Percussion

Electric Guitar (jazz)

Acoustic Bass

Synth Lead 6 (voice)

Tremolo Strings

Detailed description: This system contains measures 15, 16, and 17. The French Horn part has a chord in measure 15 and rests in measures 16 and 17. The Trumpet and Trombone parts play a long, sustained melodic line across measures 15 and 16, ending with a chord in measure 17. The Percussion part continues with its eighth-note pattern. The Electric Guitar (jazz) part plays a complex chordal texture. The Acoustic Bass part plays a simple eighth-note bass line. The Synth Lead 6 (voice) part has a few notes in measure 15 and rests in measures 16 and 17. The Tremolo Strings part has a long, sustained melodic line across measures 15 and 16, ending with a chord in measure 17.

17

French Horn

Trumpet

Trombone

Percussion

Electric Guitar (jazz)

Acoustic Bass

Synth Lead 6 (voice)

Tremolo Strings



19

French Horn

Trumpet

Trombone

Percussion

Electric Guitar (jazz)

Acoustic Bass

Synth Lead 6 (voice)

Tremolo Strings

21

French Horn

Trumpet

Trombone

Percussion

Electric Guitar (jazz)

Acoustic Bass

Synth Lead 6 (voice)

Tremolo Strings



23

French Horn

Trumpet

Trombone

Percussion

Electric Guitar (jazz)

Acoustic Bass

Synth Lead 6 (voice)

Tremolo Strings

26

French Horn

Trumpet

Trombone

Percussion

Electric Guitar (jazz)

Acoustic Bass

Tremolo Strings

Detailed description: This system contains measures 26, 27, and 28. The French Horn part has a melodic line starting on a whole note G4, moving to a half note A4, and ending with a quarter note G4. The Trumpet and Trombone parts are mostly silent, with some notes in measure 28. The Percussion part features a consistent rhythmic pattern of eighth notes with 'x' marks above them. The Electric Guitar (jazz) part plays a complex chordal texture with many beamed eighth notes. The Acoustic Bass part has a simple line of quarter notes. The Tremolo Strings part has a long, sustained note in measure 26, followed by a triplet of eighth notes in measure 28.



29

French Horn

Trumpet

Trombone

Percussion

Electric Guitar (jazz)

Acoustic Bass

Synth Lead 6 (voice)

Tremolo Strings

Detailed description: This system contains measures 29, 30, and 31. The French Horn part has a sustained chordal texture. The Trumpet and Trombone parts have melodic lines with some rests. The Percussion part continues with its eighth-note pattern. The Electric Guitar (jazz) part has a dense texture of beamed eighth notes. The Acoustic Bass part has a line of quarter notes. The Synth Lead 6 (voice) part has a sparse texture with some chords. The Tremolo Strings part has a melodic line with some sustained notes.

32

French Horn

Trumpet

Trombone

Percussion

Electric Guitar (jazz)

Acoustic Bass

Synth Lead 6 (voice)

Tremolo Strings

French Horn

Charlie's Angels - Charlie's Angels

♩ = 128,000000

2

7

12

17

22

27

31

Trumpet

Charlie's Angels - Charlie's Angels

♩ = 128,000000

2

7

13

19

25

3

31

Detailed description: This image shows a musical score for a trumpet part. The score is written on a single staff in treble clef with a key signature of two sharps (F# and C#) and a 4/4 time signature. The tempo is marked as ♩ = 128,000000. The score is divided into six systems, each starting with a measure number: 2, 7, 13, 19, 25, and 31. The first system begins with a double bar line and a '2' above it, indicating a second ending. The music consists of various note values including quarter, eighth, and sixteenth notes, as well as rests and slurs. The final system ends with a double bar line.

Trombone

Charlie's Angels - Charlie's Angels

♩ = 128,000000
2

Charlie's Angels - Charlie's Angels

Electric Guitar (jazz)

♩ = 128,000000

2

5

7

9

11

14

17

20

22

25

V.S.

28



31



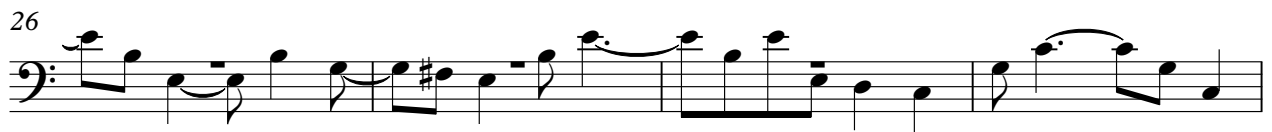
33



Acoustic Bass

Charlie's Angels - Charlie's Angels

♩ = 128,000000



Charlie's Angels - Charlie's Angels

Tremolo Strings

♩ = 128,000000
2

6

3

10

3

14

3

19

3

24

3

29

32