

# Syria - Syria

MELODY

♩ = 117,000114

Snare (d3)

Kick (c3)

BASS

New Track

RH

New Track

L.H.

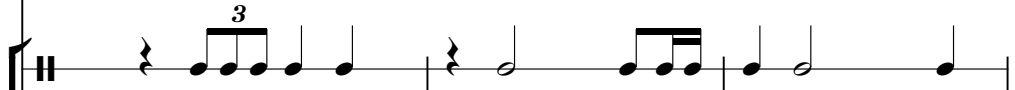
♩ = 117,000114

MELODY

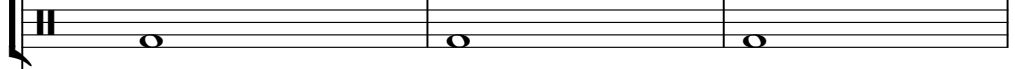
4



Snare (d3)



Kick (c3)



BASS



New Track



RH



New Track



L.H.



7

MELODY

Snare (d3)

Kick (c3)

BASS

New Track

RH

New Track

L.H.

Detailed description: This is a multi-track musical score for a piece in 3/4 time with a key signature of three sharps (F#, C#, G#). The score is divided into eight tracks. The MELODY track (treble clef) starts at measure 7 with a sequence of eighth and quarter notes, including a triplet of eighth notes. The Snare (d3) track (snare drum) features a pattern of quarter notes with two triplet eighth notes. The Kick (c3) track (kick drum) has a simple pattern of quarter notes. The BASS track (bass clef) provides a rhythmic accompaniment with quarter and eighth notes. The two 'New Track' tracks (bass clef) and the L.H. track (bass clef) all play a consistent bass line of quarter notes. The RH track (treble clef) provides harmonic accompaniment with chords and melodic lines, mirroring the MELODY track's structure.

MELODY

10

Snare (d3)

Kick (c3)

BASS

New Track

RH

New Track

L.H.

13

MELODY

Snare (d3)

Kick (c3)

BASS

New Track

RH

New Track

L.H.

MELODY

16

Musical staff for MELODY, measures 16-18. The staff is in treble clef with a key signature of three sharps (F#, C#, G#). Measure 16 contains a quarter note F#4, an eighth note G#4, a quarter note A4, and a quarter note B4. Measure 17 contains an eighth note G#4, a quarter note A4, an eighth note B4, a quarter note C5, a quarter rest, and a quarter note B4. Measure 18 contains a quarter note A4, an eighth note G#4, a quarter note F#4, and a quarter note E4.

Snare (d3)

Musical staff for Snare (d3), measures 16-18. Measure 16 has a snare drum hit followed by a triplet of eighth notes on the d3 line. Measure 17 has a snare drum hit followed by a triplet of eighth notes on the d3 line. Measure 18 has a snare drum hit followed by a quarter note on the d3 line.

Kick (c3)

Musical staff for Kick (c3), measures 16-18. Each measure (16, 17, and 18) contains a single quarter note on the c3 line.

BASS

Musical staff for BASS, measures 16-18. Measure 16 contains a quarter note F#3, a quarter note G#3, a quarter note A3, and a quarter note B3. Measure 17 contains a quarter note G#3, a quarter note A3, a quarter note B3, and a quarter note C4. Measure 18 contains a quarter note A3, a quarter note G#3, a quarter note F#3, and a quarter note E3.

New Track

Musical staff for New Track, measures 16-18. Measure 16 contains a quarter note F#3, a quarter note G#3, a quarter note A3, and a quarter note B3. Measure 17 contains a quarter note G#3, a quarter note A3, a quarter note B3, and a quarter note C4. Measure 18 contains a quarter note A3, a quarter note G#3, a quarter note F#3, and a quarter note E3.

RH

Musical staff for RH, measures 16-18. Measure 16 contains a quarter note F#4, a quarter note G#4, a quarter note A4, and a quarter note B4. Measure 17 contains an eighth note G#4, a quarter note A4, an eighth note B4, a quarter note C5, a quarter rest, and a quarter note B4. Measure 18 contains a quarter note A4, an eighth note G#4, a quarter note F#4, and a quarter note E4.

New Track

Musical staff for New Track, measures 16-18. Measure 16 contains a quarter note F#4, a quarter note G#4, a quarter note A4, and a quarter note B4. Measure 17 contains an eighth note G#4, a quarter note A4, an eighth note B4, a quarter note C5, a quarter rest, and a quarter note B4. Measure 18 contains a quarter note A4, an eighth note G#4, a quarter note F#4, and a quarter note E4.

L.H.

Musical staff for L.H., measures 16-18. Measure 16 contains a quarter note F#3, a quarter note G#3, a quarter note A3, and a quarter note B3. Measure 17 contains a quarter note G#3, a quarter note A3, a quarter note B3, and a quarter note C4. Measure 18 contains a quarter note A3, a quarter note G#3, a quarter note F#3, and a quarter note E3.

19

MELODY

Snare (d3)

Kick (c3)

Crash Cymbal (c#4)

BASS

New Track

RH

New Track

L.H.

MELODY

Syria - Syria

♩ = 117,000114

5

9

13

17

19



Snare (d3)

Syria - Syria

♩ = 117,000114

4/4

7

3

12

3

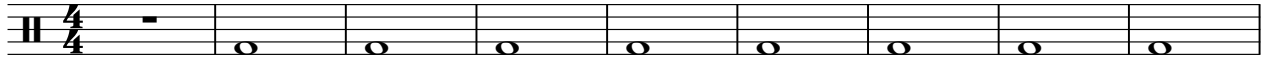
17

3

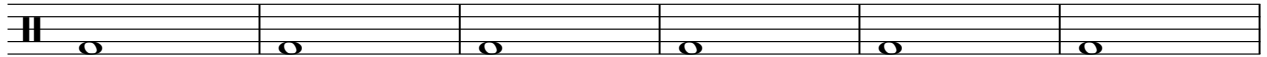
Kick (c3)

# Syria - Syria

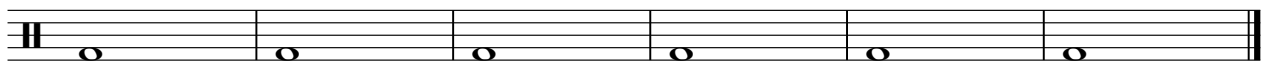
♩ = 117,000114



10



16



Crash Cymbal (c#4)

Syria - Syria

♩ = 117,000114

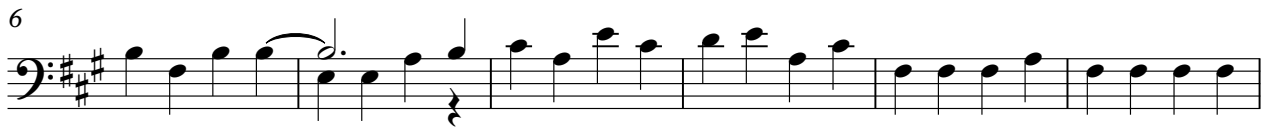
**20**



BASS

Syria - Syria

♩ = 117,000114



♩ = 117,000114



6



11



16



19



RH

# Syria - Syria

♩ = 117,000114

Measures 1-5 of the right-hand part. The music is in 4/4 time with a key signature of two sharps (F# and C#). The melody in the treble clef consists of quarter and eighth notes, while the bass clef provides a harmonic accompaniment with chords and some eighth-note patterns.

6

Measures 6-10. The melody continues with a mix of quarter and eighth notes. The bass line features a steady accompaniment of chords and eighth notes.

11

Measures 11-15. The melody includes some eighth-note runs. The bass line continues with a consistent accompaniment.

16

Measures 16-18. The melody features a prominent eighth-note pattern. The bass line provides a steady accompaniment.

19

Measures 19-22. The melody concludes with a series of quarter notes. The bass line continues with a steady accompaniment.

♩ = 117,000114

6

11

16

19

L.H.

# Syria - Syria

♩ = 117,000114



6



11



16



19

