

# Chet Atkins - Yakety Axe

♩ = 135,000137

Tenor Saxophone

Solo

Solo

Detailed description: This system contains the first two measures of the piece. The Tenor Saxophone part starts with a whole rest in both measures, followed by a triplet of eighth notes in the second measure. The two Solo parts (piano accompaniment) play a rhythmic pattern of eighth notes throughout both measures.

Ten. Sax.

Solo

Solo

Detailed description: This system contains measures 3 and 4. The Tenor Saxophone part features a triplet of eighth notes in measure 3 and another triplet in measure 4. The Solo parts continue with their rhythmic accompaniment.

Ten. Sax.

Solo

Solo

Detailed description: This system contains measures 5 and 6. The Tenor Saxophone part has a triplet of eighth notes in measure 5. The Solo parts continue with their rhythmic accompaniment.

Ten. Sax.

Solo

Solo

Detailed description: This system contains measures 7 and 8. The Tenor Saxophone part has a triplet of eighth notes in measure 7. The Solo parts continue with their rhythmic accompaniment.

6

Ten. Sax.

Solo

Solo

8

Ten. Sax.

Solo

Solo

10

Ten. Sax.

Solo

Solo

12

Ten. Sax.

Solo

Solo

13

Ten. Sax.

Solo

Solo

15

Ten. Sax.

Solo

Solo

17

Ten. Sax.

Solo

Solo

19

Solo

Solo

21

Ten. Sax.

Solo

Solo

22

Ten. Sax.

Solo

Solo

23

Ten. Sax.

Solo

Solo

25

Ten. Sax.

Solo

Solo

27

Ten. Sax.

Solo

Solo

28

Ten. Sax.

Solo

Solo

30

Ten. Sax.

Solo

Solo

31

Ten. Sax.

Solo

Solo

33

Ten. Sax.

Solo

Solo

35

Ten. Sax.

Solo

Solo

36

Ten. Sax.

Solo

Solo

38

Ten. Sax.

Solo

Solo

40

Ten. Sax.

Solo

Solo

This system contains measures 40 and 41. The Tenor Saxophone part (top staff) begins with two triplet eighth notes, followed by a series of eighth notes with various accidentals (sharps, flats, naturals). The Solo parts (middle and bottom staves) consist of chords and eighth notes, providing a harmonic accompaniment for the Tenor Saxophone.

42

Ten. Sax.

Solo

Solo

This system contains measures 42 and 43. The Tenor Saxophone part (top staff) features a triplet eighth note and a triplet quarter note, interspersed with other eighth notes. The Solo parts (middle and bottom staves) continue the accompaniment with chords and eighth notes.

44

Ten. Sax.

Solo

Solo

This system contains measures 44 and 45. The Tenor Saxophone part (top staff) features a triplet eighth note and continues with eighth notes. The Solo parts (middle and bottom staves) continue the accompaniment with chords and eighth notes.

Tenor Saxophone

Chet Atkins - Yakety Axe

♩ = 135,000137

4

6

9

11

13

15

17

2



Tenor Saxophone

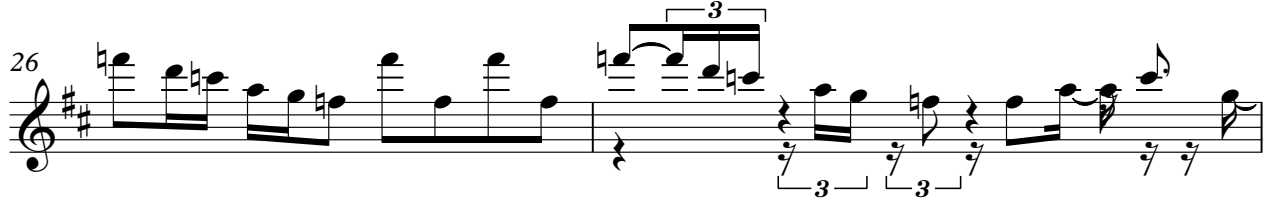
21



23



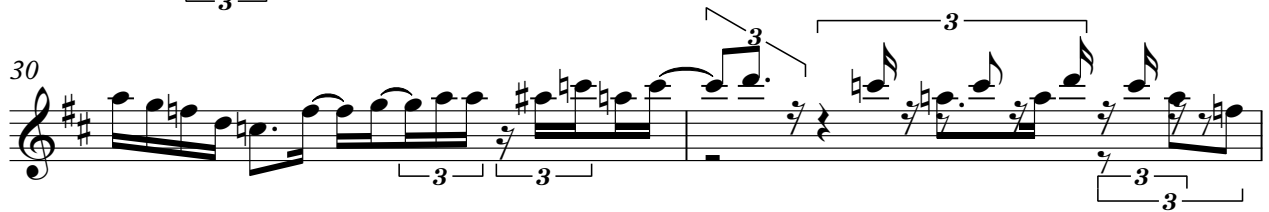
26



28



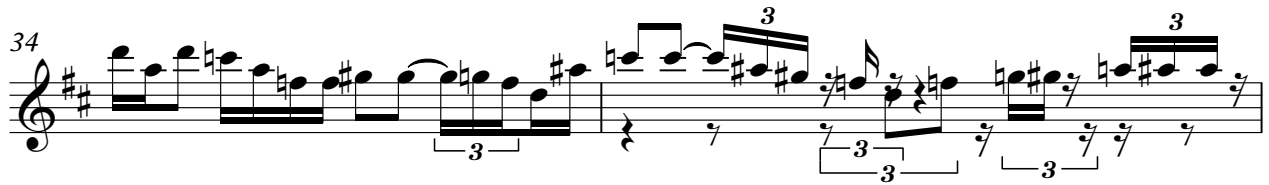
30



32



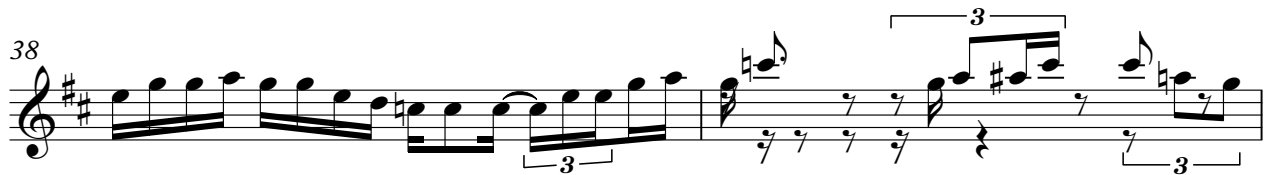
34



36



38



40



43 Tenor Saxophone 3 3 3

Musical notation for Tenor Saxophone, measures 43-44. Measure 43 contains a triplet of eighth notes, a quarter note, a quarter note, a quarter note, a quarter note, a quarter note, and a quarter note. Measure 44 contains a triplet of eighth notes, a quarter note, a quarter note, a quarter note, a quarter note, a quarter note, and a quarter note.

44

Musical notation for Tenor Saxophone, measure 44. Measure 44 contains a triplet of eighth notes, a quarter note, a quarter note, a quarter note, a quarter note, a quarter note, and a quarter note.

# Chet Atkins - Yakety Axe

Solo

♩ = 135,000137

4

6

9

12

14

17

20

22

25

V.S.

Solo

28



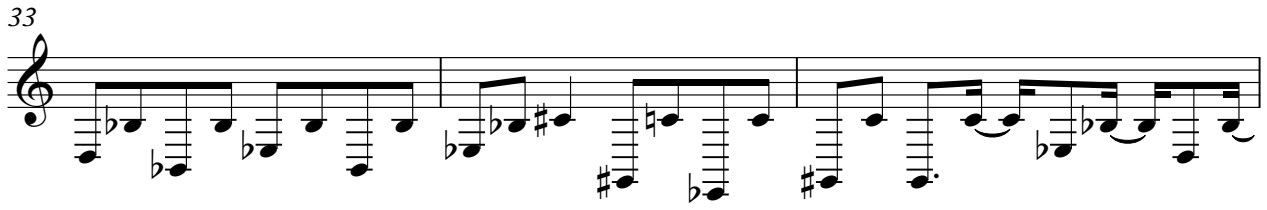
3

30

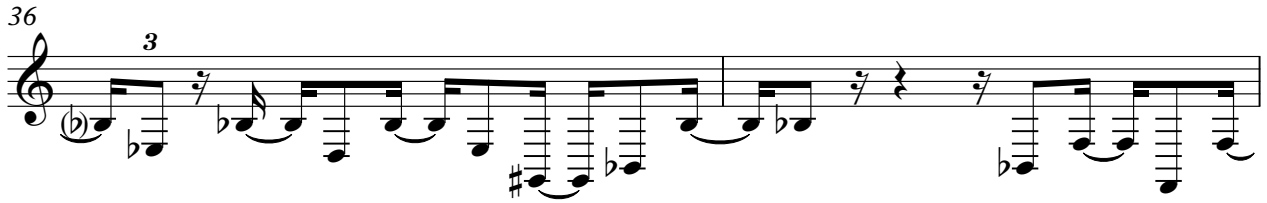


3

33

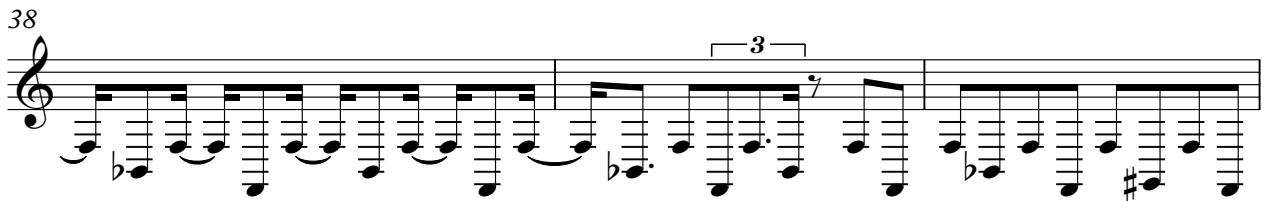


36



3

38



3

41



44



3

# Chet Atkins - Yakety Axe

Solo

♩ = 135,000137

4

6

9

13

17

20

22

25

29

V.S.

32



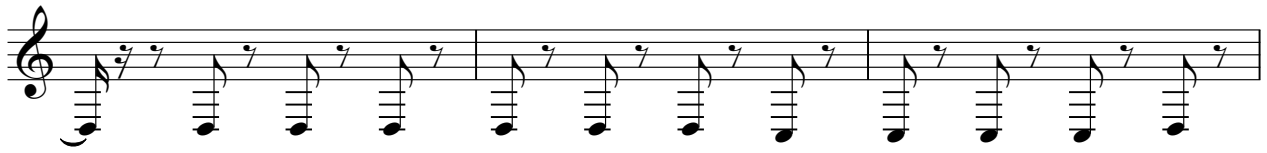
35



37



39



42

