

Lord Of The Rings - Isengard Unleashed

♩ = 160,000000

Trumpets

Timpani

Strings - 1

Strings - 2

Detailed description: This system contains the first four measures of the score. The Trumpets part is in treble clef with a key signature of one sharp (F#). It begins with a quarter rest, followed by a quarter note chord (F#, C#, G#), and then a half-note chord (F#, C#, G#) with a fermata. The Timpani part is in bass clef and plays a steady eighth-note pattern: C2, D2, E2, F2, G2, A2, B2, C3, D3, E3, F3, G3, A3, B3, C4. The Strings - 1 part is in alto clef with a key signature of one sharp. It starts with a quarter rest, followed by a quarter note chord (F#, C#, G#), and then a half-note chord (F#, C#, G#) with a fermata. The Strings - 2 part is in bass clef and plays a steady eighth-note pattern: C2, D2, E2, F2, G2, A2, B2, C3, D3, E3, F3, G3, A3, B3, C4.

5

Trumpets

Timpani

Strings - 1

Strings - 2

Detailed description: This system contains measures 5 through 8. The Trumpets part continues with a quarter note chord (F#, C#, G#), followed by a quarter note chord (F#, C#, G#), and then a half-note chord (F#, C#, G#) with a fermata. The Timpani part continues with the same eighth-note pattern. The Strings - 1 part continues with a quarter note chord (F#, C#, G#), followed by a quarter note chord (F#, C#, G#), and then a half-note chord (F#, C#, G#) with a fermata. The Strings - 2 part continues with the same eighth-note pattern.

Composed by Howard Shore, Arranged by Matt Furda
Isengard Unleashed
From Lord of the Rings: The Two Towers

9

Trumpets

Timpani

Strings - 1

Strings - 2

13

Trumpets

Timpani

Strings - 1

Strings - 2

17

Trumpets

Timpani

Strings - 1

Strings - 2

21

Trumpets

Timpani

Strings - 1

Strings - 2

Detailed description: This system covers measures 21 to 25. The Trumpets part (top staff) features sustained chords in the right hand, with notes tied across measures. The Timpani part (second staff) plays a rhythmic pattern of eighth notes, alternating between two different chordal accompaniments. The Strings - 1 part (third staff) plays sustained chords, mirroring the Trumpets. The Strings - 2 part (bottom staff) plays a rhythmic pattern of eighth notes, mirroring the Timpani.

26

Trumpets

Timpani

Strings - 1

Strings - 2

Detailed description: This system covers measures 26 to 30. The Trumpets part (top staff) begins with moving eighth-note lines in the right hand, then transitions to sustained chords. The Timpani part (second staff) continues with a rhythmic pattern of eighth notes, with some notes marked with a flat. The Strings - 1 part (third staff) plays moving lines in the right hand, then transitions to sustained chords. The Strings - 2 part (bottom staff) continues with a rhythmic pattern of eighth notes, with some notes marked with a flat.

30

Trumpets

Timpani

Choir

Strings - 1

Strings - 2

35

Trumpets

Timpani

Choir

Strings - 1

Strings - 2

41

Trumpets

Timpani

Choir

Strings - 1

Strings - 2

46

Trumpets

Timpani

Choir

Strings - 1

Strings - 2

49

Trumpets

Timpani

Choir

Strings - 1

Strings - 2

52

Trumpets

Timpani

Choir

Strings - 1

Strings - 2

55

Trumpets

Timpani

Choir

Strings - 1

Strings - 2

58

Trumpets

Timpani

Choir

Strings - 1

Strings - 2

63

Trumpets

Timpani

Choir

Strings - 1

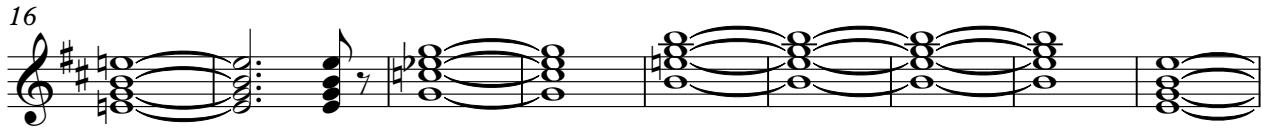
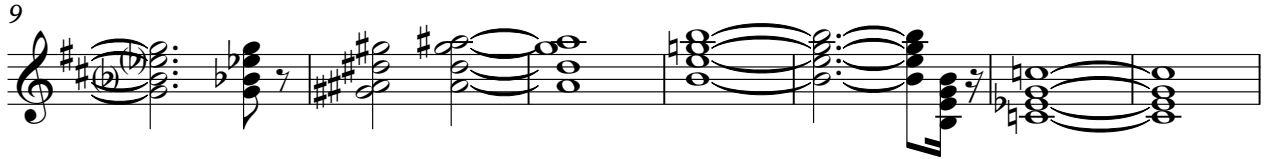
Strings - 2

This musical score page contains five staves for measures 63 through 68. The top staff is for Trumpets, written in treble clef with a key signature of one flat. It features a complex texture of chords and melodic lines. The second staff is for Timpani, written in bass clef, with a simple rhythmic pattern of quarter notes. The third staff is for the Choir, written in treble clef, featuring a vocal line with various intervals and rests. The bottom two staves are for Strings - 1 and Strings - 2, both in treble clef. They play a similar complex texture of chords and melodic lines, mirroring the Trumpets. The score concludes with a double bar line at the end of measure 68.

Lord Of The Rings - Isengard Unleashed

Trumpets

♩ = 160,000000



Composed by Howard Shore, Arranged by Matt Furda
Isengard Unleashed

From Lord of the Rings: The Two Towers

V.S.

Timpani

Lord Of The Rings - Isengard Unleashed

♩ = 160,000000



6



11



16



21



26



31



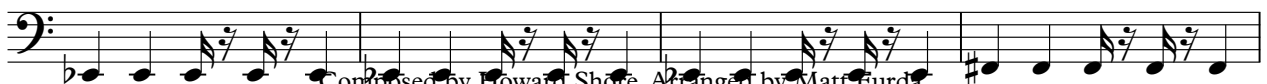
38



46



50



Composed by Howard Shore, Arranged by Matt Furda
Isengard Unleashed

From Lord of the Rings: The Two Towers

V.S.

2

Timpani

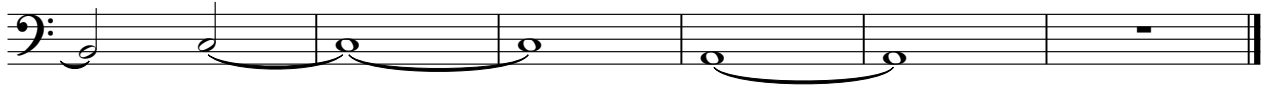
54



58



63



Lord Of The Rings - Isengard Unleashed

Choir

♩ = 160,000000
30



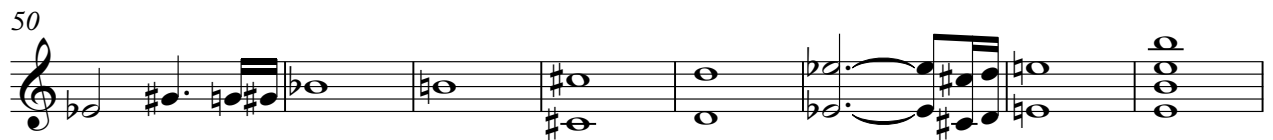
36



43



50



58

3



64



Composed by Howard Shore, Arranged by Matt Furda
Isengard Unleashed
From Lord of the Rings: The Two Towers

Lord Of The Rings - Isengard Unleashed

Strings - 1

$\text{♩} = 160,000000$

9

16

25

32

39

45

49

53

57

Composed by Howard Shore, Arranged by Matt Furda
Isengard Unleashed
From Lord of the Rings: The Two Towers

V.S.

2

Strings - 1

63

The musical score for 'Strings - 1' consists of six measures. Measure 63 begins with a treble clef, a key signature of one sharp (F#), and a 3/4 time signature. The first measure contains a whole note chord with notes G4, B4, and D5. The second measure contains a whole note chord with notes G4, B4, and D5. The third measure contains a whole note chord with notes G4, B4, and D5. The fourth measure contains a whole note chord with notes G4, B4, and D5. The fifth measure contains a whole note chord with notes G4, B4, and D5. The sixth measure contains a whole note chord with notes G4, B4, and D5.

Strings - 2

Lord Of The Rings - Isengard Unleashed

♩ = 160,000000

6

11

16

21

26

31

38

46

50

Composed by Howard Shore, Arranged by Matt Furda
Isengard Unleashed
From Lord of the Rings: The Two Towers

V.S.

2

Strings - 2

54

Musical notation for strings 2, measures 54-62. The notation is in bass clef with a key signature of one sharp (F#). It features a rhythmic pattern of eighth notes with stems pointing down, often beamed in pairs. The notes are mostly quarter notes and eighth notes, with some rests. The first measure has a sharp sign above the staff. The key signature changes to one flat (Bb) at measure 57.

58

Musical notation for strings 2, measures 58-62. The notation is in bass clef with a key signature of one flat (Bb). It features a rhythmic pattern of eighth notes with stems pointing down, often beamed in pairs. The notes are mostly quarter notes and eighth notes, with some rests. The first measure has a sharp sign above the staff. The key signature changes to one flat (Bb) at measure 57.

63

Musical notation for strings 2, measures 63-67. The notation is in bass clef with a key signature of one flat (Bb). It features a rhythmic pattern of eighth notes with stems pointing down, often beamed in pairs. The notes are mostly quarter notes and eighth notes, with some rests. The first measure has a sharp sign above the staff. The key signature changes to one flat (Bb) at measure 63.