

Iron Maiden - Be Quick Or Be Dead

♩ = 240,000000

DRUM

VOCAL

GUITAR 1

GUITAR 2

BASS

Detailed description: This system shows the first two measures of the song. The tempo is marked as ♩ = 240,000000. The time signature is 4/4. The DRUM part features a steady eighth-note pattern. The VOCAL part is silent. The GUITAR 1, GUITAR 2, and BASS parts are also silent, with only a few notes appearing at the end of the second measure.



3

DRUM

GUITAR 1

GUITAR 2

BASS

Detailed description: This system shows the next three measures. The DRUM part has a triplet of eighth notes in the first measure, followed by a steady eighth-note pattern. The GUITAR 1 and GUITAR 2 parts play a complex eighth-note melody. The BASS part plays a steady eighth-note line.

6

DRUM

GUITAR 1

GUITAR 2

BASS



9

DRUM

GUITAR 1

GUITAR 2

BASS

12

DRUM

VOCAL

GUITAR 1

GUITAR 2

BASS



15

DRUM

VOCAL

GUITAR 1

GUITAR 2

BASS

18

DRUM

VOCAL

GUITAR 1

GUITAR 2

BASS



21

DRUM

VOCAL

GUITAR 1

GUITAR 2

BASS

24

DRUM

VOCAL

GUITAR 1

GUITAR 2

BASS



27

DRUM

VOCAL

GUITAR 1

GUITAR 2

BASS

29

DRUM

VOCAL

GUITAR 1

GUITAR 2

BASS



32

DRUM

VOCAL

GUITAR 1

GUITAR 2

BASS

35

DRUM

VOCAL

GUITAR 1

GUITAR 2

BASS

CHORUS



37

DRUM

VOCAL

GUITAR 1

GUITAR 2

BASS

CHORUS

40

DRUM

VOCAL

GUITAR 1

GUITAR 2

BASS

CHORUS



43

DRUM

VOCAL

GUITAR 1

GUITAR 2

BASS

CHORUS

45

DRUM

VOCAL

GUITAR 1

GUITAR 2

BASS

CHORUS



48

DRUM

VOCAL

GUITAR 1

GUITAR 2

BASS

51

DRUM

VOCAL

GUITAR 1

GUITAR 2

BASS



54

DRUM

VOCAL

GUITAR 1

GUITAR 2

BASS

57

DRUM

VOCAL

GUITAR 1

GUITAR 2

BASS



60

DRUM

VOCAL

GUITAR 1

GUITAR 2

BASS

63

DRUM

VOCAL

GUITAR 1

GUITAR 2

BASS



66

DRUM

VOCAL

GUITAR 1

GUITAR 2

BASS

68

DRUM

VOCAL

GUITAR 1

GUITAR 2

BASS



71

DRUM

VOCAL

GUITAR 1

GUITAR 2

BASS

74

DRUM

VOCAL

GUITAR 1

GUITAR 2

BASS



77

DRUM

VOCAL

GUITAR 1

GUITAR 2

BASS

80

DRUM

VOCAL

GUITAR 1

GUITAR 2

BASS



83

DRUM

VOCAL

GUITAR 1

GUITAR 2

BASS

86

DRUM

VOCAL

GUITAR 1

GUITAR 2

BASS



89

DRUM

VOCAL

GUITAR 1

GUITAR 2

BASS

92

DRUM

VOCAL

GUITAR 1

GUITAR 2

BASS



94

DRUM

VOCAL

GUITAR 1

GUITAR 2

BASS

97

DRUM

VOCAL

GUITAR 1

GUITAR 2

BASS



100

DRUM

GUITAR 1

GUITAR 2

JANNICK SOLO

BASS

102

DRUM

GUITAR 1

GUITAR 2

JANNICK SOLO

BASS



105

DRUM

GUITAR 1

GUITAR 2

JANNICK SOLO

BASS

107

DRUM

GUITAR 1

GUITAR 2

JANNICK SOLO

BASS



109

DRUM

VOCAL

GUITAR 1

GUITAR 2

JANNICK SOLO

BASS

111

DRUM

VOCAL

GUITAR 1

GUITAR 2

BASS



114

DRUM

VOCAL

GUITAR 1

GUITAR 2

BASS

116

DRUM

VOCAL

GUITAR 1

GUITAR 2

BASS

Detailed description: This block contains the musical score for measures 116, 117, and 118. The score is arranged in a system with five staves: DRUM, VOCAL, GUITAR 1, GUITAR 2, and BASS. The key signature has one flat (B-flat). The drum part features a consistent pattern of eighth notes with accents on measures 116 and 117. The vocal line has a melodic phrase in measure 116, a rest in measure 117, and continues in measure 118. The guitar parts (1 and 2) play a similar melodic line with chords, while the bass line provides a steady eighth-note accompaniment.



119

DRUM

VOCAL

GUITAR 1

GUITAR 2

BASS

Detailed description: This block contains the musical score for measures 119, 120, and 121. The score is arranged in a system with five staves: DRUM, VOCAL, GUITAR 1, GUITAR 2, and BASS. The key signature has one flat (B-flat). The drum part continues with eighth notes, adding accents in measure 121. The vocal line has a melodic phrase in measure 119, a rest in measure 120, and continues in measure 121. The guitar parts (1 and 2) play a similar melodic line with chords, while the bass line provides a steady eighth-note accompaniment.

122

DRUM

VOCAL

GUITAR 1

GUITAR 2

BASS

Detailed description: This system contains measures 122, 123, and 124. The drum part features a consistent pattern of eighth notes in the first two measures, followed by a variation in the third measure including a snare drum and a cymbal. The vocal line consists of a melodic sequence of notes. Both guitar parts play a rhythmic eighth-note pattern, with the second guitar part adding chordal accompaniment. The bass line provides a steady eighth-note accompaniment.



125

DRUM

VOCAL

GUITAR 1

GUITAR 2

BASS

CHORUS

Detailed description: This system contains measures 125, 126, and 127. The drum part continues with a pattern of eighth notes and includes snare and cymbal accents. The vocal line has a rest in measure 125, followed by a melodic phrase in measures 126 and 127. The guitar parts continue with their respective rhythmic and chordal patterns. The bass line maintains its eighth-note accompaniment. A new staff labeled 'CHORUS' is introduced at the bottom, showing a rest in measure 125 and a melodic phrase in measure 127.

128

DRUM

VOCAL

GUITAR 1

GUITAR 2

BASS

CHORUS



131

DRUM

VOCAL

GUITAR 1

GUITAR 2

BASS

CHORUS

134

DRUM

VOCAL

GUITAR 1

GUITAR 2

BASS

CHORUS

Detailed description: This system of musical notation covers measures 134 and 135. The DRUM part features a consistent pattern of quarter notes with accents. The VOCAL part has a melodic line with some rests. GUITAR 1 and GUITAR 2 play a steady eighth-note accompaniment. The BASS part provides a rhythmic foundation with eighth notes. The CHORUS part is mostly silent, with a few notes at the end of measure 135.



136

DRUM

VOCAL

GUITAR 1

GUITAR 2

BASS

CHORUS

Detailed description: This system of musical notation covers measures 136, 137, and 138. The DRUM part shows a variation in its pattern, including some eighth notes with accents. The VOCAL part continues its melodic line. GUITAR 1 and GUITAR 2 maintain their eighth-note accompaniment. The BASS part continues with eighth notes. The CHORUS part has a few notes in measure 136 and then remains silent for the rest of the system.

139

DRUM

VOCAL

GUITAR 1

GUITAR 2

BASS



142

DRUM

VOCAL

GUITAR 1

GUITAR 2

BASS

145

DRUM

VOCAL

GUITAR 1

GUITAR 2

BASS



148

DRUM

VOCAL

GUITAR 1

GUITAR 2

BASS

151

DRUM

VOCAL

GUITAR 1

GUITAR 2

BASS



154

DRUM

VOCAL

GUITAR 1

GUITAR 2

BASS

157

DRUM

VOCAL

GUITAR 1

GUITAR 2

JANNICK SOLO

BASS



159

DRUM

GUITAR 1

GUITAR 2

JANNICK SOLO

BASS

162

DRUM

GUITAR 1

GUITAR 2

JANNICK SOLO

BASS



164

DRUM

GUITAR 1

GUITAR 2

JANNICK SOLO

BASS

166

DRUM

GUITAR 1

GUITAR 2

JANNICK SOLO

BASS



168

DRUM

GUITAR 1

GUITAR 2

JANNICK SOLO

BASS

170

DRUM

GUITAR 1

GUITAR 2

JANNICK SOLO

BASS



172

DRUM

GUITAR 1

GUITAR 2

JANNICK SOLO

DAVE SOLO

BASS

174

DRUM

GUITAR 1

GUITAR 2

DAVE SOLO

BASS

DAVE SOLO HARMONY



177

DRUM

GUITAR 1

GUITAR 2

DAVE SOLO

BASS

DAVE SOLO HARMONY

179

DRUM

GUITAR 1

GUITAR 2

DAVE SOLO

BASS



180

DRUM

GUITAR 1

GUITAR 2

DAVE SOLO

BASS

182

DRUM

GUITAR 1

GUITAR 2

DAVE SOLO

BASS



185

DRUM

GUITAR 1

GUITAR 2

DAVE SOLO

BASS

187

DRUM

GUITAR 1

GUITAR 2

DAVE SOLO

BASS



188

DRUM

GUITAR 1

GUITAR 2

DAVE SOLO

BASS

189

DRUM

VOCAL

GUITAR 1

GUITAR 2

DAVE SOLO

BASS



191

DRUM

VOCAL

GUITAR 1

GUITAR 2

DAVE SOLO

BASS

CHORUS

193

DRUM

VOCAL

GUITAR 1

GUITAR 2

BASS

CHORUS



196

DRUM

VOCAL

GUITAR 1

GUITAR 2

BASS

CHORUS

199

DRUM

VOCAL

GUITAR 1

GUITAR 2

BASS

CHORUS

Detailed description: This system of musical notation covers measures 199 and 200. The DRUM part features a consistent pattern of eighth notes with accents. The VOCAL part consists of a melodic line with eighth and quarter notes. GUITAR 1 and GUITAR 2 play a rhythmic accompaniment of eighth notes, with a key signature change to one flat (B-flat) at the start of measure 200. The BASS part follows a similar eighth-note pattern. The CHORUS part is mostly silent, with a few notes appearing in measure 200.



201

DRUM

VOCAL

GUITAR 1

GUITAR 2

BASS

CHORUS

Detailed description: This system of musical notation covers measures 201, 202, and 203. The DRUM part includes accents and asterisks over the first few notes in measure 201, followed by a steady eighth-note pattern. The VOCAL part has a melodic line with some rests. GUITAR 1 and GUITAR 2 play a complex eighth-note accompaniment. The BASS part continues with a steady eighth-note pattern. The CHORUS part is mostly silent, with a few notes appearing in measure 201.

204

DRUM

VOCAL

GUITAR 1

GUITAR 2

BASS

Detailed description: This system of musical notation covers measures 204, 205, and 206. The DRUM part features a complex pattern of eighth and sixteenth notes with asterisks above some notes, indicating specific drum sounds. The VOCAL part consists of a melodic line with a long note in measure 206. GUITAR 1 and GUITAR 2 play a rhythmic accompaniment with eighth notes and chords. The BASS part provides a steady eighth-note accompaniment.



207

DRUM

VOCAL

GUITAR 1

GUITAR 2

BASS

Detailed description: This system of musical notation covers measures 207, 208, 209, and 210. The DRUM part has a simpler pattern of eighth notes. The VOCAL part has a long note in measure 207 and a short note in measure 210. GUITAR 1 and GUITAR 2 continue with their rhythmic accompaniment. The BASS part has a more active line with eighth notes and rests.

210

DRUM

VOCAL

GUITAR 1

GUITAR 2

BASS



212

DRUM

VOCAL

GUITAR 1

GUITAR 2

BASS

Iron Maiden - Be Quick Or Be Dead

DRUM

♩ = 240,000000

5

10

14

19

23

27

31

35

40

V.S.

DRUM

45

Musical notation for drum part, measures 45-49. The notation shows a steady bass drum pattern with snare accents on measures 45, 47, and 49.

50

Musical notation for drum part, measures 50-54. The notation shows a steady bass drum pattern with snare accents on measures 50, 52, and 54.

55

Musical notation for drum part, measures 55-59. The notation shows a steady bass drum pattern with snare accents on measures 55, 57, and 59.

60

Musical notation for drum part, measures 60-64. The notation shows a steady bass drum pattern with snare accents on measures 60, 62, and 64.

65

Musical notation for drum part, measures 65-68. The notation shows a steady bass drum pattern with snare accents on measures 65, 67, and 68. It includes a triplet and a sixteenth-note group.

69

Musical notation for drum part, measures 69-73. The notation shows a steady bass drum pattern with snare accents on measures 69, 71, and 73.

74

Musical notation for drum part, measures 74-78. The notation shows a steady bass drum pattern with snare accents on measures 74, 76, and 78.

79

Musical notation for drum part, measures 79-83. The notation shows a steady bass drum pattern with snare accents on measures 79, 81, and 83.

84

Musical notation for drum part, measures 84-88. The notation shows a steady bass drum pattern with snare accents on measures 84, 86, and 88.

89

Musical notation for drum part, measures 89-92. The notation shows a steady bass drum pattern with snare accents on measures 89, 91, and 92. It includes a sixteenth-note group.

DRUM

93

97

101

105

109

113

117

121

125

130

V.S.

DRUM

135

Musical notation for drum part 135, featuring a series of eighth notes and quarter notes with various accents and rests.

140

Musical notation for drum part 140, featuring a series of eighth notes and quarter notes with various accents and rests.

145

Musical notation for drum part 145, featuring a series of eighth notes and quarter notes with various accents and rests.

150

Musical notation for drum part 150, featuring a series of eighth notes and quarter notes with various accents and rests.

155

Musical notation for drum part 155, featuring a series of eighth notes and quarter notes with various accents and rests, including a triplet of eighth notes.

159

Musical notation for drum part 159, featuring a series of eighth notes and quarter notes with various accents and rests.

164

Musical notation for drum part 164, featuring a series of eighth notes and quarter notes with various accents and rests.

169

Musical notation for drum part 169, featuring a series of eighth notes and quarter notes with various accents and rests.

174

Musical notation for drum part 174, featuring a series of eighth notes and quarter notes with various accents and rests.

179

Musical notation for drum part 179, featuring a series of eighth notes and quarter notes with various accents and rests.

184

Musical notation for drum part 184, consisting of two staves. The top staff contains a series of eighth notes with stems pointing up, and the bottom staff contains a corresponding bass line with eighth notes and rests.

188

Musical notation for drum part 188, consisting of two staves. It features a triplet of eighth notes, a sextuplet of eighth notes, and several eighth notes with stems pointing up. The bottom staff contains a bass line with eighth notes and rests.

192

Musical notation for drum part 192, consisting of two staves. It features eighth notes with stems pointing up and eighth notes with stems pointing down. The bottom staff contains a bass line with eighth notes and rests.

197

Musical notation for drum part 197, consisting of two staves. It features eighth notes with stems pointing up and eighth notes with stems pointing down. The bottom staff contains a bass line with eighth notes and rests.

202

Musical notation for drum part 202, consisting of two staves. It features eighth notes with stems pointing up and eighth notes with stems pointing down. The bottom staff contains a bass line with eighth notes and rests.

207

Musical notation for drum part 207, consisting of two staves. It features eighth notes with stems pointing up and eighth notes with stems pointing down. The bottom staff contains a bass line with eighth notes and rests.

211

Musical notation for drum part 211, consisting of two staves. It features eighth notes with stems pointing up and eighth notes with stems pointing down. The bottom staff contains a bass line with eighth notes and rests.

Iron Maiden - Be Quick Or Be Dead

VOCAL

♩ = 240,000000

11

18

24

29

34

40

46

53

60

67

V.S.

74



81



87



94



109



114



120



126



132



138



145



152



158



194



200



206



211



Iron Maiden - Be Quick Or Be Dead

GUITAR 1

♩ = 240,000000

6

10

14

19

23

27

31

35

39

V.S.

43

47

51

55

59

63

68

77

83

88



V.S.

135

139

143

147

151

155

159

164

169

173

177



182



187



191



195



199



203



207



211



Iron Maiden - Be Quick Or Be Dead

GUITAR 2

♩ = 240,000000

6

10

14

19

23

27

31

35

39

V.S.

43



47



51



56



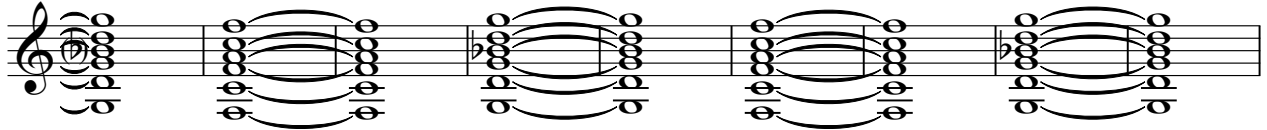
60



64



70



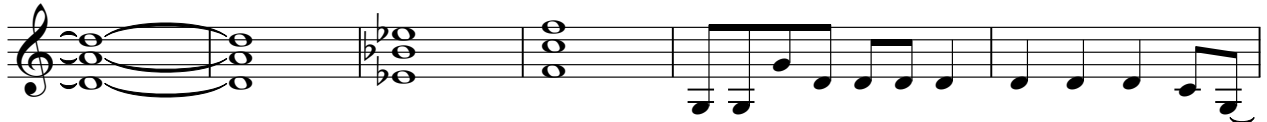
79



85



90



96

100

104

108

112

116

120

124

128

132

V.S.

136



140



145



149



153



157



161



166



170



174



179



184



189



193



197



201



205



210



DAVE SOLO

Iron Maiden - Be Quick Or Be Dead

♩ = 240,000000

172

177

180

184

188

190

23

Iron Maiden - Be Quick Or Be Dead

BASS

♩ = 240,000000



6



10



14



18



22



27



31



35



39



V.S.

43



47



51



56



61



65



69



74



79



83



172



177



182



187



192



196



200



204



209

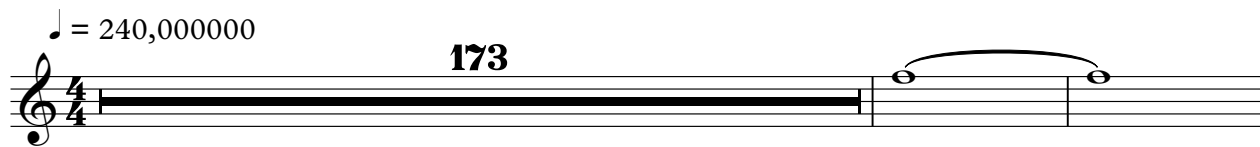


212

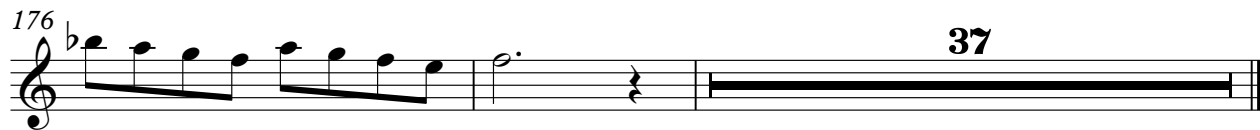


♩ = 240,000000

173



176



37

