

TWENTY FOUR MINUETS,

In Three Parts

Compos'd by the most Eminent Masters Viz.

ARNE, ABEL, COCCHI, BATES, CLAGGETT,

As Perform'd at the Borough Assembly,

Selected and properly Adapted for Dancing by

M^R: S E T T R E E

Master of the Ceremonies,

*To be had of M^r: Settree, at his Academy Southampton Buildings Chancery Lane
And at M^r: Rutherfords Music Warehouse S^t: Martins Court, Leicester Square*

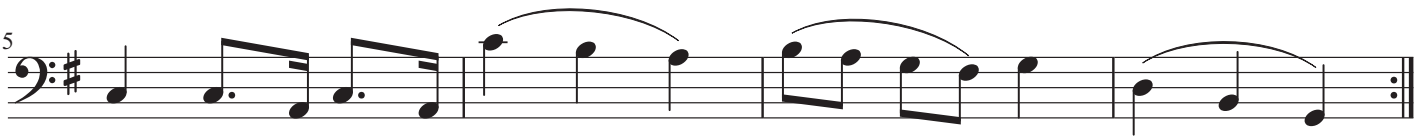
Transposed For Solo Cello



J.S.H.

The New Borough Assembly Minuet

Settree



Conway's Minuet

Settree



Fine

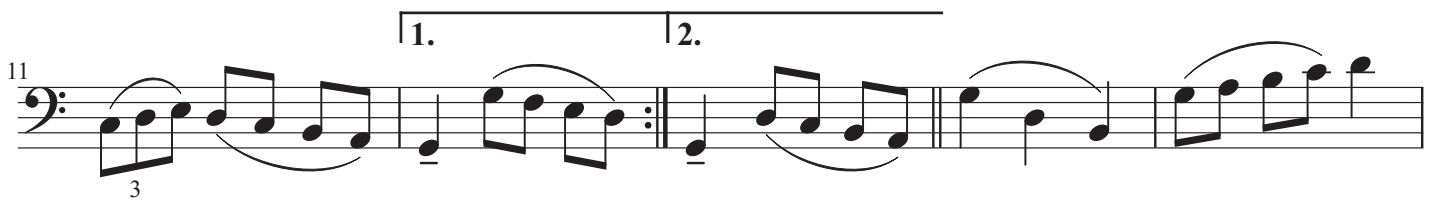


D.C. al Fine



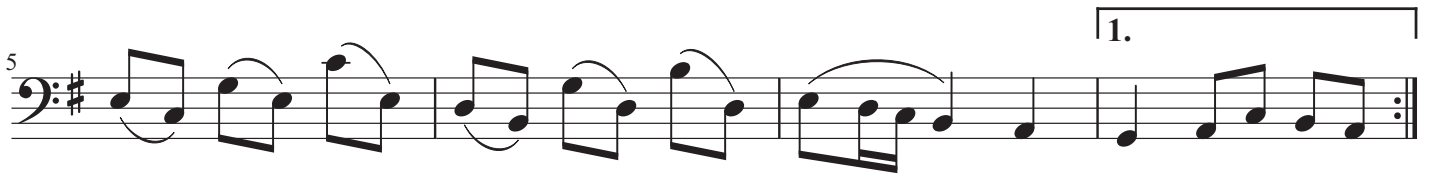
General Johnstons Minuet

Settree



The Duke of Bedford's Minuet

Settree



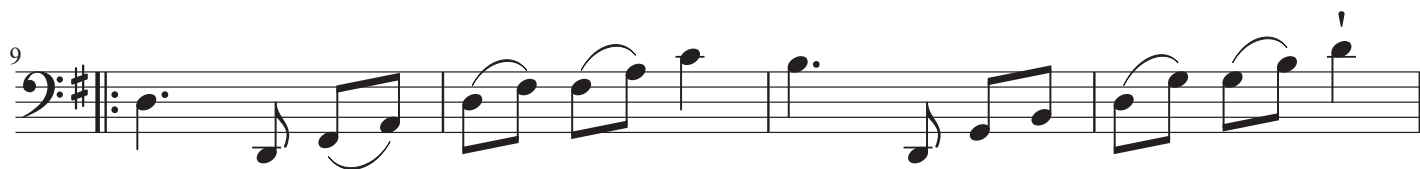
The Duke of Richmond's Minuet

Settree



Lord Tufton's Minuet

Settree



hold on repeat
end

Miss Pigotts Minuet

Settree

Musical notation for the first staff, measures 1-4. The key signature is one sharp (F#) and the time signature is 3/4. The notation includes a repeat sign at the beginning and various note values such as quarter notes, eighth notes, and sixteenth notes, along with slurs and accents.

Musical notation for the second staff, measures 5-8. The notation includes a measure rest at the beginning, followed by eighth and sixteenth notes with slurs and accents, ending with a repeat sign.

Musical notation for the third staff, measures 9-12. The notation includes a measure rest at the beginning, followed by eighth and sixteenth notes with slurs and accents, ending with a repeat sign.

Musical notation for the fourth staff, measures 13-16. The notation includes a measure rest at the beginning, followed by eighth and sixteenth notes with slurs and accents, ending with a repeat sign.

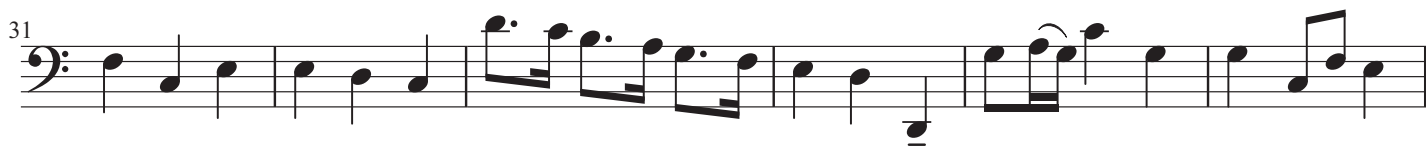
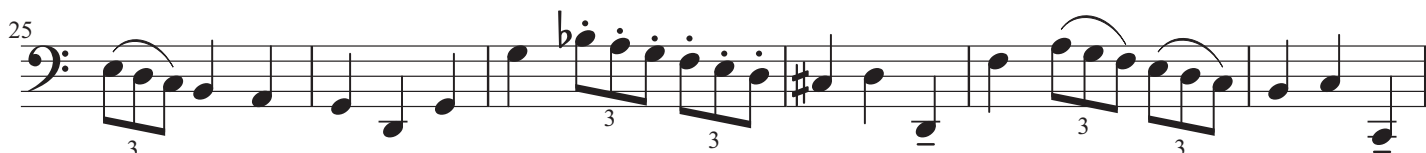
Lady North's Minuet

Settree



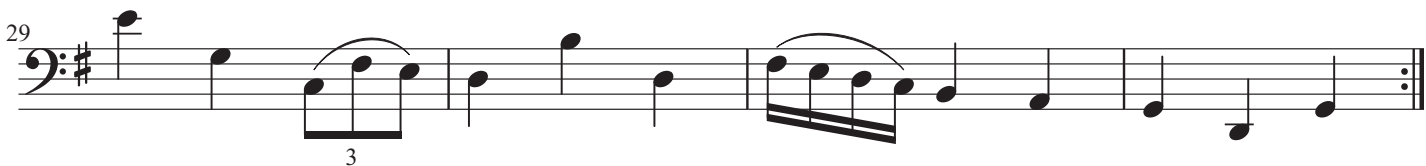
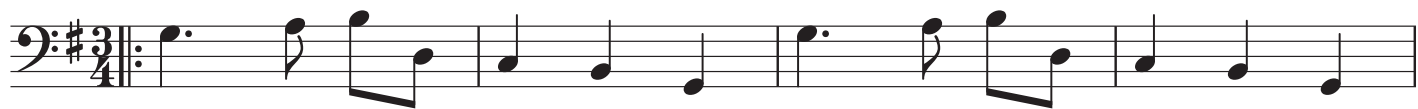
Mr Sharps Minuet

Settree



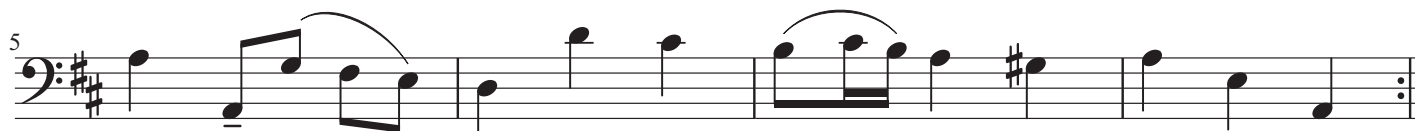
Miss Akerman's Minuet

Settree



Miss Robert's Minuet

Settree



Miss Reed's Minuet

Settree



Miss Lucy Howard's Minuet

Settree



Miss Pott's Minuet

Settree

The first staff of music is in bass clef, with a key signature of two sharps (F# and C#) and a 3/4 time signature. It begins with a repeat sign. The melody consists of quarter and eighth notes, with three triplet markings (indicated by a '3' below the notes) in the latter half of the staff.

The second staff of music starts at measure 5. It continues the melody with quarter and eighth notes, including three triplet markings. The staff concludes with a double bar line and repeat dots.

The third staff of music starts at measure 9. It features a sequence of quarter and eighth notes, with two triplet markings. The staff ends with a double bar line and repeat dots.

The fourth staff of music starts at measure 13. It contains quarter and eighth notes with three triplet markings. The staff concludes with a double bar line and repeat dots.

The fifth staff of music starts at measure 17. It begins with a triplet of eighth notes, followed by quarter and eighth notes. The staff ends with a double bar line and repeat dots.

Miss Fry's Minuet

Settree

This musical score for 'Miss Fry's Minuet' by Settree is written in bass clef, 3/4 time, and G major. The piece consists of 40 measures, organized into eight staves of five measures each. The notation features several trills (tr) and triplets (3). The piece begins with a repeat sign at the start of the first measure. The final measure of the eighth staff concludes with a double bar line and repeat dots.

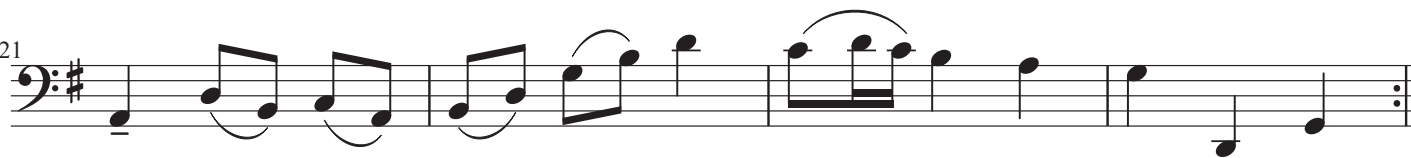
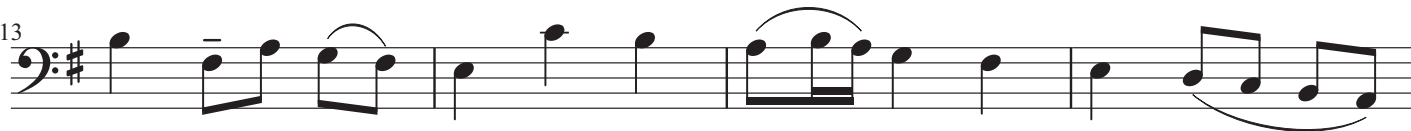
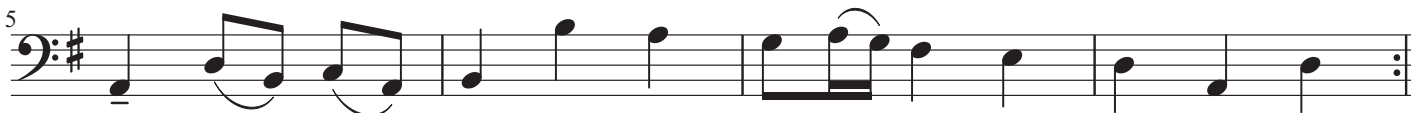
Miss Wathen's Minuet

Settree



Miss Walpole's Minuet

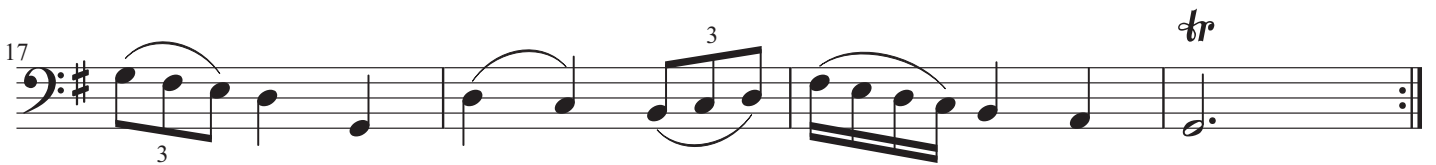
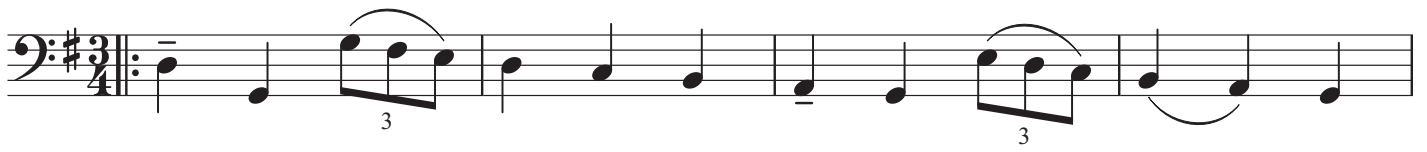
Settree



Hold & End
on Repeat

Miss Hart's Minuet

Settree



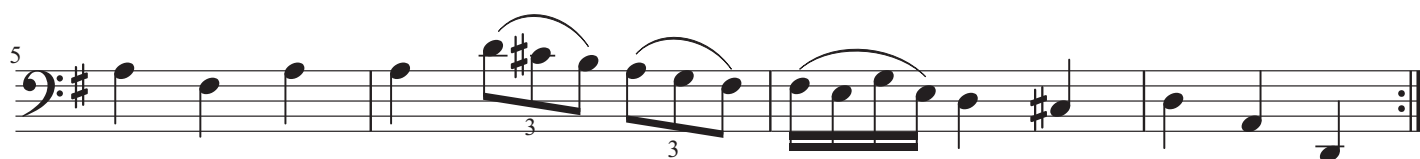
Miss Johnstons Minuet

Settree



Lord Petershams Minuet

Settree



Minor

Settree



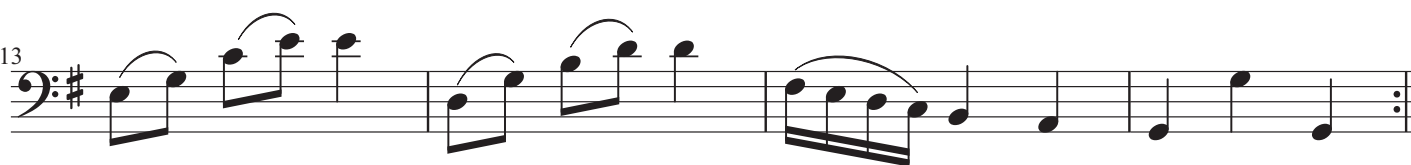
Mr Richard Dupuis Minuet

Settree



Lady Mawby's Minuet

Settree



Earl Percy's Minuet

Settree

1

6

11

16

21

26

31

36

41

46

Miss Grr i s Minuet

Settree

