

# Kusiaku\_Kossi\_Assaf-Manyron\_o

♩ = 100,000000

The image displays a musical score for the piece "Kusiaku\_Kossi\_Assaf-Manyron\_o". The score is written in 4/4 time and features a tempo marking of ♩ = 100,000000. It consists of ten staves, each with a specific label: Alto, Solo, A., Solo, A., Solo, A., Solo, A., and Solo. The notation includes various musical symbols such as notes, rests, and accidentals. The key signature is one sharp (F#), and the time signature is 4/4. The score is organized into measures, with measure numbers 5, 9, 13, and 17 indicated at the beginning of their respective staves. The Alto and Solo parts are written in treble clef, while the A. parts are written in bass clef. The Solo parts at the bottom of the score include a key signature change to one sharp (F#) and a time signature change to 3/4.

22

A.

Solo

This system contains two staves. The top staff, labeled 'A.', is in treble clef with a key signature of one sharp (F#) and a 4/4 time signature. It features a sequence of chords and melodic lines. The bottom staff, labeled 'Solo', is also in treble clef and contains a complex melodic line with many beamed eighth and sixteenth notes, including some triplets and slurs.

26

A.

Solo

This system contains two staves. The top staff, labeled 'A.', continues the chordal and melodic progression from the previous system. The bottom staff, labeled 'Solo', continues the intricate melodic line with various rhythmic patterns and articulations.

30

A.

Solo

This system contains two staves. The top staff, labeled 'A.', shows a change in the harmonic structure. The bottom staff, labeled 'Solo', continues the melodic line, which includes a triplet of eighth notes and a change in the time signature to 3/4.

34

A.

Solo

This system contains two staves. The top staff, labeled 'A.', has a 4/4 time signature and contains mostly rests, with some chords appearing later in the system. The bottom staff, labeled 'Solo', begins with a 4/4 time signature and contains a melodic line with a triplet of eighth notes.

39

A.

Solo

This system contains two staves. The top staff, labeled 'A.', has a 4/4 time signature and contains mostly rests, with some chords appearing later in the system. The bottom staff, labeled 'Solo', begins with a 4/4 time signature and contains a melodic line with a triplet of eighth notes.

44

A.

Solo

This system contains two staves. The top staff, labeled 'A.', is in treble clef with a key signature of one sharp (F#) and a 7/8 time signature. It features a melodic line with eighth and sixteenth notes, including a triplet of eighth notes. The bottom staff, labeled 'Solo', is in treble clef and contains a complex accompaniment of chords and arpeggios, primarily using eighth and sixteenth notes.

48

A.

Solo

This system contains two staves. The top staff, labeled 'A.', continues the melodic line from the previous system, featuring a triplet of eighth notes. The bottom staff, labeled 'Solo', continues the accompaniment with similar rhythmic patterns and chordal structures.

51

A.

Solo

This system contains two staves. The top staff, labeled 'A.', continues the melodic line. The bottom staff, labeled 'Solo', continues the accompaniment, showing a mix of chords and moving lines.

55

A.

Solo

This system contains two staves. The top staff, labeled 'A.', continues the melodic line. The bottom staff, labeled 'Solo', continues the accompaniment with a consistent rhythmic and harmonic texture.

58

A.

Solo

This system contains two staves. The top staff, labeled 'A.', continues the melodic line. The bottom staff, labeled 'Solo', continues the accompaniment, featuring more complex chordal textures and arpeggios.

61

A.

Solo

This system contains two staves. The top staff, labeled 'A.', is in treble clef with a key signature of one sharp (F#) and a 4/4 time signature. It features a melodic line with eighth and sixteenth notes, including slurs and ties. The bottom staff, labeled 'Solo', is in treble clef and contains a more complex melodic line with many beamed sixteenth notes and slurs.

62

A.

Solo

This system contains two staves. The top staff, labeled 'A.', is in treble clef with a key signature of one sharp (F#) and a 4/4 time signature. It features a melodic line with eighth and sixteenth notes, including slurs and ties. The bottom staff, labeled 'Solo', is in treble clef and contains a more complex melodic line with many beamed sixteenth notes and slurs.

63

A.

Solo

This system contains two staves. The top staff, labeled 'A.', is in treble clef with a key signature of one sharp (F#) and a 4/4 time signature. It features a melodic line with eighth and sixteenth notes, including slurs and ties. The bottom staff, labeled 'Solo', is in treble clef and contains a more complex melodic line with many beamed sixteenth notes and slurs.

65

A.

Solo

This system contains two staves. The top staff, labeled 'A.', is in treble clef with a key signature of one sharp (F#) and a 4/4 time signature. It features a melodic line with eighth and sixteenth notes, including slurs and ties. The bottom staff, labeled 'Solo', is in treble clef and contains a more complex melodic line with many beamed sixteenth notes and slurs.

68

A.

Solo

This system contains two staves. The top staff, labeled 'A.', is in treble clef with a key signature of one sharp (F#) and a 4/4 time signature. It features a melodic line with eighth and sixteenth notes, including slurs and ties. The bottom staff, labeled 'Solo', is in treble clef and contains a more complex melodic line with many beamed sixteenth notes and slurs.

71

A.

Solo

This system contains two staves. The top staff, labeled 'A.', is in treble clef with a key signature of one sharp (F#) and a 7/8 time signature. It features a melodic line with eighth and sixteenth notes, including some beamed sixteenth notes and a final quarter note. The bottom staff, labeled 'Solo', is in treble clef and contains a complex accompaniment with many beamed sixteenth notes and some longer note values.

74

A.

Solo

This system contains two staves. The top staff, labeled 'A.', continues the melodic line from the previous system, showing some rests and then resuming with eighth notes. The bottom staff, labeled 'Solo', continues the accompaniment with similar rhythmic patterns.

77

A.

Solo

This system contains two staves. The top staff, labeled 'A.', shows a continuation of the melodic line with some rests. The bottom staff, labeled 'Solo', continues the accompaniment.

81

A.

Solo

This system contains two staves. The top staff, labeled 'A.', continues the melodic line. The bottom staff, labeled 'Solo', continues the accompaniment.

83

A.

Solo

This system contains two staves. The top staff, labeled 'A.', continues the melodic line. The bottom staff, labeled 'Solo', continues the accompaniment.



43



47



51



55



59



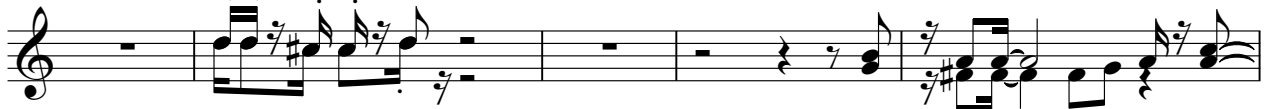
61



63



67



72



76







# Kusiaku\_Kossi\_Assaf-Manyron\_o

Solo

♩ = 100,000000

Musical staff 1, starting with a 4/4 time signature. The melody begins with a quarter rest, followed by a series of eighth and sixteenth notes, including some beamed eighth notes and sixteenth notes. The key signature has one sharp (F#).

Musical staff 2, starting with a 5-measure rest. The melody continues with eighth and sixteenth notes, including some beamed eighth notes and sixteenth notes. The key signature has one sharp (F#).

Musical staff 3, starting with a 10-measure rest. The melody continues with eighth and sixteenth notes, including some beamed eighth notes and sixteenth notes. The key signature has one sharp (F#).

Musical staff 4, starting with a 14-measure rest. The melody continues with eighth and sixteenth notes, including some beamed eighth notes and sixteenth notes. The key signature has one sharp (F#).

Musical staff 5, starting with an 18-measure rest. The melody continues with eighth and sixteenth notes, including some beamed eighth notes and sixteenth notes. The key signature has one sharp (F#).

Musical staff 6, starting with a 22-measure rest. The melody continues with eighth and sixteenth notes, including some beamed eighth notes and sixteenth notes. The key signature has one sharp (F#).

Musical staff 7, starting with a 26-measure rest. The melody continues with eighth and sixteenth notes, including some beamed eighth notes and sixteenth notes. The key signature has one sharp (F#).

Musical staff 8, starting with a 30-measure rest. The melody continues with eighth and sixteenth notes, including some beamed eighth notes and sixteenth notes. The key signature has one sharp (F#). The staff ends with a 3/4 time signature change.

Musical staff 9, starting with a 35-measure rest. The melody continues with eighth and sixteenth notes, including some beamed eighth notes and sixteenth notes. The key signature has one sharp (F#). The staff ends with a 4/4 time signature change.

Musical score for guitar solo, measures 40-69. The score is written in treble clef with a key signature of one sharp (F#). The time signature is 4/4. The piece begins at measure 40 with a melodic line in the upper register. Measure 45 introduces a more complex texture with multiple voices. Measure 49 features a change in texture with a prominent bass line. Measure 53 continues the melodic development. Measure 57 shows a shift in dynamics and texture. Measure 60 marks the beginning of a dense, rhythmic section with many sixteenth notes. Measure 61 continues this dense texture. Measure 63 shows a continuation of the rhythmic pattern. Measure 65 features a change in texture with a more melodic line. Measure 69 concludes the section with a melodic phrase.

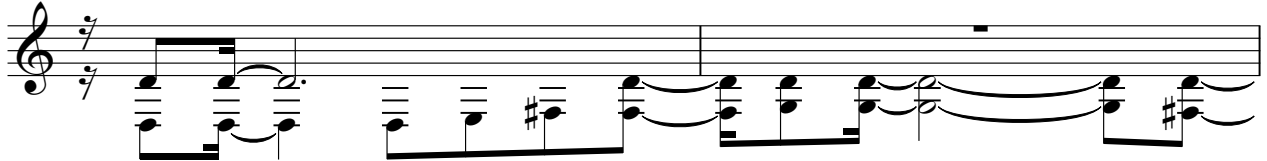
73



77



81



83

