

# Des\_Prez\_Josquin-Alma\_Redemptoris\_Mater

♩ = 240,000000

Bass Flute

Contrabass Flute

Musical score for Bass Flute and Contrabass Flute, measures 1-3. The key signature has one flat (B-flat) and the time signature is 4/2. The Bass Flute part starts with a whole note B-flat in the first measure, followed by a whole note D-flat in the second measure, and a half note G-flat in the third measure, which is tied to the next measure. The Contrabass Flute part has whole rests in the first two measures and a whole note B-flat in the third measure, which is tied to the next measure.

4

B. Fl.

B. Fl.

Cb. Fl.

Musical score for Bass Flute and Contrabass Flute, measures 4-6. The key signature has one flat (B-flat) and the time signature is 4/2. The first Bass Flute part starts with a whole note B-flat in the first measure, followed by a half note D-flat in the second measure, and a half note G-flat in the third measure, which is tied to the next measure. The second Bass Flute part has whole rests in the first two measures and a whole note B-flat in the third measure, which is tied to the next measure. The Contrabass Flute part has a whole note B-flat in the first measure, which is tied to the next measure, and a half note G-flat in the third measure, which is tied to the next measure.

7

B. Fl.

B. Fl.

B. Fl.

Cb. Fl.

Musical score for Bass Flute and Contrabass Flute, measures 7-9. The key signature has one flat (B-flat) and the time signature is 4/2. The first Bass Flute part starts with a whole rest in the first measure, followed by a half note D-flat in the second measure, and a half note G-flat in the third measure, which is tied to the next measure. The second Bass Flute part has whole rests in the first two measures and a whole note B-flat in the third measure, which is tied to the next measure. The third Bass Flute part has a whole note B-flat in the first measure, which is tied to the next measure, and a whole note D-flat in the third measure, which is tied to the next measure. The Contrabass Flute part has a half note G-flat in the first measure, which is tied to the next measure, and a half note B-flat in the third measure, which is tied to the next measure.

10

B. Fl.

B. Fl.

B. Fl.

Cb. Fl.

This system contains measures 10, 11, and 12. It features four staves: three for B. Fl. and one for Cb. Fl. The music is in a key with one flat and a 3/4 time signature. Measure 10 shows a melodic line in the top B. Fl. staff and a supporting line in the Cb. Fl. staff. Measure 11 continues the melodic development. Measure 12 concludes the system with sustained notes in the B. Fl. parts and a final note in the Cb. Fl. part.

13

B. Fl.

B. Fl.

B. Fl.

Cb. Fl.

This system contains measures 13, 14, and 15. The top B. Fl. staff has a melodic line with a fermata in measure 13. The middle B. Fl. staff has a sustained note in measure 13. The bottom B. Fl. staff has a melodic line. The Cb. Fl. staff has a melodic line. Measure 14 shows a rest in the top B. Fl. staff and a sustained note in the middle B. Fl. staff. Measure 15 concludes the system with a melodic line in the top B. Fl. staff and a sustained note in the middle B. Fl. staff.

16

B. Fl.

B. Fl.

B. Fl.

Cb. Fl.

This system contains measures 16, 17, and 18. The top B. Fl. staff has a melodic line. The middle B. Fl. staff has a sustained note in measure 16. The bottom B. Fl. staff has a sustained note in measure 16. The Cb. Fl. staff has a melodic line. Measure 17 shows a melodic line in the top B. Fl. staff and a sustained note in the middle B. Fl. staff. Measure 18 concludes the system with a melodic line in the top B. Fl. staff and a sustained note in the middle B. Fl. staff.

19

B. Fl.

B. Fl.

B. Fl.

Cb. Fl.

Detailed description: This system contains measures 19, 20, and 21. It features four staves: three for B. Fl. and one for Cb. Fl. The key signature has one flat. In measure 19, the B. Fl. parts play a sequence of eighth notes (F4, G4, A4, B4) and quarter notes (C5, B4, A4, G4). The Cb. Fl. part plays a dotted half note (F3) followed by quarter notes (G3, A3, B3). In measure 20, the B. Fl. parts continue with quarter notes (A4, G4, F4, E4) and a dotted quarter note (F4). The Cb. Fl. part plays quarter notes (G3, A3, B3, C4). In measure 21, the B. Fl. parts play a half note (F4) with a slur over the next two notes (G4, A4), followed by quarter notes (B4, A4, G4, F4). The Cb. Fl. part plays a dotted half note (F3) followed by quarter notes (G3, A3, B3).

22

B. Fl.

B. Fl.

B. Fl.

Cb. Fl.

Detailed description: This system contains measures 22, 23, and 24. In measure 22, the B. Fl. parts play quarter notes (F4, G4, A4, B4) and a dotted quarter note (C5). The Cb. Fl. part plays quarter notes (G3, A3, B3, C4). In measure 23, the B. Fl. parts play a dotted half note (F4) followed by quarter notes (G4, A4, B4). The Cb. Fl. part plays a dotted half note (F3) followed by quarter notes (G3, A3, B3). In measure 24, the B. Fl. parts play quarter notes (A4, G4, F4, E4) and a dotted quarter note (F4). The Cb. Fl. part plays quarter notes (G3, A3, B3, C4).

25

B. Fl.

B. Fl.

B. Fl.

Cb. Fl.

Detailed description: This system contains measures 25, 26, and 27. In measure 25, the B. Fl. parts play quarter notes (F4, G4, A4, B4) and a dotted quarter note (C5). The Cb. Fl. part plays a dotted half note (F3) followed by quarter notes (G3, A3, B3). In measure 26, the B. Fl. parts play quarter notes (A4, G4, F4, E4) and a dotted quarter note (F4). The Cb. Fl. part plays quarter notes (G3, A3, B3, C4). In measure 27, the B. Fl. parts play a half note (F4) with a slur over the next two notes (G4, A4), followed by quarter notes (B4, A4, G4, F4). The Cb. Fl. part plays a dotted half note (F3) followed by quarter notes (G3, A3, B3).

28

B. Fl.  
B. Fl.  
B. Fl.  
Cb. Fl.

This system contains measures 28, 29, and 30. The first three staves are for B. Fl. and the fourth is for Cb. Fl. Measure 28 shows various notes and rests. Measure 29 features a long slur over the first three staves. Measure 30 ends with a double bar line and repeat dots.

31

B. Fl.  
B. Fl.  
B. Fl.  
Cb. Fl.

This system contains measures 31, 32, and 33. The first three staves are for B. Fl. and the fourth is for Cb. Fl. Measure 31 has a long slur over the first three staves. Measure 32 continues with notes and rests. Measure 33 ends with a double bar line and repeat dots.

34

B. Fl.  
B. Fl.  
B. Fl.  
Cb. Fl.

This system contains measures 34, 35, and 36. The first three staves are for B. Fl. and the fourth is for Cb. Fl. Measure 34 shows notes and rests. Measure 35 features a long slur over the first three staves. Measure 36 ends with a double bar line and repeat dots.

37

B. Fl.  
B. Fl.  
B. Fl.  
Cb. Fl.

This system contains measures 37, 38, and 39. The first staff (B. Fl.) starts with a quarter note G4, followed by quarter notes A4 and B4, and a half note C5. The second staff (B. Fl.) has a half note G4, quarter notes A4 and B4, a half note C5, and quarter notes B4, A4, G4. The third staff (B. Fl.) has a whole rest in measure 37, a whole rest in measure 38, and a half note G4 in measure 39. The fourth staff (Cb. Fl.) has a whole rest in measure 37, a half note G3 in measure 38, and a half note G3 in measure 39.

40

B. Fl.  
B. Fl.  
B. Fl.  
Cb. Fl.

This system contains measures 40, 41, and 42. The first staff (B. Fl.) has a half note G4, a quarter note A4, and a quarter note B4. The second staff (B. Fl.) has a half note G4, quarter notes A4 and B4, a half note C5, and quarter notes B4, A4, G4. The third staff (B. Fl.) has a half note G4, quarter notes A4 and B4, a half note C5, and quarter notes B4, A4, G4. The fourth staff (Cb. Fl.) has a half note G3, a quarter note F3, and a quarter note E3.

43

B. Fl.  
B. Fl.  
B. Fl.  
Cb. Fl.

This system contains measures 43, 44, and 45. The first staff (B. Fl.) has a whole rest in measure 43, a half note G4 in measure 44, and quarter notes A4, B4, C5 in measure 45. The second staff (B. Fl.) has a half note G4, quarter notes A4 and B4, a half note C5, and quarter notes B4, A4, G4. The third staff (B. Fl.) has a half note G4, quarter notes A4 and B4, a half note C5, and quarter notes B4, A4, G4. The fourth staff (Cb. Fl.) has a whole rest in measure 43, a whole rest in measure 44, and a half note G3 in measure 45.

46

B. Fl.

B. Fl.

B. Fl.

Cb. Fl.

This system contains measures 46, 47, and 48. It features four staves: three for B. Fl. and one for Cb. Fl. The music is in a key with one flat and a 7/8 time signature. Measure 46 shows a melodic line in the top B. Fl. staff with a slur over the first two notes. Measure 47 has a whole rest in the top B. Fl. staff and a slur over the last two notes. Measure 48 features a quarter rest in the top B. Fl. staff and a slur over the last two notes. The Cb. Fl. part provides a harmonic accompaniment with slurs and ties.

49

B. Fl.

B. Fl.

B. Fl.

Cb. Fl.

This system contains measures 49, 50, and 51. It features four staves: three for B. Fl. and one for Cb. Fl. Measure 49 has a dotted quarter note in the top B. Fl. staff. Measure 50 has a slur over the last two notes in the top B. Fl. staff. Measure 51 has a slur over the last two notes in the top B. Fl. staff. The Cb. Fl. part continues with a steady accompaniment.

52

B. Fl.

B. Fl.

B. Fl.

Cb. Fl.

This system contains measures 52, 53, and 54. It features four staves: three for B. Fl. and one for Cb. Fl. Measure 52 has a slur over the last two notes in the top B. Fl. staff. Measure 53 has a slur over the last two notes in the top B. Fl. staff. Measure 54 has a slur over the last two notes in the top B. Fl. staff. The Cb. Fl. part has a slur over the last two notes in measure 54.

56

B. Fl.

B. Fl.

B. Fl.

Cb. Fl.

Detailed description: This system contains measures 56, 57, and 58. The B. Fl. parts (top three staves) are in treble clef with a key signature of one flat. In measure 56, the top staff has a whole rest, while the middle and bottom staves have quarter notes. In measure 57, the top staff has a whole rest, and the other staves have quarter notes. In measure 58, the top staff has a quarter note followed by a quarter rest, the middle staff has a half note, and the bottom staff has a quarter note. The Cb. Fl. part (bottom staff) has a quarter rest in measure 56, followed by quarter notes in measures 57 and 58.

59

B. Fl.

B. Fl.

B. Fl.

Cb. Fl.

Detailed description: This system contains measures 59, 60, and 61. The B. Fl. parts (top three staves) are in treble clef with a key signature of one flat. In measure 59, the top staff has quarter notes, the middle staff has a half note, and the bottom staff has quarter notes. In measure 60, the top staff has a half note, the middle staff has quarter notes, and the bottom staff has quarter notes. In measure 61, the top staff has a quarter note followed by a quarter rest, the middle staff has a half note, and the bottom staff has a whole rest. The Cb. Fl. part (bottom staff) has quarter notes in measures 59 and 60, followed by a whole rest in measure 61.

62

B. Fl.

B. Fl.

B. Fl.

Cb. Fl.

Detailed description: This system contains measures 62, 63, and 64. The B. Fl. parts (top three staves) are in treble clef with a key signature of one flat. In measure 62, the top staff has quarter notes, the middle staff has quarter notes, and the bottom staff has quarter notes. In measure 63, the top staff has quarter notes, the middle staff has a half note, and the bottom staff has quarter notes. In measure 64, the top staff has quarter notes, the middle staff has a whole rest, and the bottom staff has quarter notes. The Cb. Fl. part (bottom staff) has a quarter rest in measure 62, followed by quarter notes in measures 63 and 64.

65

B. Fl.

B. Fl.

B. Fl.

Cb. Fl.

Detailed description: This system contains measures 65, 66, and 67. The first flute (B. Fl.) has a melodic line starting with a half note G4, followed by a quarter rest, and then a half note A4. The second flute (B. Fl.) has a quarter rest, followed by quarter notes G4, A4, B4, and C5. The third flute (B. Fl.) has a half note G4, followed by a quarter rest, and then a half note A4. The contrabass flute (Cb. Fl.) has a half note G4, followed by a quarter rest, and then a half note A4. There are dynamic markings (ff) at the end of measures 66 and 67.

68

B. Fl.

B. Fl.

B. Fl.

Cb. Fl.

Detailed description: This system contains measures 68, 69, and 70. The first flute (B. Fl.) has a melodic line starting with a half note G4, followed by quarter notes A4, B4, C5, D5, E5, F5, G5, and A5. The second flute (B. Fl.) has a quarter rest, followed by quarter notes G4, A4, B4, and C5. The third flute (B. Fl.) has a quarter note G4, followed by quarter notes A4, B4, and C5. The contrabass flute (Cb. Fl.) has a quarter rest, followed by quarter notes G4, A4, and B4. There are dynamic markings (ff) at the end of measures 69 and 70.

71

B. Fl.

B. Fl.

B. Fl.

Cb. Fl.

Detailed description: This system contains measures 71, 72, and 73. The first flute (B. Fl.) has a half note G4, followed by a quarter rest, and then a half note A4. The second flute (B. Fl.) has a quarter rest, followed by a quarter note G4, and then a half note A4. The third flute (B. Fl.) has a quarter rest, followed by quarter notes G4, A4, B4, and C5. The contrabass flute (Cb. Fl.) has a half note G4, followed by quarter notes A4, B4, and C5. There are dynamic markings (ff) at the end of measures 72 and 73.



74

B. Fl.  
B. Fl.  
B. Fl.  
Cb. Fl.

This system contains measures 74, 75, and 76. The first staff (B. Fl.) has a melodic line with a slur over measures 74-75 and a fermata in measure 76. The second staff (B. Fl.) has a similar melodic line with a slur over measures 74-75 and a fermata in measure 76. The third staff (B. Fl.) has a bass line with a slur over measures 74-75 and a fermata in measure 76. The fourth staff (Cb. Fl.) has a melodic line with a slur over measures 74-75 and a fermata in measure 76.

77

B. Fl.  
B. Fl.  
B. Fl.  
Cb. Fl.

This system contains measures 77, 78, and 79. The first staff (B. Fl.) has a melodic line with a slur over measures 77-78 and a fermata in measure 79. The second staff (B. Fl.) has a bass line with a slur over measures 77-78 and a fermata in measure 79. The third staff (B. Fl.) has a melodic line with a slur over measures 77-78 and a fermata in measure 79. The fourth staff (Cb. Fl.) has a melodic line with a slur over measures 77-78 and a fermata in measure 79.

80

B. Fl.  
B. Fl.  
B. Fl.  
Cb. Fl.

This system contains measures 80, 81, and 82. The first staff (B. Fl.) has a melodic line with a slur over measures 80-81 and a fermata in measure 82. The second staff (B. Fl.) has a bass line with a slur over measures 80-81 and a fermata in measure 82. The third staff (B. Fl.) has a melodic line with a slur over measures 80-81 and a fermata in measure 82. The fourth staff (Cb. Fl.) has a melodic line with a slur over measures 80-81 and a fermata in measure 82.

83

B. Fl.  
B. Fl.  
B. Fl.  
Cb. Fl.

This system contains measures 83, 84, and 85. The first three staves are for B. Fl. and the fourth is for Cb. Fl. The music is in a key with one flat and a 3/4 time signature. Measure 83 shows a melodic line in the top B. Fl. and a bass line in the Cb. Fl. Measure 84 features a sustained note in the top B. Fl. and a rest in the Cb. Fl. Measure 85 continues the melodic and bass lines.

86

B. Fl.  
B. Fl.  
B. Fl.  
Cb. Fl.

This system contains measures 86, 87, and 88. The first three staves are for B. Fl. and the fourth is for Cb. Fl. Measure 86 has a rest in the top B. Fl. and a melodic line in the Cb. Fl. Measure 87 shows a melodic line in the top B. Fl. and a rest in the Cb. Fl. Measure 88 continues the melodic and bass lines.

89

B. Fl.  
B. Fl.  
B. Fl.  
Cb. Fl.

This system contains measures 89, 90, and 91. The first three staves are for B. Fl. and the fourth is for Cb. Fl. Measure 89 shows a melodic line in the top B. Fl. and a bass line in the Cb. Fl. Measure 90 features a sustained note in the top B. Fl. and a rest in the Cb. Fl. Measure 91 continues the melodic and bass lines.

92

B. Fl.

B. Fl.

B. Fl.

Cb. Fl.

Detailed description: This system contains measures 92, 93, and 94. The first flute (B. Fl.) has a melodic line with eighth and quarter notes. The second and third flutes (B. Fl.) play sustained notes with some grace notes. The contrabass flute (Cb. Fl.) provides a bass line with quarter and half notes.

95

B. Fl.

B. Fl.

B. Fl.

Cb. Fl.

Detailed description: This system contains measures 95, 96, and 97. The first flute (B. Fl.) has a melodic line with quarter and eighth notes. The second and third flutes (B. Fl.) play sustained notes. The contrabass flute (Cb. Fl.) provides a bass line with quarter and half notes.

98

B. Fl.

B. Fl.

B. Fl.

Cb. Fl.

Detailed description: This system contains measures 98, 99, and 100. The first flute (B. Fl.) has a melodic line with quarter and eighth notes. The second and third flutes (B. Fl.) play sustained notes. The contrabass flute (Cb. Fl.) provides a bass line with quarter and half notes.

101

B. Fl.  
B. Fl.  
B. Fl.  
Cb. Fl.

This system contains measures 101, 102, and 103. The first staff (B. Fl.) starts with a half note G4, followed by quarter notes A4, B4, and C5 in measure 101. In measure 102, it has a half note D5. In measure 103, it has a half note E5, followed by a quarter note D5, a quarter rest, and a quarter note C5. The second staff (B. Fl.) has a half note G4 in measure 101, a half note A4 in measure 102, and a half note B4 in measure 103. The third staff (B. Fl.) has a whole rest in measure 101, a whole rest in measure 102, and a half note G4 in measure 103. The fourth staff (Cb. Fl.) has a half note G3 in measure 101, a half note A3 in measure 102, and a half note B3 in measure 103.

104

B. Fl.  
B. Fl.  
B. Fl.  
Cb. Fl.

This system contains measures 104, 105, and 106. The first staff (B. Fl.) has a half note G4 in measure 104, a half note A4 in measure 105, and a half note B4 in measure 106. The second staff (B. Fl.) has a half note G4 in measure 104, a half note A4 in measure 105, and a half note B4 in measure 106. The third staff (B. Fl.) has a half note G4 in measure 104, a half note A4 in measure 105, and a half note B4 in measure 106. The fourth staff (Cb. Fl.) has a half note G3 in measure 104, a half note A3 in measure 105, and a half note B3 in measure 106.

107

B. Fl.  
B. Fl.  
B. Fl.  
Cb. Fl.

This system contains measures 107, 108, and 109. The first staff (B. Fl.) has a half note G4 in measure 107, a half note A4 in measure 108, and a half note B4 in measure 109. The second staff (B. Fl.) has a half note G4 in measure 107, a half note A4 in measure 108, and a half note B4 in measure 109. The third staff (B. Fl.) has a half note G4 in measure 107, a half note A4 in measure 108, and a half note B4 in measure 109. The fourth staff (Cb. Fl.) has a half note G3 in measure 107, a half note A3 in measure 108, and a half note B3 in measure 109.

110

B. Fl.  
B. Fl.  
B. Fl.  
Cb. Fl.

This system contains measures 110, 111, and 112. It features four staves: three for B. Fl. and one for Cb. Fl. The music is in a key with one flat (B-flat major or D minor) and 3/4 time. Measure 110 shows the B. Fl. staves with quarter and eighth notes, while the Cb. Fl. staff has whole notes. Measure 111 continues with similar rhythmic patterns. Measure 112 concludes with sustained notes and rests.

113

B. Fl.  
B. Fl.  
B. Fl.  
Cb. Fl.

This system contains measures 113, 114, and 115. The instrumentation remains the same. Measure 113 features a melodic line in the top B. Fl. staff with a slur over two notes. Measure 114 shows a more active role for the Cb. Fl. staff with eighth notes. Measure 115 ends with sustained notes in the B. Fl. staves and rests in the Cb. Fl. staff.

116

B. Fl.  
B. Fl.  
B. Fl.  
Cb. Fl.

This system contains measures 116, 117, and 118. The music is characterized by long, sweeping slurs across all staves, indicating sustained notes. Measure 116 has a large slur covering the first two staves. Measure 117 has a slur covering the bottom two staves. Measure 118 shows the continuation of these sustained notes, with some staves ending in rests.





83



87



91



95



99



103



107



111



114





# Des\_Prez\_Josquin-Alma\_Redemptoris\_Mater

Bass Flute

♩ = 240,000000

4

8

12

18

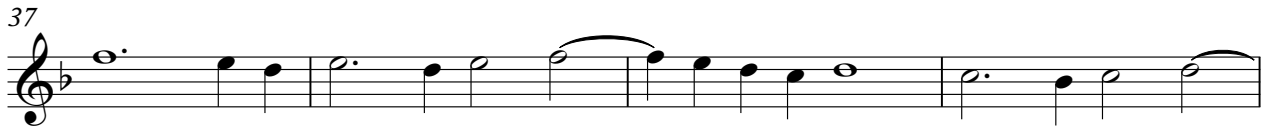
23

27

31

34

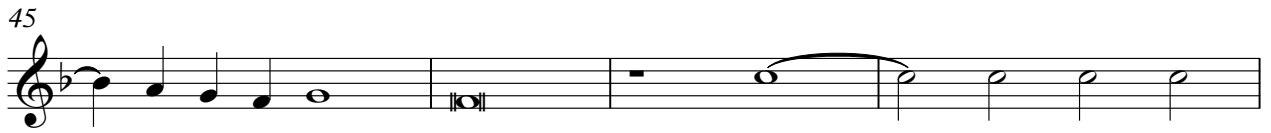
37



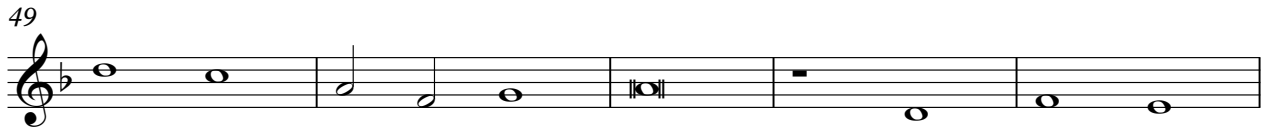
41



45



49



54



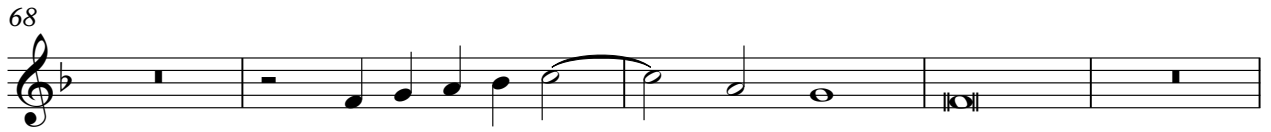
59



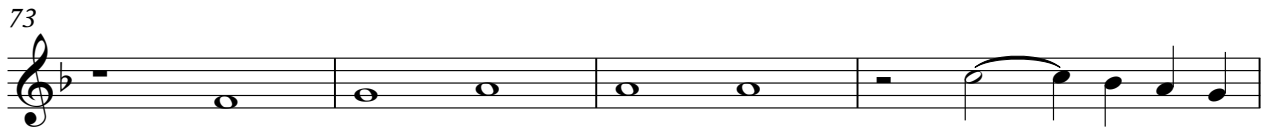
63



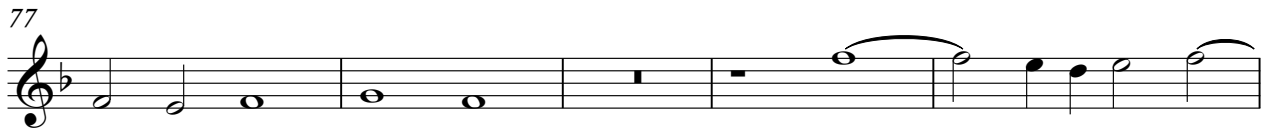
68



73



77



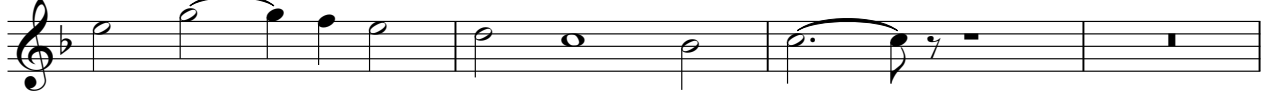
82



86



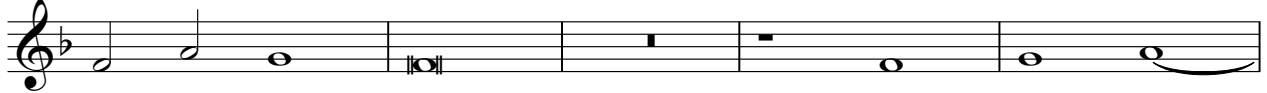
90



94



97



102



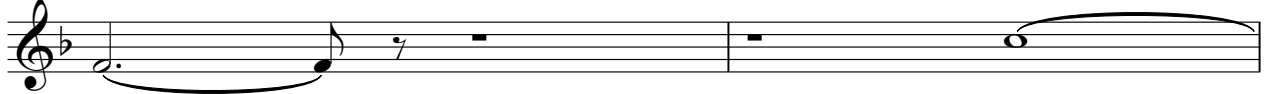
106



110



114



116



# Des\_Prez\_Josquin-Alma\_Redemptoris\_Mater

Bass Flute

♩ = 240,000000

6

10

14

20

25

29

33

36

Bass Flute

39



43



47



51



58



62



66



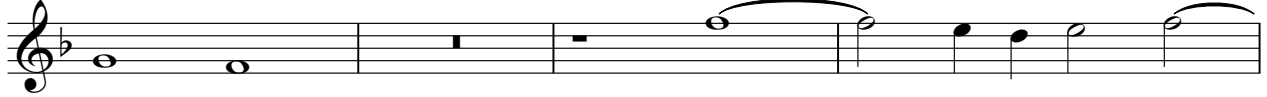
71



76



80



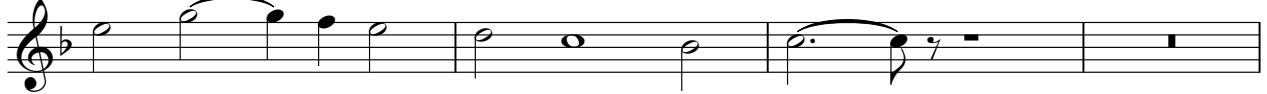
84



88



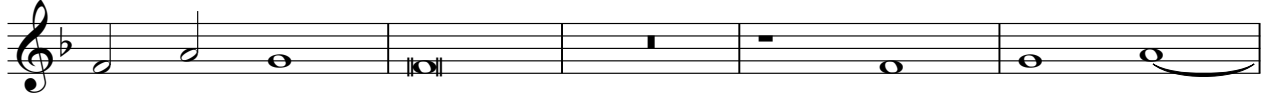
92



96



99



104



108



112



115



# Des\_Prez\_Josquin-Alma\_Redemptoris\_Mater

Contrabass Flute

♩ = 240,000000

2

6

10

14

18

22

26

2

32

37

40

3

Detailed description: The musical score is written for Contrabass Flute in 4/2 time. It begins with a tempo marking of a quarter note equal to 240,000,000. The first staff starts with a measure containing a whole rest, followed by a measure with a fermata over a whole note. The second staff contains a series of eighth notes and quarter notes, some with slurs. The third staff features a quarter note followed by a quarter rest, then a quarter note with a fermata, and a quarter rest. The fourth staff continues with eighth notes and quarter notes. The fifth staff has a quarter note, a quarter rest, a quarter note, a quarter rest, a quarter note, and a quarter rest. The sixth staff begins with a quarter note, a quarter rest, a quarter note, a quarter rest, a quarter note, and a quarter rest. The seventh staff starts with a quarter note, a quarter rest, a quarter note, a quarter rest, a quarter note, and a quarter rest. The eighth staff contains a quarter note, a quarter rest, a quarter note, a quarter rest, a quarter note, and a quarter rest. The ninth staff begins with a quarter note, a quarter rest, a quarter note, a quarter rest, a quarter note, and a quarter rest. The tenth staff starts with a quarter note, a quarter rest, a quarter note, a quarter rest, a quarter note, and a quarter rest.

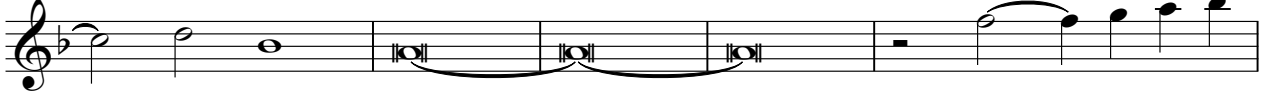
44



48



52



57



62



66



72



76



80



83





87



91



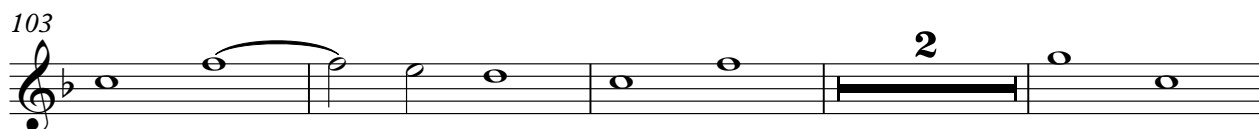
95



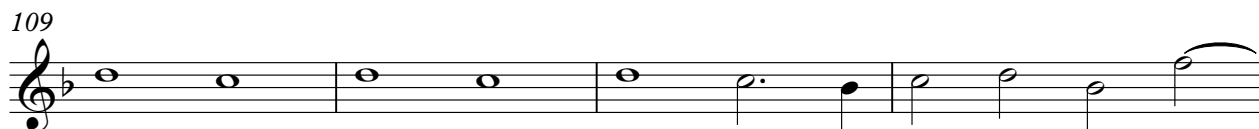
99



103



109



113



116

