

control track

♩ = 100,000000

up

down

The first system consists of two staves. The top staff, labeled 'up', contains a melody in 4/4 time with a key signature of two flats. It begins with a half note G4, followed by eighth notes A4, B4, C5, and D5. The second measure contains eighth notes D5, C5, B4, and A4, with a sharp sign above the second measure. The third measure has a quarter rest, followed by eighth notes G4, F4, E4, and D4. The fourth measure contains eighth notes C4, B3, A3, and G3. The bottom staff, labeled 'down', contains a continuous eighth-note accompaniment: G4, A4, B4, C5, D5, C5, B4, A4, G4, F4, E4, D4, C4, B3, A3, G3.

5

up

down

The second system starts at measure 5. The top staff, labeled 'up', continues the melody with a half note G4, eighth notes A4, B4, C5, and D5, followed by a half note G4. The second measure contains eighth notes A4, B4, C5, and D5. The third measure contains eighth notes D5, C5, B4, and A4. The fourth measure contains eighth notes G4, F4, E4, and D4. The fifth measure contains eighth notes C4, B3, A3, and G3. The sixth measure contains eighth notes F3, E3, D3, and C3. The seventh measure contains eighth notes B2, A2, G2, and F2. The eighth measure contains eighth notes E2, D2, C2, and B1. The bottom staff, labeled 'down', contains a continuous eighth-note accompaniment: G4, A4, B4, C5, D5, C5, B4, A4, G4, F4, E4, D4, C4, B3, A3, G3.

9

up

down

The third system starts at measure 9. The top staff, labeled 'up', contains a half note G4, eighth notes A4, B4, C5, and D5, followed by a half note G4. The second measure contains eighth notes A4, B4, C5, and D5. The third measure contains eighth notes D5, C5, B4, and A4. The fourth measure contains eighth notes G4, F4, E4, and D4. The fifth measure contains eighth notes C4, B3, A3, and G3. The sixth measure contains eighth notes F3, E3, D3, and C3. The seventh measure contains eighth notes B2, A2, G2, and F2. The eighth measure contains eighth notes E2, D2, C2, and B1. The bottom staff, labeled 'down', contains a continuous eighth-note accompaniment: G4, A4, B4, C5, D5, C5, B4, A4, G4, F4, E4, D4, C4, B3, A3, G3.

12

up

down

The fourth system starts at measure 12. The top staff, labeled 'up', contains a half note G4, eighth notes A4, B4, C5, and D5, followed by a half note G4. The second measure contains eighth notes A4, B4, C5, and D5. The third measure contains eighth notes D5, C5, B4, and A4. The fourth measure contains eighth notes G4, F4, E4, and D4. The fifth measure contains eighth notes C4, B3, A3, and G3. The sixth measure contains eighth notes F3, E3, D3, and C3. The seventh measure contains eighth notes B2, A2, G2, and F2. The eighth measure contains eighth notes E2, D2, C2, and B1. The bottom staff, labeled 'down', contains a continuous eighth-note accompaniment: G4, A4, B4, C5, D5, C5, B4, A4, G4, F4, E4, D4, C4, B3, A3, G3.

14

up

down

The fifth system starts at measure 14. The top staff, labeled 'up', contains a half note G4, eighth notes A4, B4, C5, and D5, followed by a half note G4. The second measure contains eighth notes A4, B4, C5, and D5. The third measure contains eighth notes D5, C5, B4, and A4. The fourth measure contains eighth notes G4, F4, E4, and D4. The fifth measure contains eighth notes C4, B3, A3, and G3. The sixth measure contains eighth notes F3, E3, D3, and C3. The seventh measure contains eighth notes B2, A2, G2, and F2. The eighth measure contains eighth notes E2, D2, C2, and B1. The bottom staff, labeled 'down', contains a continuous eighth-note accompaniment: G4, A4, B4, C5, D5, C5, B4, A4, G4, F4, E4, D4, C4, B3, A3, G3.

17

up



down



Detailed description: This system covers measures 17, 18, and 19. The 'up' staff (treble clef) features a sequence of eighth notes in the first measure, followed by chords in the second and third measures. The 'down' staff (treble clef) features chords in the first measure, followed by eighth notes in the second and third measures.

20

up




down




Detailed description: This system covers measures 20, 21, and 22. The 'up' staff (treble clef) features eighth notes in the first measure, eighth notes with slurs in the second measure, and eighth notes with slurs in the third measure. The 'down' staff (treble clef) features rests in the first and second measures, followed by eighth notes in the third measure.

23

up




down




Detailed description: This system covers measures 23, 24, 25, and 26. The 'up' staff (treble clef) features chords in the first measure, chords in the second measure, chords in the third measure, and chords in the fourth measure. The 'down' staff (treble clef) features eighth notes in the first measure, eighth notes in the second measure, eighth notes in the third measure, and eighth notes in the fourth measure.

27

up



down



Detailed description: This system covers measures 27, 28, 29, and 30. The 'up' staff (treble clef) features chords in the first measure, chords in the second measure, chords in the third measure, and chords in the fourth measure. The 'down' staff (treble clef) features eighth notes in the first measure, eighth notes in the second measure, eighth notes in the third measure, and eighth notes in the fourth measure.

31

up




down



Detailed description: This system covers measures 31, 32, 33, and 34. The 'up' staff (treble clef) features eighth notes in the first measure, eighth notes in the second measure, eighth notes in the third measure, and eighth notes in the fourth measure. The 'down' staff (treble clef) features chords in the first measure, eighth notes in the second measure, eighth notes in the third measure, and eighth notes in the fourth measure.

35

up



down



Detailed description: This system covers measures 35, 36, 37, and 38. The 'up' staff (treble clef) features eighth notes in the first measure, eighth notes in the second measure, eighth notes in the third measure, and chords in the fourth measure. The 'down' staff (treble clef) features eighth notes in the first measure, eighth notes in the second measure, eighth notes in the third measure, and eighth notes in the fourth measure.

39

up



down



43

up




down




46

up



down



49

up



down



52

up



down



56

up



down



60

up

down

Detailed description: This system covers measures 60 to 63. The 'up' part (treble clef) starts with a quarter rest, followed by quarter notes G4, A4, B4, and C5. It then features eighth-note runs: G4-A4-B4-C5, A4-B4-C5, and G4-A4-B4-C5. The 'down' part (treble clef) consists of a steady eighth-note bass line: G3, A3, B3, C4, D4, E4, F4, G4, A4, B4, C5, D5, E5, F5, G5, A5, B5, C6.

64

up

down

Detailed description: This system covers measures 64 to 66. The 'up' part (treble clef) begins with a quarter rest, followed by quarter notes G4, A4, B4, and C5. It then features eighth-note runs: G4-A4-B4-C5, A4-B4-C5, and G4-A4-B4-C5. The 'down' part (treble clef) consists of a steady eighth-note bass line: G3, A3, B3, C4, D4, E4, F4, G4, A4, B4, C5, D5, E5, F5, G5, A5, B5, C6.

67

up

down

Detailed description: This system covers measures 67 to 70. The 'up' part (treble clef) features eighth-note runs: G4-A4-B4-C5, A4-B4-C5, G4-A4-B4-C5, and A4-B4-C5. The 'down' part (treble clef) consists of a steady eighth-note bass line: G3, A3, B3, C4, D4, E4, F4, G4, A4, B4, C5, D5, E5, F5, G5, A5, B5, C6.

70

up

down

Detailed description: This system covers measures 70 to 73. The 'up' part (treble clef) features quarter notes: G4, A4, B4, C5, G4, A4, B4, C5, G4, A4, B4, C5, G4, A4, B4, C5. The 'down' part (treble clef) consists of a steady eighth-note bass line: G3, A3, B3, C4, D4, E4, F4, G4, A4, B4, C5, D5, E5, F5, G5, A5, B5, C6.

74

up

down

Detailed description: This system covers measures 74 to 77. The 'up' part (treble clef) features quarter notes: G4, A4, B4, C5, G4, A4, B4, C5, G4, A4, B4, C5, G4, A4, B4, C5. The 'down' part (treble clef) consists of a steady eighth-note bass line: G3, A3, B3, C4, D4, E4, F4, G4, A4, B4, C5, D5, E5, F5, G5, A5, B5, C6.

control track

up

♩ = 100,000000



V.S.



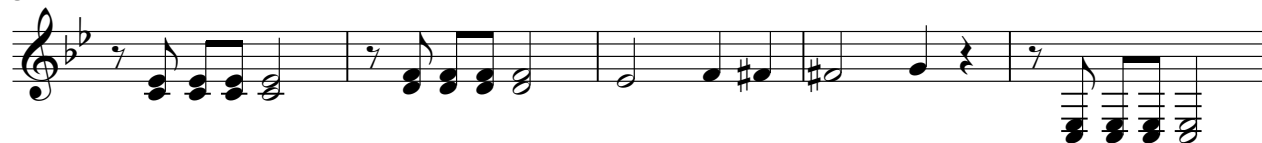
control track

down

♩ = 100,000000



5



10



16



21



26



31



35



40



45



V.S.

2

down

49



53



59



63



69



73

