

Packard_Dylan-Domus_Divisa_Contra_Se

♩ = 60,000000

Soprano
Alto
Quintus
Baritone

Detailed description: This block contains the first five measures of a musical score for four voices. The tempo is marked as ♩ = 60,000000. The key signature has three flats (B-flat, E-flat, A-flat) and the time signature is 4/4. The Soprano part consists of half notes: G4, A4, Bb4, C5, Bb4, A4, G4. The Alto part starts with a quarter rest, followed by quarter notes: G4, A4, Bb4, C5, Bb4, A4, G4, and eighth notes: F4, E4, D4, C4. The Quintus part starts with a quarter rest, followed by quarter notes: G4, A4, Bb4, C5, Bb4, A4, G4. The Baritone part consists of half notes: G3, F3, E3, D3, C3, B2, A2.

6

S.
A.
Q.
Bar.

Detailed description: This block contains measures 6 through 10 of the musical score. The Soprano part continues with half notes: G4, A4, Bb4, C5, Bb4, A4, G4, and eighth notes: F4, E4, D4, C4. The Alto part continues with eighth notes: F4, E4, D4, C4, B3, A3, G3, F3, E3, D3, C3, B2, A2, G2, F2, E2, D2, C2, B1, A1, G1, F1, E1, D1, C1, B0, A0, G0, F0, E0, D0, C0, B-1, A-1, G-1, F-1, E-1, D-1, C-1, B-2, A-2, G-2, F-2, E-2, D-2, C-2, B-3, A-3, G-3, F-3, E-3, D-3, C-3, B-4, A-4, G-4. The Quintus part continues with quarter notes: G4, A4, Bb4, C5, Bb4, A4, G4. The Baritone part continues with quarter notes: G3, F3, E3, D3, C3, B2, A2, G2, F2, E2, D2, C2, B1, A1, G1, F1, E1, D1, C1, B0, A0, G0, F0, E0, D0, C0, B-1, A-1, G-1, F-1, E-1, D-1, C-1, B-2, A-2, G-2, F-2, E-2, D-2, C-2, B-3, A-3, G-3, F-3, E-3, D-3, C-3, B-4, A-4, G-4.

2

10

S.

A.

Q.

Bar.

This musical system covers measures 10 through 13. It features four staves: Soprano (S.), Alto (A.), Tenor (Q.), and Bass (Bar.). The key signature is three flats (B-flat, E-flat, A-flat) and the time signature is 8/8. The Soprano part consists of half notes: B-flat, D-flat, F, A-flat, B-flat, D-flat, F, A-flat. The Alto part starts with a whole rest, followed by quarter notes: B-flat, D-flat, F, A-flat, B-flat, D-flat, F, A-flat. The Tenor part begins with an eighth-note triplet (B-flat, D-flat, F), followed by quarter notes: A-flat, B-flat, D-flat, F, A-flat, B-flat, D-flat, F. The Bass part features a steady eighth-note pattern: B-flat, D-flat, F, A-flat, B-flat, D-flat, F, A-flat.

14

S.

A.

Q.

Bar.

This musical system covers measures 14 through 17. It features four staves: Soprano (S.), Alto (A.), Tenor (Q.), and Bass (Bar.). The key signature is three flats (B-flat, E-flat, A-flat) and the time signature is 8/8. The Soprano part consists of half notes: B-flat, D-flat, F, A-flat, B-flat, D-flat, F, A-flat. The Alto part starts with a quarter note B-flat, followed by quarter notes: D-flat, F, A-flat, B-flat, D-flat, F, A-flat. The Tenor part begins with a quarter note B-flat, followed by quarter notes: D-flat, F, A-flat, B-flat, D-flat, F, A-flat, and ends with an eighth-note triplet (B-flat, D-flat, F). The Bass part features a steady eighth-note pattern: B-flat, D-flat, F, A-flat, B-flat, D-flat, F, A-flat.

19

S.

A.

Q.

Bar.

24

S.

A.

Q.

Bar.

29

S.

A.

Q.

Bar.

33

S.

A.

Q.

Bar.

36

S.



A.



Q.



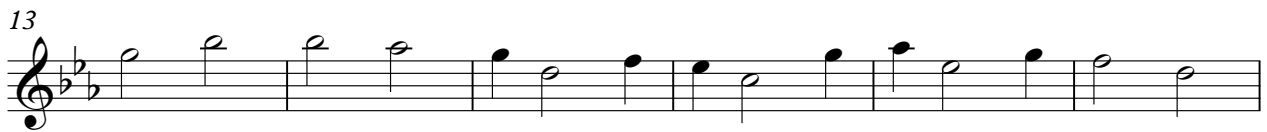
Bar.



The image shows a page of musical notation for a four-part vocal ensemble. The score is written in G major (one sharp) and 4/4 time. It consists of four staves: Soprano (S.), Alto (A.), Tenor (Q.), and Bass (Bar.). The Soprano part features a simple melody of half notes. The Alto part has a similar melody but with some eighth-note patterns. The Tenor part is more active, featuring eighth-note runs and sixteenth-note patterns. The Bass part provides a steady accompaniment with half notes. The page is numbered 36 at the top left and 5 at the top right.

Soprano Packard_Dylan-Domus_Divisa_Contra_Se

♩ = 60,000000



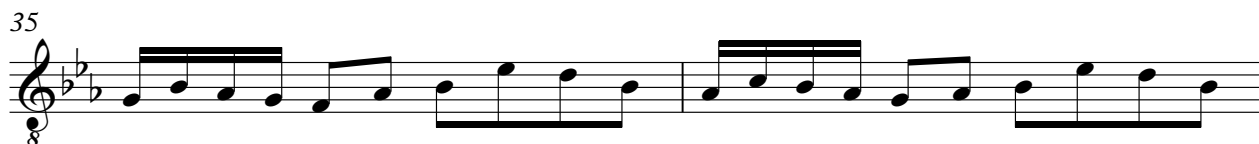
Alto Packard_Dylan-Domus_Divisa_Contra_Se

♩ = 60,000000



Quintus Packard_Dylan-Domus_Divisa_Contra_Se

♩ = 60,000000



Baritone Packard_Dylan-Domus_Divisa_Contra_Se

♩ = 60,000000



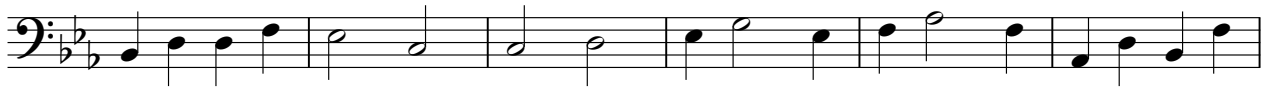
8



13



18



24



30



35

