

Packard_Dylan-Gavotte

♩ = 80,000000

Clarinet in B♭

Clarinet in B♭

Soprano Saxophone

5

Cl.

Cl.

Sop. Sax.

9

Cl.

Cl.

Sop. Sax.

13

Cl.

Cl.

Sop. Sax.

17

Cl.
Cl.
Sop. Sax.

This system contains measures 17 through 20. The first clarinet part (Cl.) features a complex melodic line with many sixteenth notes and slurs. The second clarinet part (Cl.) plays a more rhythmic accompaniment with eighth notes. The soprano saxophone part (Sop. Sax.) provides a harmonic foundation with dotted quarter notes and eighth notes.

21

Cl.
Cl.
Sop. Sax.

This system contains measures 21 through 23. The first clarinet part (Cl.) has a sparse melodic line with dotted quarter notes. The second clarinet part (Cl.) continues with eighth-note accompaniment. The soprano saxophone part (Sop. Sax.) maintains the harmonic accompaniment with eighth notes.

24

Cl.
Cl.
Sop. Sax.

This system contains measures 24 through 26. The first clarinet part (Cl.) has a melodic line with eighth notes and slurs. The second clarinet part (Cl.) plays a rhythmic accompaniment with eighth notes. The soprano saxophone part (Sop. Sax.) provides harmonic accompaniment with eighth notes.

27

Cl.
Cl.
Sop. Sax.

This system contains measures 27 through 30. The first clarinet part (Cl.) has a melodic line with eighth notes and slurs. The second clarinet part (Cl.) plays a rhythmic accompaniment with eighth notes. The soprano saxophone part (Sop. Sax.) provides harmonic accompaniment with eighth notes.

31

Cl.

Cl.

Sop. Sax.

37

Cl.

Cl.

Sop. Sax.

41

Cl.

Cl.

Sop. Sax.

46

Cl.

Cl.

Sop. Sax.

51

Cl.
Cl.
Sop. Sax.

This system contains measures 51, 52, and 53. The first clarinet part (Cl.) has a melodic line with eighth and sixteenth notes. The second clarinet part (Cl.) has a more rhythmic line with dotted notes. The soprano saxophone part (Sop. Sax.) has a steady eighth-note accompaniment.

54

Cl.
Cl.
Sop. Sax.

This system contains measures 54, 55, and 56. The first clarinet part (Cl.) continues its melodic line. The second clarinet part (Cl.) has a rhythmic pattern with eighth notes. The soprano saxophone part (Sop. Sax.) has a steady eighth-note accompaniment.

57

Cl.
Cl.
Sop. Sax.

This system contains measures 57, 58, and 59. The first clarinet part (Cl.) has a melodic line with eighth notes. The second clarinet part (Cl.) has a rhythmic pattern with eighth notes. The soprano saxophone part (Sop. Sax.) has a steady eighth-note accompaniment.


60

Cl.
Cl.
Sop. Sax.


This system contains measures 60, 61, and 62. The first clarinet part (Cl.) has a melodic line with eighth notes. The second clarinet part (Cl.) has a rhythmic pattern with eighth notes. The soprano saxophone part (Sop. Sax.) has a steady eighth-note accompaniment.

62


Cl.



Cl.



Sop. Sax.



Detailed description: This page contains three staves of musical notation. The top staff is for Clarinet 1 (Cl.), the middle for Clarinet 2 (Cl.), and the bottom for Soprano Saxophone (Sop. Sax.). All staves are in treble clef. The music is divided into three measures by vertical bar lines. The first measure contains a melodic line with eighth and sixteenth notes. The second measure continues the melodic line. The third measure concludes with a half note. The notation includes various accidentals (flats) and dynamic markings.

Packard_Dylan-Gavotte

Clarinet in B \flat

$\text{♩} = 80,000000$



V.S.

2

Clarinet in B \flat

57



61



Packard_Dylan-Gavotte

Clarinet in B \flat

$\text{♩} = 80,000000$



7



13



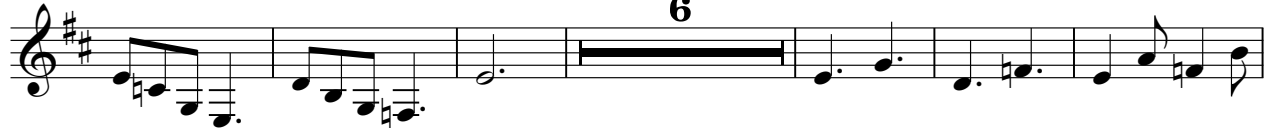
19



24



29



41



47



54



59



V.S.

2

Clarinet in B \flat

61



Packard_Dylan-Gavotte

Soprano Saxophone

♩ = 80,000000

8

14

20

25

30 **3**

39

45

51

56

Soprano Saxophone

61

