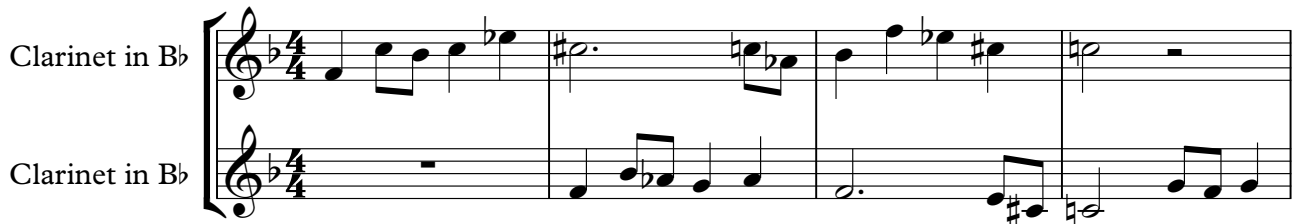


Packard_Dylan-Concert_for_B-flat_Clarinet

♩ = 112,000061

Clarinet in B♭



Clarinet in B♭

5

Cl.



Cl.

9

Cl.



Cl.

13

Cl.



Cl.

17

Cl.



Cl.

2

21

Cl.
Cl.

28

Cl.
Cl.

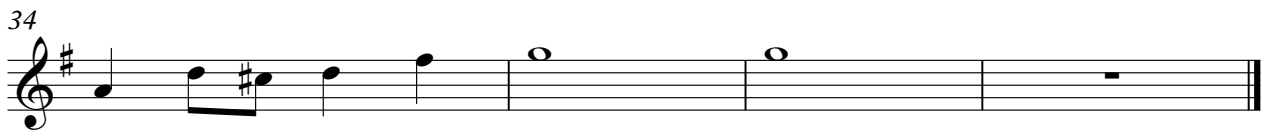
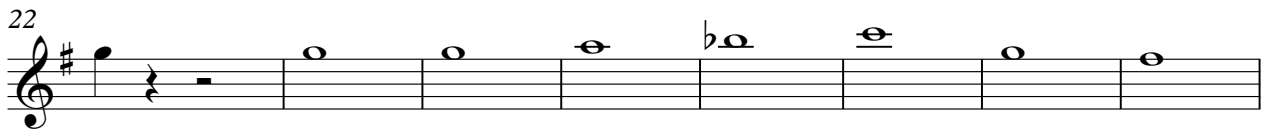
33

Cl.
Cl.

Packard_Dylan-Concert_for_B-flat_Clarinet

Clarinet in B \flat

$\text{♩} = 112,000061$



Packard_Dylan-Concert_for_B-flat_Clarinet

Clarinet in B \flat

$\text{♩} = 112,000061$

